

# Applying UV Hyperspectral Imaging for the Quantification of Honeydew Content on Raw Cotton via PCA and PLS-R Models

Mona Knoblich <sup>1,2,†</sup>, Mohammad Al Ktash <sup>1,2,†</sup>, Frank Wackenhut <sup>1</sup>, Volker Jehle <sup>3</sup>, Edwin Ostertag <sup>1</sup>  
and Marc Brecht <sup>1,2,\*</sup>

<sup>1</sup> Process Analysis and Technology PA & T, Reutlingen University, Alteburgstraße 150, 72762 Reutlingen, Germany; mona.knoblich@reutlingen-university.de (M.K.); mohammad.alktash@reutlingen-university.de (M.A.K.); frank.wackenhut@reutlingen-university.de (F.W.); edwin.ostertag@reutlingen-university.de (E.O.)

<sup>2</sup> Institute of Physical and Theoretical Chemistry, Eberhard Karls University Tübingen, Auf der Morgenstelle 18, 72076 Tübingen, Germany

<sup>3</sup> Texoversum Faculty Textile, Reutlingen University, Alteburgstraße 150, 72762 Reutlingen, Germany; volker.jehle@reutlingen-university.de

\* Correspondence: marc.brecht@reutlingen-university.de

† These authors contributed equally to this work.

## Supplementary Materials:

For model building and understanding the PLS-R factor loadings and loading weights for all three factors are displayed in the Figure S1. X-loadings reflect the relationship between the predictor variables and the latent variables, while X-loadings weights represent the relationship between the predictor variables and the response variable. Both X-loadings and X-loadings weights play important roles in PLS-R for variable selection, model interpretation, and prediction.

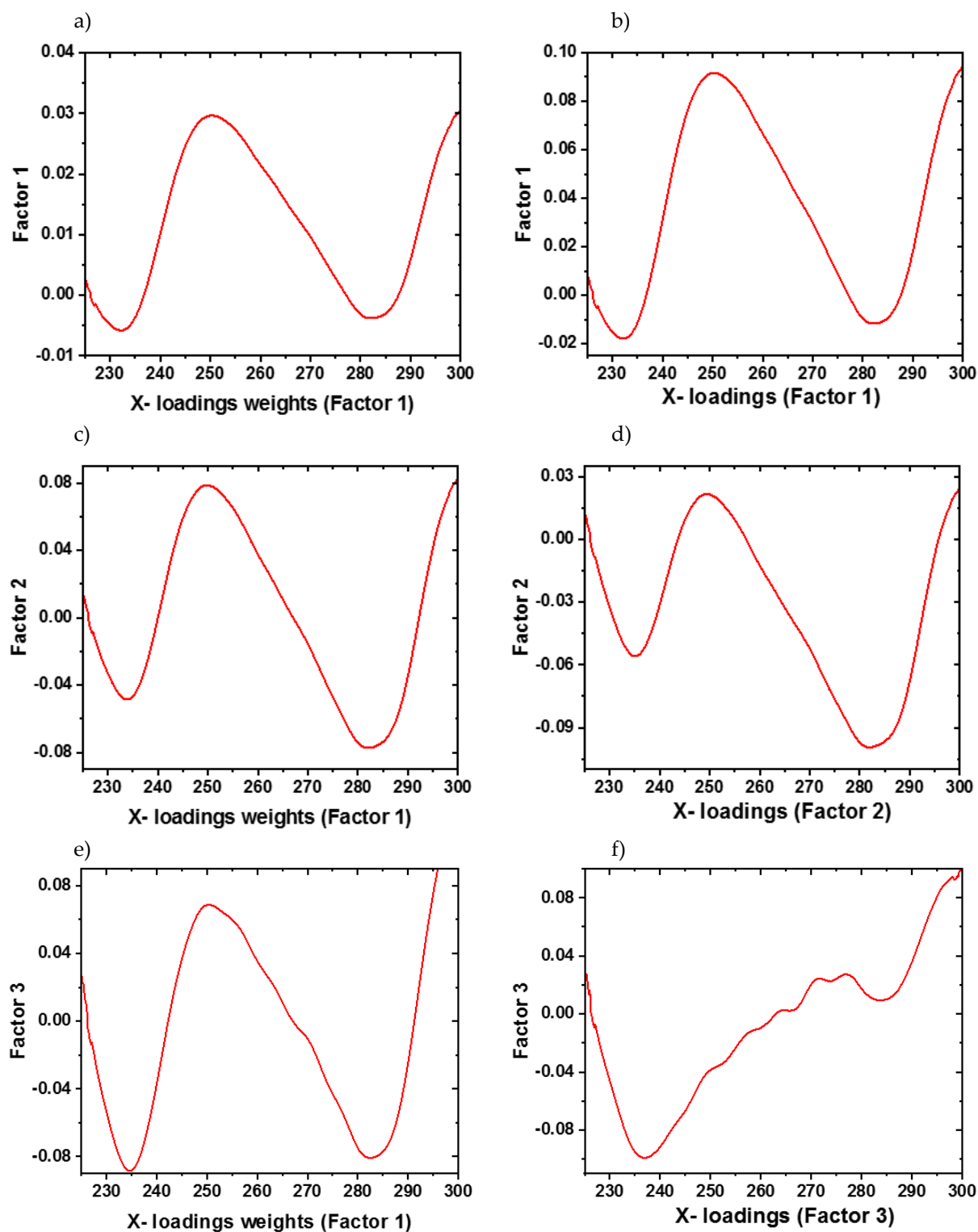


Figure S1. X-loadings weights and x-loadings for factor 1 (a,b), factor 2 (c,d) and factor 3 (e,f), respectively.