

Supplementary Materials

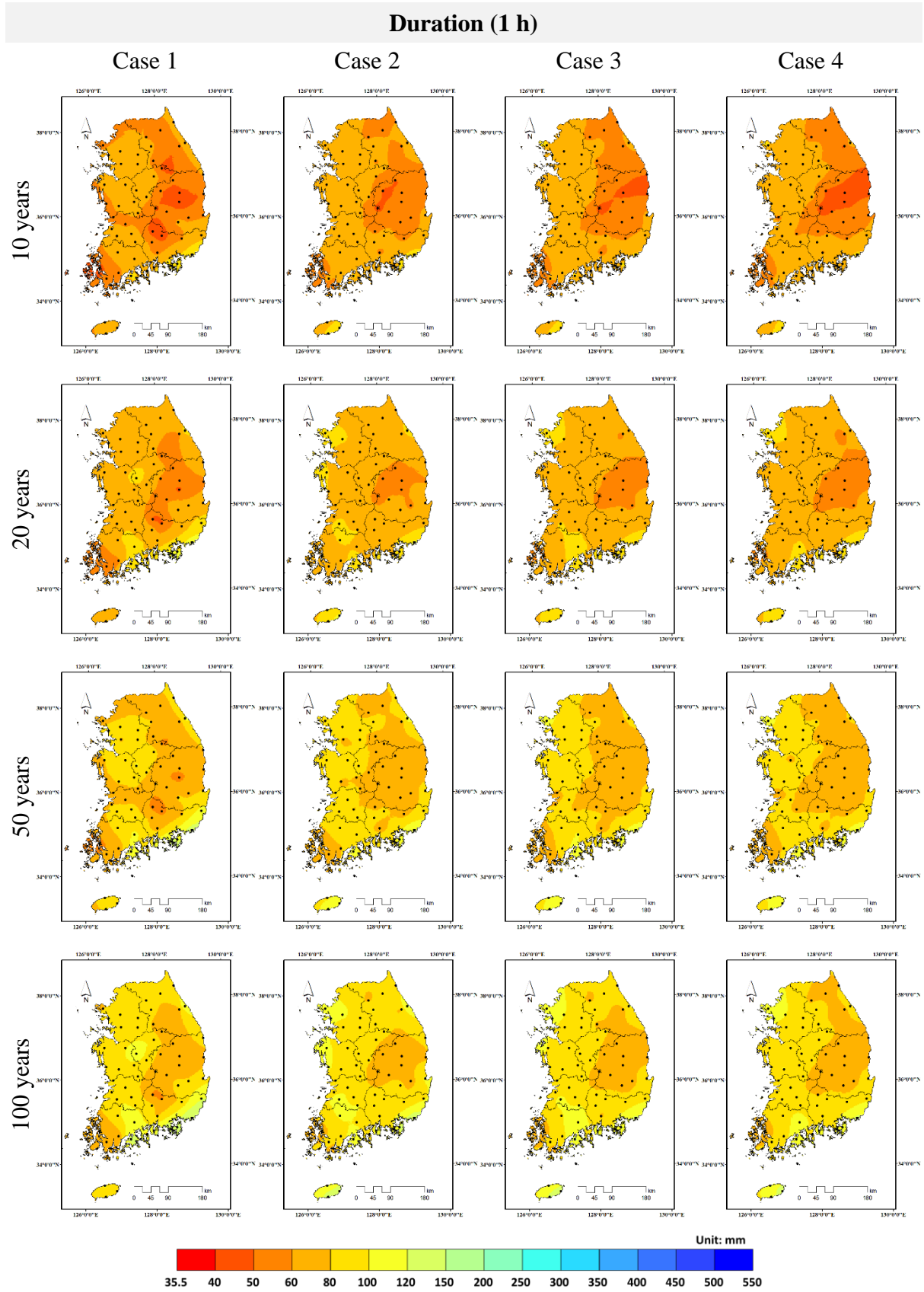


Figure S1. Spatial distribution of the 1 hour rainfall probability based on different return periods and observed rainfall periods.

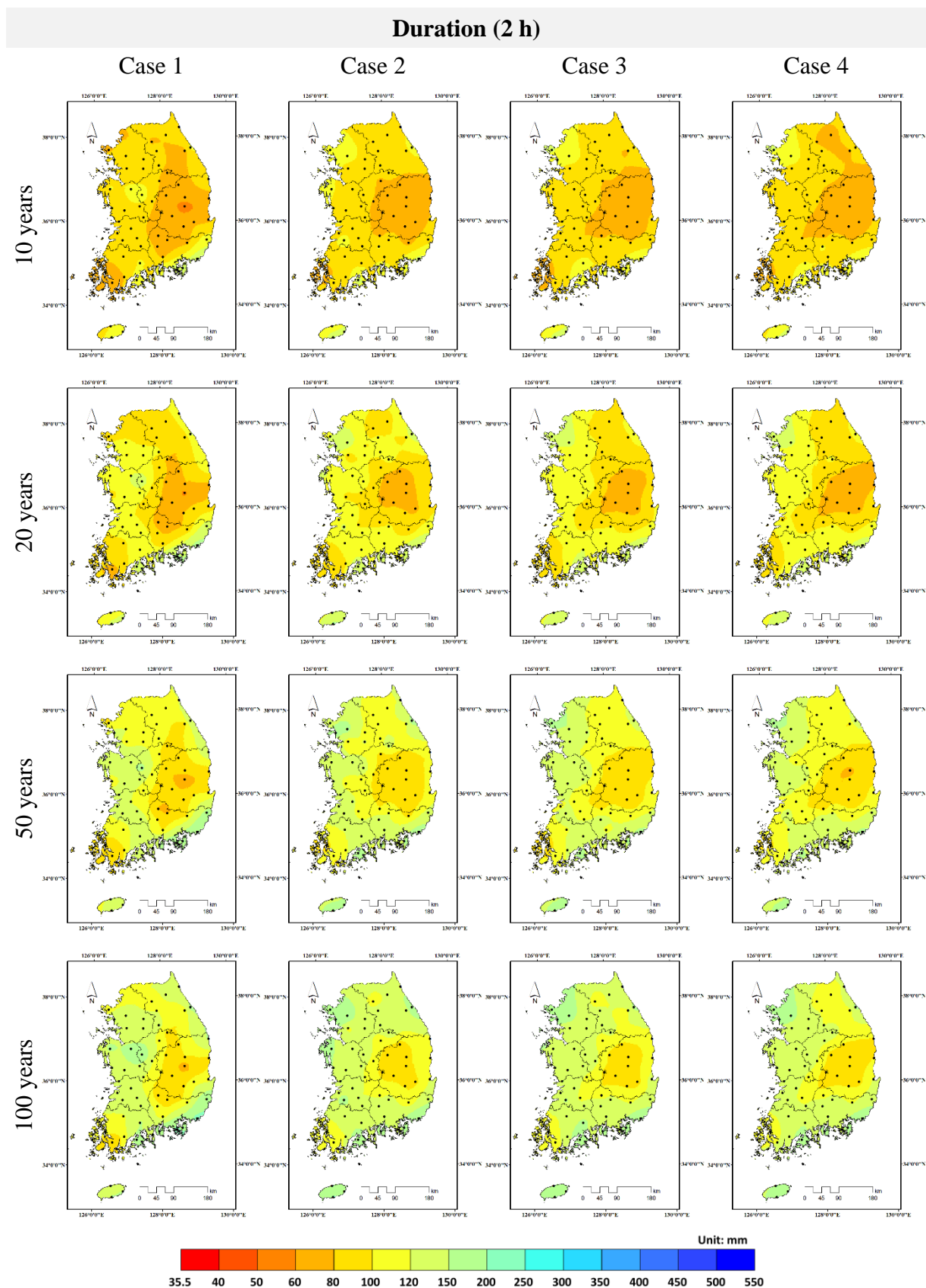


Figure S2. Spatial distribution of the 2 hour rainfall probability based on different return periods and observed rainfall periods.

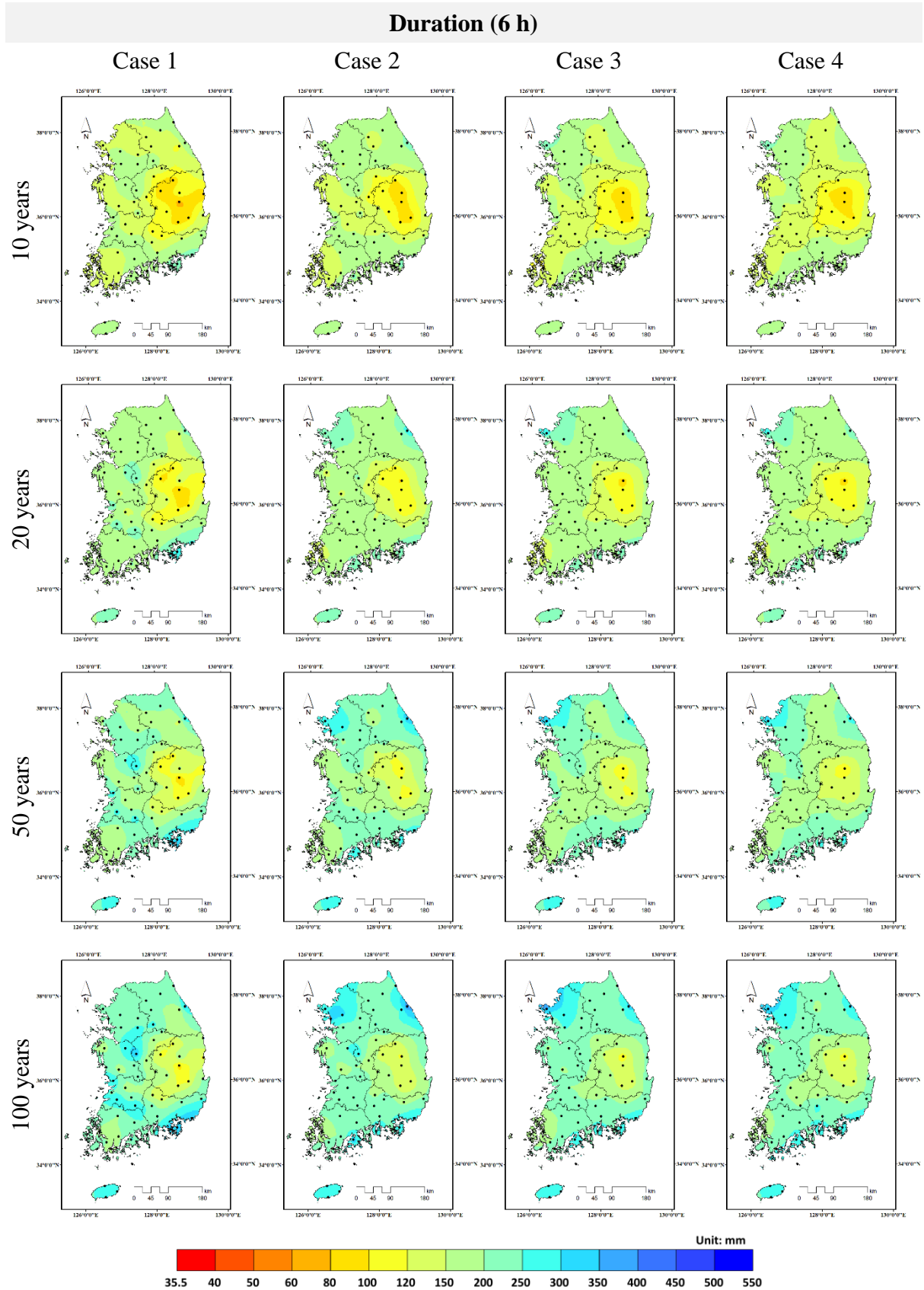


Figure S3. Spatial distribution of the 6 hour rainfall probability based on different return periods and observed rainfall periods.

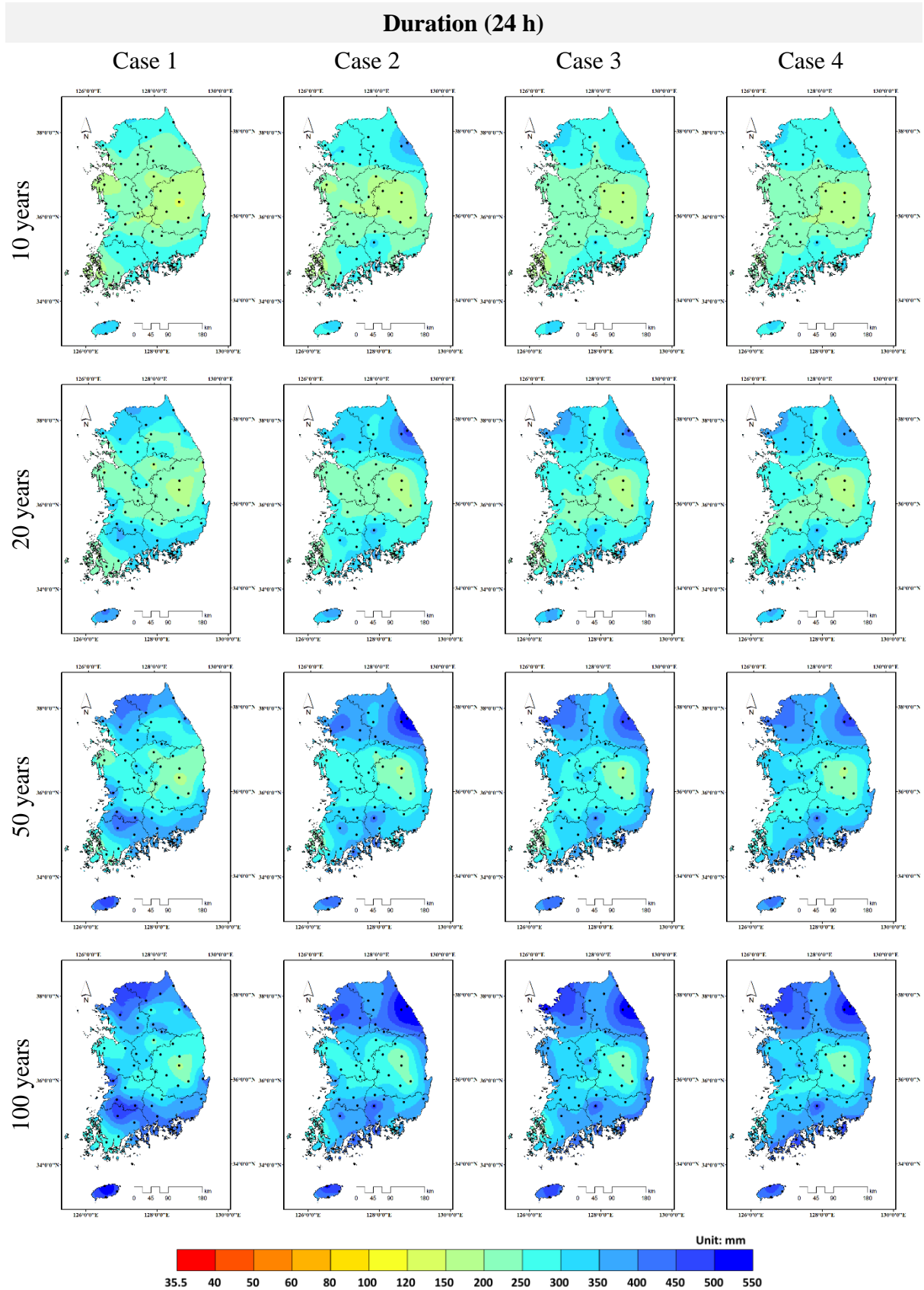


Figure S4. Spatial distribution of the 24 hour rainfall probability based on different return periods and observed rainfall periods.

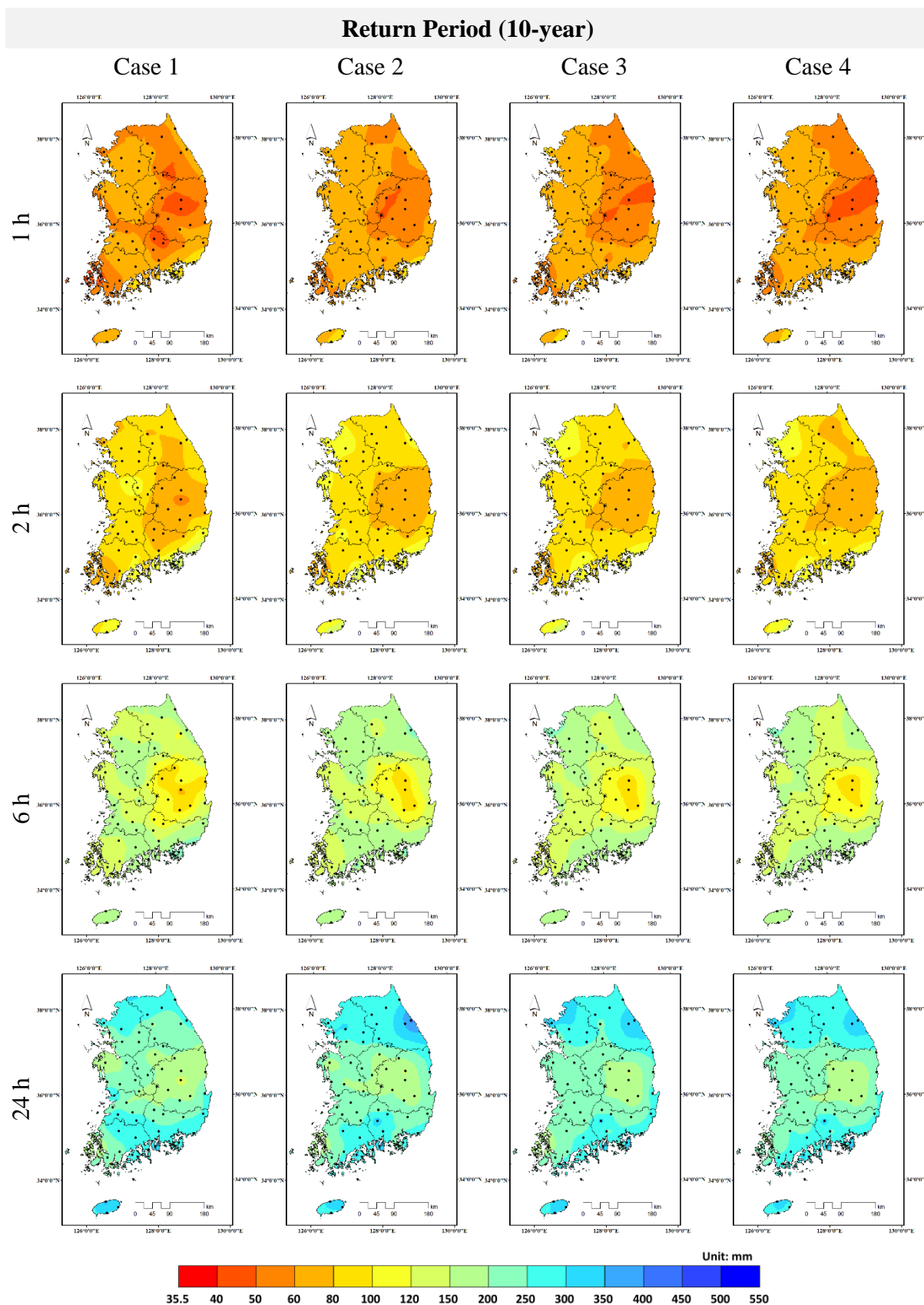


Figure S5. Spatial distribution of the 10 year return period based on different durations and observed rainfall periods.

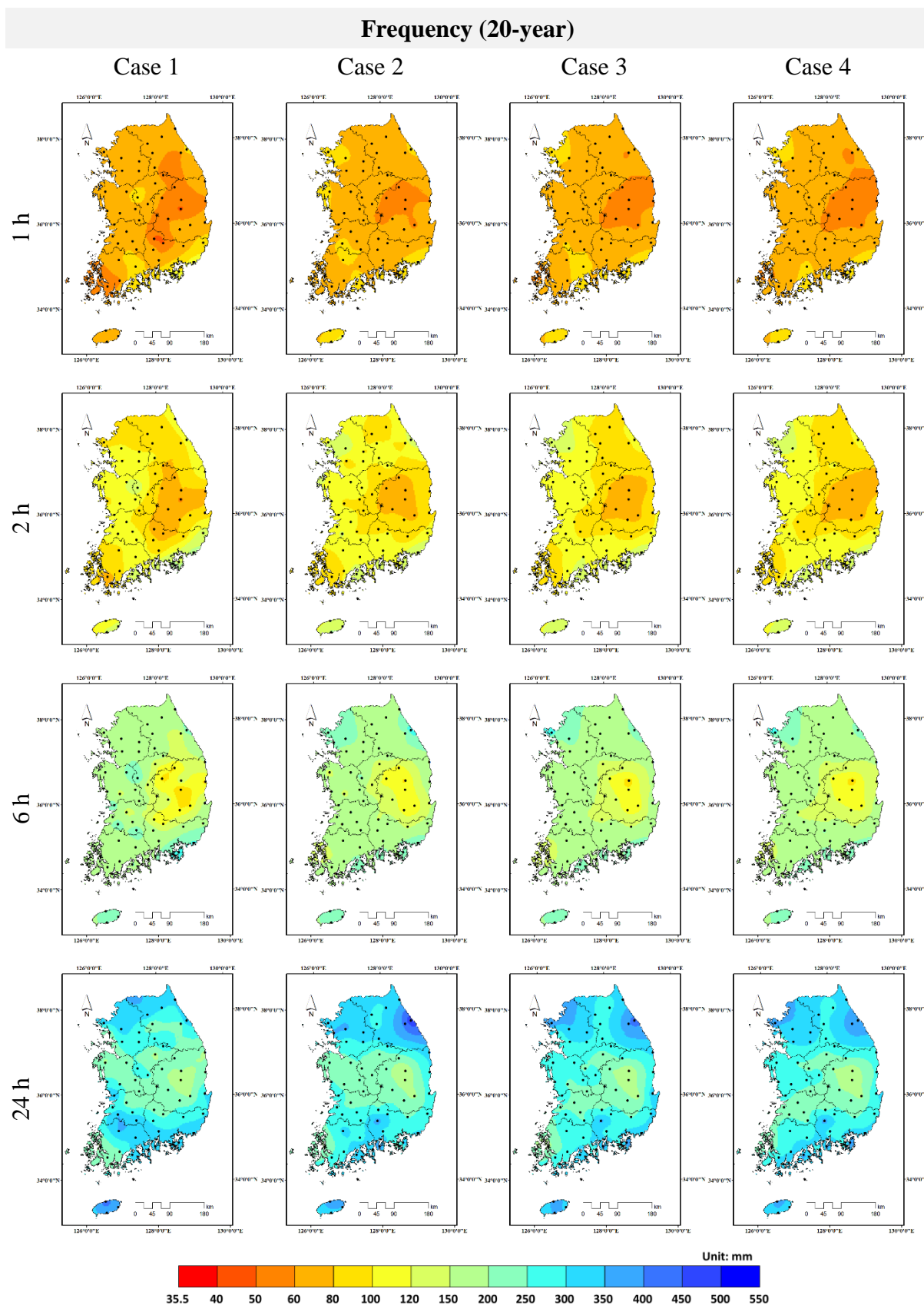


Figure S6. Spatial distribution of the 20 year return period based on different durations and observed rainfall periods.

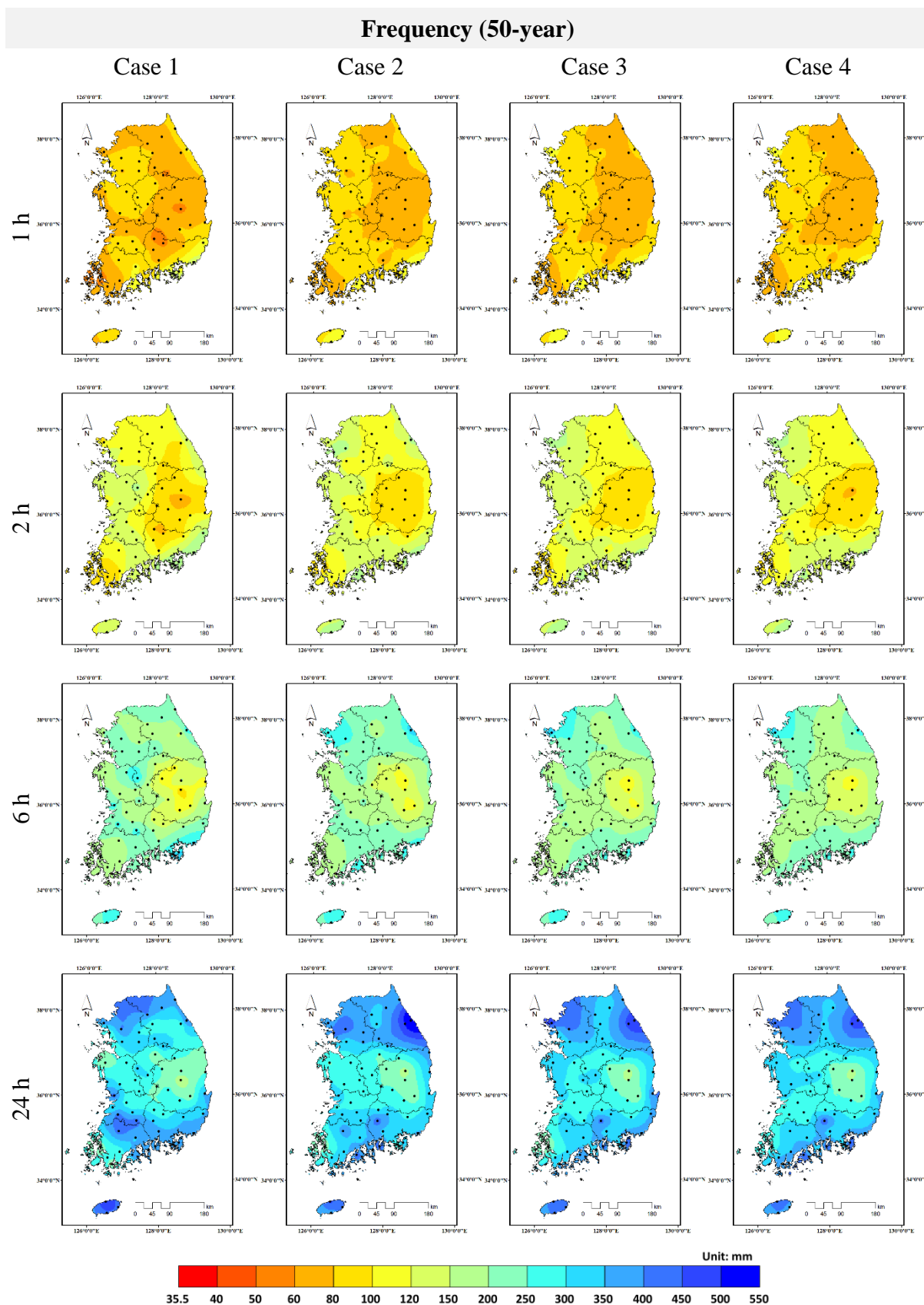


Figure S7. Spatial distribution of the 50 year return period based on different durations and observed rainfall periods.

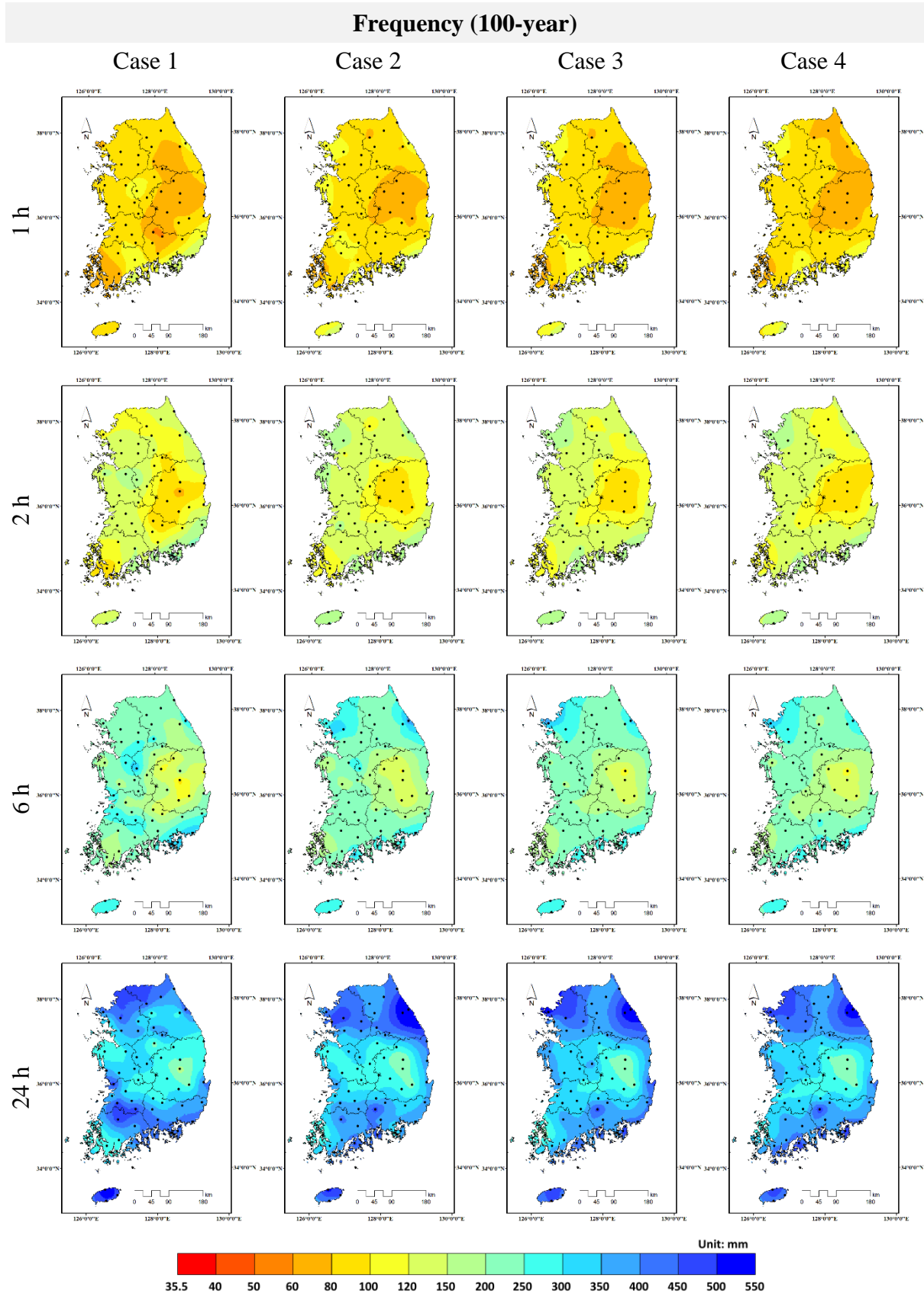


Figure S8. Spatial distribution of the 100 year return period based on different durations and observed rainfall periods.

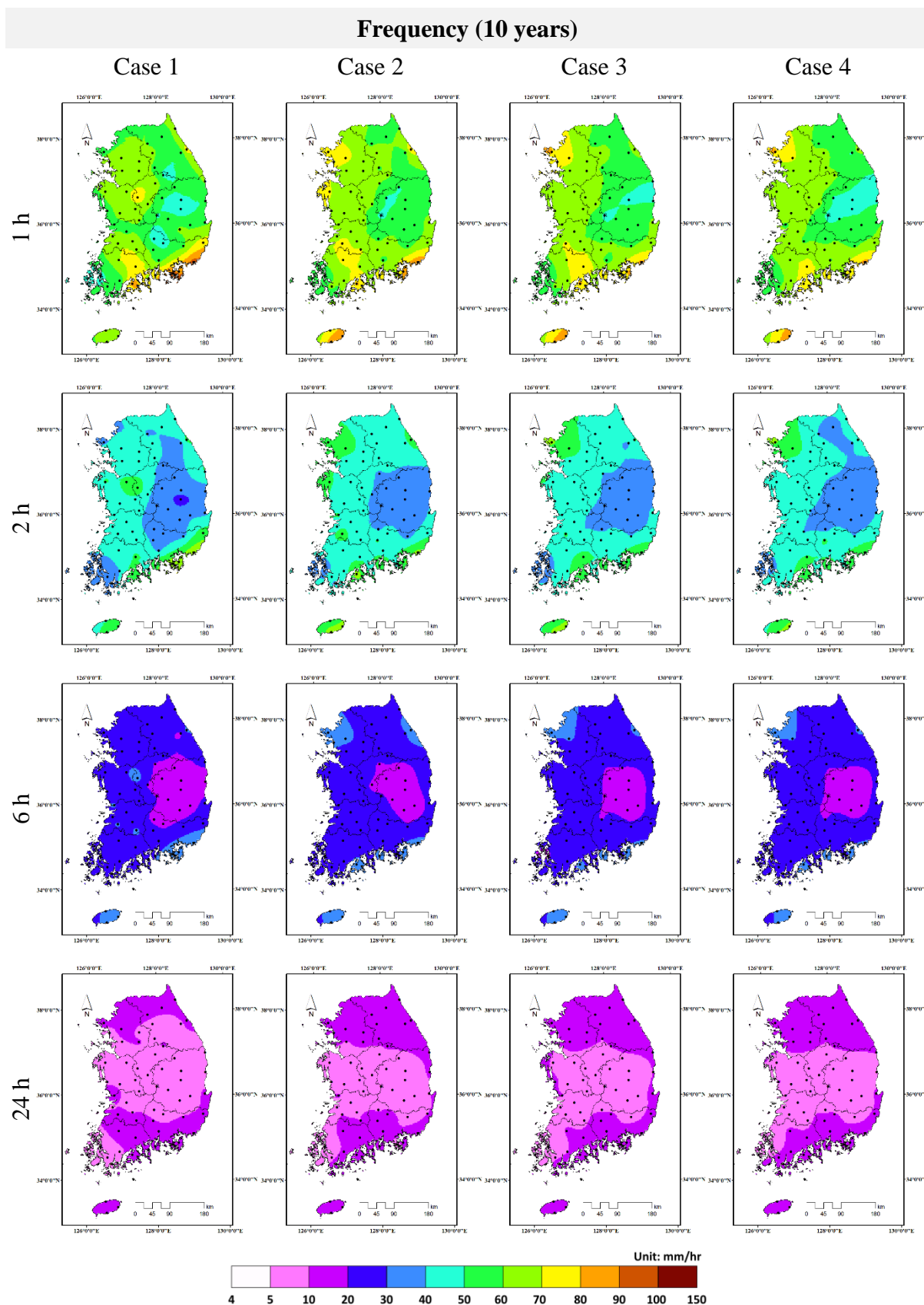


Figure S9. Spatial distribution of the rainfall intensity for a 10 year return period based on different durations and observed rainfall periods.

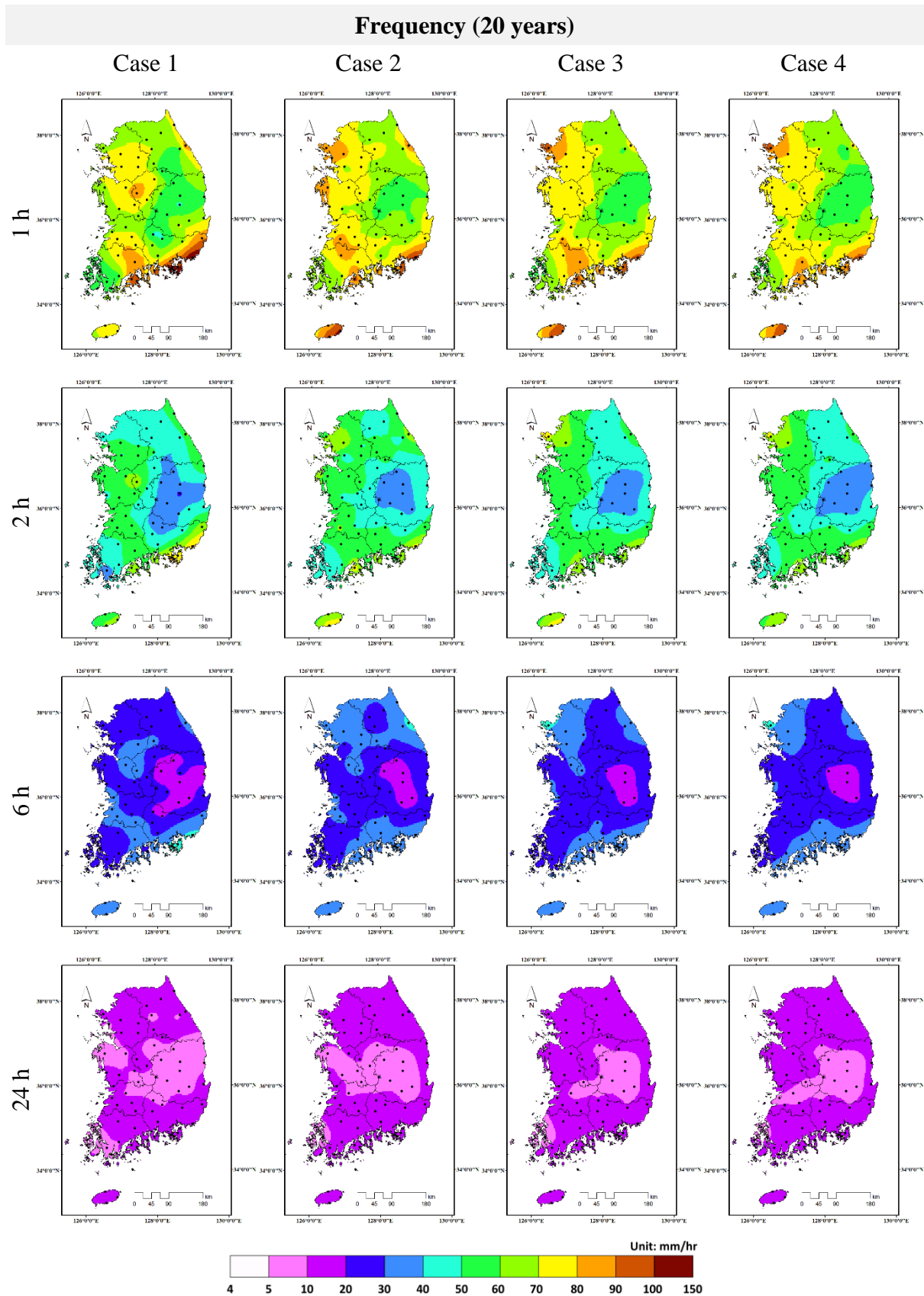


Figure S10. Spatial distribution of the rainfall intensity for a 20 year return period based on different durations and observed rainfall periods.

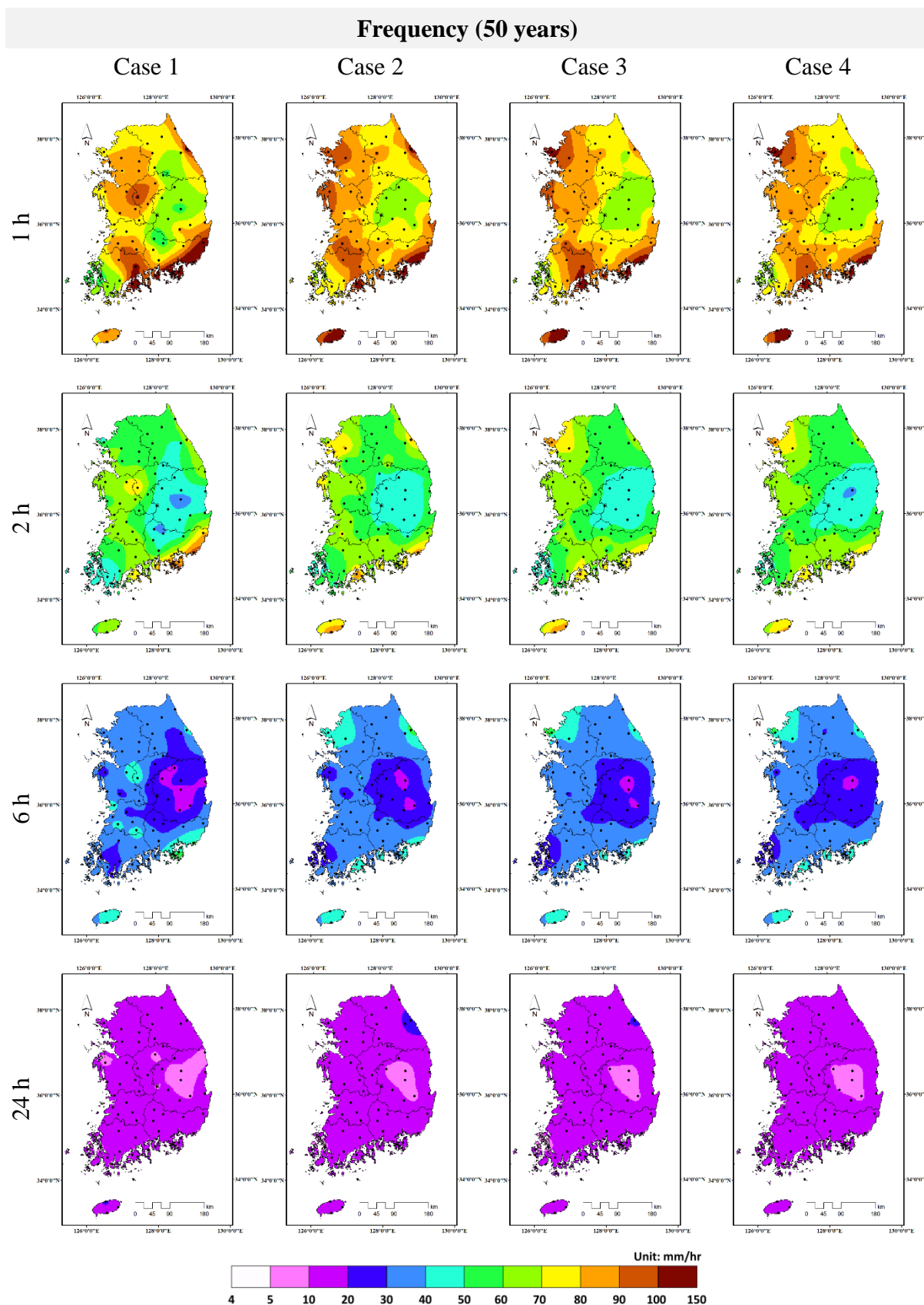


Figure S11. Spatial distribution of the rainfall intensity for a 50 year return period based on different durations and observed rainfall periods.

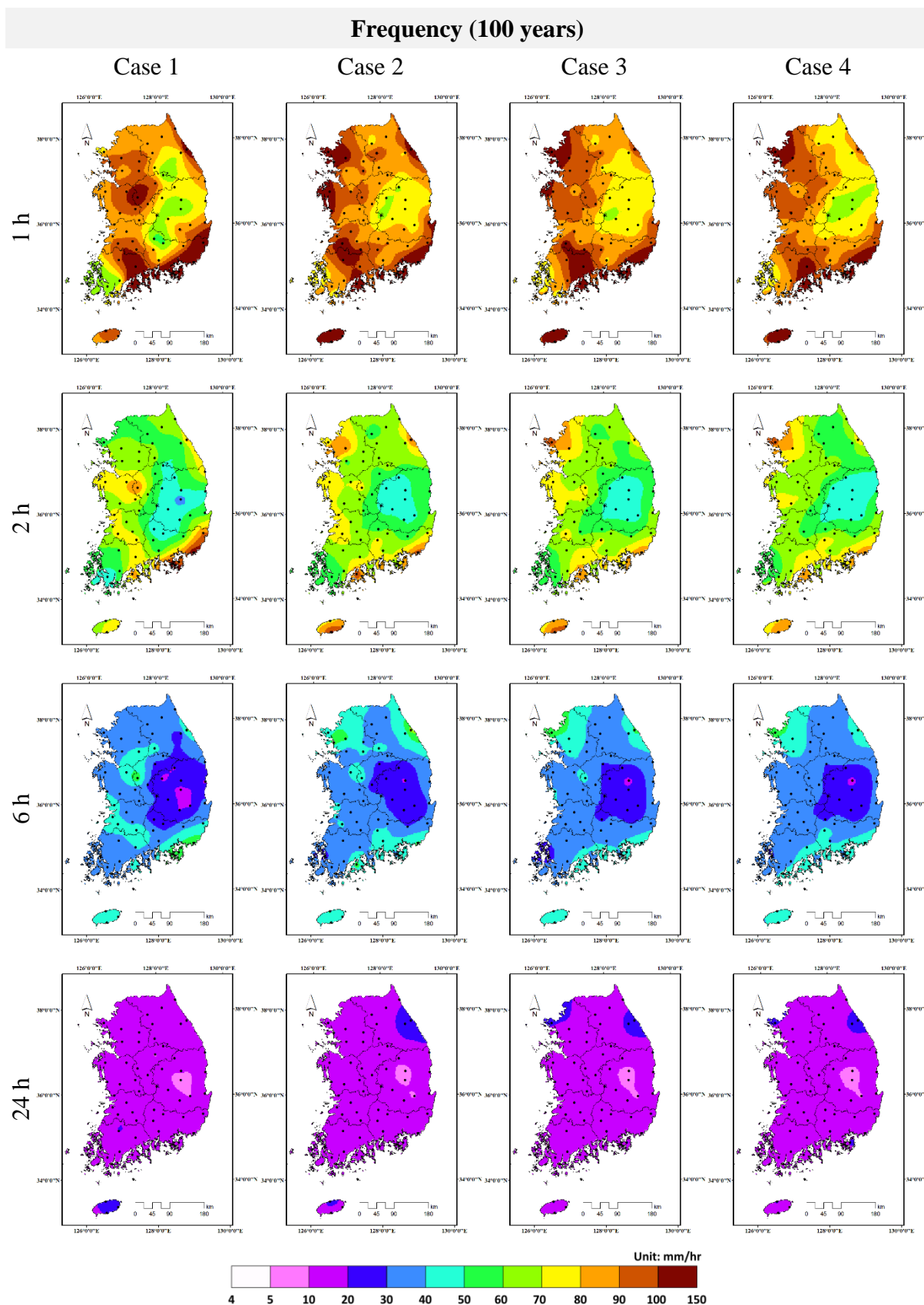


Figure S12. Spatial distribution of the rainfall intensity for a 100 year return period based on different durations and observed rainfall periods.

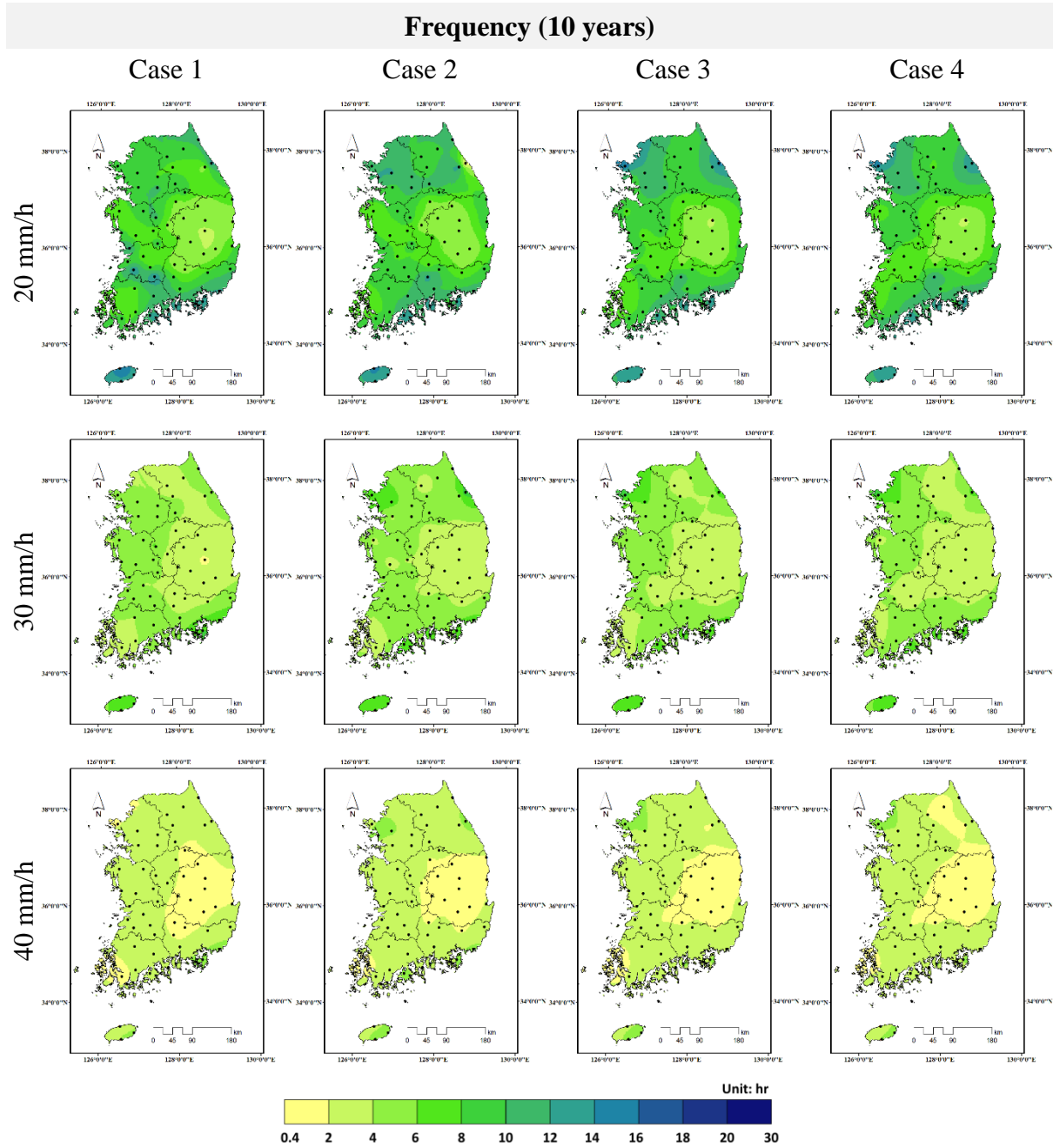


Figure S13. Spatial distribution of the rainfall duration for a 10 year return period based on different intensities and observed rainfall periods.

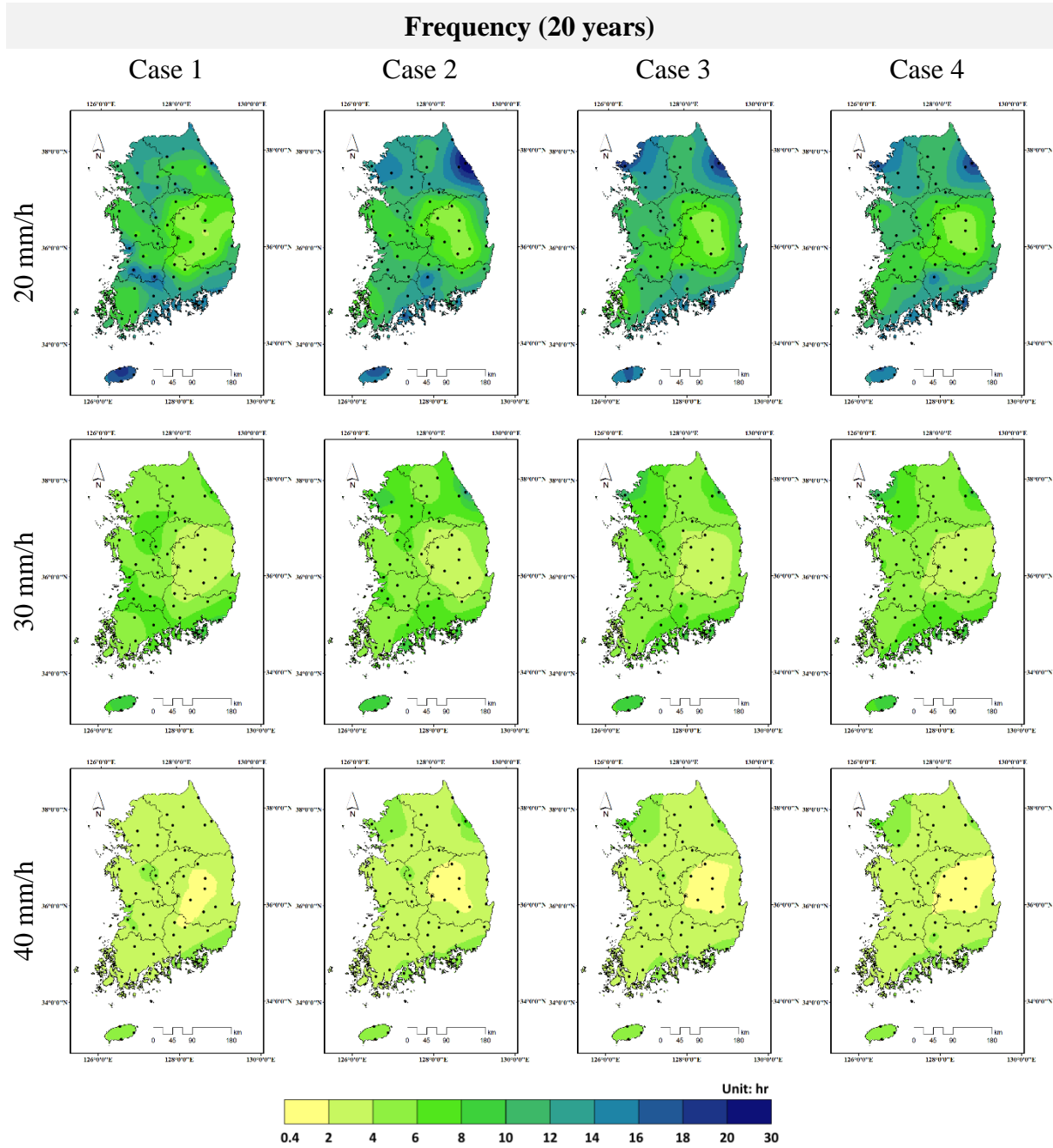


Figure S14. Spatial distribution of the rainfall duration for a 20 year return period based on different intensities and observed rainfall periods.

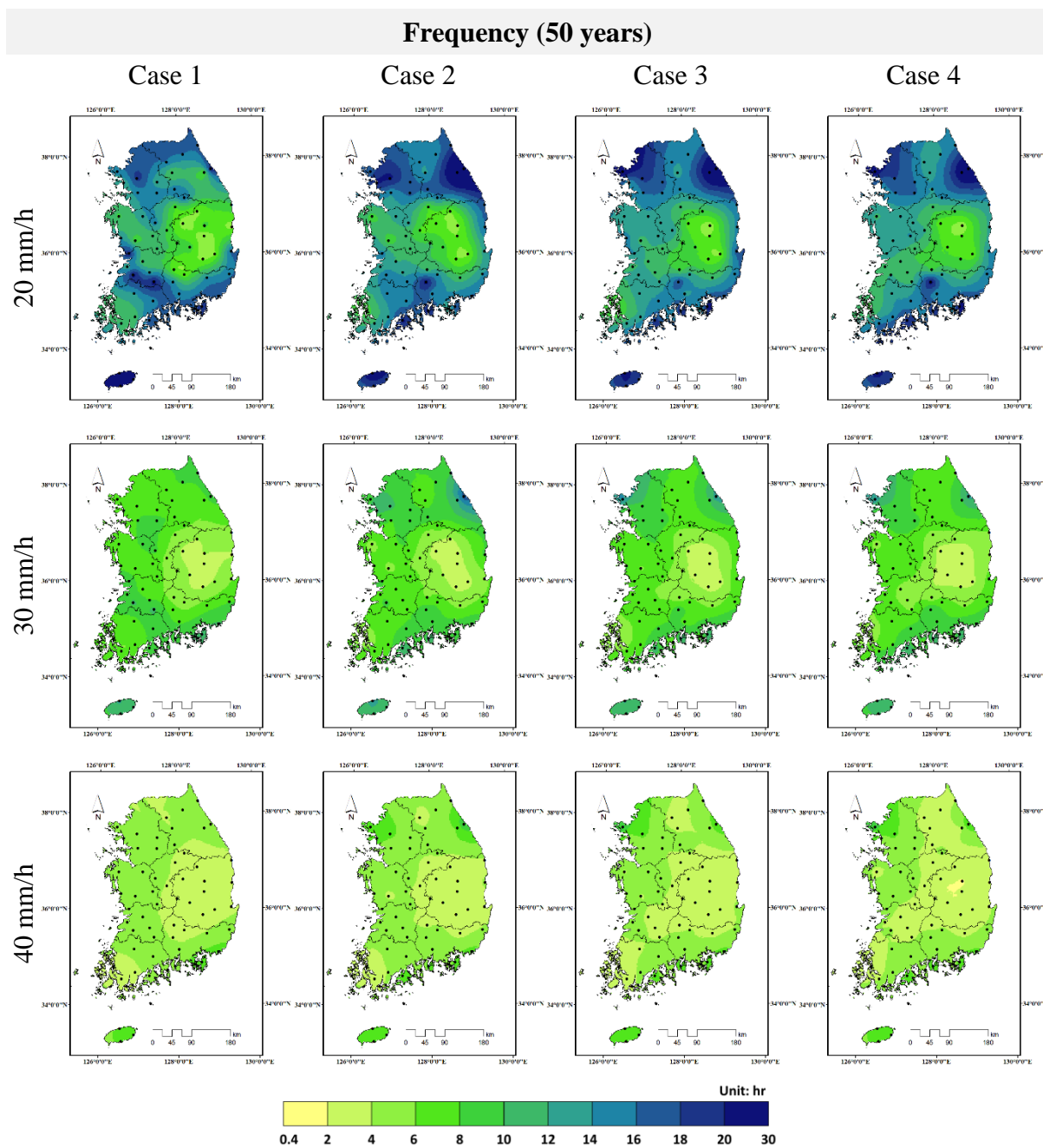


Figure S15. Spatial distribution of the rainfall duration for a 50 year return period based on different intensities and observed rainfall periods.

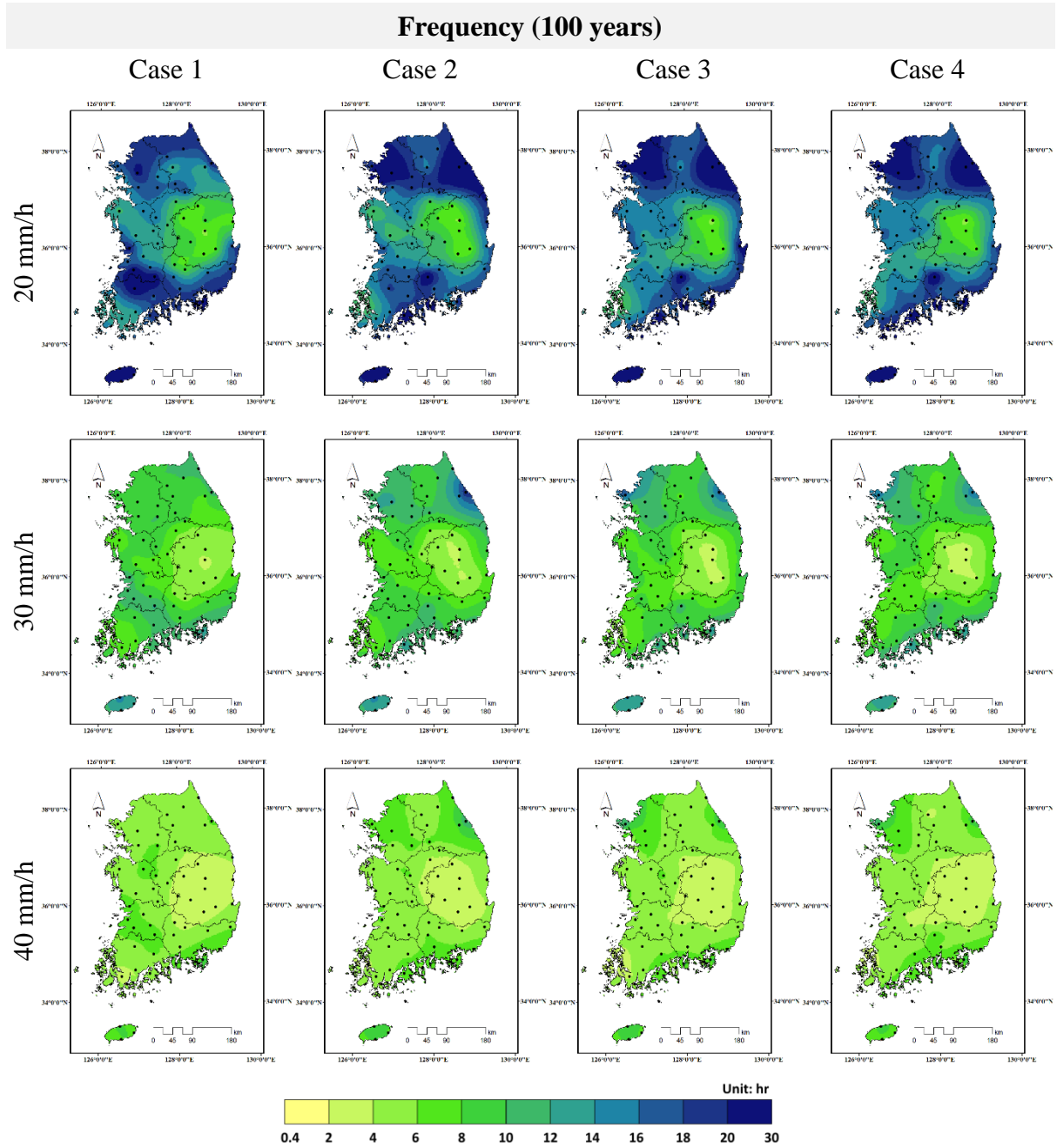


Figure S16. Spatial distribution of the rainfall duration for a 100 year return period based on different intensities and observed rainfall periods.