

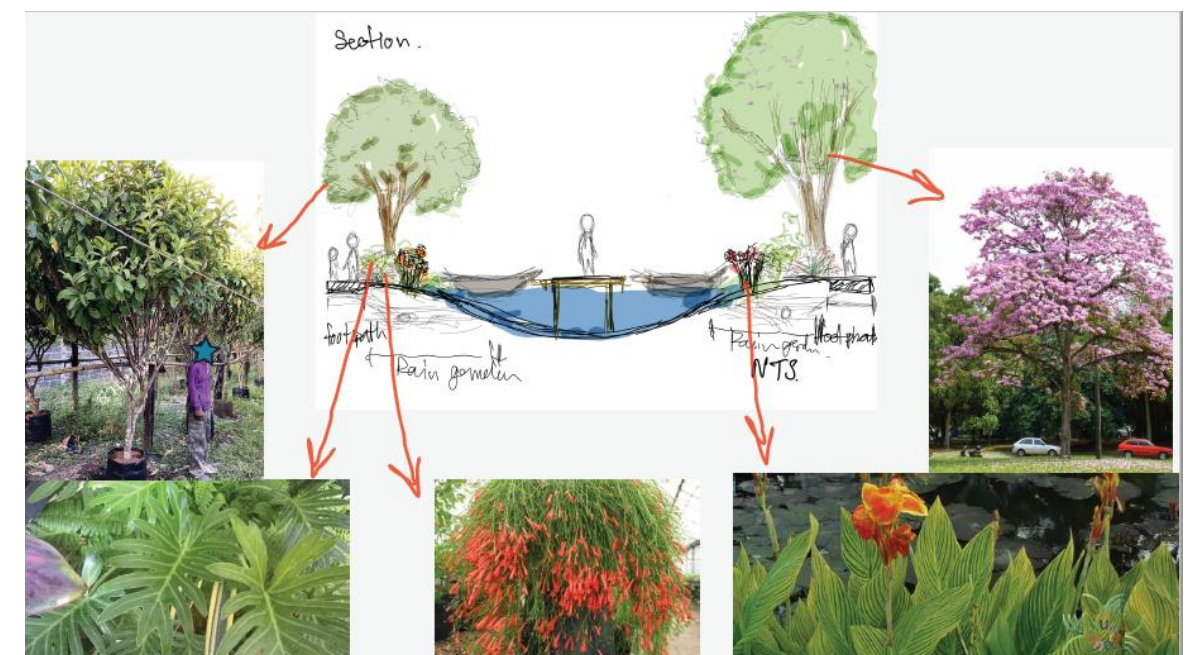
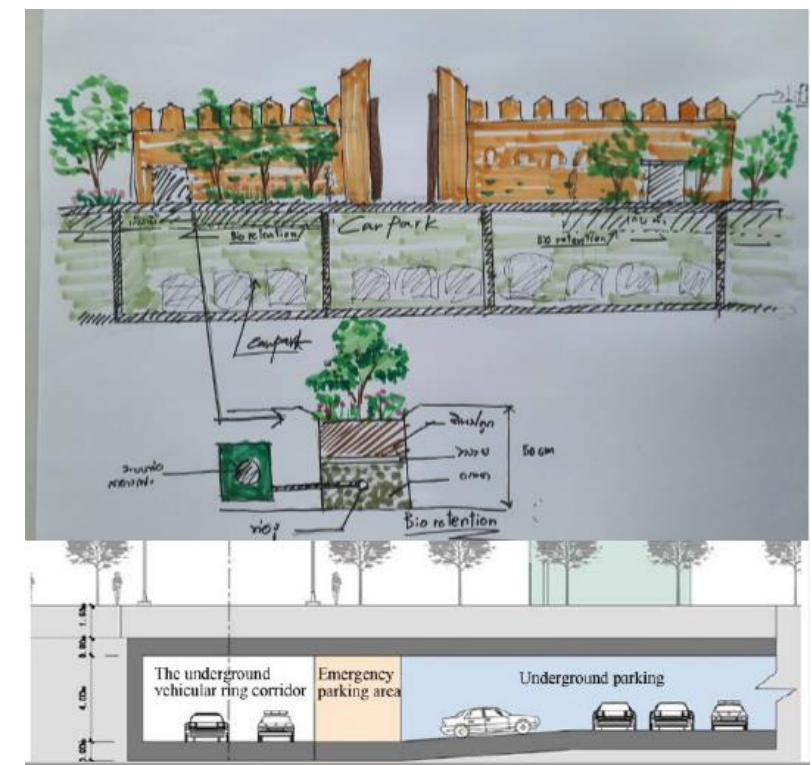
# **APPENDIX 1**

## **Workshop Design Results**



# Remake

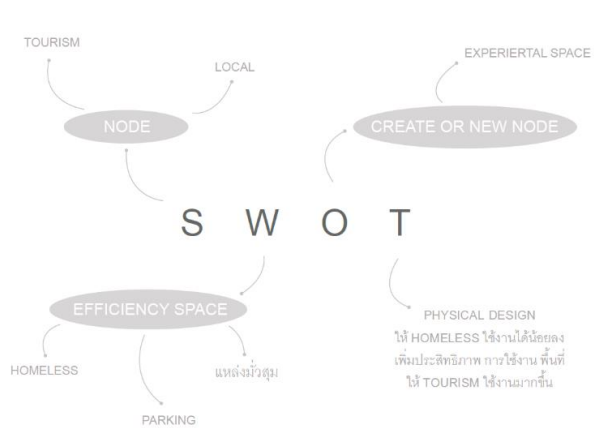
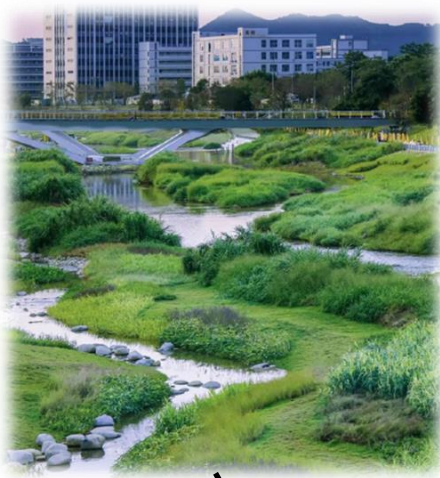
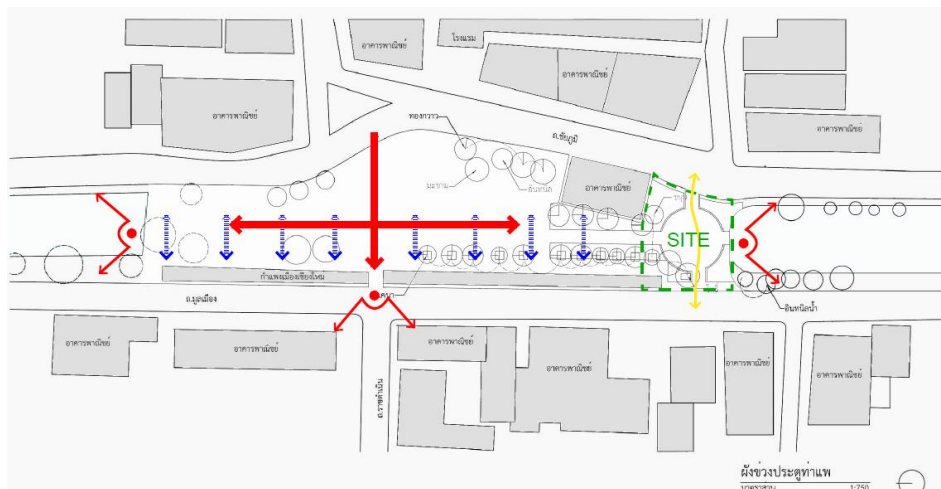
A new tourist attraction that involves art on walls and canoeing activities along urban canals can accommodate many tourists. There is an underground parking area at the port gate because the original port gate was a tourist spot, but it did not have parking. Additionally, there is a drainage pipe made from natural materials, layered from topsoil, sand, and gravel. This acts as a water filter before it enters the urban canal. The filtering area can also be turned into a green space for the venue.





# Water Retention Garden

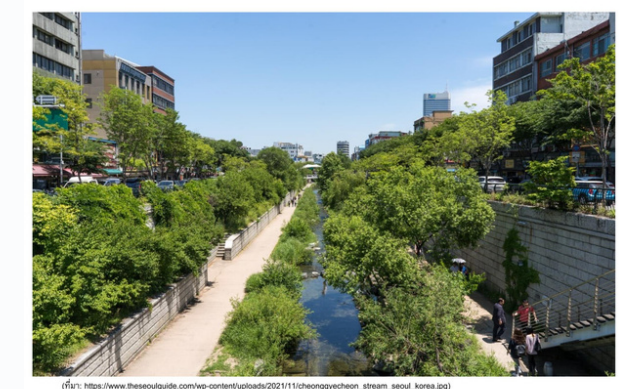
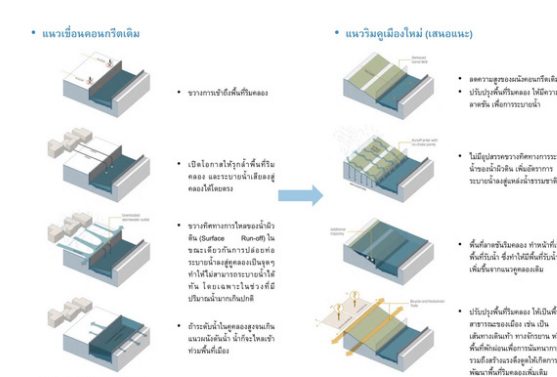
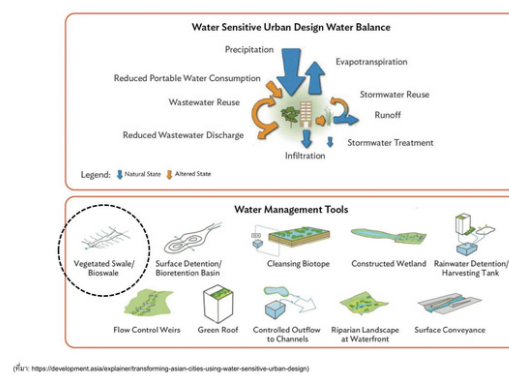
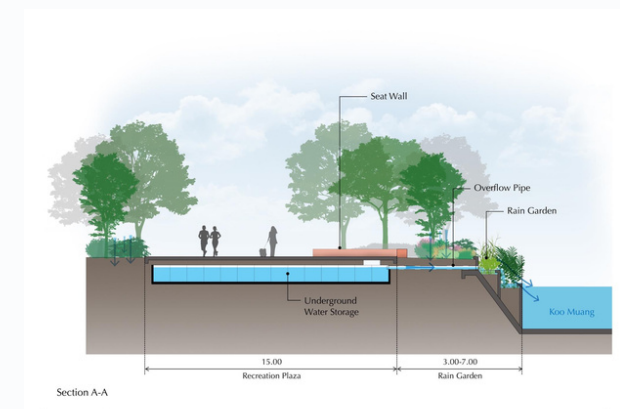
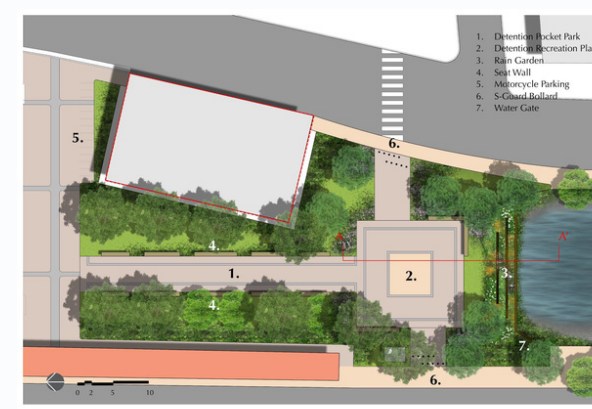
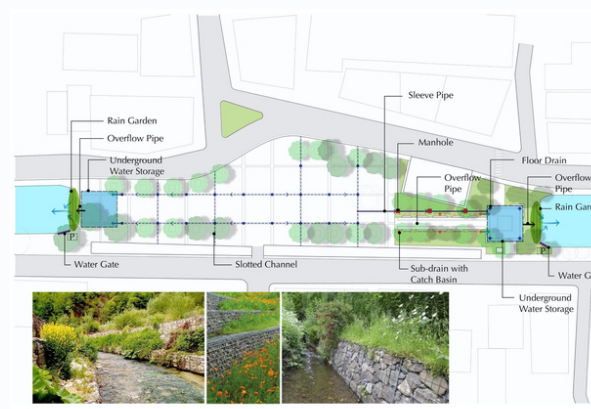
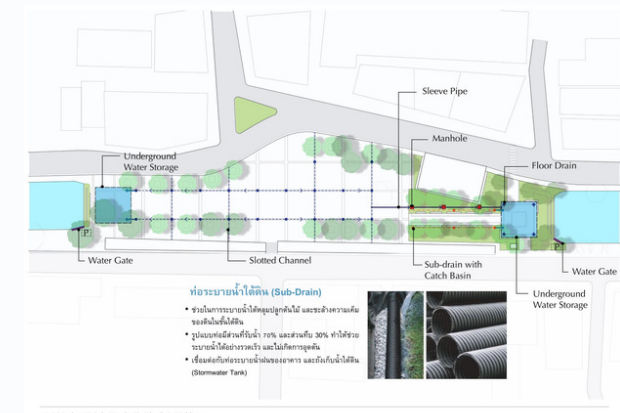
Increase the usable area and green space. Use native plants and spontaneous urban vegetation to treat rainwater.





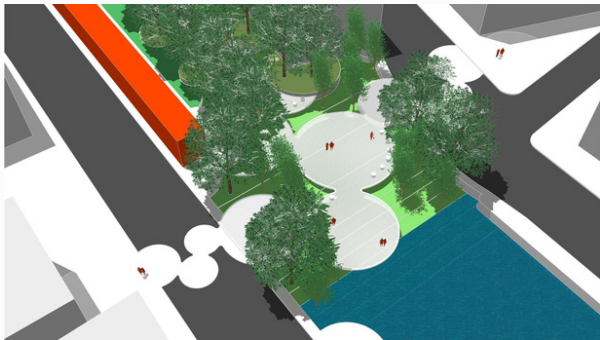
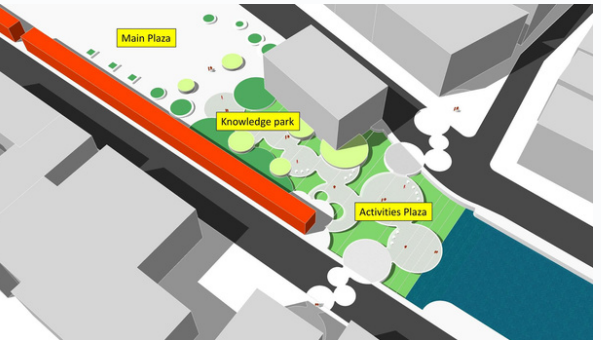
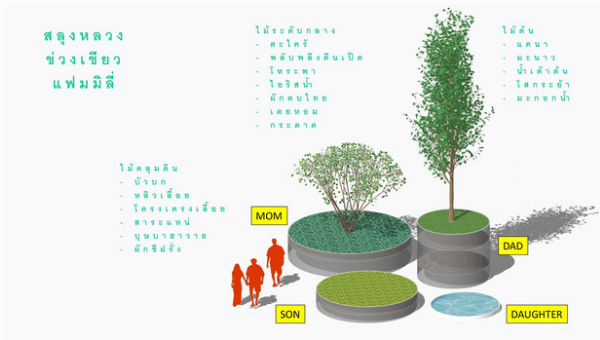
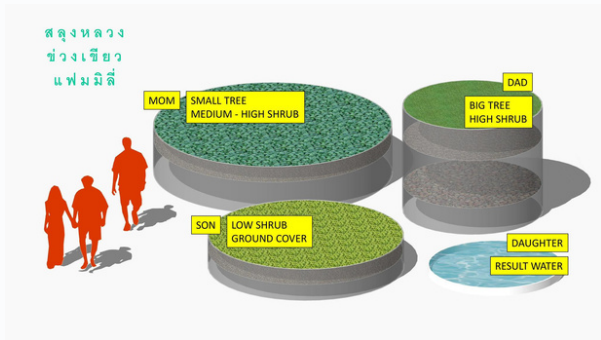
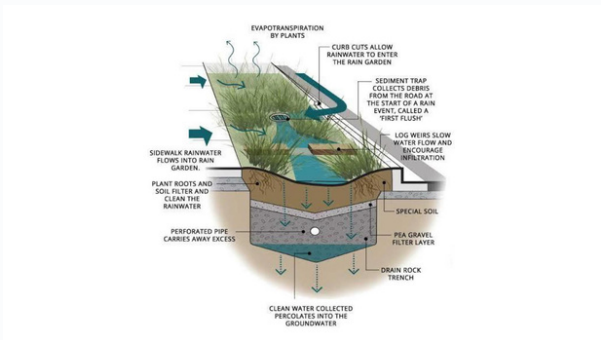
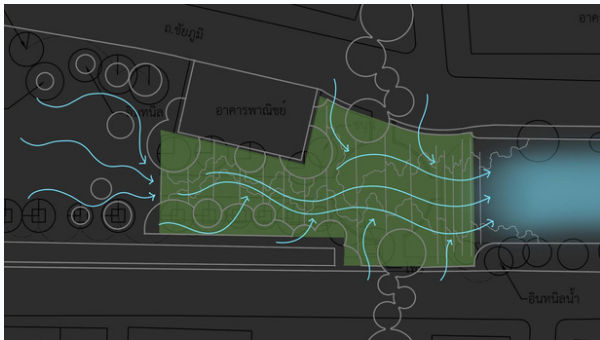
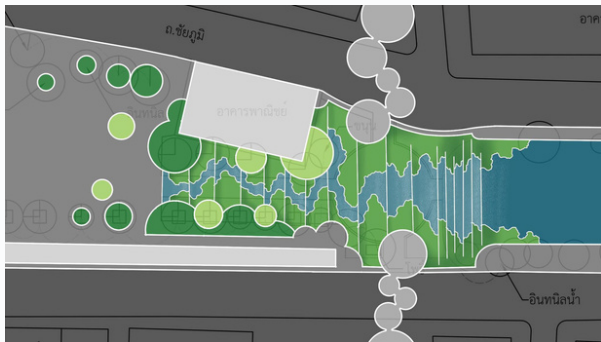
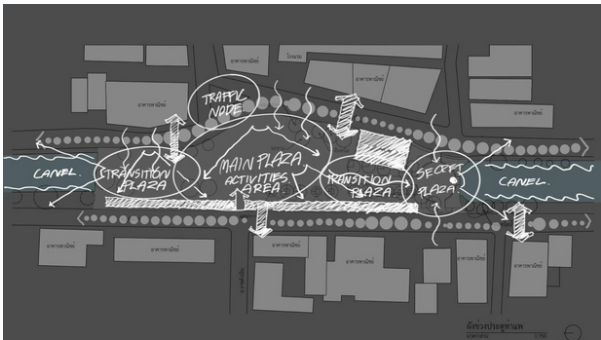
# Stormwater Management in Tha Phae

The design involves transforming impermeable hard surfaces that don't allow water to seep through. There is an underground water storage tank, underground drainage pipes, and connections to public water pipes. Plants are cultivated in areas where water is discharged to allow them to absorb, filter the wastewater, and alleviate flooding issues.



# Great Bowl & Green Yard

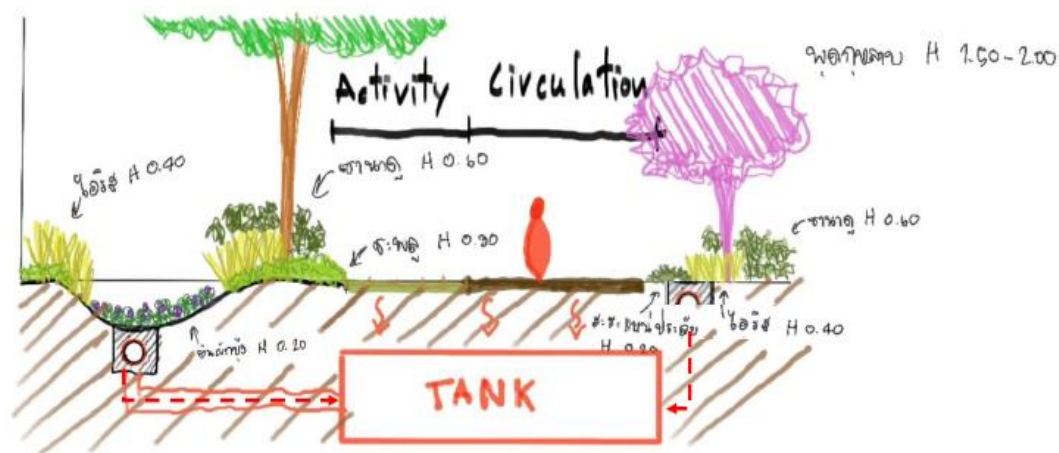
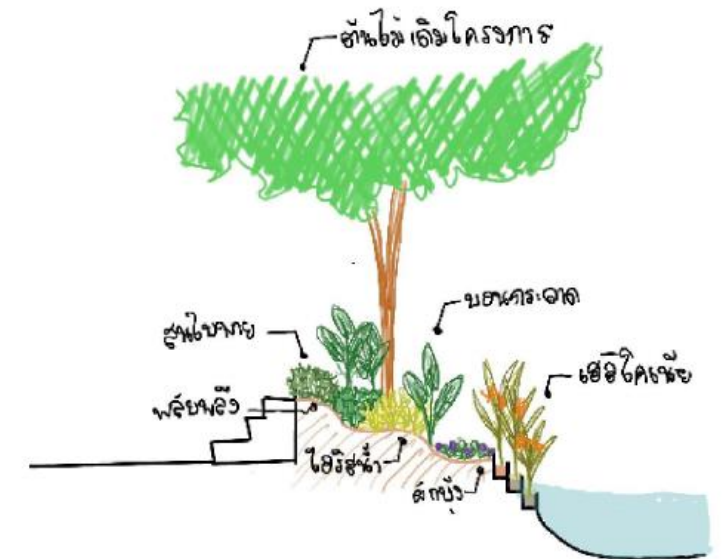
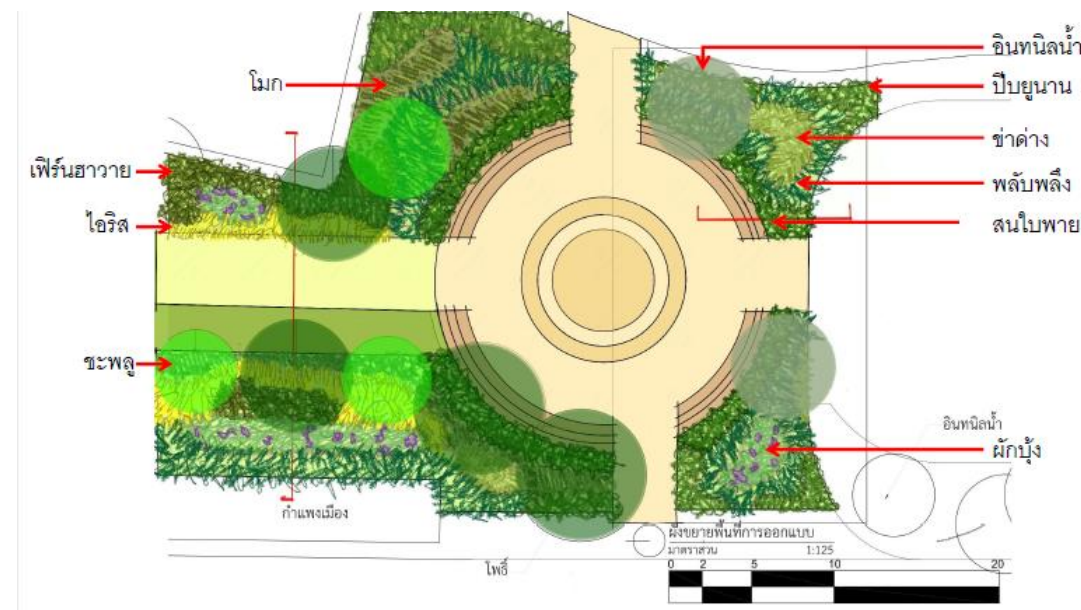
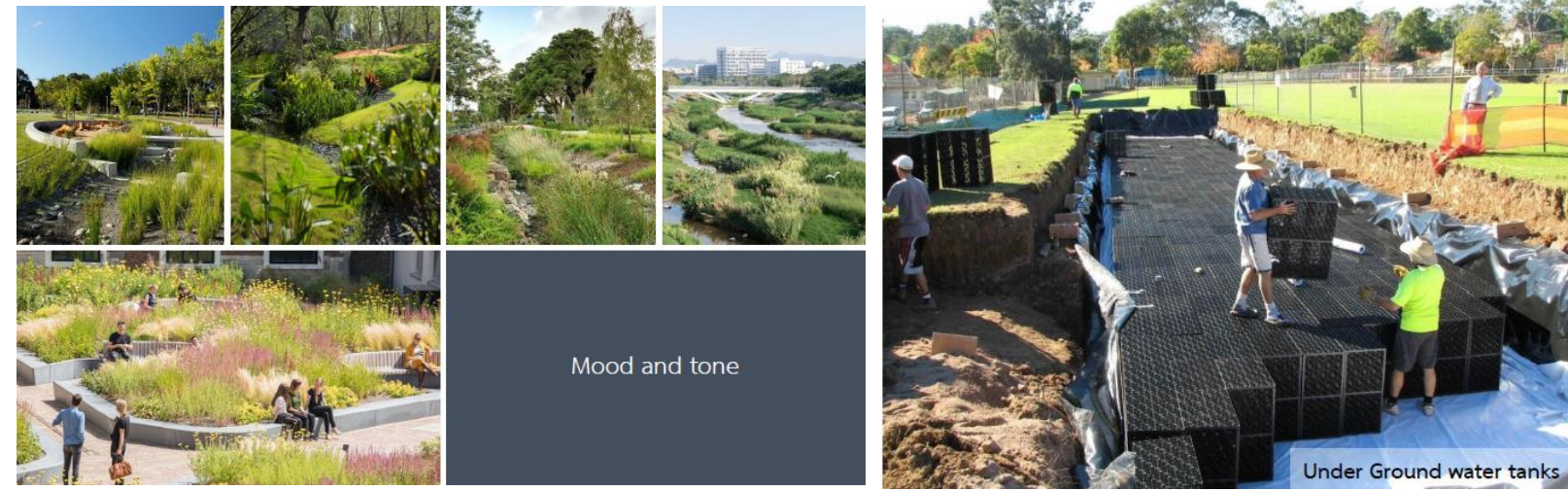
The design includes integrated learning for people to understand the rainwater treatment process. By creating visible basins (ponds), the steps of the process are showcased, from treatment to the use of vegetation for absorption, filtration, and flood mitigation.





# Tank

The design is for a green space intended to slow down and absorb rainwater using plants that are resistant to waterlogging and sunlight. An underground water tank is integrated to assist with drainage in flooded areas. Accessible spaces within various areas of the location are also expanded.





# Spiral Prototype

Consideration is given to filtering standing water or rainwater for daily use. There are two filtering methods. The first one uses various materials, including gravel, sand, and charcoal. The second method employs various plants that can absorb and utilize the water.

