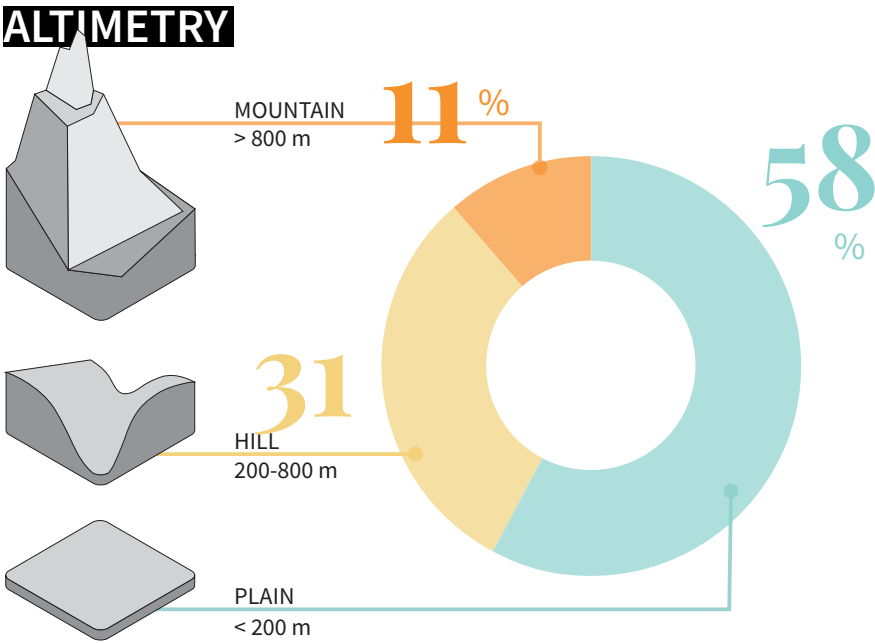
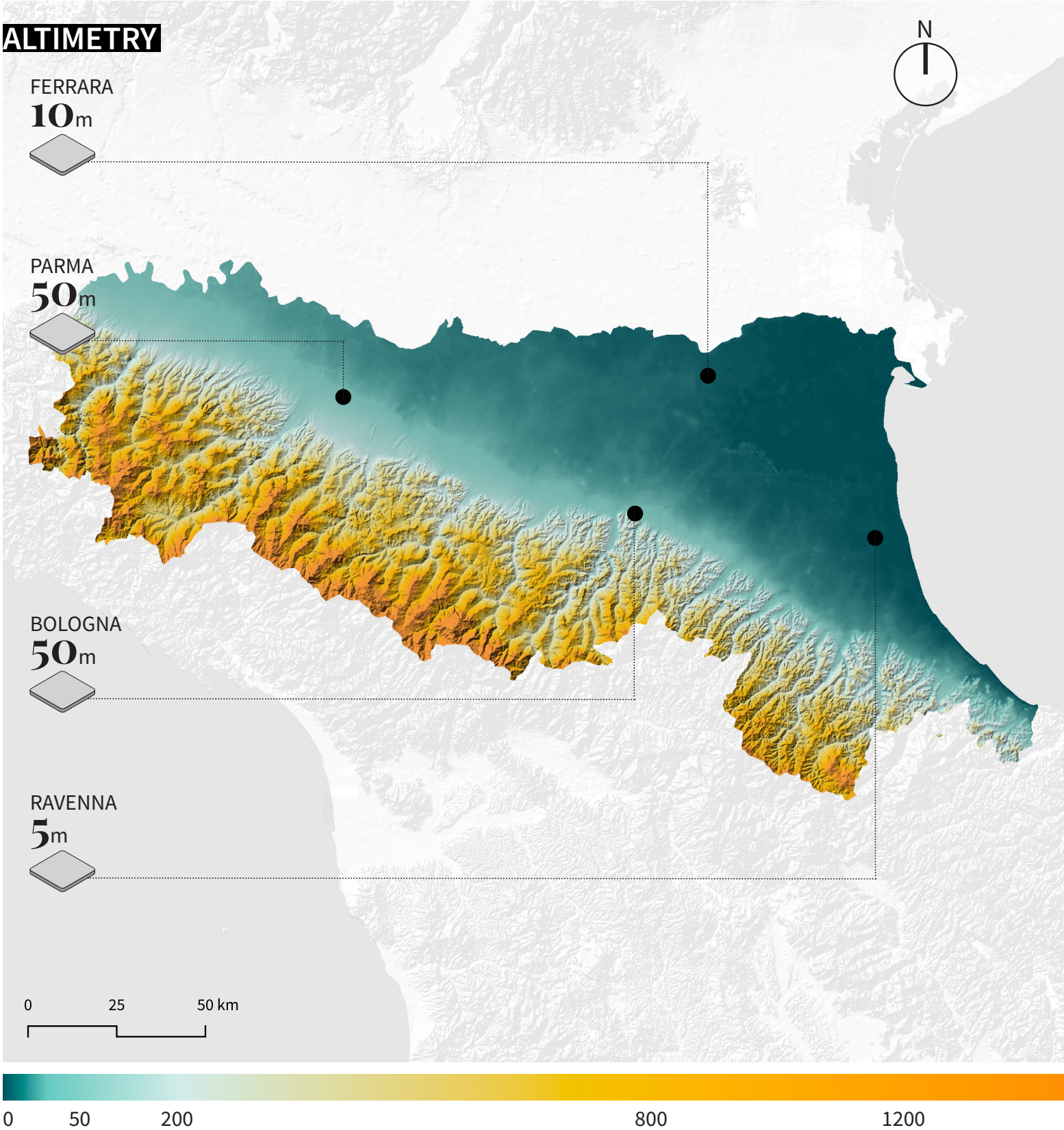


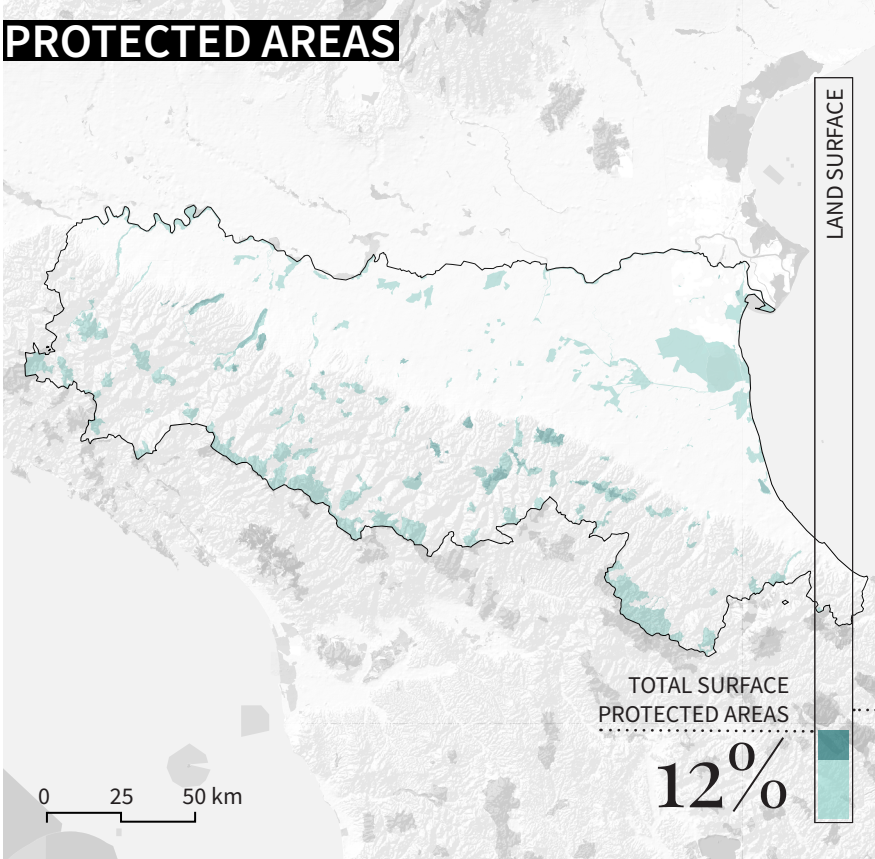
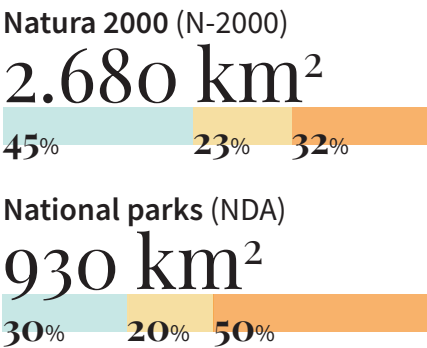
Morphology and natural resources



PROTECTED AREAS

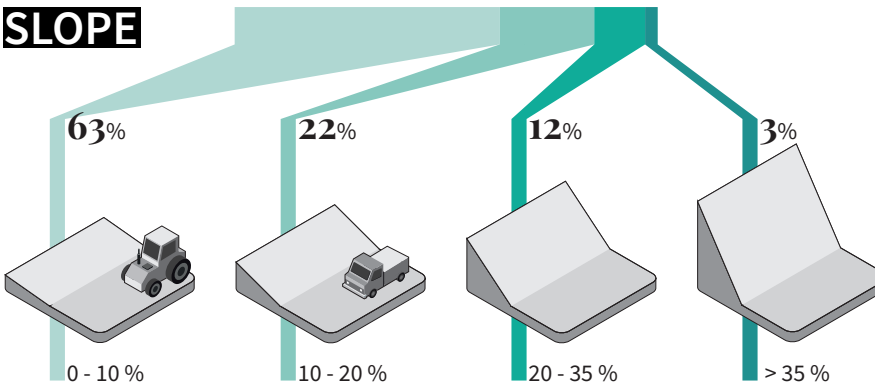
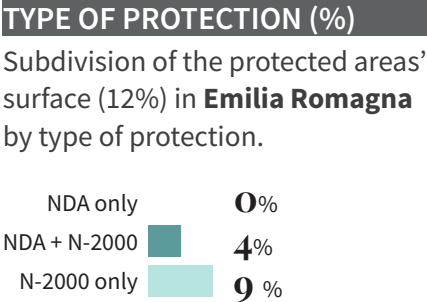
Where are protected areas mainly located in **Emilia Romagna**?

LOCATION BY ALTIMETRY (%)



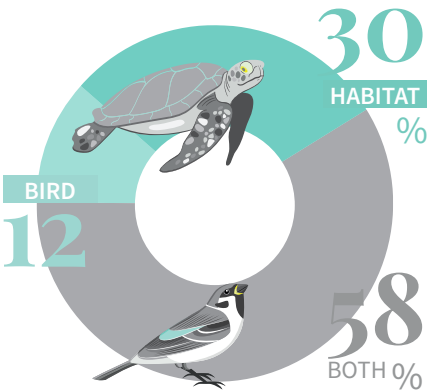
The map represent all the **Nationally Designated Areas (NDA)** such as national or regional parks and the **Natura 2000 (N-2000)** areas.

These (regulated by State's and by the European Union's under the Birds (1979) and Habitat (1992) Directives) are key assets to protect Europe's biodiversity.

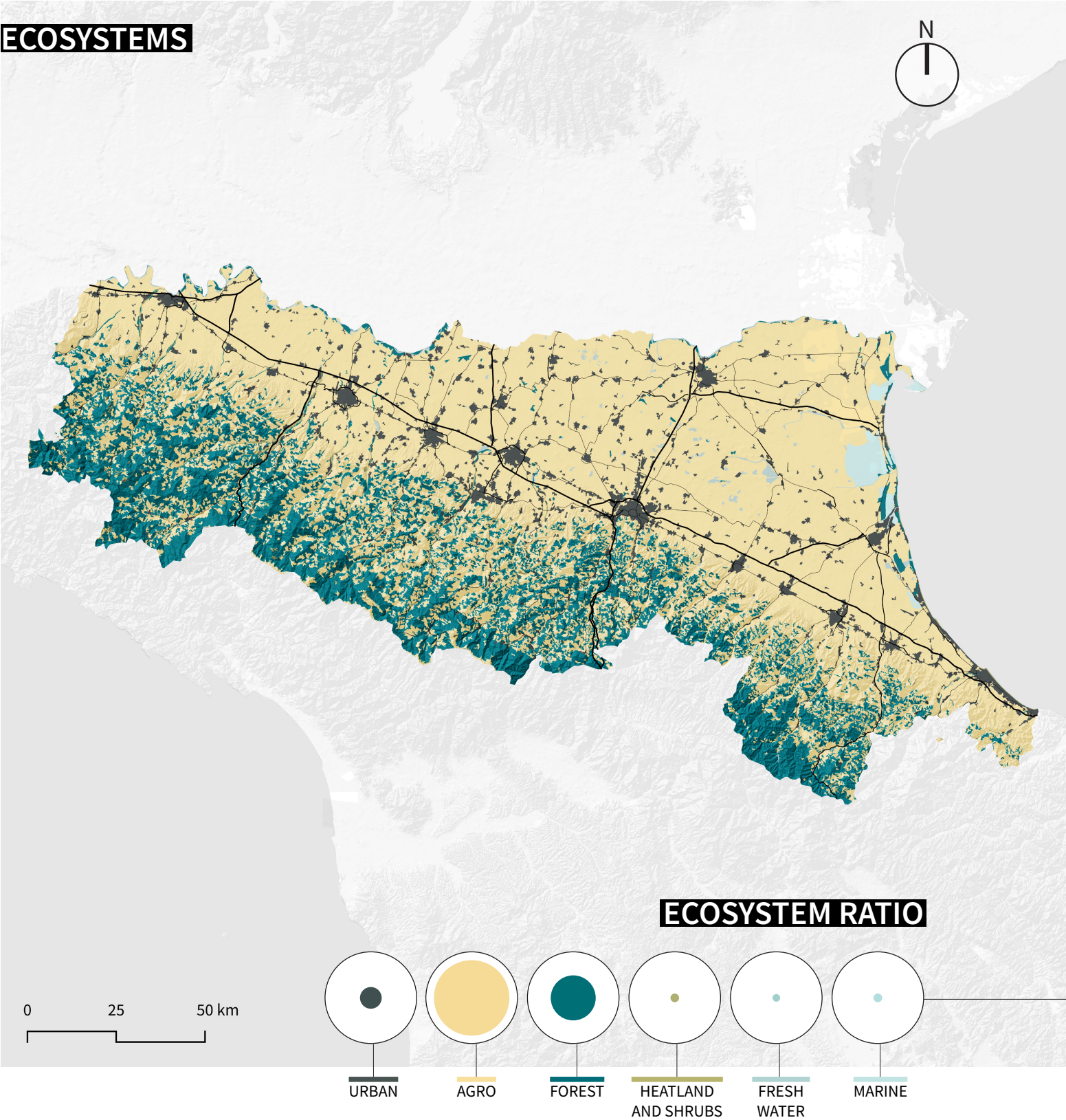


NATURA 2000 (%)

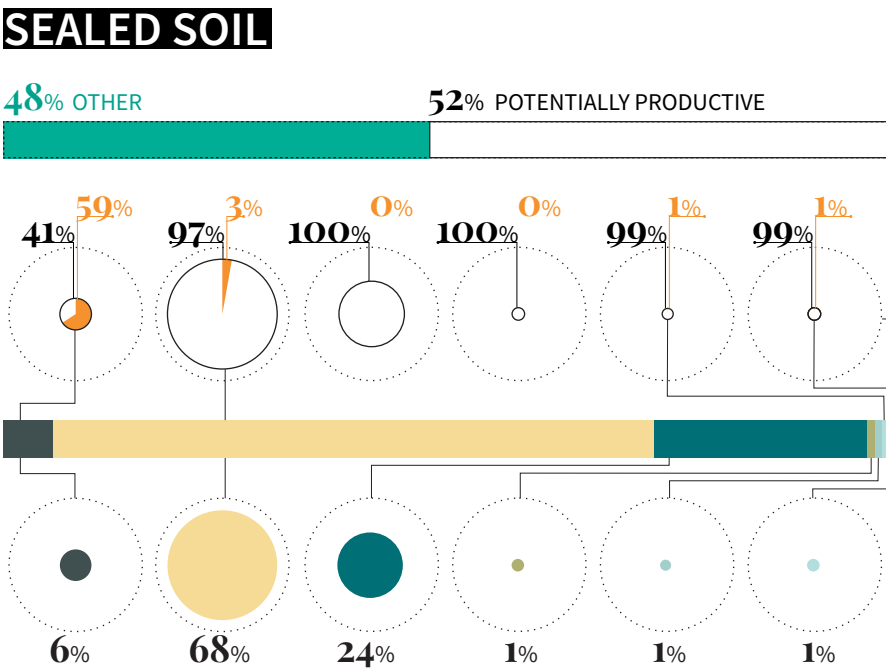
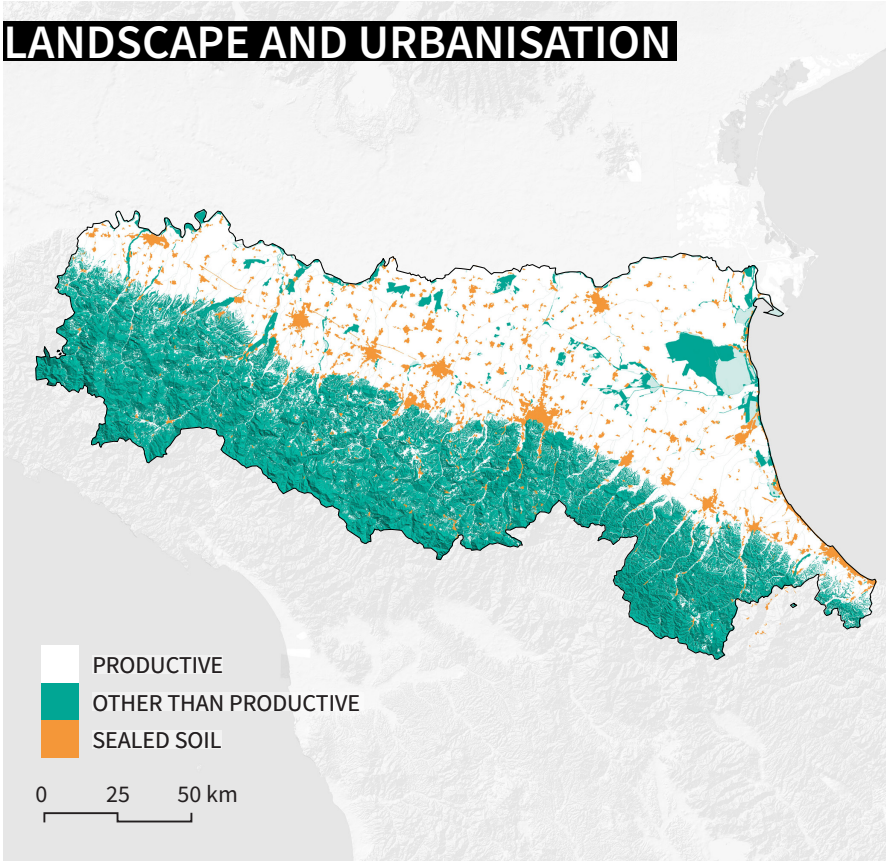
Subdivision by Bird and Habitat Directives on land surface.



Environment and climate

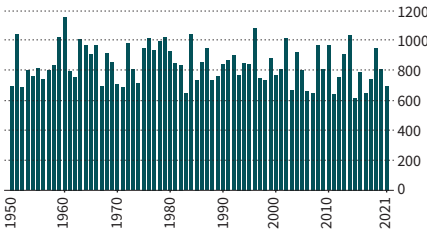


The aim of the LANDSCAPE AND URBANISATION map is to show the sealed soil, consumed by urbanisation (orange), in relation not only to the whole territory, but also to the *potentially most productive land*. The *potentially most productive land* is defined by exclusion of all spaces with slope higher than 10%, woods, protected areas, internal water bodies, rocky mountains or glaciers (in green color). In so doing, it proposes a view on how balanced/unbalanced is the relationship between built areas and the surrounding landscape.

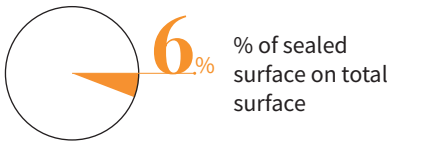
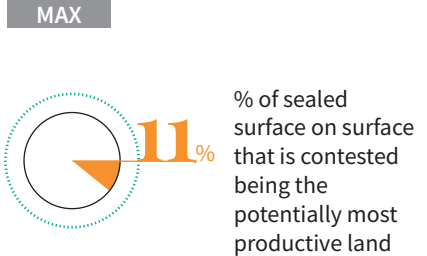
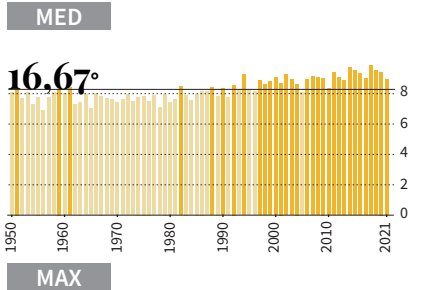
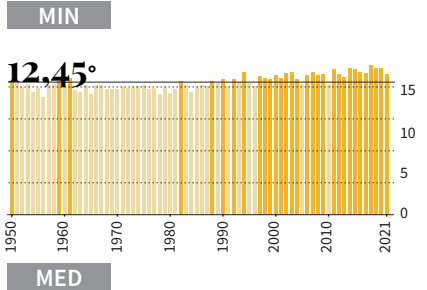
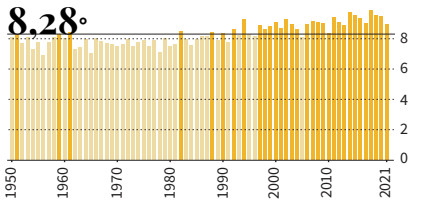


CLIMATE

PRECIPITATION [mm]



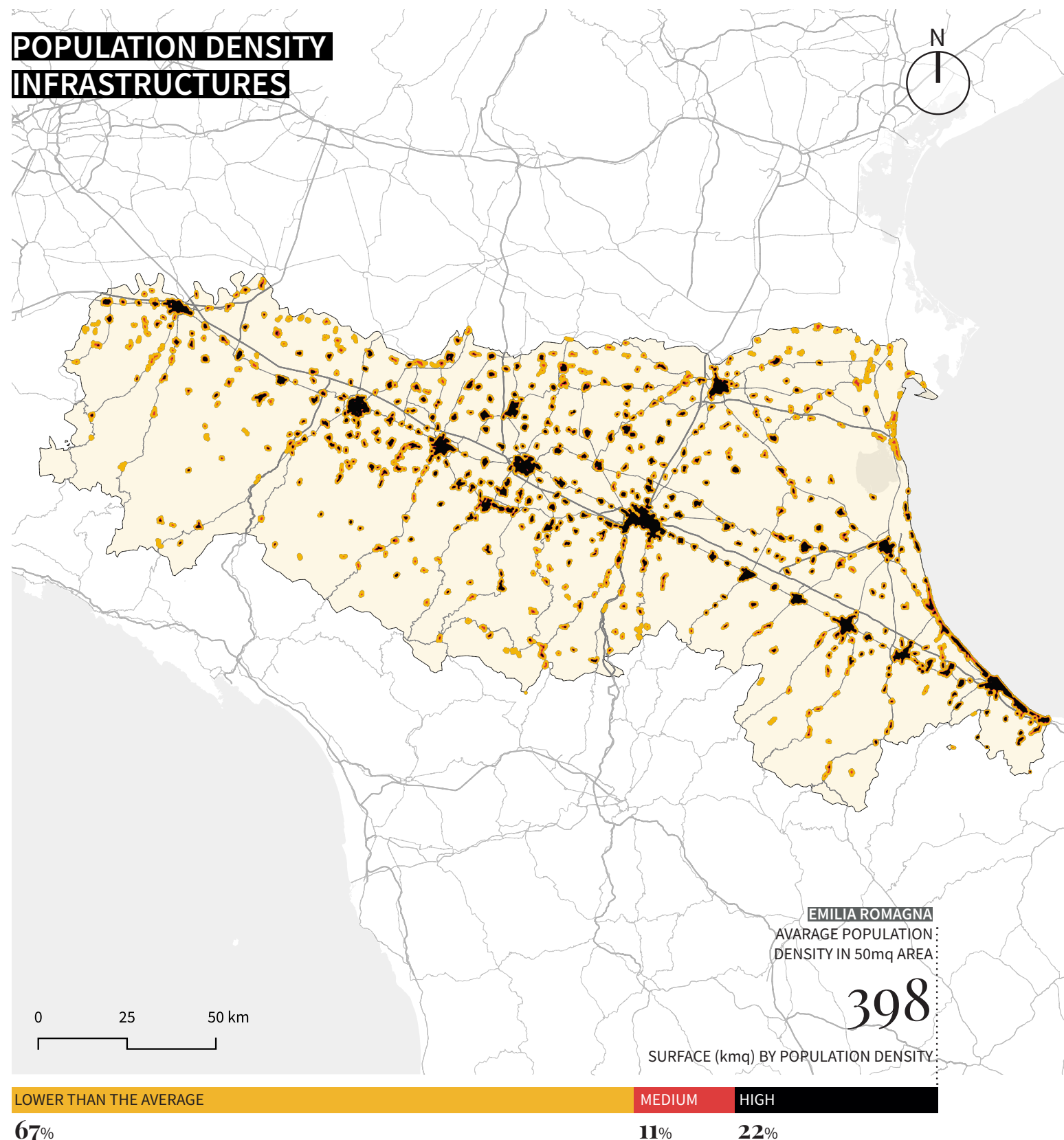
ANNUAL TEMPERATURE [C°]



ECOSYSTEMS

The presented ecosystem's classification was defined according to the "Mapping and Assessment of Ecosystem and their Services: an EU ecosystem assessment" edited by the European Union Joint Research Centre (JRC) in 2020.

Population density and distribution



POPULATION



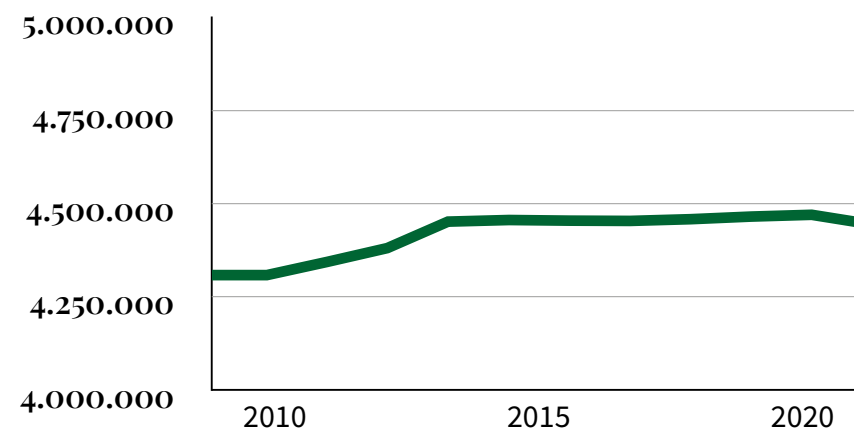
This is a thematic distorted map based on population data, (number of inhabitants per Local Administrative Unit in 2020 as provided by Eurostat). Within this anamorphic maps the Local Administrative Units (as geometric entities that should correspond, in size and shape, to their real world area) are instead distorted by attributing the maximum importance to the following variable: number of inhabitant. Therefore LAU's geographic size are altered proportionally to better visualize the distribution of the population variable: LAU's with an higher number of inhabitants become larger while the less populated ones shrink accordingly.

Socio-economic data



D2.4| Local diagnostic in Pilots territories | EMILIA-ROMAGNA

POPULATION TREND



POPULATION

4.438.937

AVERAGE FAMILY DIMENSION

2,2

LIFE EXPECTANCY* ITALY

82 years

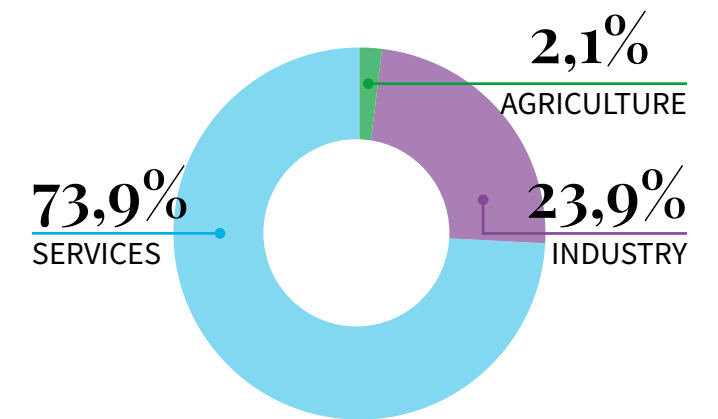
GDP TOTAL

149.000 million €

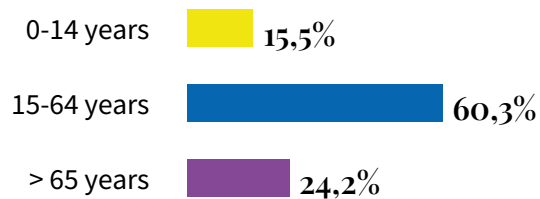
GDP PER CAPITA

33.600 €

GDP BY SECTOR*



AGE GROUPS %



ACTIVE AGEING INDEX* ITALY

It measures on a scale between 0 and 100 the level to which older people live independent lives, participate in paid employment and social activities, and their capacity to age actively.

33,8

GINI INDEX* ITALY

35,4

It represents the income inequality within a nation or a social group. It varies between 0 (perfect equality) and 1 (extreme inequality).

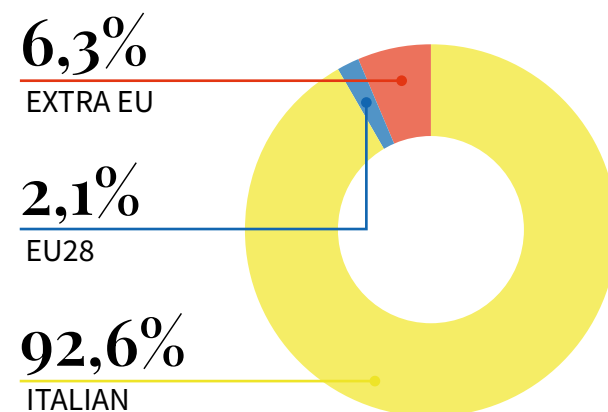
HUMAN DEVELOPMENT INDEX* ITALY

0,895

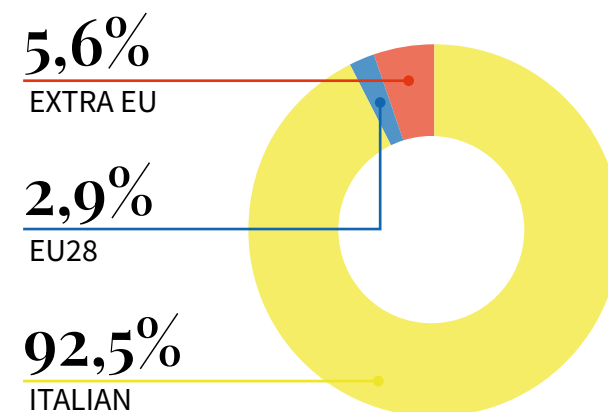
It is a summary measure of average achievement in key dimensions of human development: a long and healthy life, being knowledgeable and have a decent standard of living.

CITIZENSHIP* ITALY

MALES

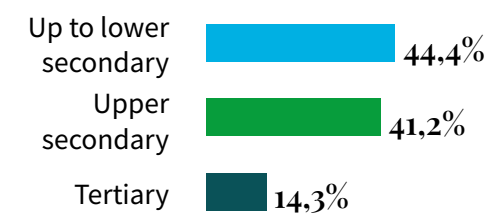


FEMALES

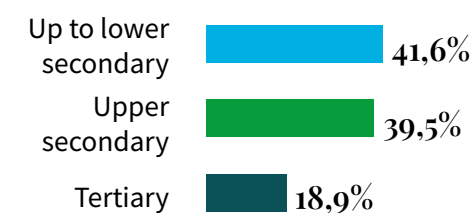


EDUCATION* ITALY

MALES

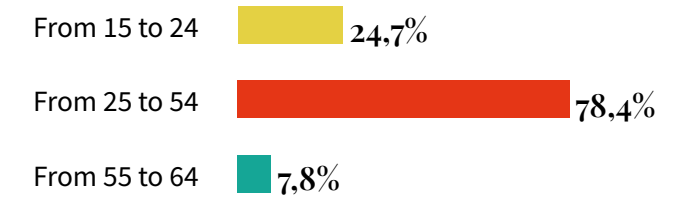


FEMALES

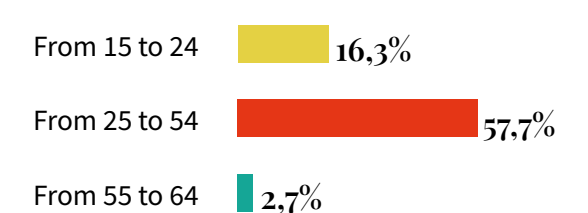


EMPLOYMENT BY AGE* ITALY

MALES



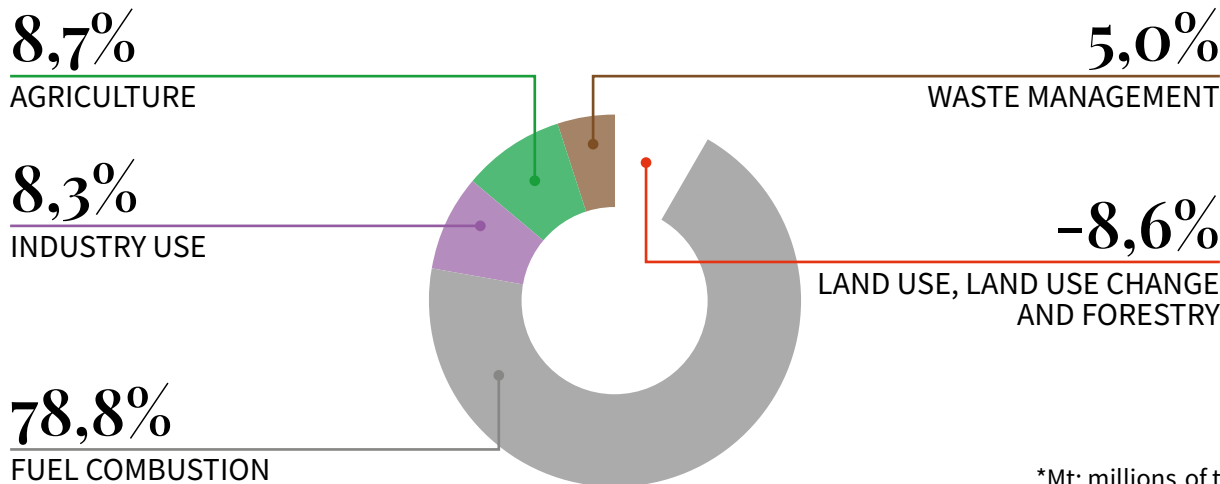
FEMALES



Emissions and energy data

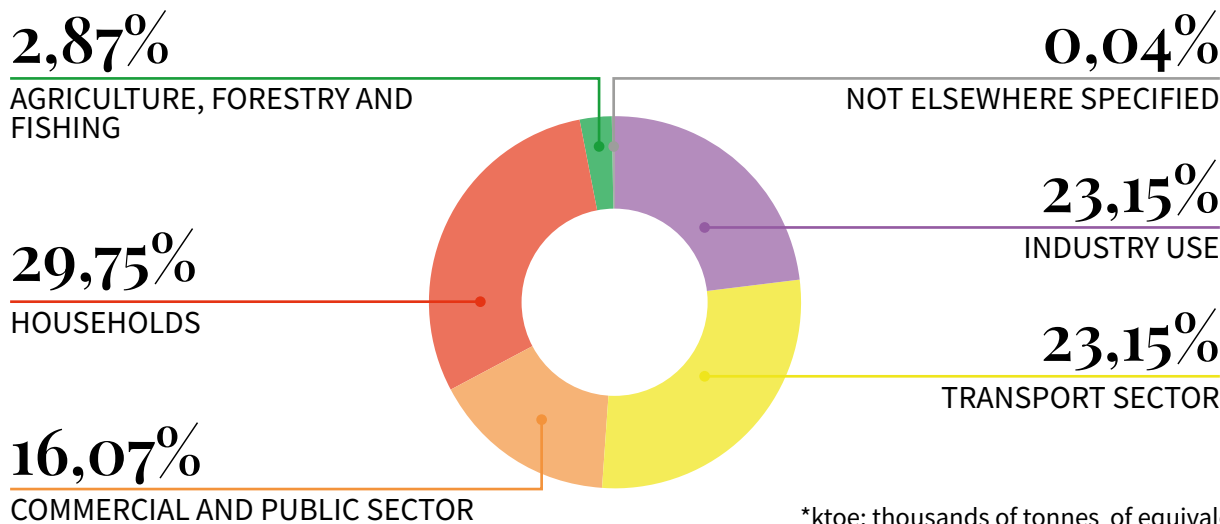
GREENHOUSE GAS EMISSIONS BY SOURCE SECTOR*^{ITALY}

tot: 352,7 Mt*

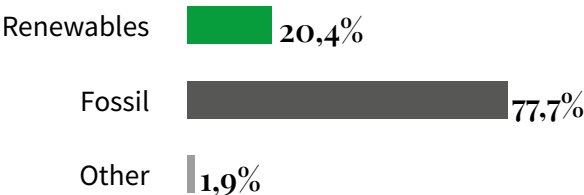


ENERGY CONSUMPTION BY SOURCE SECTOR*^{ITALY}

tot: 103.057 ktoe*



SHARE OF ENERGY BY SOURCES*^{ITALY}



SHARE OF RENEWABLE SOURCES*^{ITALY}

