

Supplementary Materials

# Imbibition and Germination of Seeds with Economic and Ecological Interest: Physical and Biochemical Factors Involved

Marcelo F. Pompelli \*, Alfredo Jarma-Orozco and Luis Alfonso Rodríguez-Páez

Center of Agronomy, University of Córdoba, Carrera 6 No. 77-305, Montería 230002, Córdoba, Colombia

\* Correspondence: marcelo@fca.edu.co

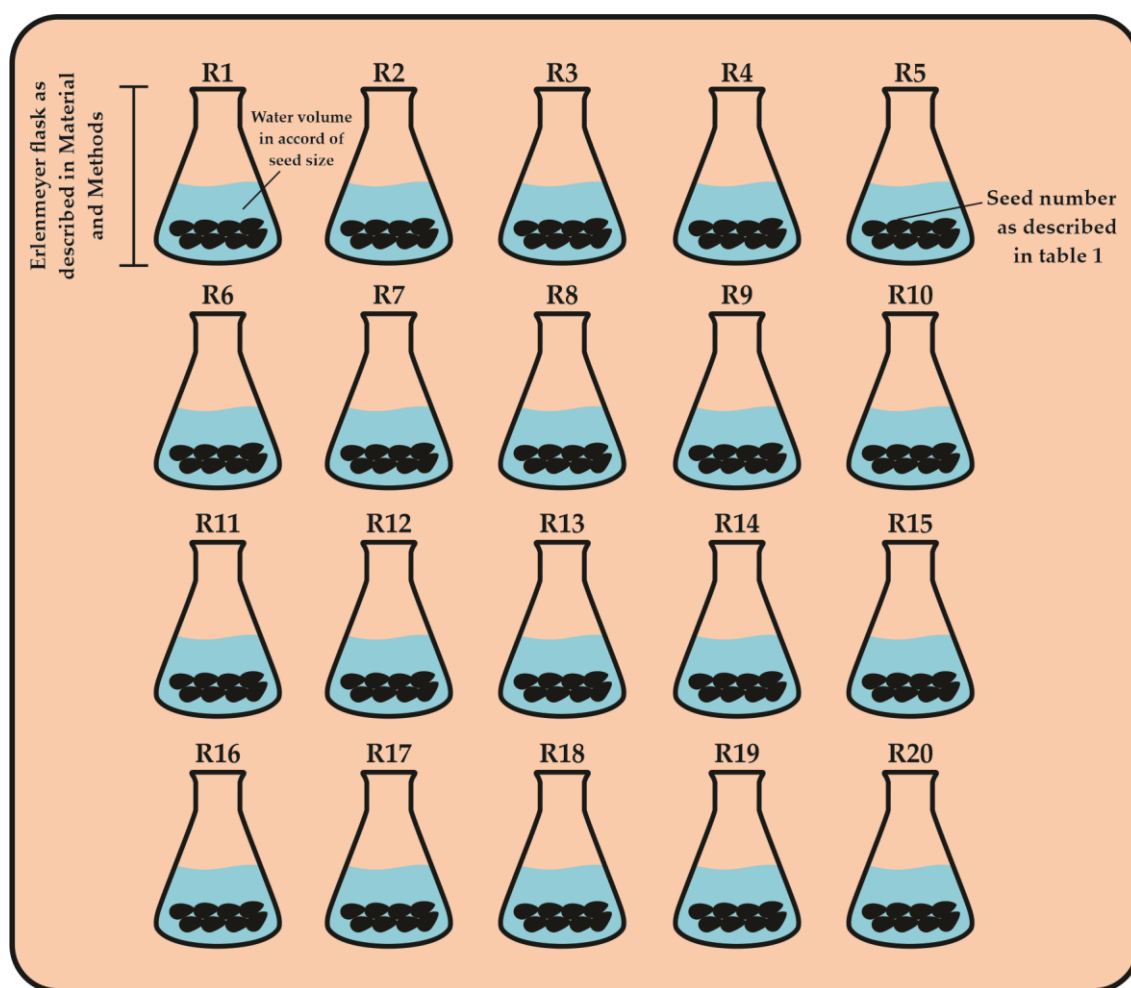
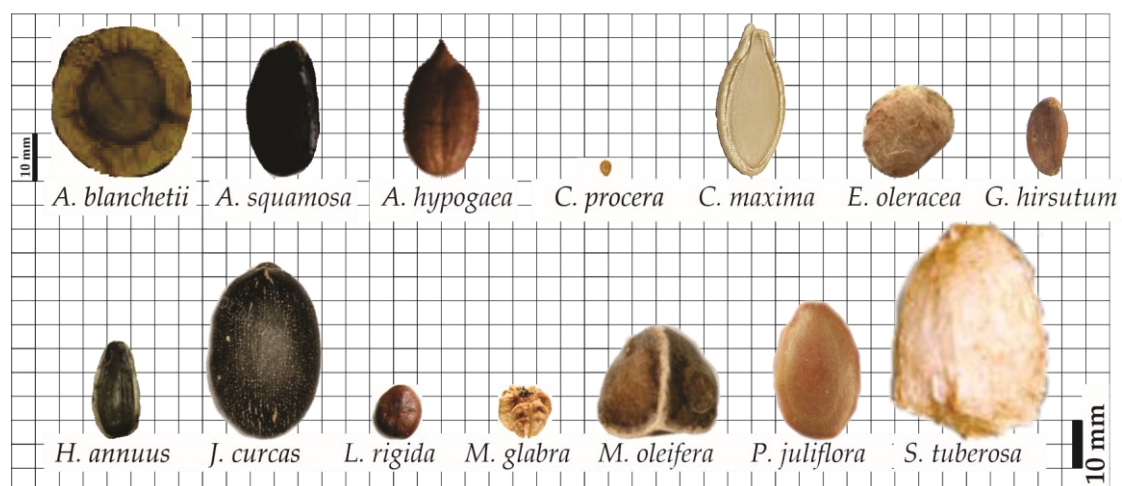


Figure S1. Experimental draw containing 20 true repetition.



**Figure S2.** Original photos of all studied species.

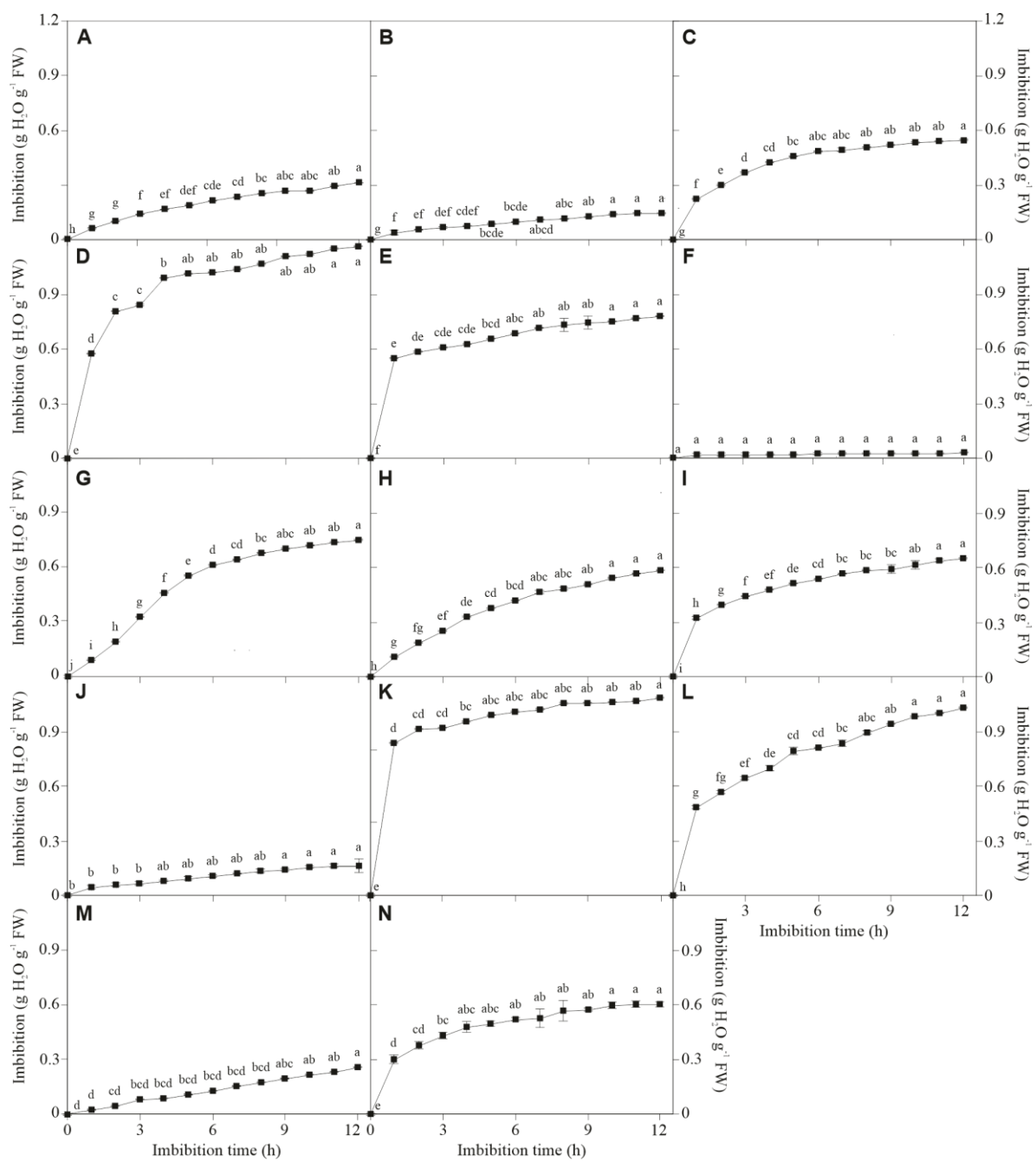


Figure S3. Imbibition curves of the first 12 h.

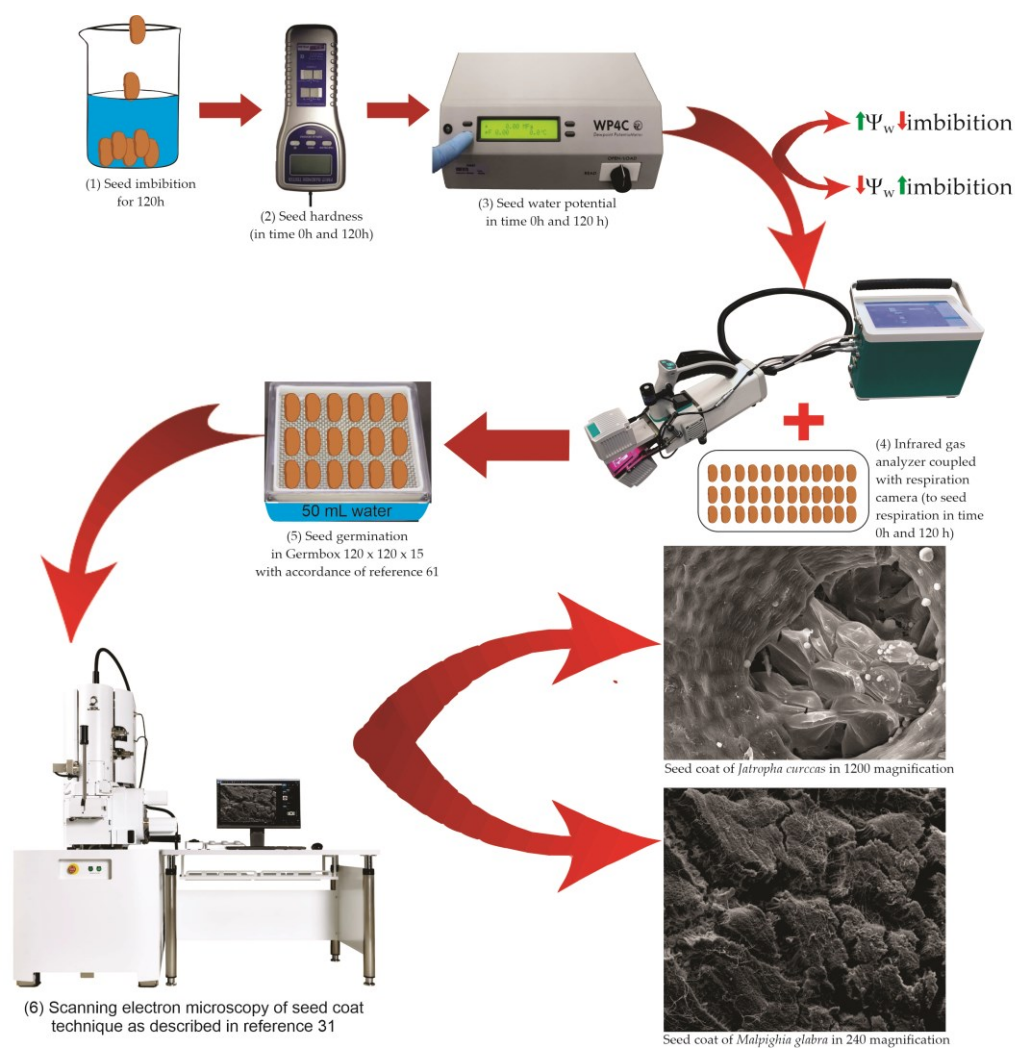


Figure S4. Methodology drawn aiming to make the methodology more simplified.

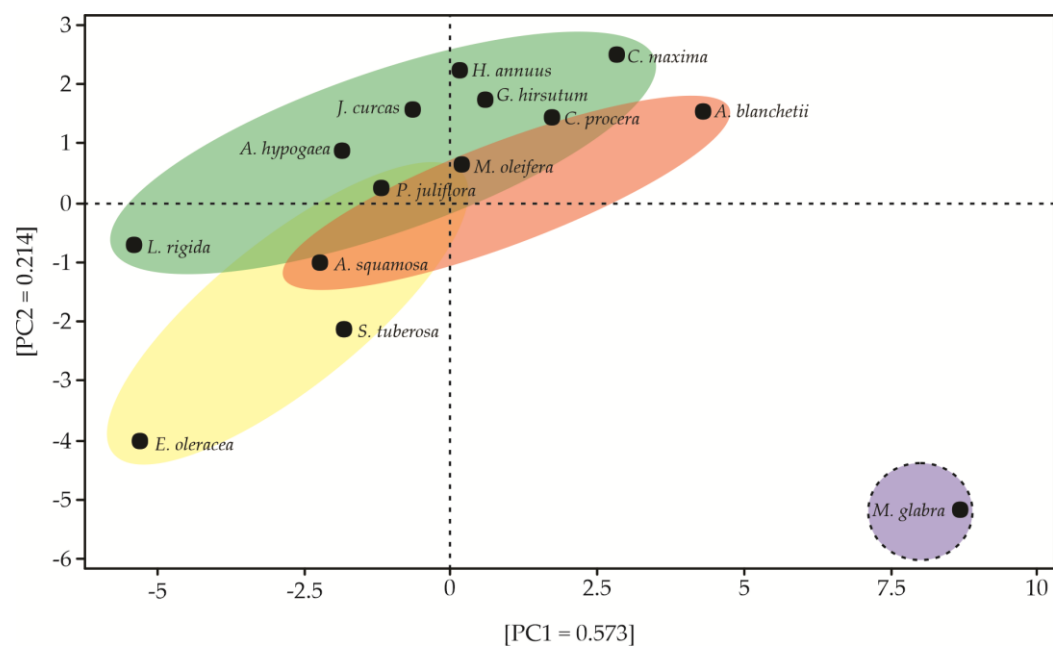


Figure S5. Principal component analysis showing the cluster formations.