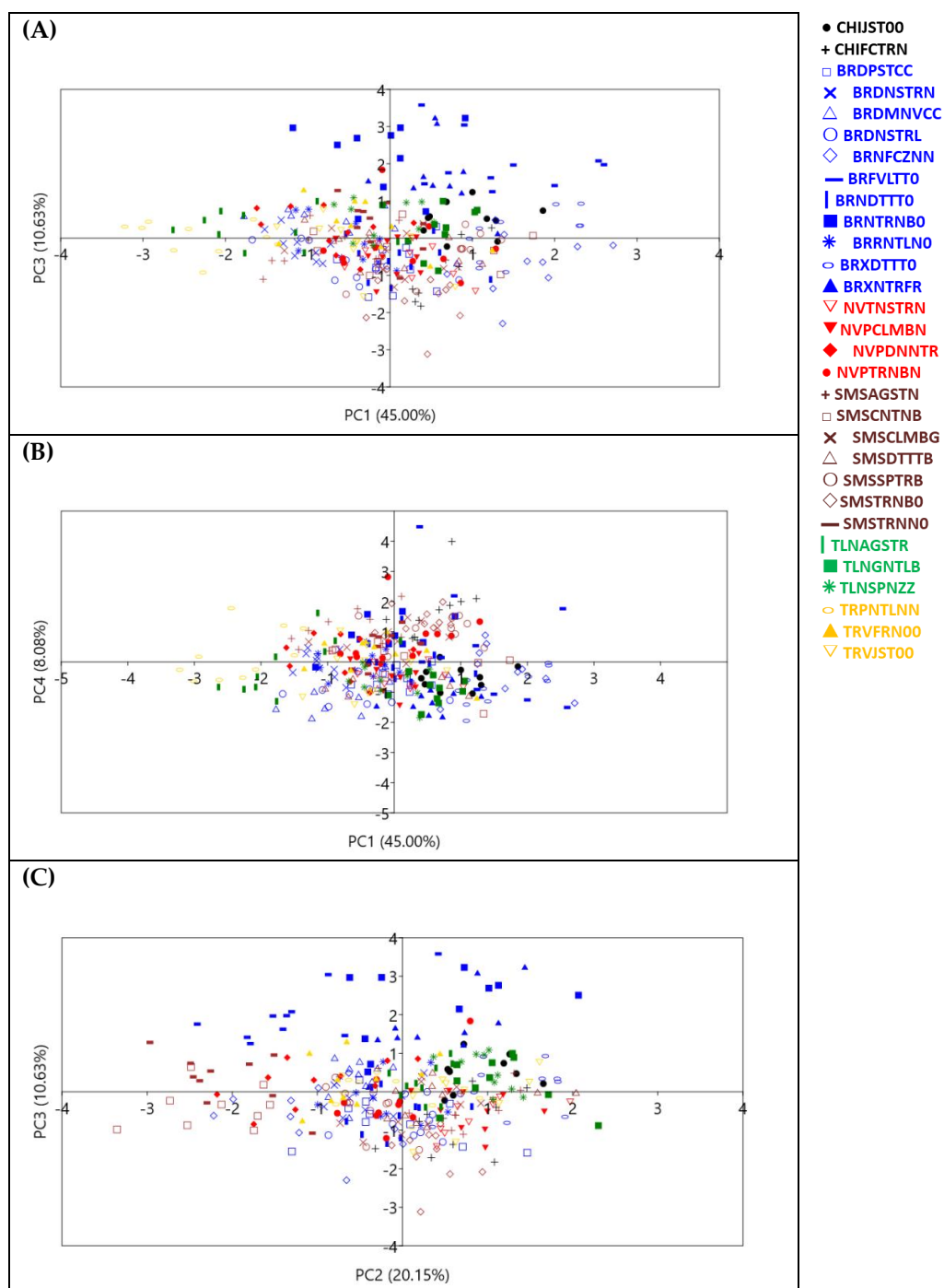
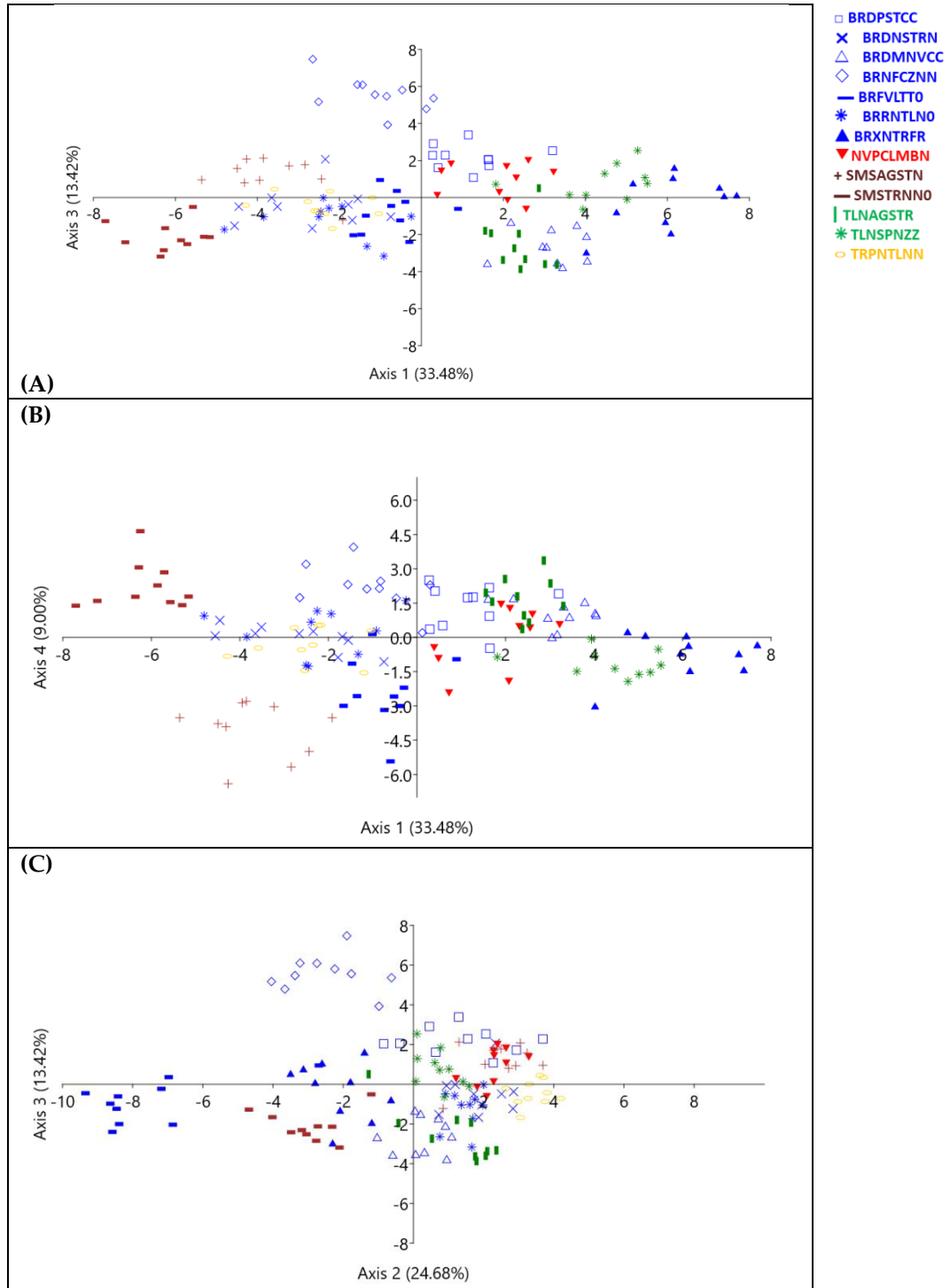


**Table S1. Site, accession name and geographical origin of the genotype under investigation.**

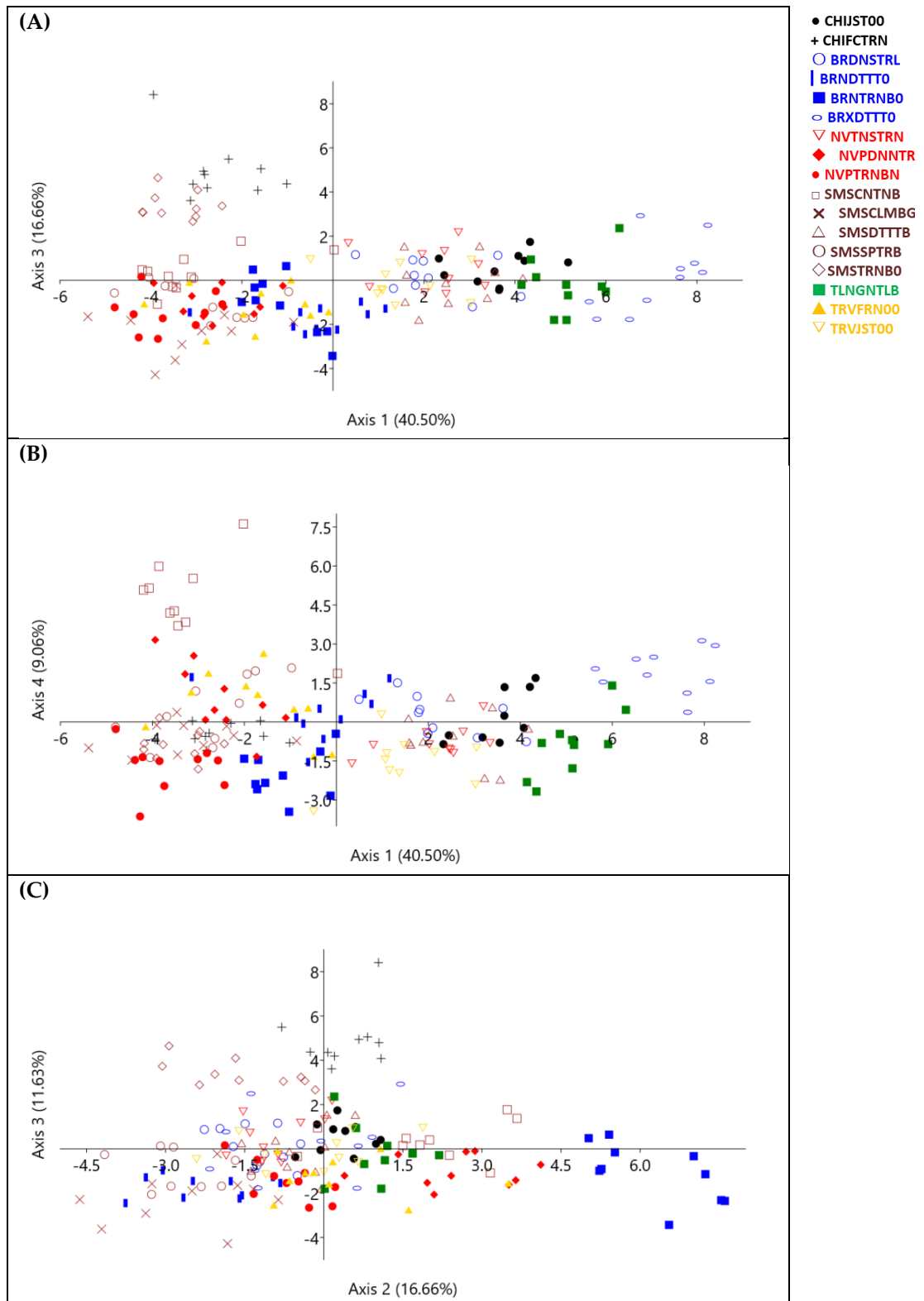
Site	Accession name	Latitude (°)	Longitude (°)	Elevation (m a.s.l.)
Bernalda	Fica de Pistizz	40°25'71.4''	16°41'43.3''	139
	Nostrale nera	40°25'74.2''	16°41'44.5''	141
	Menna vacca	40°25'72.2''	16°41'43.8''	142
	Nostrale bianca	40°25'73.0''	16°41'44.0''	147
	Ficazzana	40°25'31.0''	16°41'96.5''	132
	Violetto	40°24'54.53''	16°40'49.73''	140
	Dottato	40°25'13.77''	16°41'57.33''	126
	Troiana bianca	40°25'15.04''	16°41'55.33''	126
	Natalino	40°25'13.77''	16°41'57.33''	126
	Dottato	40°05'40.19''	16°14'50.41''	54
	Ente Riforma	40°05'40.25''	16°14'51.15''	54
Chiaromonte	Justa	40°05'40.19''	16°14'50.41''	395
	Troiano bianco	40°05'40.25''	16°14'51.15''	392
Nova Siri	Nostrana	40°07'49.10''	16°32'48.41''	204
	Donna Teresa	40°07'56.48''	16°33'01.91''	150
	Columbraro nero	40°08'00.81''	16°33'21.86''	134
	Troiana	40°07'59.70''	16°33'26.49''	129
San Mauro Forte	Agostiniano Nero	40°28'22.23''	16°16'00.06''	430
	Canitano bianco	40°28'22.72''	16°15'59.75''	432
	Dottato bianco	40°28'22.67''	16°16'2.02''	425
	Columbro bianco gentile	40°28'23.15''	16°16'00.69''	430
	San Pietro bianco	40°28'30.61''	16°15'44.45''	471
	Troiano bianco	40°28'32.28''	16°15'44.03''	467
	Troiano nero	40°28'31.77''	16°15'44.03''	465
Tolve	Spinazzolese	40°41'.42.7''	16°00'88.8''	498
	Gentile	40°41'.40.7''	16°00'84.9''	488
	Agostarico	40°41'.40.0''	16°00'85.4''	486
Tursi	Justa	40°15'18.78''	16°29'00.45''	256
	Natalino	40°14'02.89''	16°30'34.71''	92
	Faraona	40°15'19.78''	16°28'58.25''	253



**Figure S1.** Principal components scores of 300 leaves of *Ficus carica* L. accessions (A) PC1 versus PC3; (B) PC1 versus PC4; and (C) PC2 versus PC3.



**Figure S2.** Linear discriminant analysis, scores 130 leaves of *Ficus carica* L. of the accessions with dark skin fruit (A) PC1 versus PC3; (B) PC1 versus PC4; and (C) PC2 versus PC3.



**Figure S3.** Linear discriminant analysis, scores 170 leaves of *Ficus carica* L. of the accessions with green skin fruit. (A) Ax1 versus Ax3; (B) Ax1 versus Ax4, and (C) Ax2 versus Ax3.