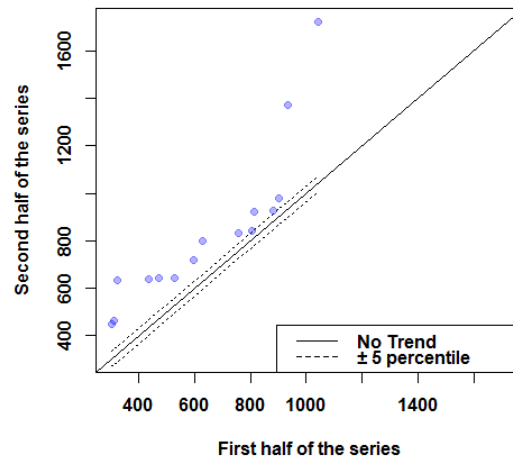
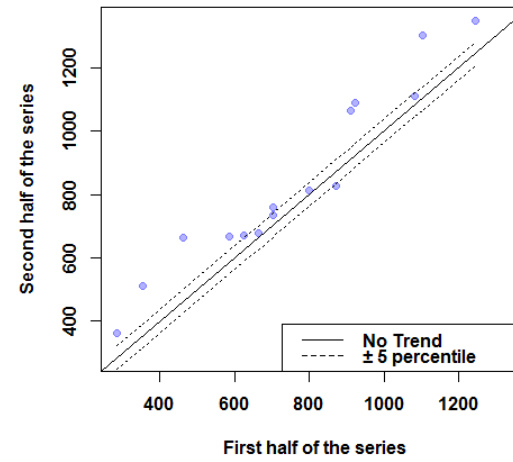


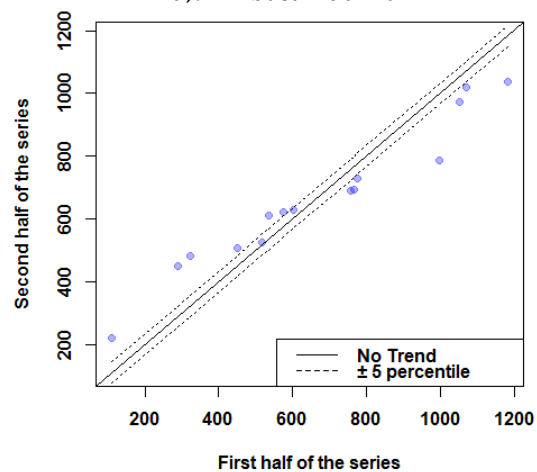
a). Ambasamuthiram



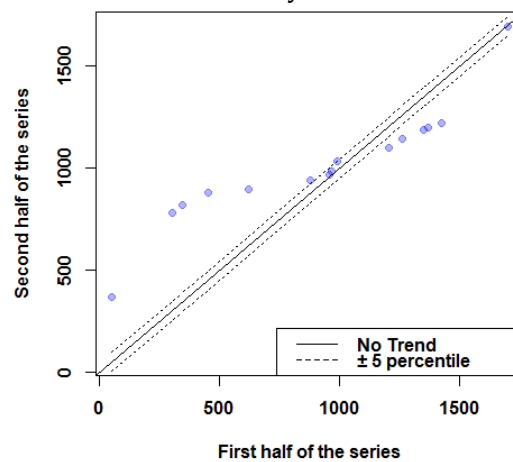
b). Ayikudi



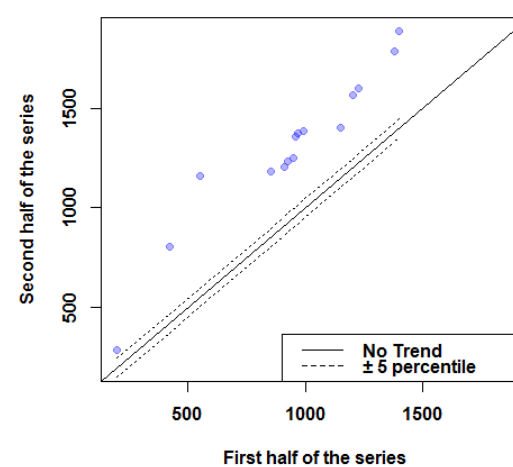
c). Cheranmahadevi



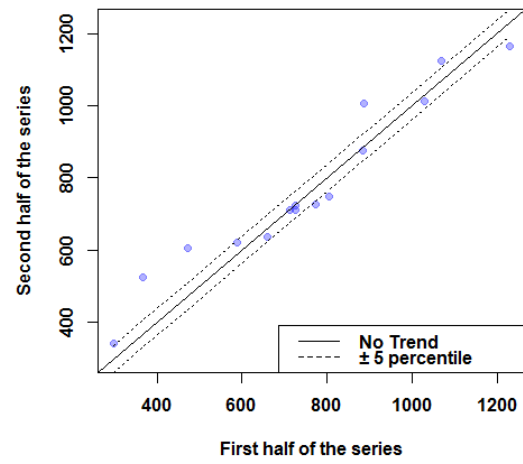
d). Kalakadu



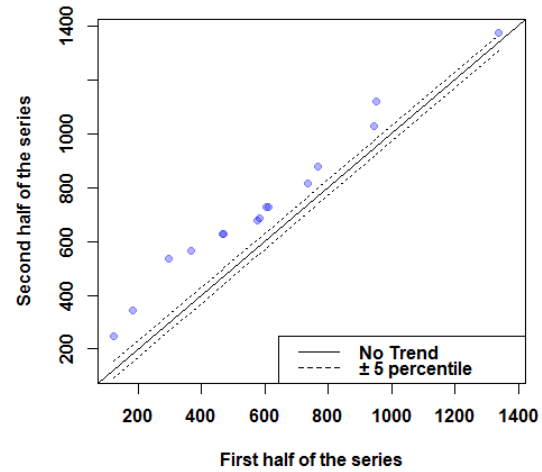
e). Kalugumalai



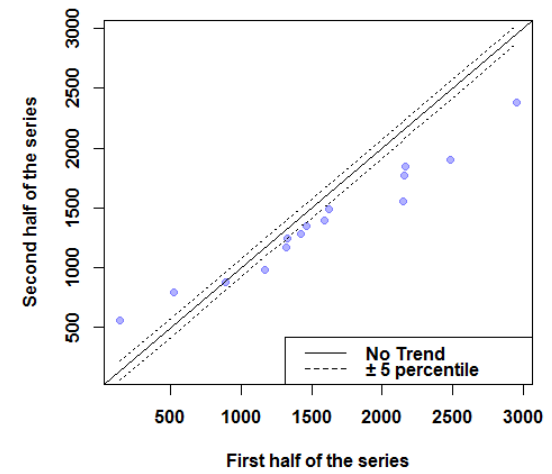
f). Manimuthar



g). Palayamkottai

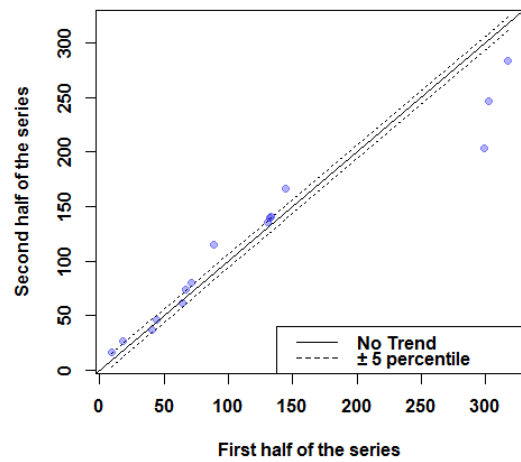


h). Sankarankovil

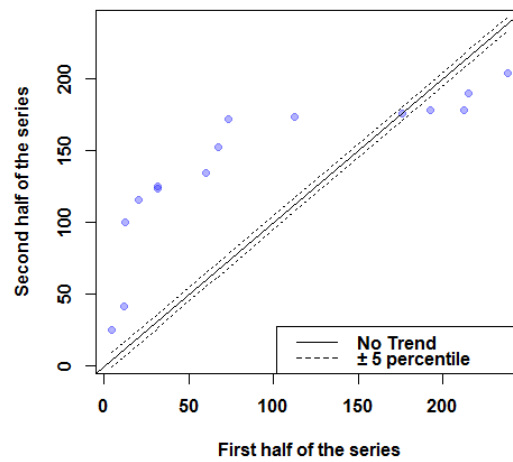


i). Shengottai

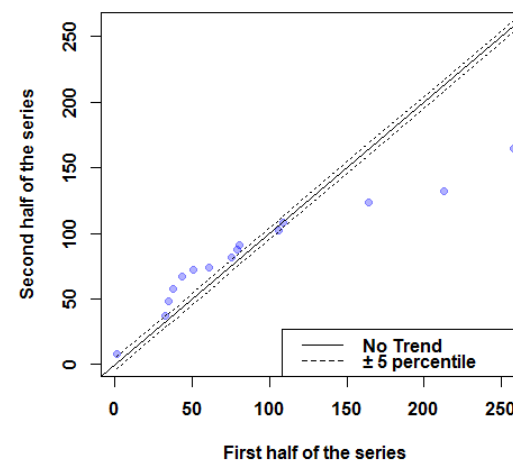
**Figure S1.** Annual rainfall trend by ITA method in all stations.



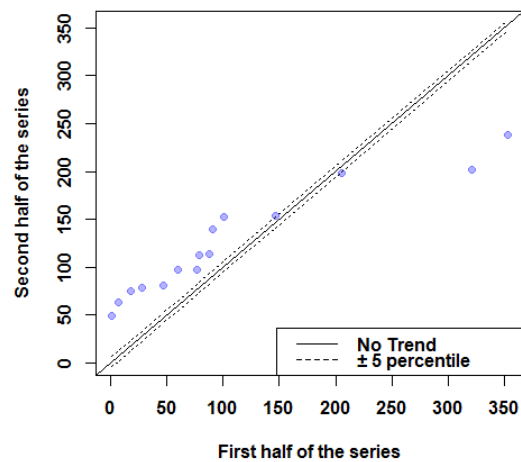
a). Ambasamuthiram



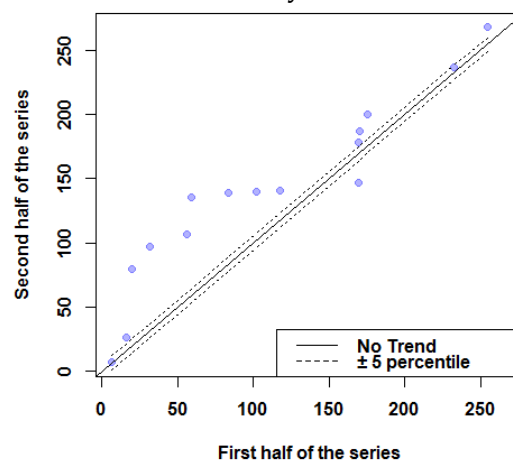
b). Ayikudi



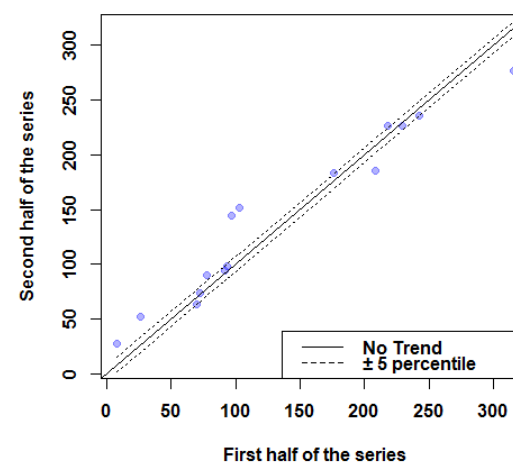
c). Cheranmahadevi



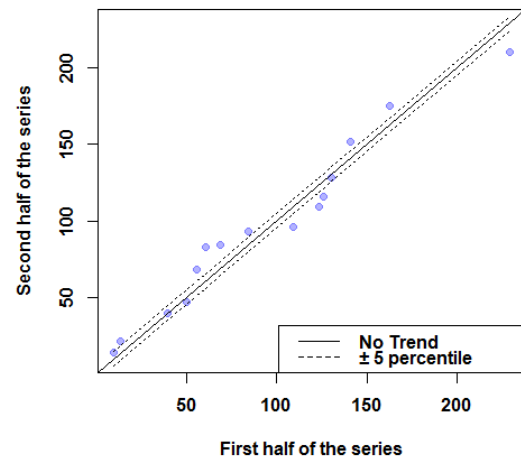
d). Kalakadu



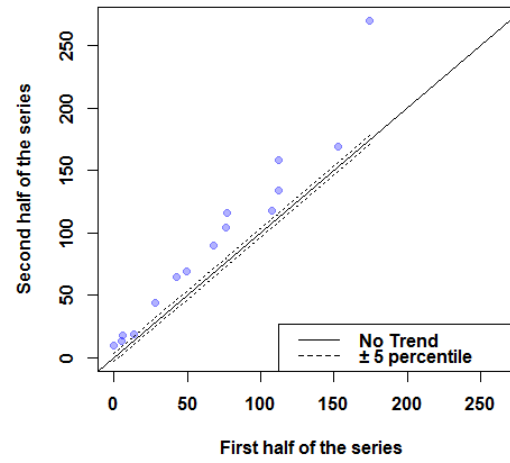
e). Kalugumalai



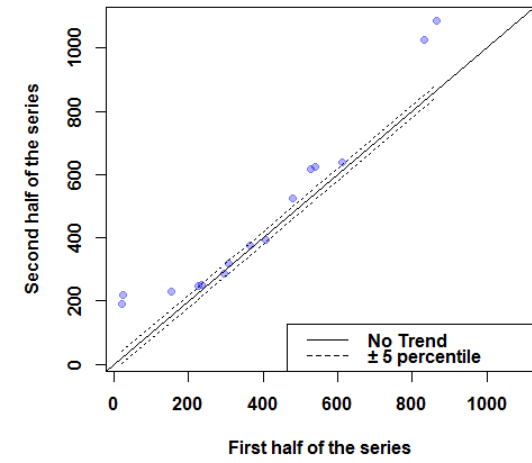
f). Manimuthar



g). Palayamkottai

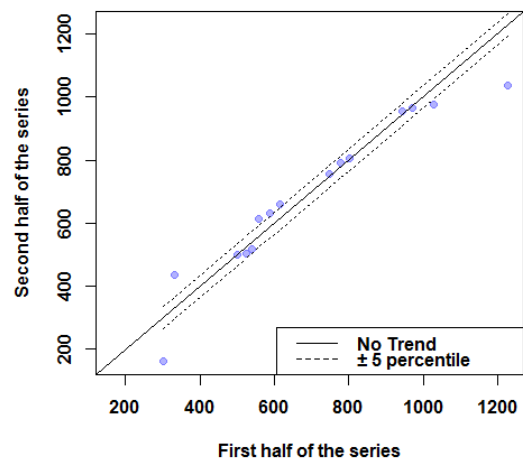


h). Sankarankovil

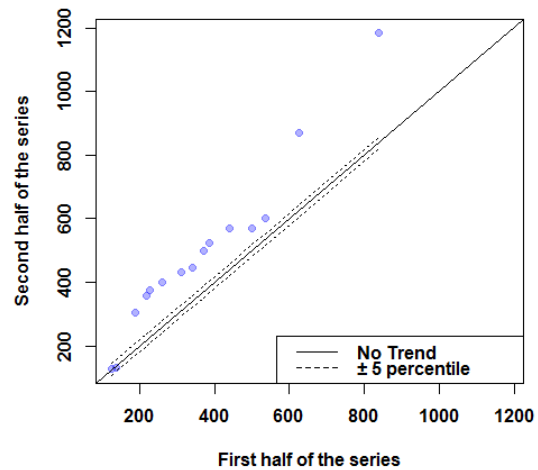


i). Shengottai

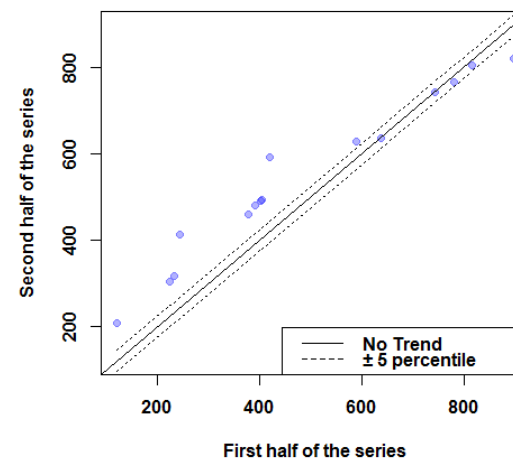
Figure S2. ITA trend during SWM season in all stations



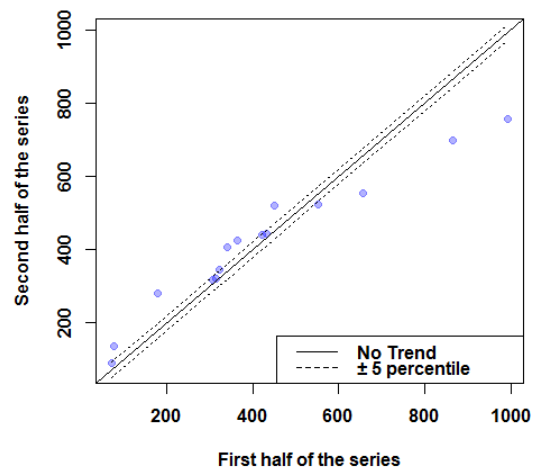
a). Ambasamuthiram



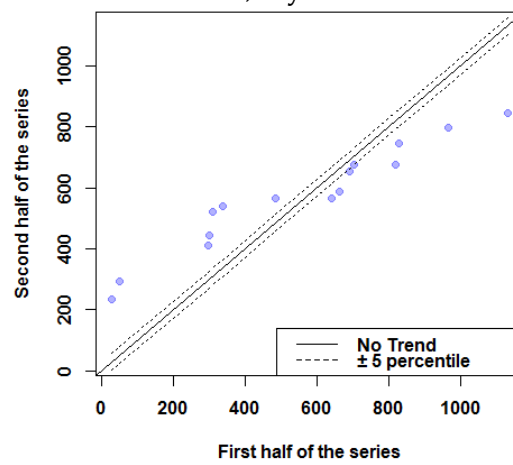
b). Ayikudi



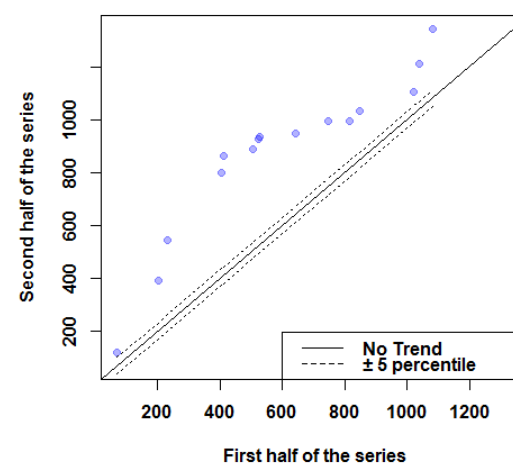
c). Cheranmahadevi



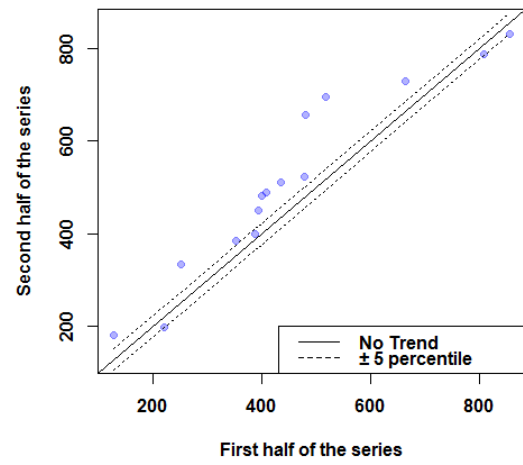
d). Kalakadu



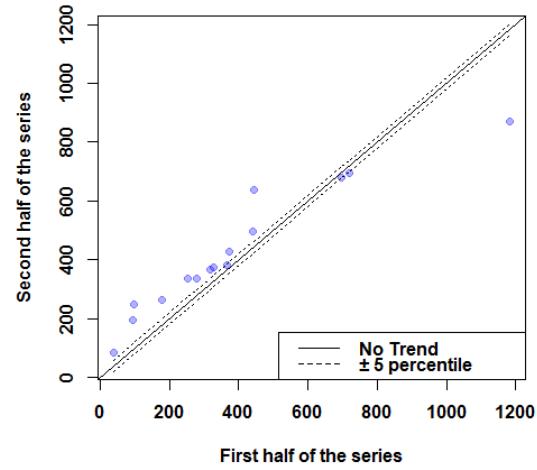
e). Kalugumalai



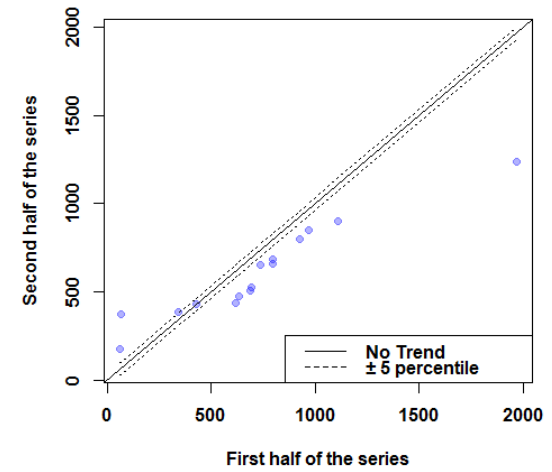
f). Manimuthar



g). Palayamkottai

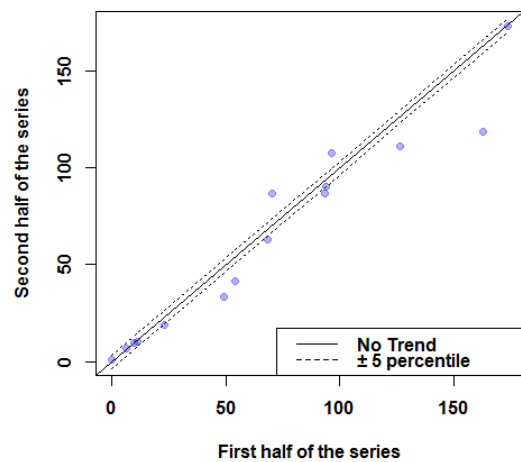


h). Sankarankovil

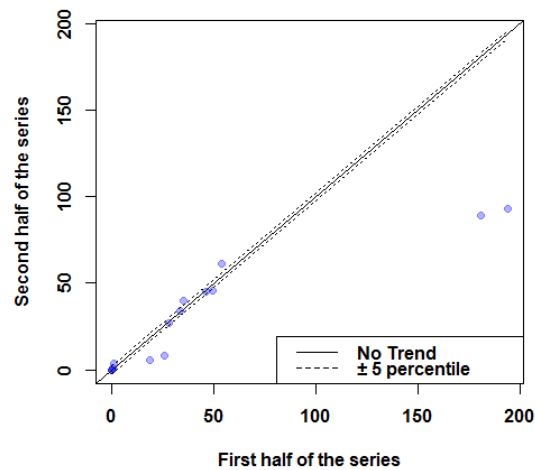


i). Shengottai

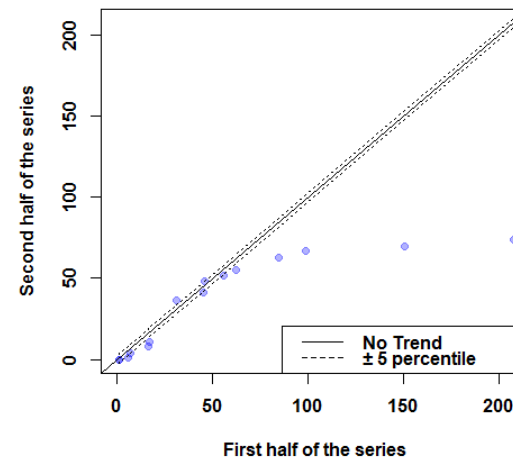
Figure S3. ITA trend during NEM season in all stations



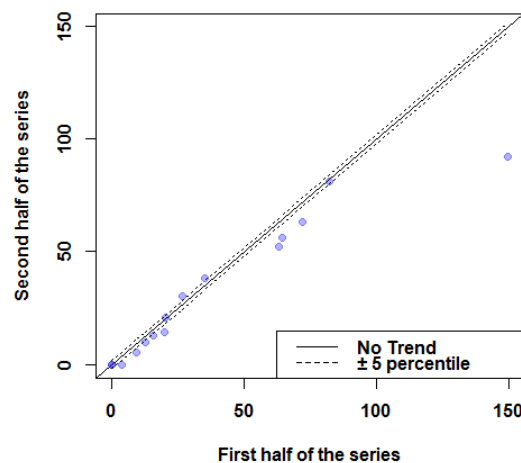
a). Ambasamuthiram



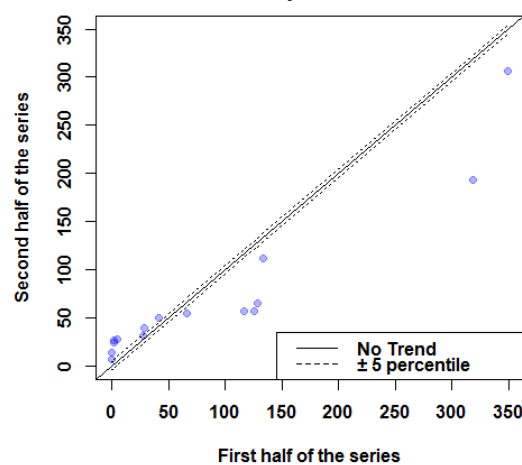
b). Ayikudi



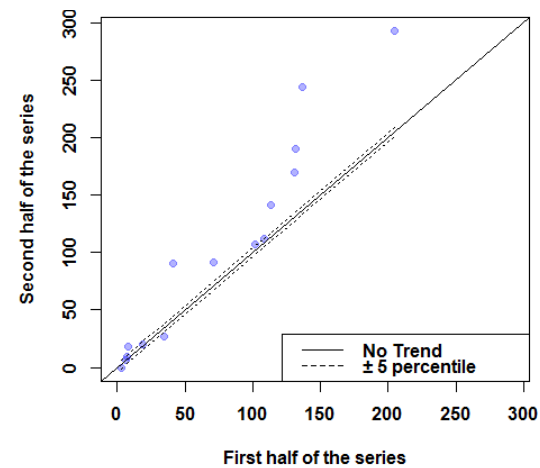
c). Cheranmahadevi



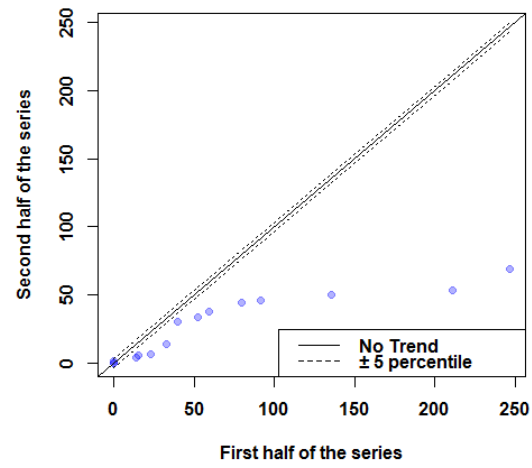
d). Kalakadu



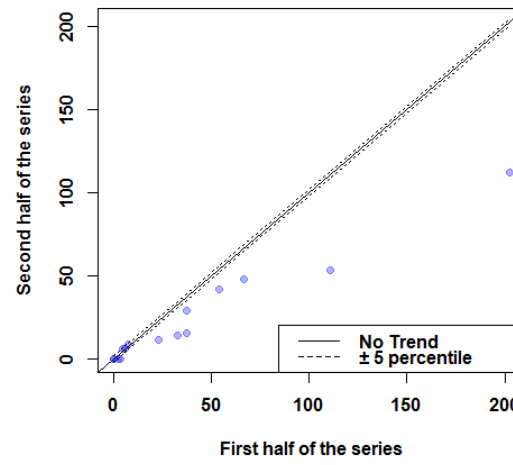
e). Kalugumalai



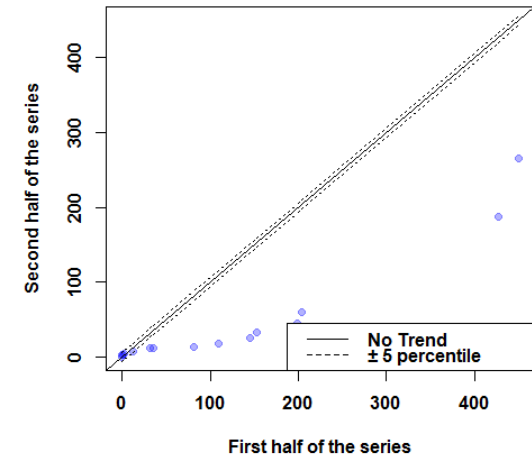
f). Manimuthar



g). Palayamkottai



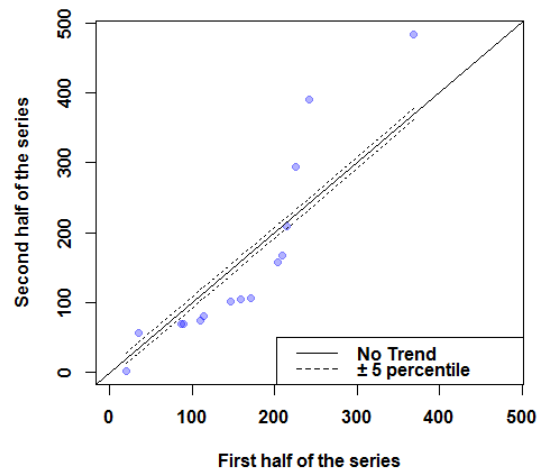
h). Sankarankovil



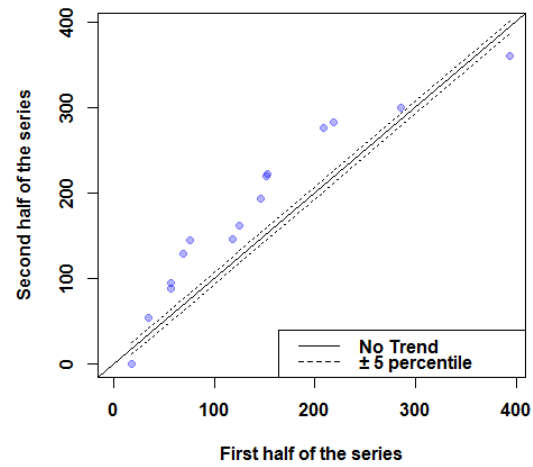
i). Shengottai

Figure S4. ITA trend during winter season in all stations

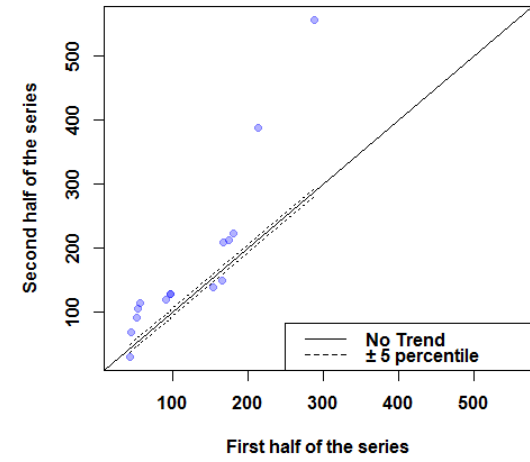




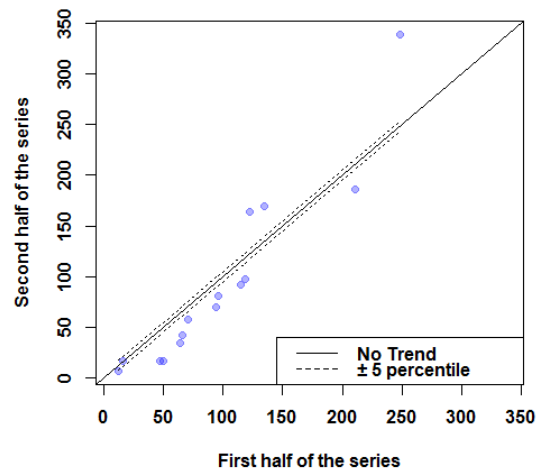
a). Ambasamuthiram



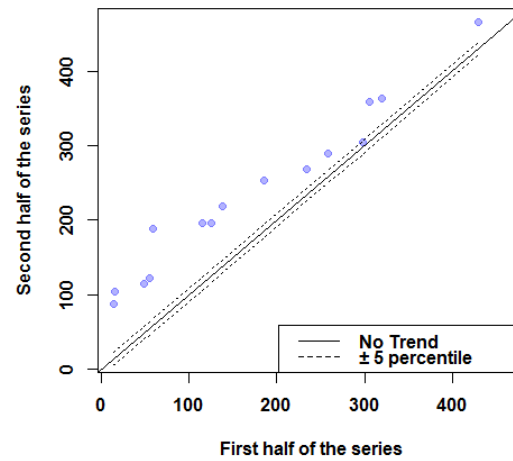
b). Ayikudi



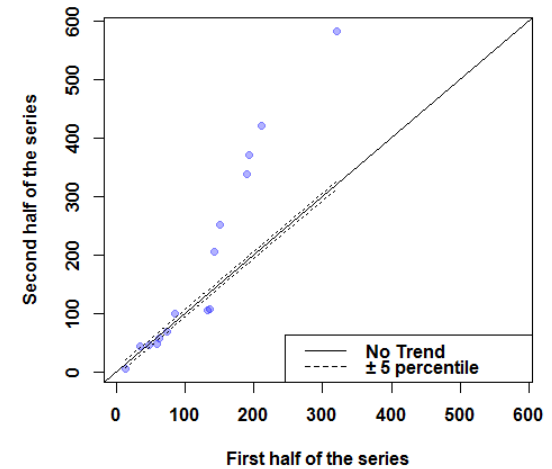
c). Cheranmahadevi



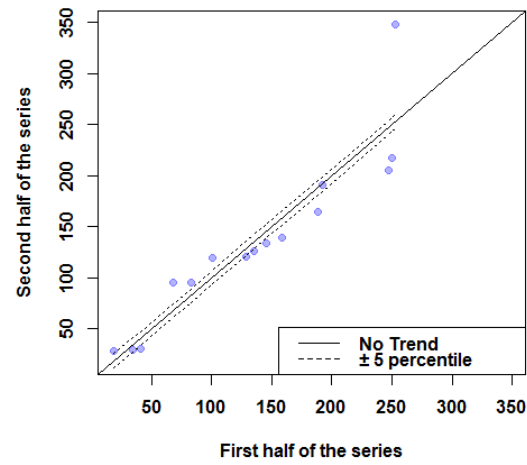
d). Kalakadu



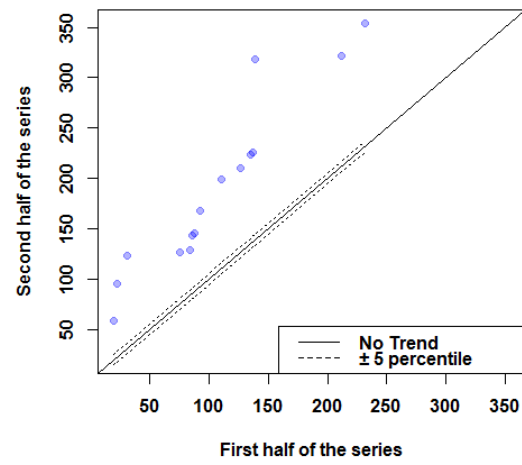
e). Kalugumalai



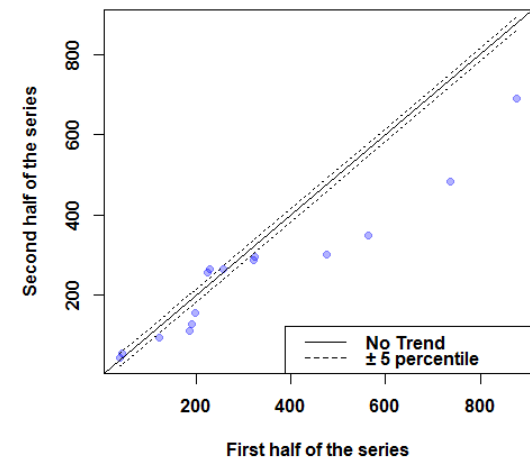
f). Manimuthar



g). Palayamkottai



h). Sankarankovil



i). Shengottai

Figure S5. ITA trend during summer season in all stations