

Multivariate optimization of chromatographic conditions for rapid simultaneous quantification of antidiarrheal drugs in formulation using surface response methodology

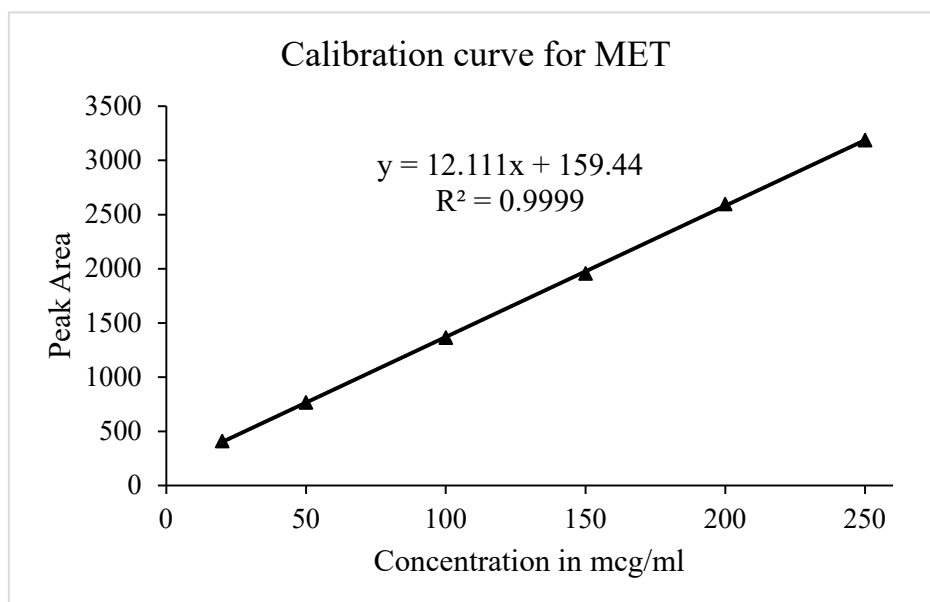


Figure S1: Calibration curve for metronidazole

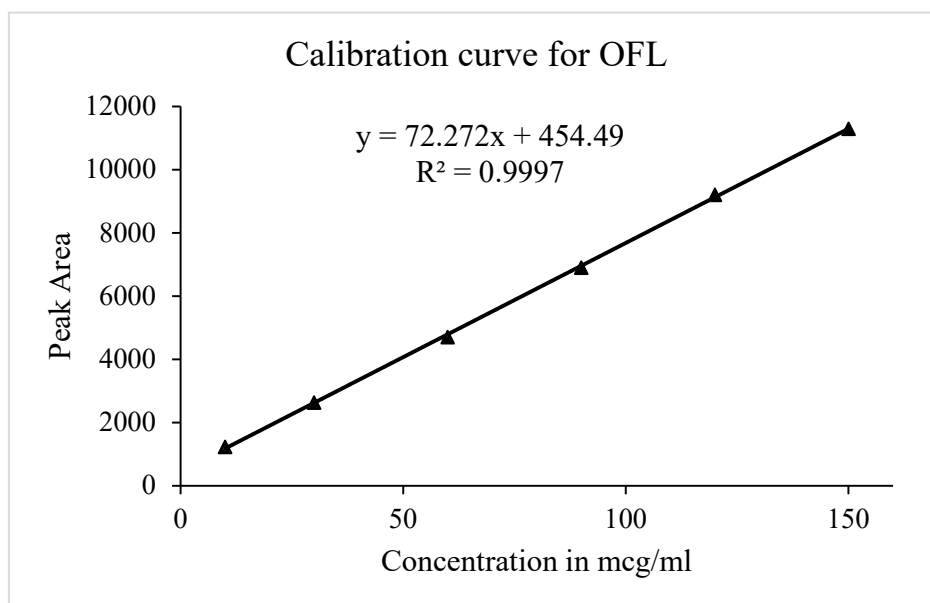


Figure S2: Calibration curve for ofloxacin

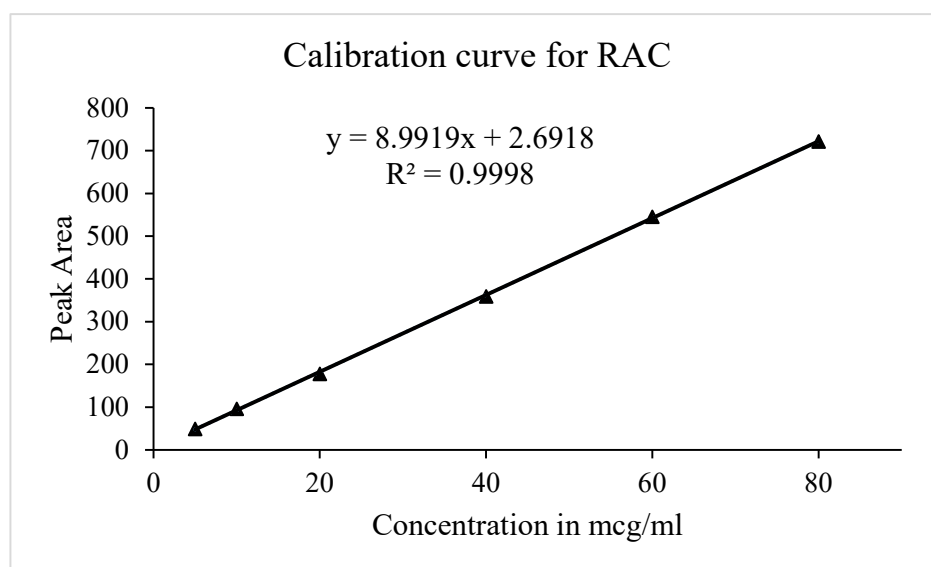


Figure S3: Calibration curve for racecadotril

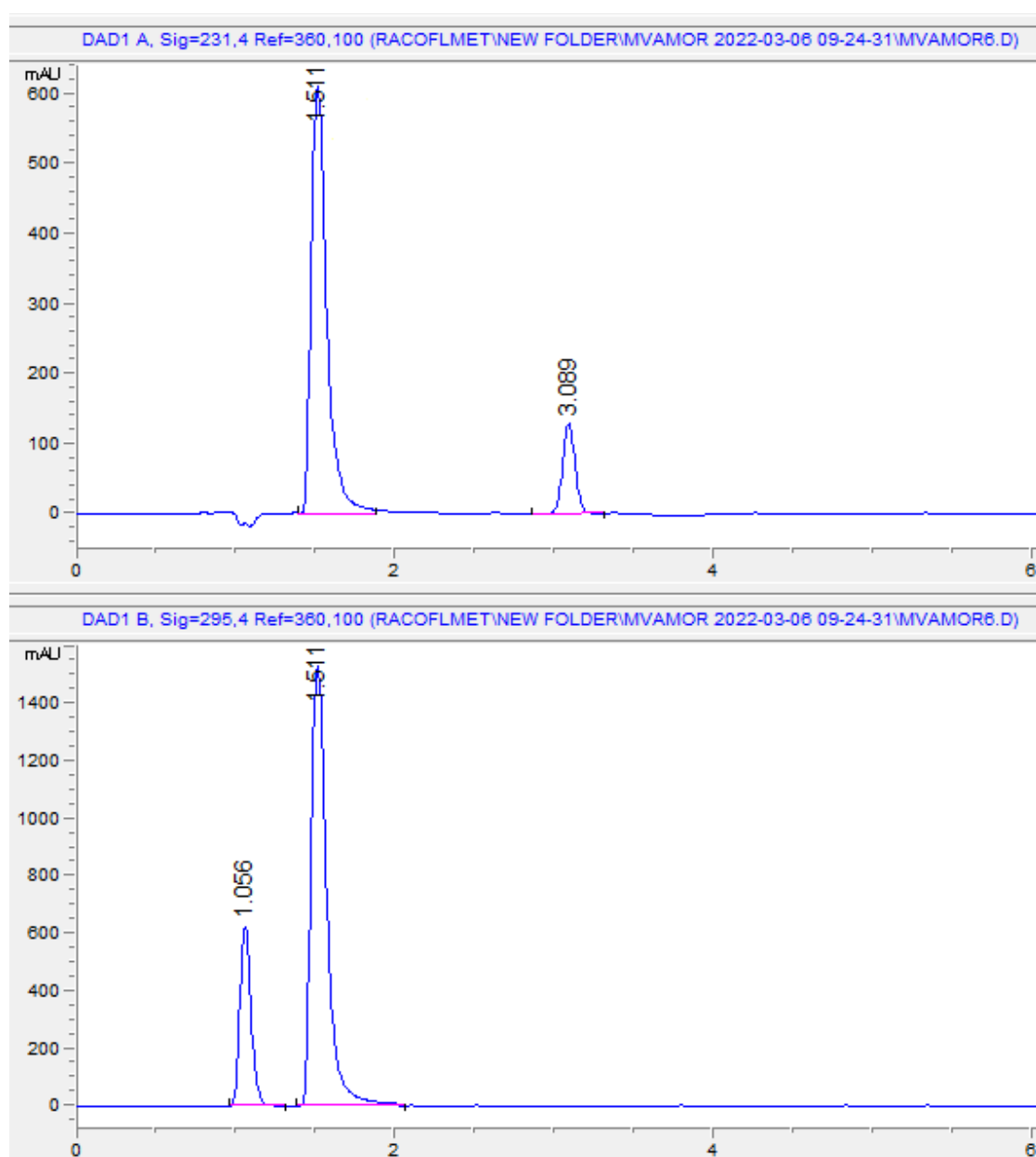


Figure S4: Chromatogram of standard solutions of MET(1.056 min), OFL (1.511 min) and RAC (3.089 min)

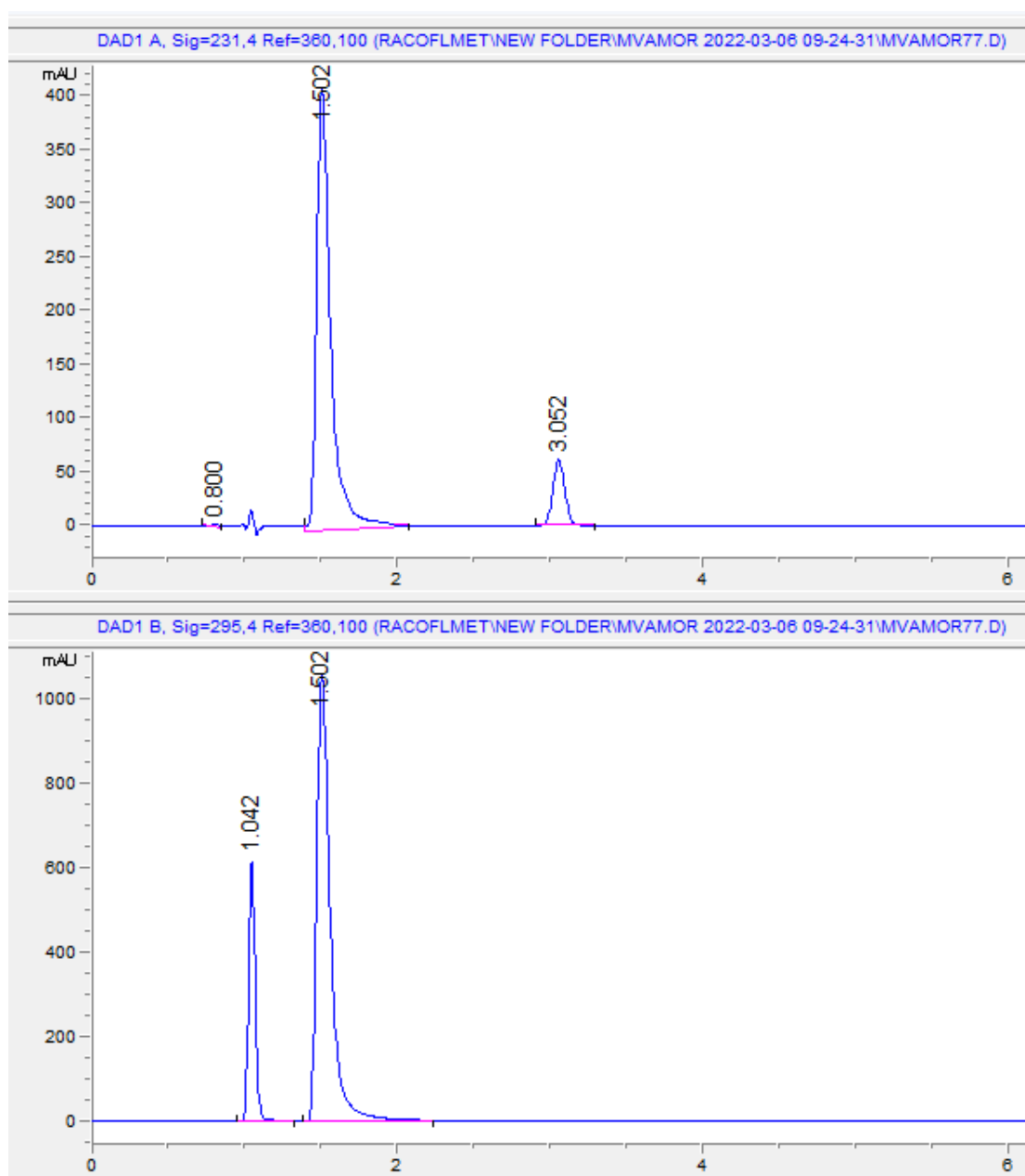


Figure S5: Chromatogram of sample solutions of MET(1.042 min), OFL (1.502 min) and RAC (3.052 min)

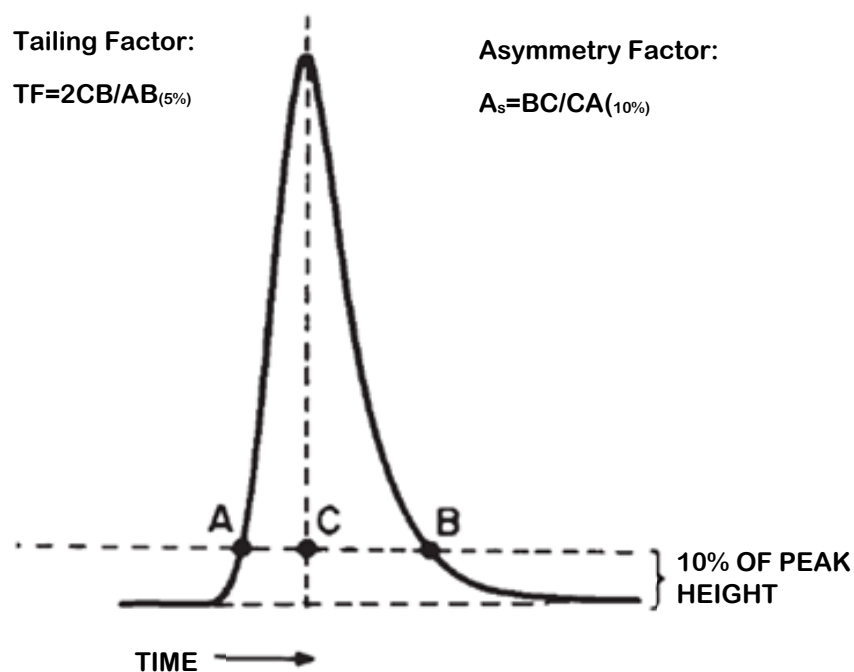


Figure S6: Equation for tailing factor calculation

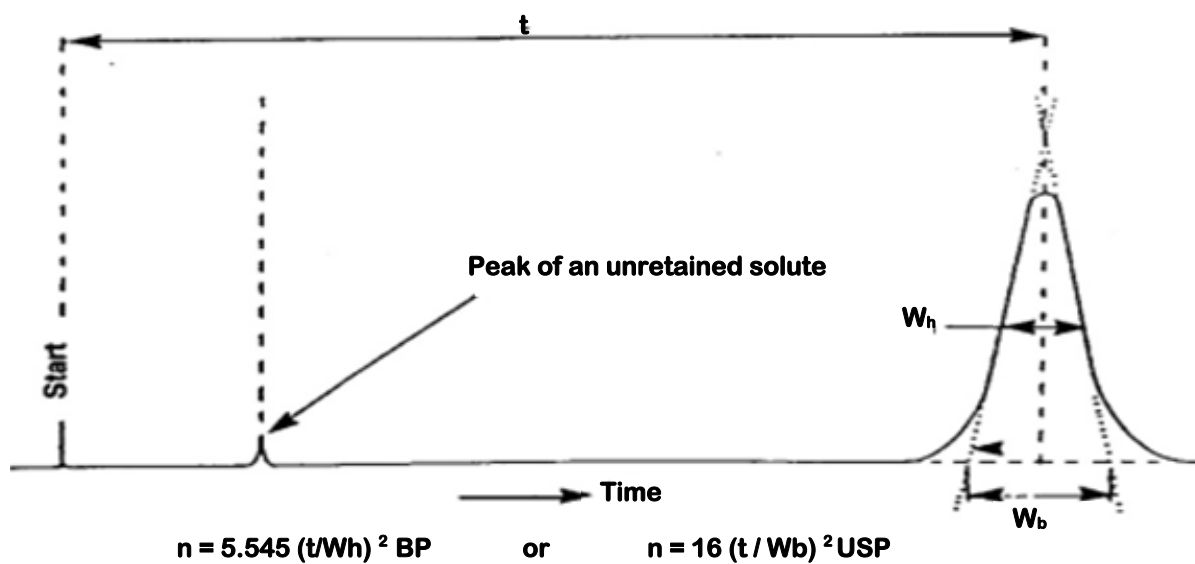


Figure S7 : Equation for the calculation of theoretical plate.

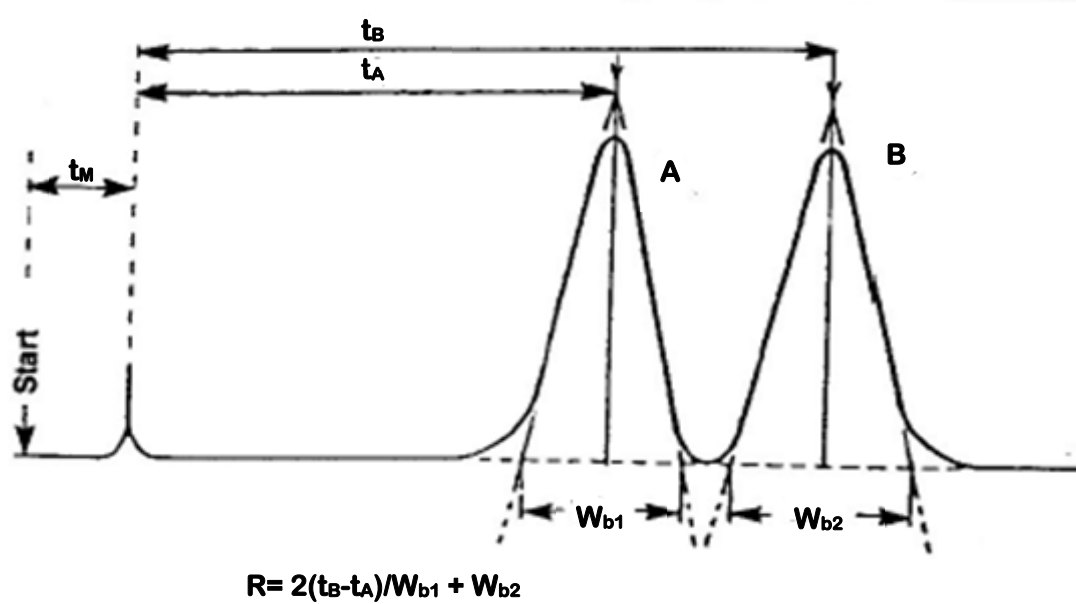


Figure S8: Equation for calculation of resolution