

In Silico Activity Prediction and Docking Studies of the Binding Mechanisms of Levofloxacin Structure Derivatives to Active Receptor Sites of Bacterial Type IIA Topoisomerases

Elena V. Uspenskaya^{1*}, Vasilisa A. Sukhanova¹, Ekaterina Kuzmina¹, Tatyana V. Pleteneva¹, Olga V. Levitskaya¹, Timur M. Garaev², Anton V. Syroeshkin¹

Table S1: Formula for the (R) topological indice of a chemical graph G.

Topological Index	Description	Formula of Topological Indices
Rouvray (R)	The total sum of the distance is another topological index, which is twice the Index W. Чем больше значение индекса, тем более связанной является молекула.	$R = \sum_{j=1}^A \cdot \sum_{i=1}^A d_{ji} = \sum_{i=1}^A = 2W$

Ttribochemical procedure

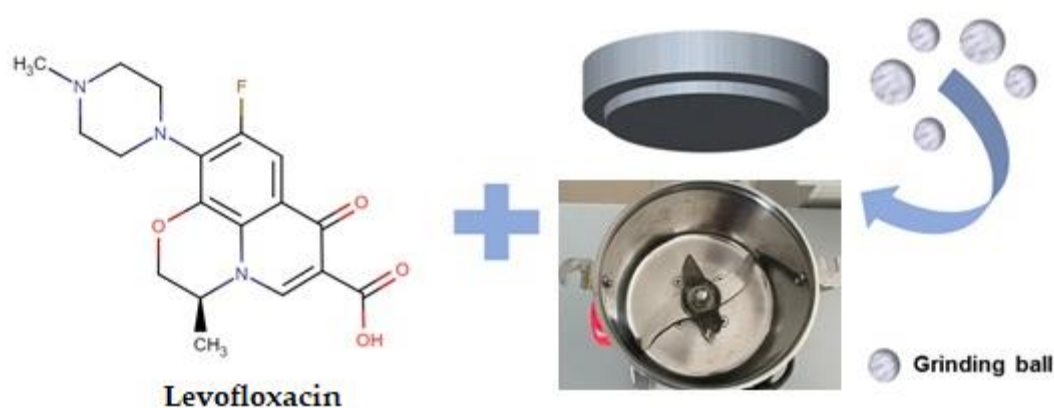


Figure S1: TrbCh method of RMS of Lvf.

Supplementary Material

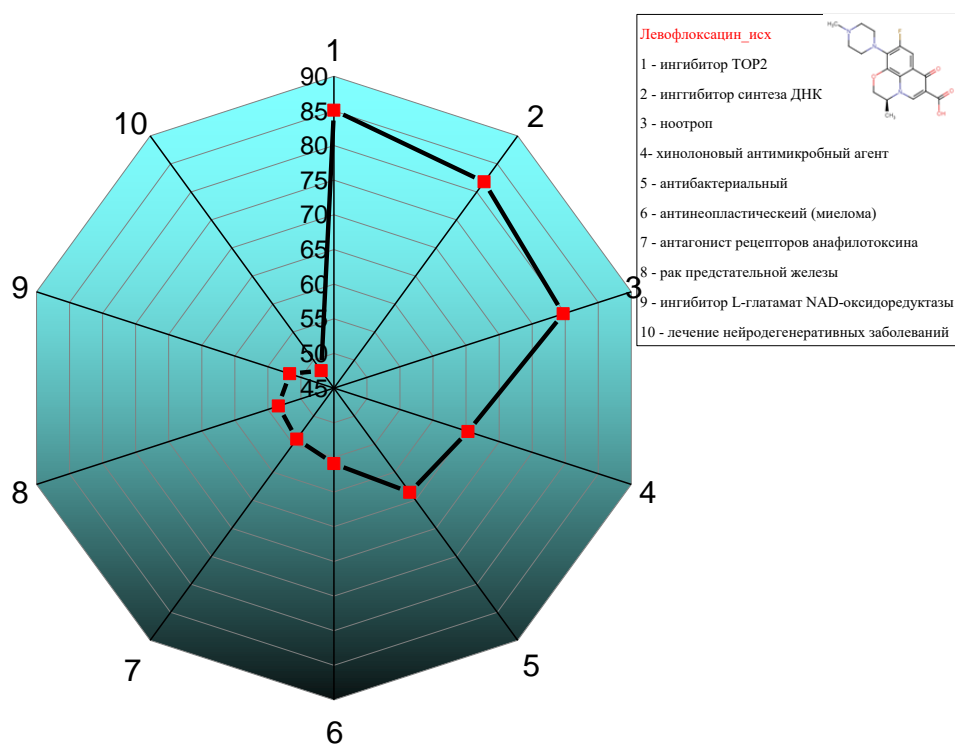


Figure S2: The PASS Soft results for Lvf's derivatives.

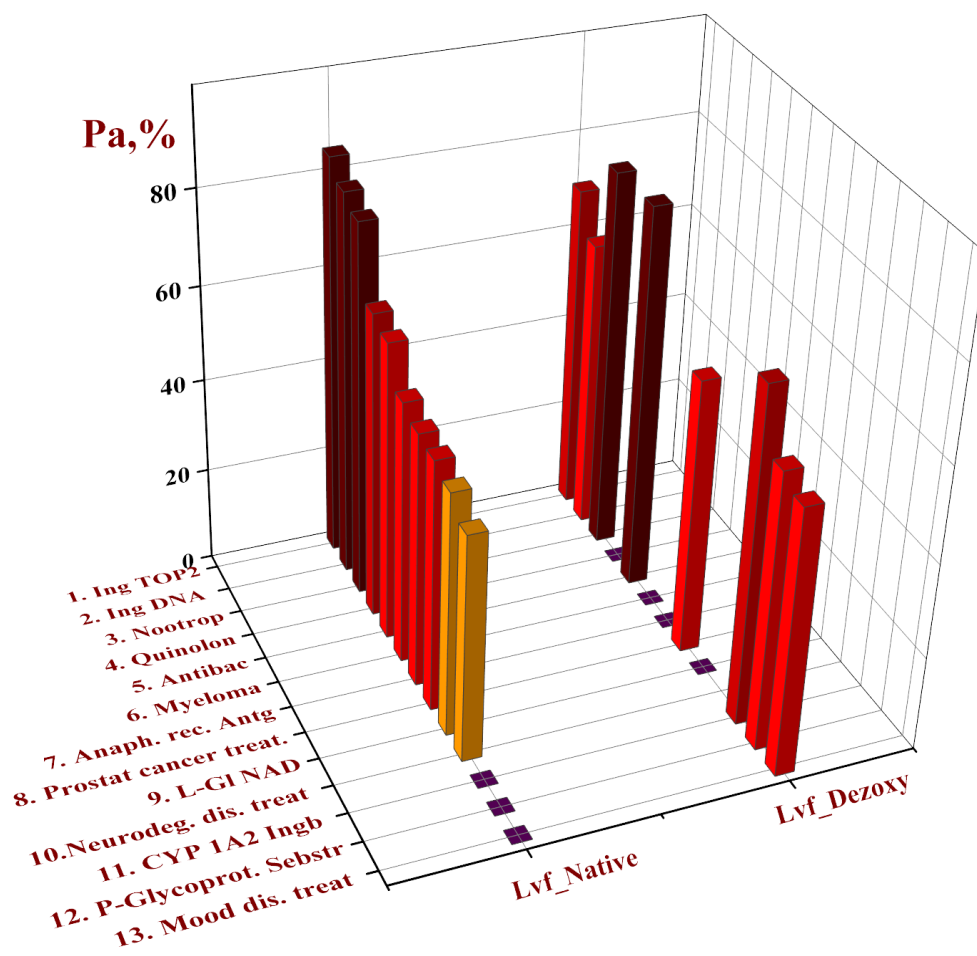
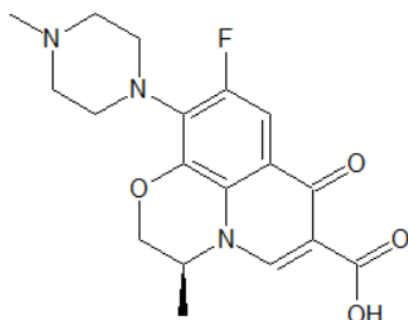


Figure S3: The Pa for the RMS of.

Supplementary Material

LFXbasic

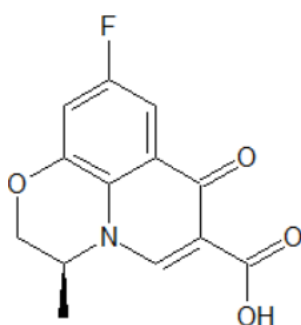


☐ All ☒ Pa>Pi ☐ Pa>0,3 ☐ Pa>0,7

Pa	Pi	Activity
0,851	0,003	Topoisomerase II inhibitor
0,818	0,004	DNA synthesis inhibitor
0,797	0,018	Nootropic
0,653	0,001	Antibiotic Quinolone-like
0,636	0,007	Antibacterial
0,559	0,006	Antineoplastic (multiple myeloma)
0,534	0,007	Prostate cancer treatment
0,541	0,052	Anaphylatoxin receptor antagonist
0,517	0,057	Glutamate-5-semialdehyde dehydrogenase

Wiener -1.#J	Rouvray -1.#J	Balaban -1.#J	Detour -1.#J	Electropy -1.#J
597.6840	1193.6060	2.0036	3227.9390	28.7045

LFXwithout piperazine

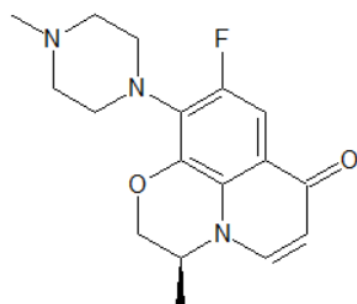


☐ All ☒ Pa>Pi ☐ Pa>0,3 ☐ Pa>0,7

Pa	Pi	Activity
0,839	0,001	Antibacterial, ophthalmic
0,756	0,003	Topoisomerase II inhibitor
0,753	0,027	Nootropic
0,634	0,008	DNA synthesis inhibitor
0,625	0,037	Glutamate-5-semialdehyde dehydrogenase inhibitor
0,599	0,013	Antiinfective
0,575	0,010	Antibacterial
0,513	0,014	P-glycoprotein substrate

Wiener -1.#J	Rouvray -1.#J	Balaban -1.#J	Detour -1.#J	Electropy -1.#J
234.3270	467.1780	2.4284	1480.9860	19.6346

LFXno COOH



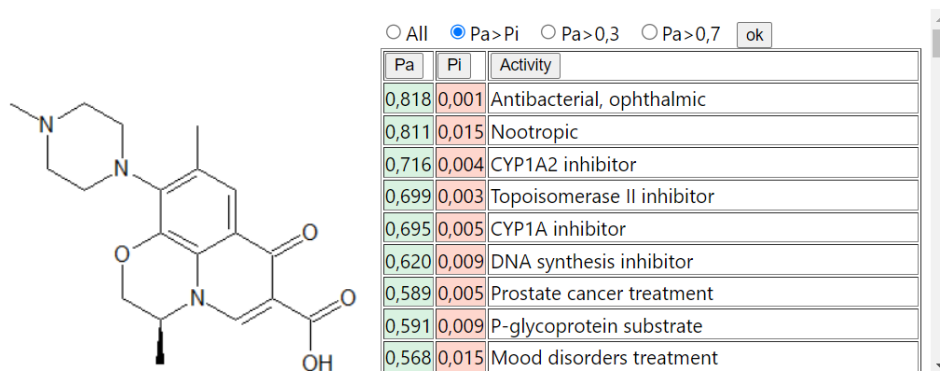
☐ All ☒ Pa>Pi ☐ Pa>0,3 ☐ Pa>0,7

Pa	Pi	Activity
0,818	0,001	Antibacterial, ophthalmic
0,811	0,015	Nootropic
0,716	0,004	CYP1A2 inhibitor
0,699	0,003	Topoisomerase II inhibitor
0,695	0,005	CYP1A inhibitor
0,620	0,009	DNA synthesis inhibitor
0,589	0,005	Prostate cancer treatment
0,591	0,009	P-glycoprotein substrate
0,568	0,015	Mood disorders treatment

Wiener -1.#J	Rouvray -1.#J	Balaban -1.#J	Detour -1.#J	Electropy -1.#J
427.3360	853.4100	1.9777	2478.9310	22.5301

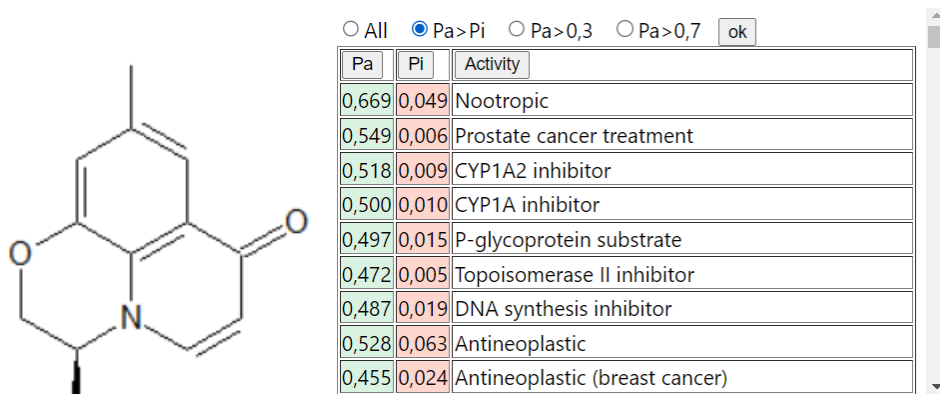
Supplementary Material

LFXnoF



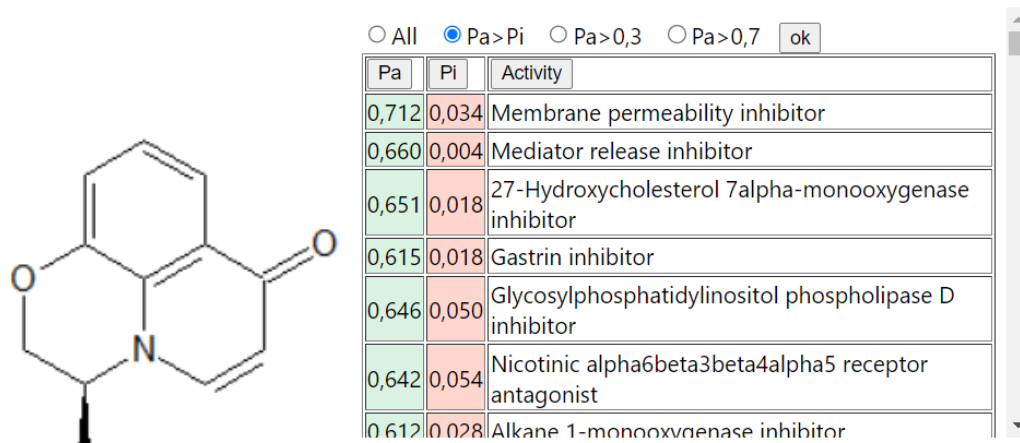
Wiener -1. #J	Rouvray -1. #J	Balaban -1. #J	Detour -1. #J	Electropy -1. #J
601.5135	1201.5980	1.9925	3236.0975	24.4566

LFXnaked



Wiener -1. #J	Rouvray -1. #J	Balaban -1. #J	Detour -1. #J	Electropy -1. #J
147.1820	293.7210	2.3744	1023.8795	10.7142

LFXtotally naked



Wiener -1. #J	Rouvray -1. #J	Balaban -1. #J	Detour -1. #J	Electropy -1. #J
121.8700	243.0970	2.3729	887.6155	10.4147

Scheme S1: PASS (Prediction of Activity Spectra for Substances) Online for RMS and PMS of LvF

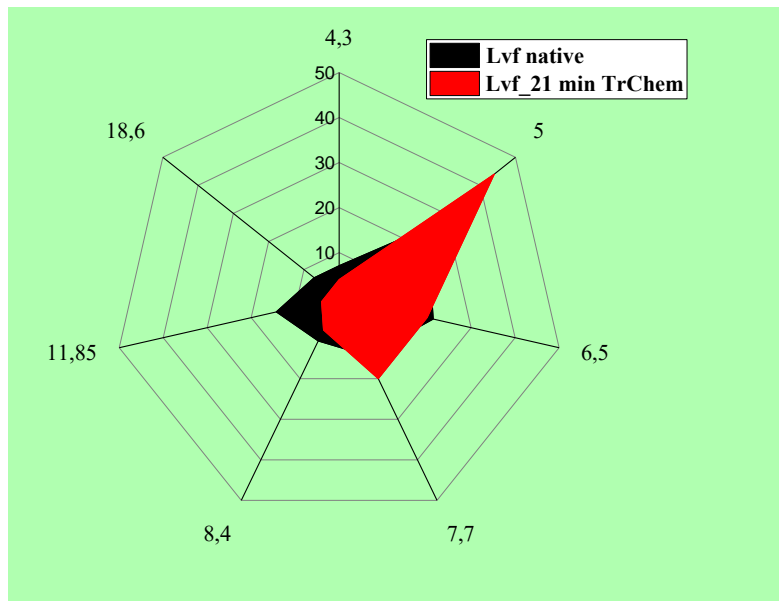


Figure S4: Optical Microscope granulometry of RMS of Lvf.