

Figure S1. Beating data of hiPSC-CMs group A at various temperatures. These data correspond to Figure 7 in the manuscript. Each graph is the signal at the temperatures shown below. (A) 22°C (B) 24°C (C) 28°C (D) 32°C.

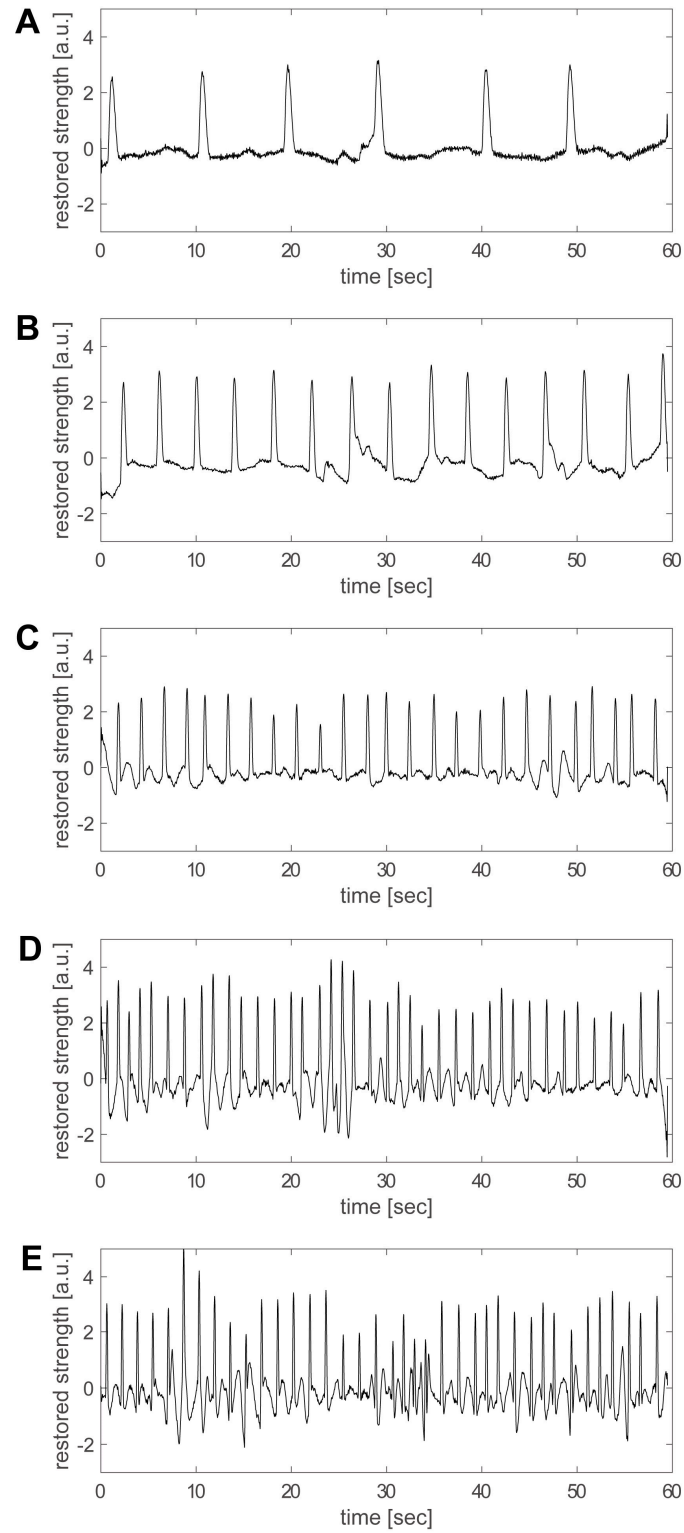


Figure S2. Beating data of hiPSC-CMs group B at various temperatures. These data correspond to Figure 7 in the manuscript. Each graph is the signal at the temperatures shown below. (A) 22°C (B) 24°C (C) 28°C (D) 32°C (E) 36°C.

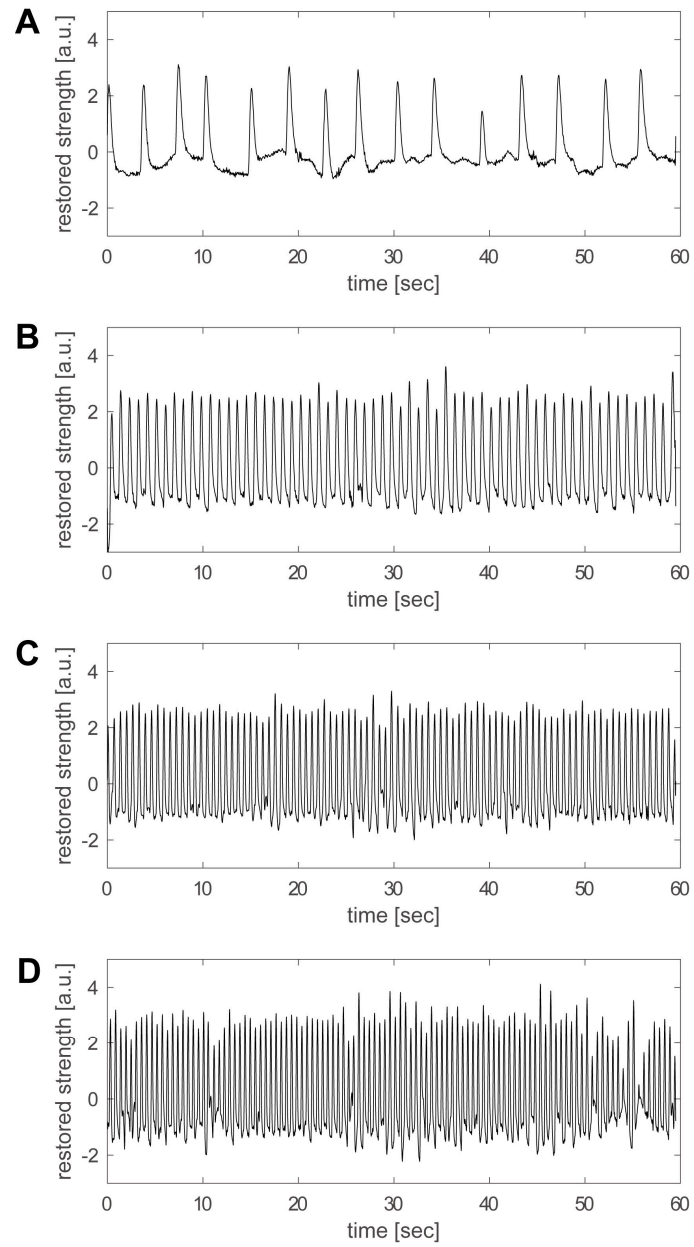


Figure S3. Beating data of hiPSC-CMs group C at various temperatures. These data correspond to Figure 7 in the manuscript. Each graph is the signal at the temperatures shown below. (A) 22°C (B) 24°C (C) 28°C (D) 32°C.

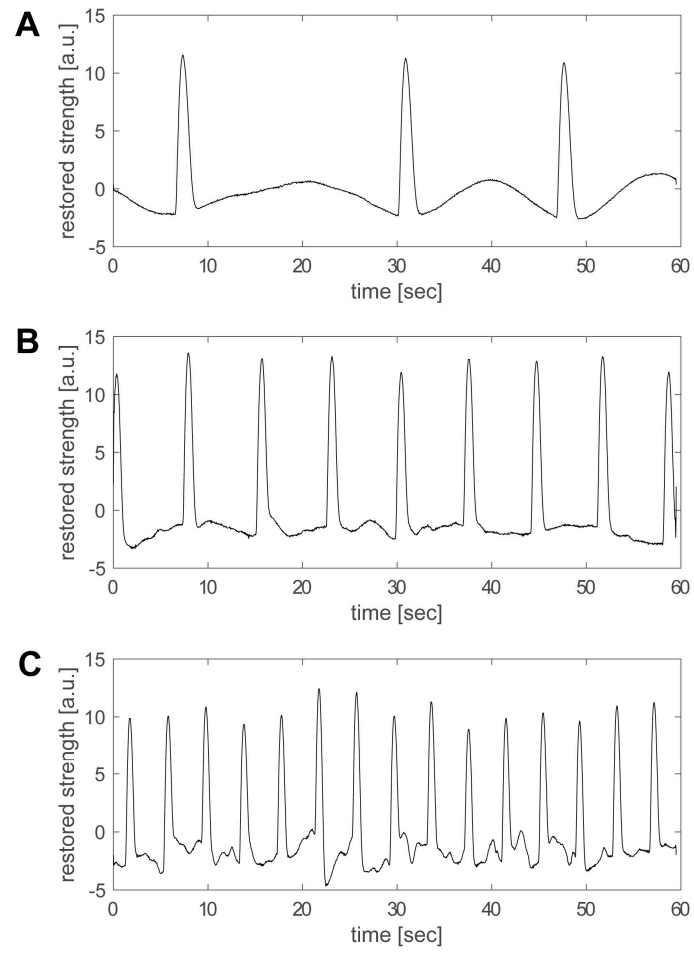


Figure S4. Beating data of hiPSC-CMs group E at various temperatures. These data correspond to Figure 7 in the manuscript. Each graph is the signal at the temperatures shown below. (A) 22°C (B) 24°C (C) 28°C.

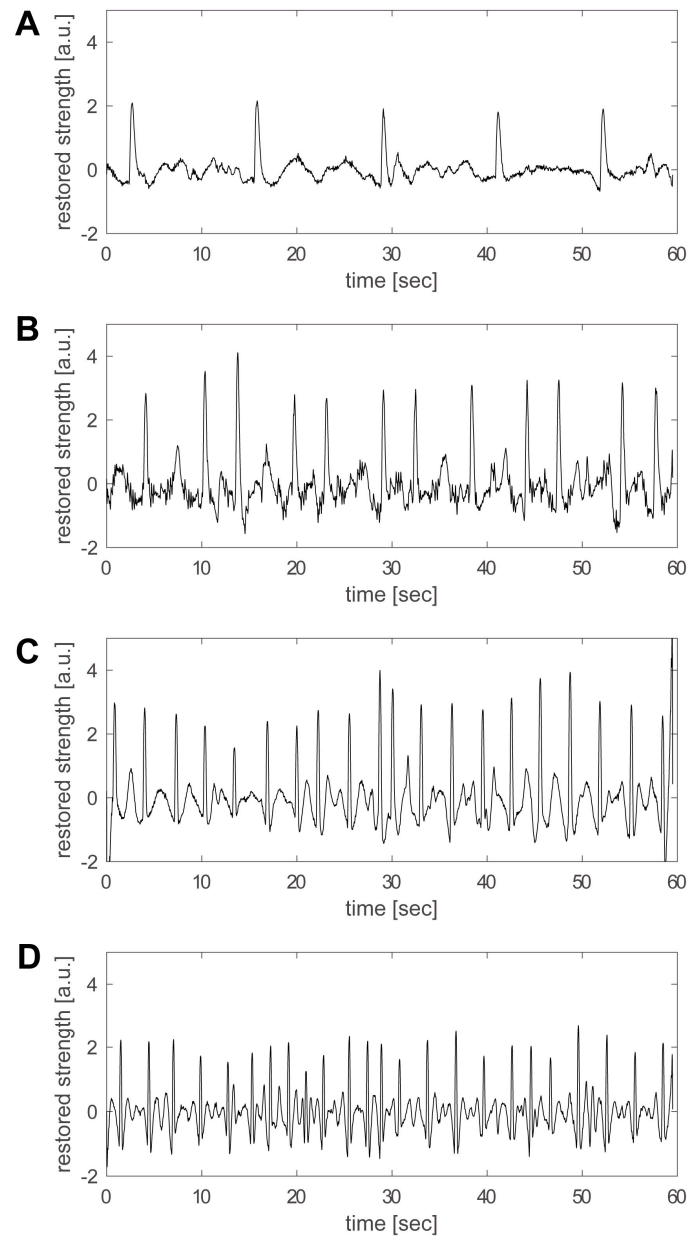


Figure S5. Beating data of hiPSC-CMs group F at various temperatures. These data correspond to Figure 7 in the manuscript. Each graph is the signal at the temperatures shown below. (A) 22°C (B) 24°C (C) 28°C (D) 32°C.

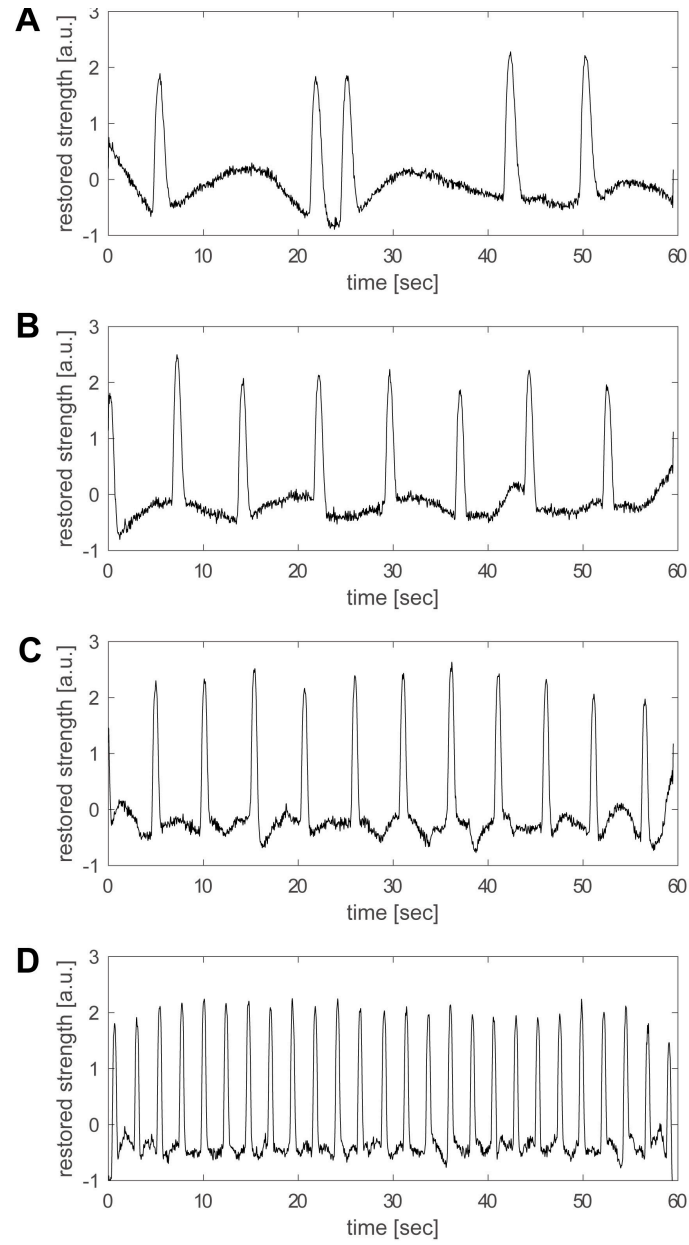


Figure S6. Beating data of hiPSC-CMs group G at various temperatures. These data correspond to Figure 7 in the manuscript. Each graph is the signal at the temperatures shown below. (A) 22°C (B) 24°C (C) 28°C (D) 32°C.

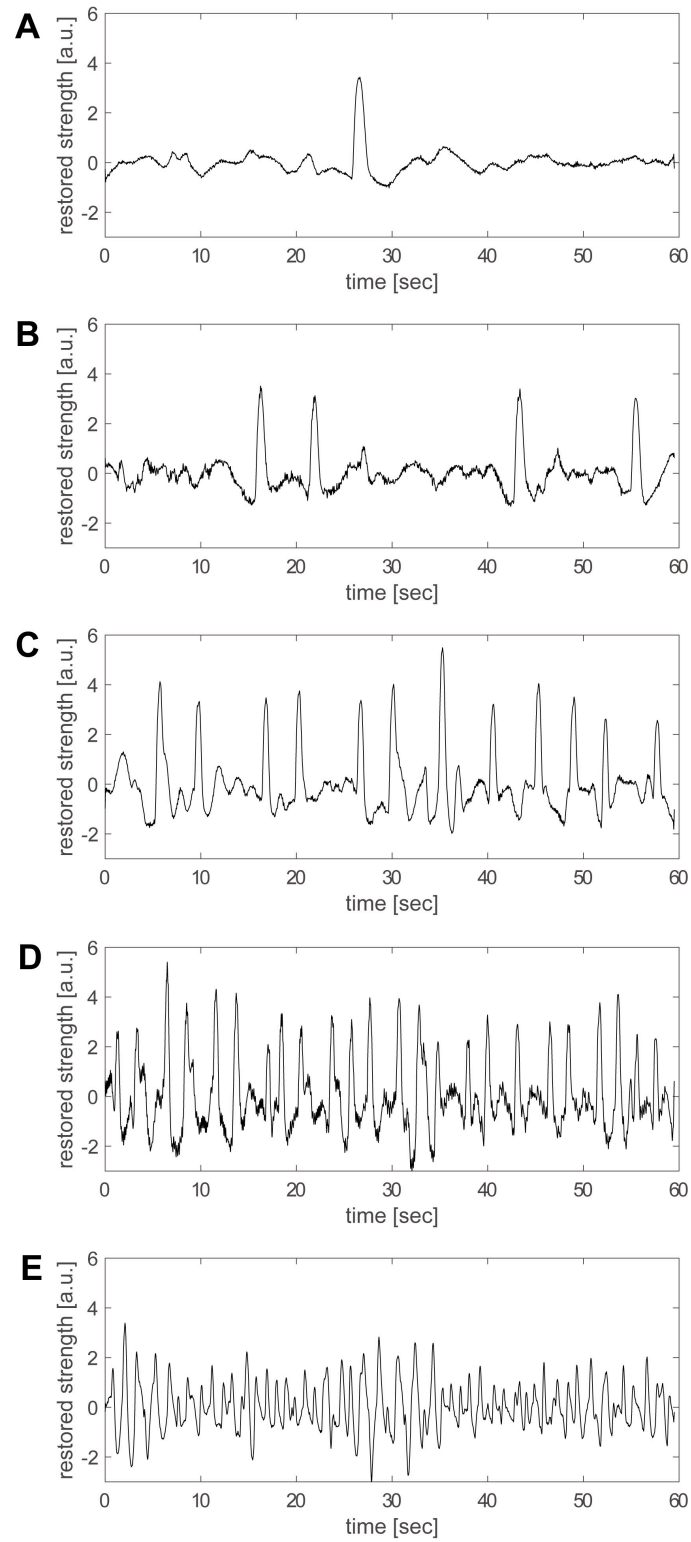


Figure S7. Beating data of hiPSC-CMs group H at various temperatures. These data correspond to Figure 7 in the manuscript. Each graph is the signal at the temperatures shown below. (A) 22°C (B) 24°C (C) 28°C (D) 32°C (E) 36°C.

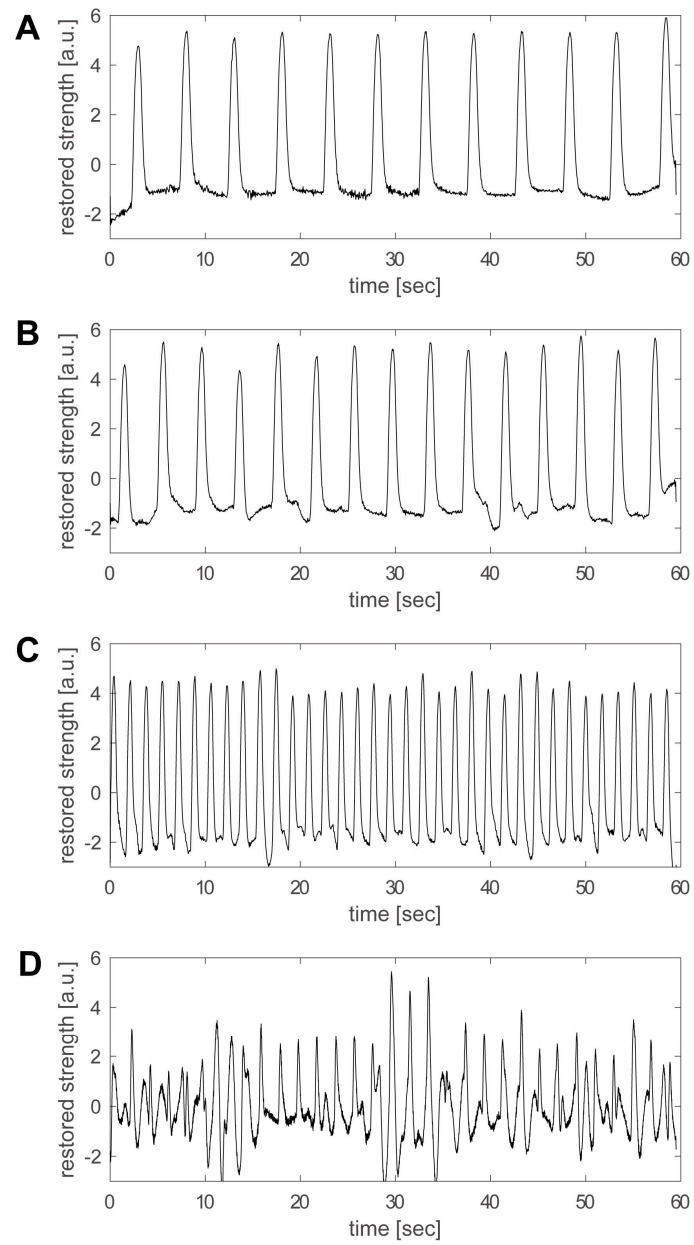


Figure S8. Beating data of hiPSC-CMs group I at various temperatures. These data correspond to Figure 7 in the manuscript. Each graph is the signal at the temperatures shown below. (A) 22°C (B) 24°C (C) 28°C (D) 32°C.

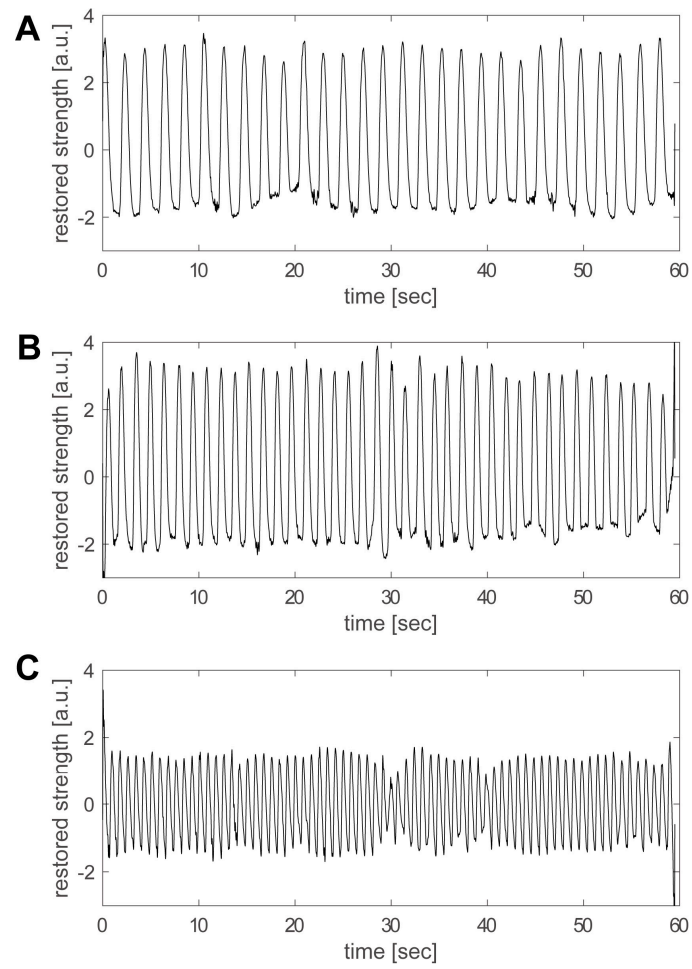


Figure S9. Beating data of hiPSC-CMs group J at various temperatures. These data correspond to Figure 7 in the manuscript. Each graph is the signal at the temperatures shown below. (A) 22°C (B) 24°C (C) 28°C.

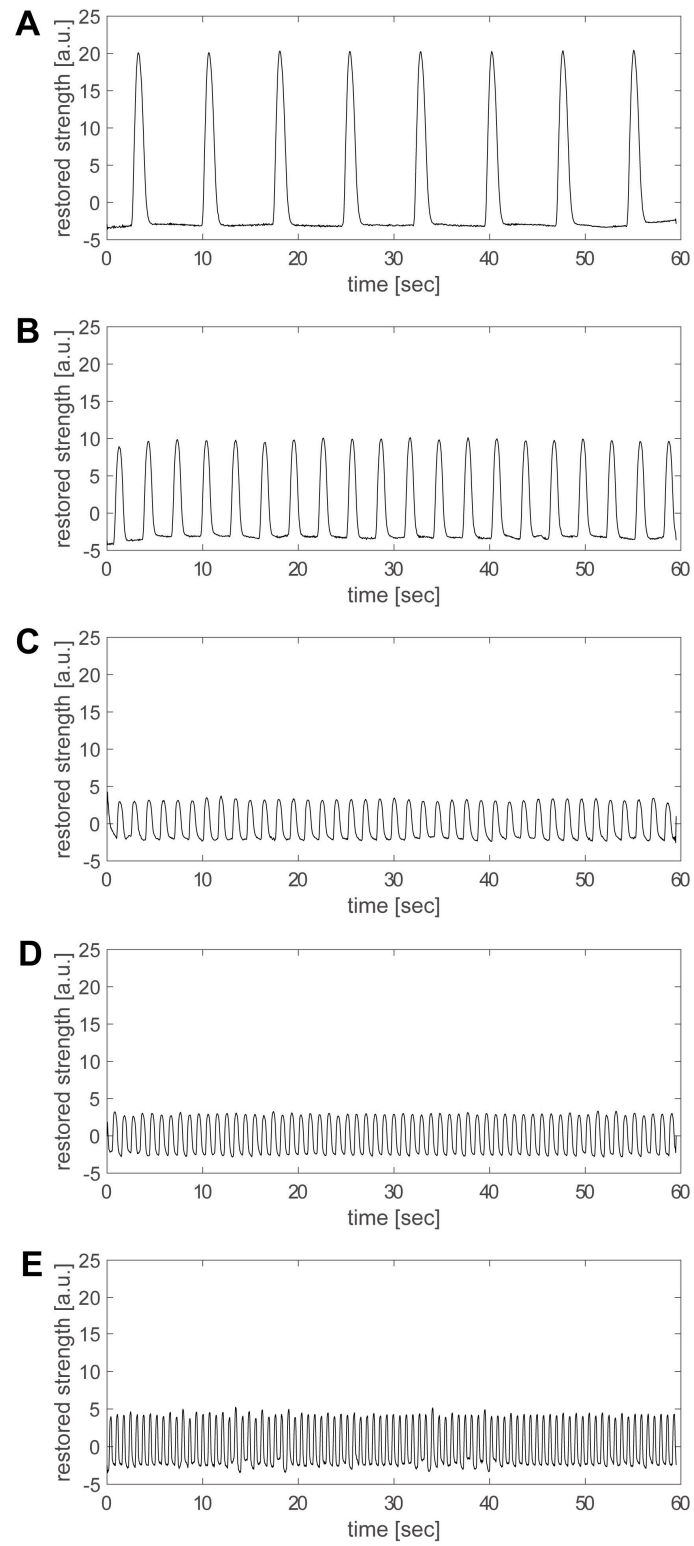


Figure S10. Beating data of hiPSC-CMs group K at various temperatures. These data correspond to Figure 7 in the manuscript. Each graph is the signal at the temperatures shown below. (A) 22°C (B) 24°C (C) 28°C (D) 32°C (E) 36°C.