

Figure S1. Transfer function comparison between plain overmolded microphones and overmolded microphones inside the custom case.

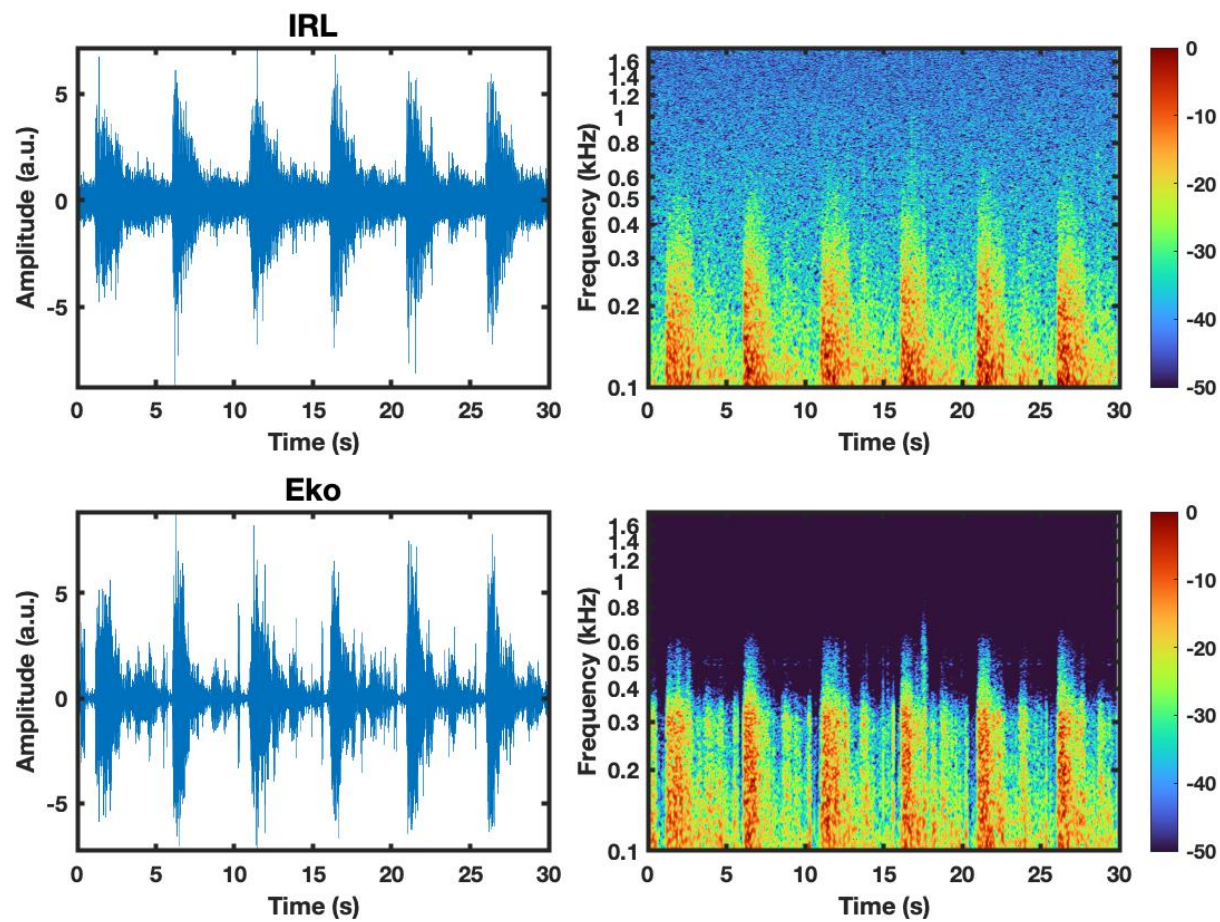


Figure S2. Time-frequency visualization of a 30-s segment of lung sounds recorded with our system (top row) and the Eko Core digital stethoscope (bottom row). The sounds were recorded from healthy volunteer at the posterior left lower chest quadrant.