

Supplementary Materials:

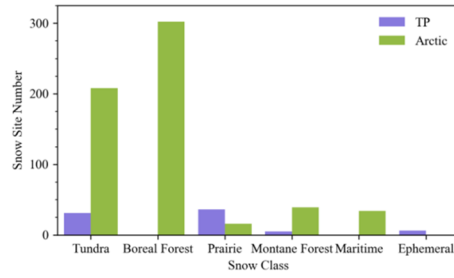


Figure S1. Snow site number for snow classes

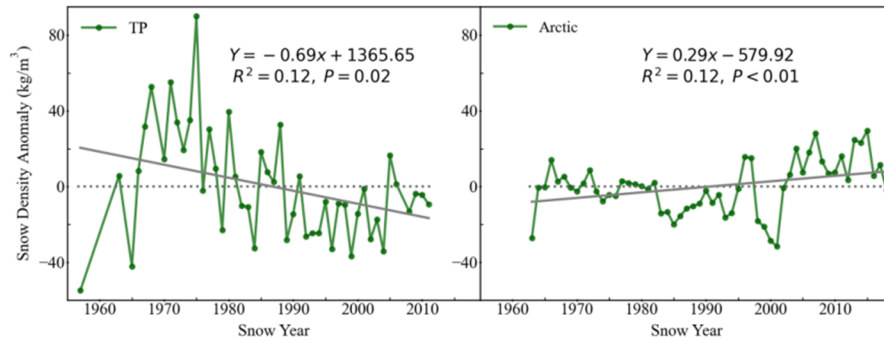


Figure S2. Time series of average snow density

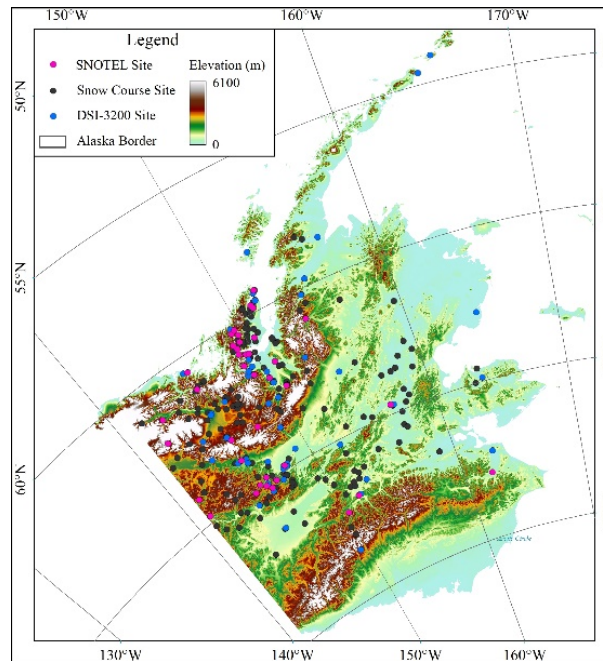


Figure S3. Geographical location of snow sites with elevation as background in Alaska

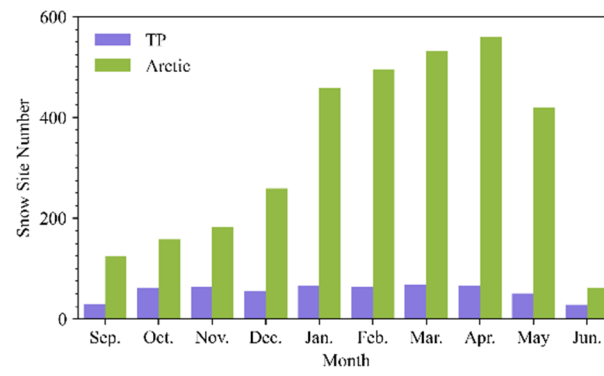


Figure S4. Snow site number of per month

Table S1: Monthly mean snow densities with one standard deviation of each snow class over the TP and the Arctic. (kg/m³)

Month	Area	Tundra	Boreal Forest	Prairie	Montane Forest	Maritime	Ephemeral
Sep.	TP	129±49	—	143±48	—	—	—
	Arctic	234±84	233±83	—	257±96	327±97	—
Oct.	TP	132±32	—	109±22	—	—	—
	Arctic	190±75	152±61	152±27	175±34	214±66	—
Nov.	TP	141±50	—	113±40	—	—	—
	Arctic	201±64	148±40	175±52	177±64	185±70	—
Dec.	TP	153±69	—	128±36	—	—	—
	Arctic	212±56	172±32	194±44	199±37	244±26	—
Jan.	TP	144±38	—	113±29	—	—	96±11
	Arctic	218±61	182±36	195±49	214±44	277±34	—
Feb.	TP	143±32	—	124±49	—	—	—
	Arctic	227±60	193±42	211±46	224±47	289±32	—
Mar.	TP	141±47	—	112±42	—	—	—
	Arctic	234±55	204±35	214±78	243±51	312±27	—
Apr.	TP	136±39	—	134±66	—	—	—
	Arctic	258±58	241±47	263±61	294±58	357±26	—
May.	TP	138±47	—	135±43	—	—	—
	Arctic	286±72	277±68	291±45	290±54	365±66	—
Jun.	TP	147±49	—	177±55	—	—	—
	Arctic	348±57	366±95	—	—	415±56	—
Annual	TP	140±33	—	130±41	—	—	96±11
	Arctic	228±56	210±42	215±51	232±52	290±63	—

Table S2: Monthly mean snow densities with standard deviation over the TP and the Arctic. (kg/m³)

Area	Sep.	Oct.	Nov.	Dec.	Jan.	Feb.	Mar.	Apr.	May.	Jun.	Annual
TP	133±48	122±29	132±72	139±56	125±37	134±42	126±46	137±58	137±45	158±52	138±61
Arctic	244±88	177±68	183±63	200±51	206±55	215±57	225±53	257±59	289±72	346±85	223±54