

Supplementary Material

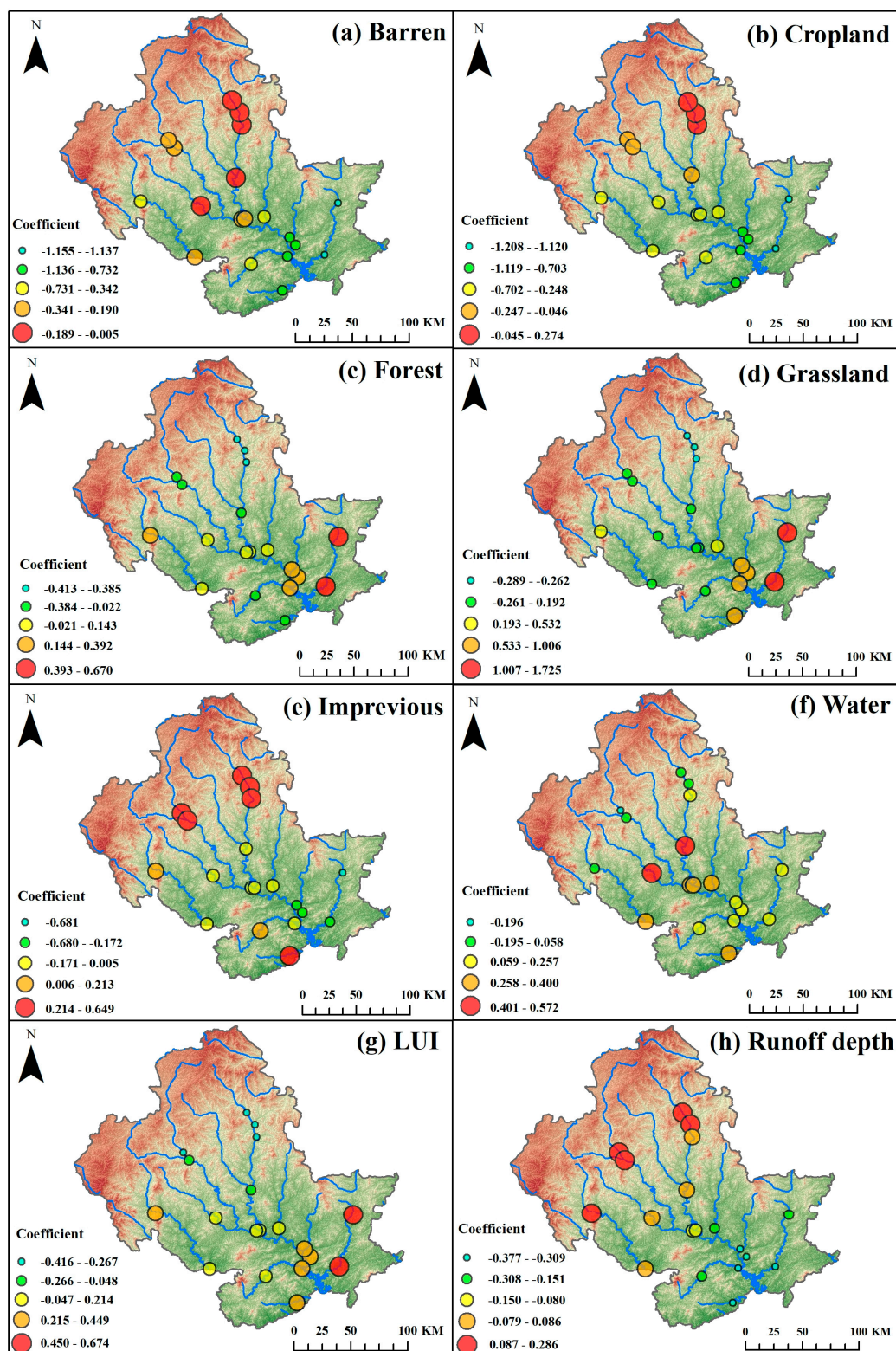


Figure S1 Geographically and temporally weighted regression between land use and runoff in 2006

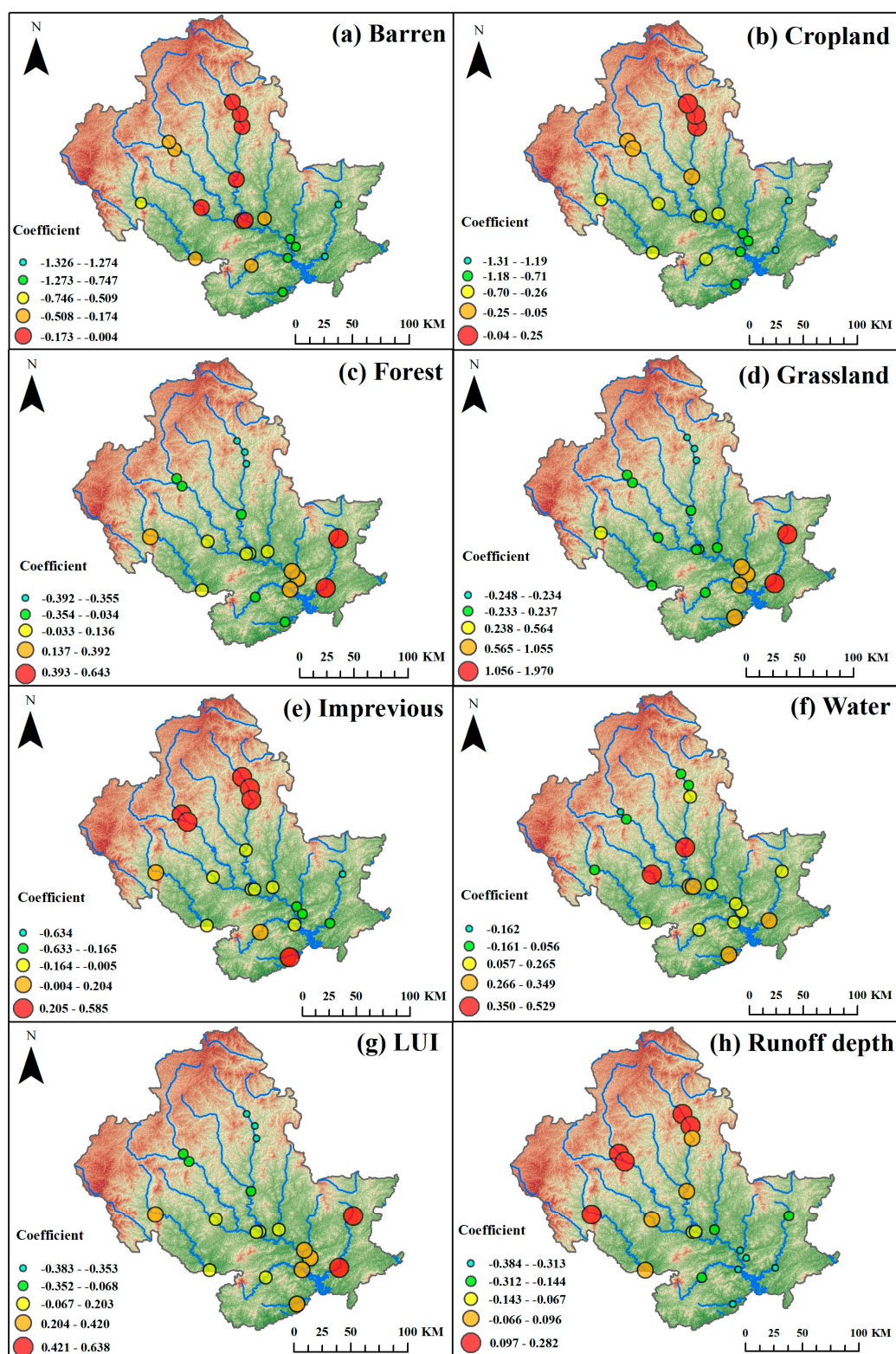


Figure S2 Geographically and temporally weighted regression between land use and runoff in 2010

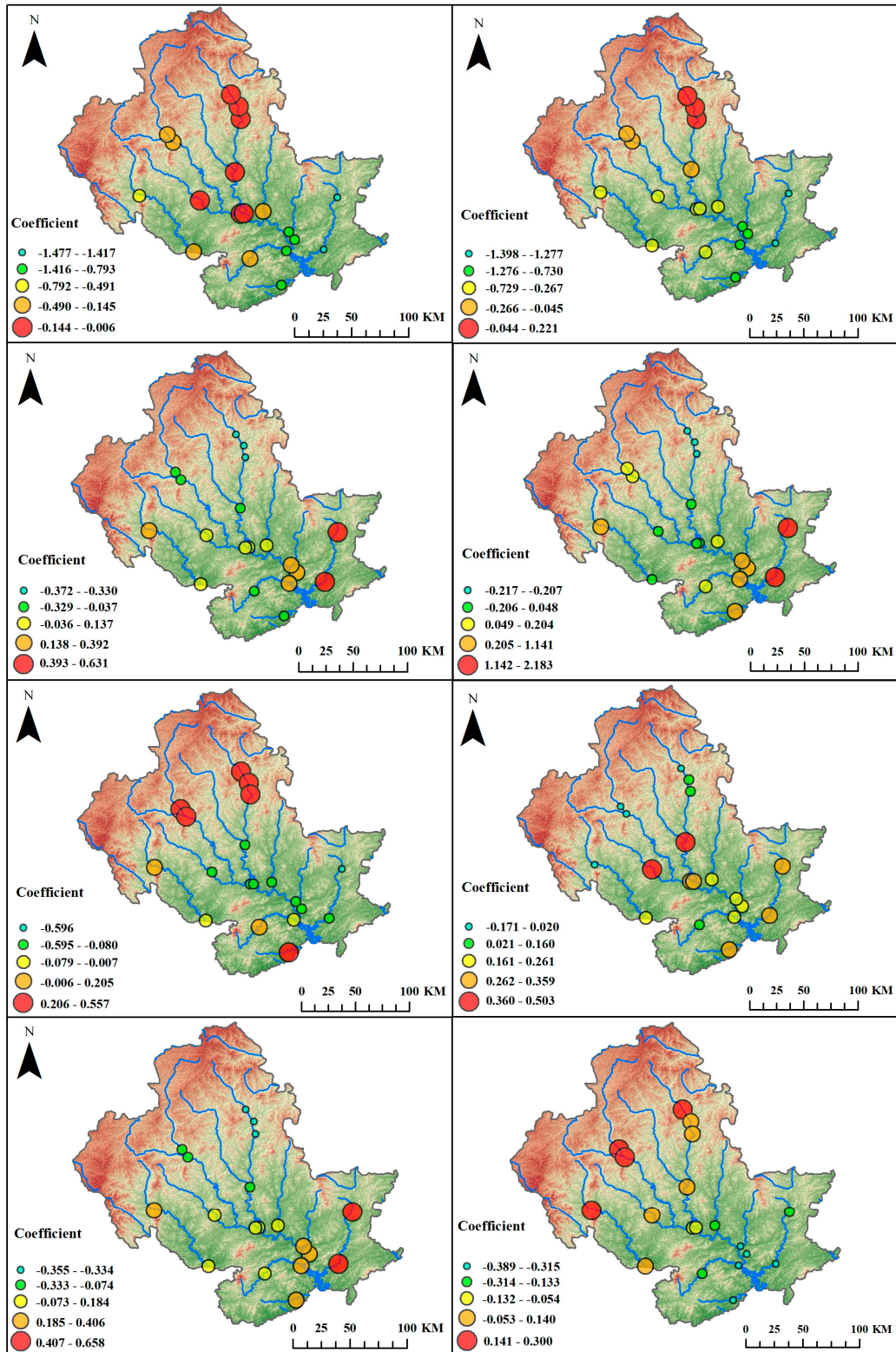


Figure S3 Geographically and temporally weighted regression between land use and runoff in 2014

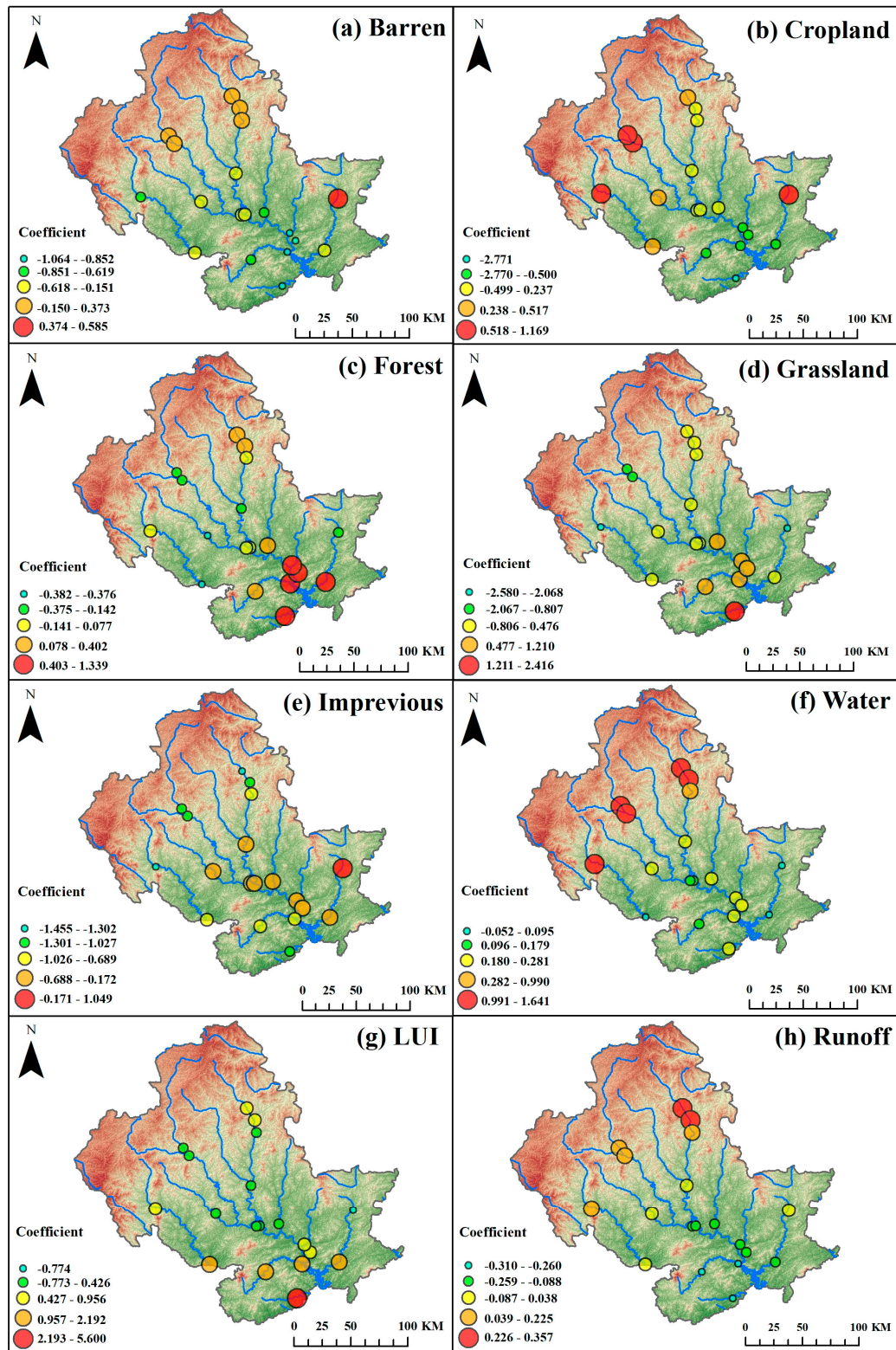


Figure S4 Geographically and temporally weighted regression between land use and runoff depth in 2006

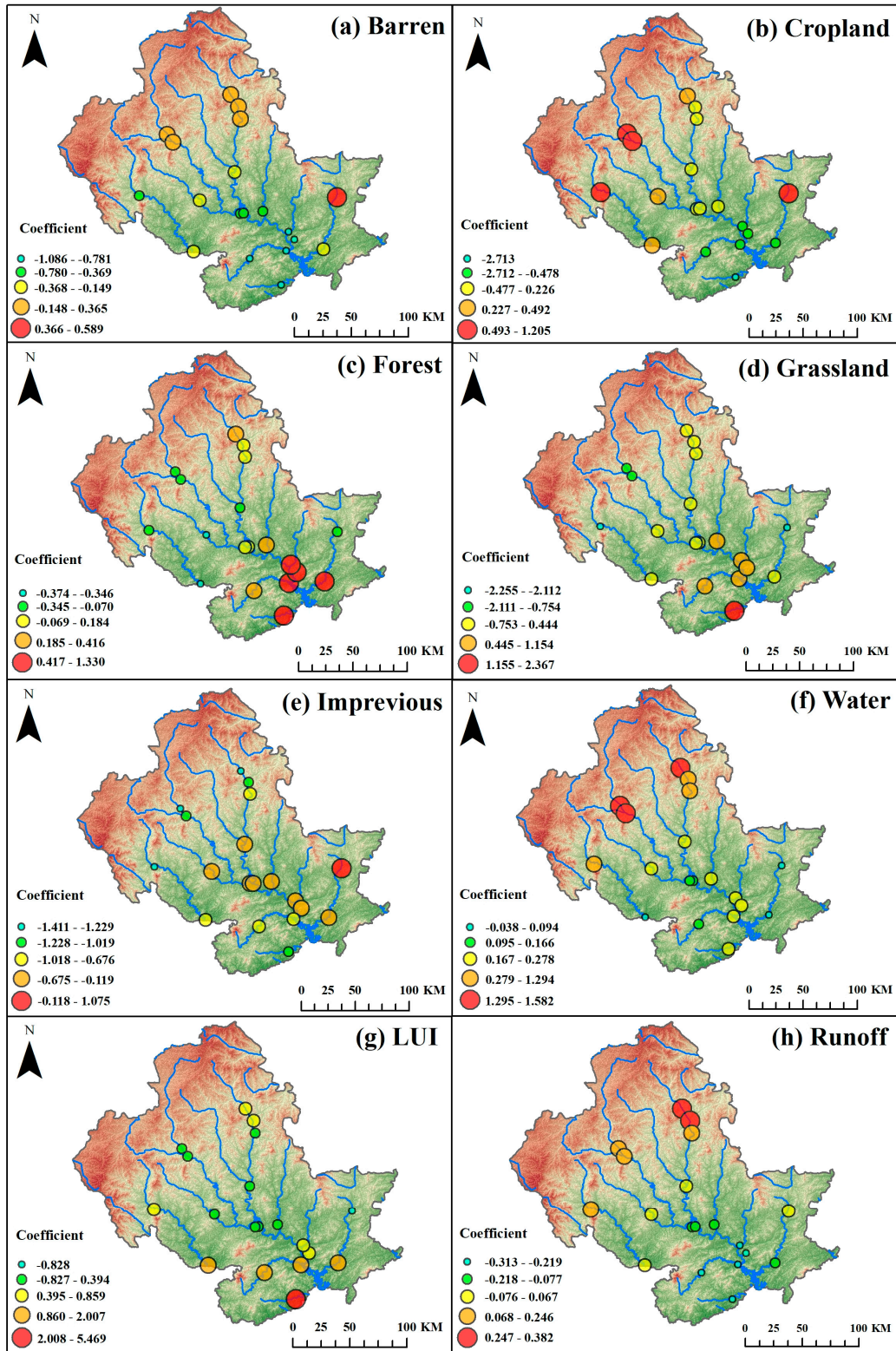


Figure S5 Geographically and temporally weighted regression between land use and runoff depth in 2010

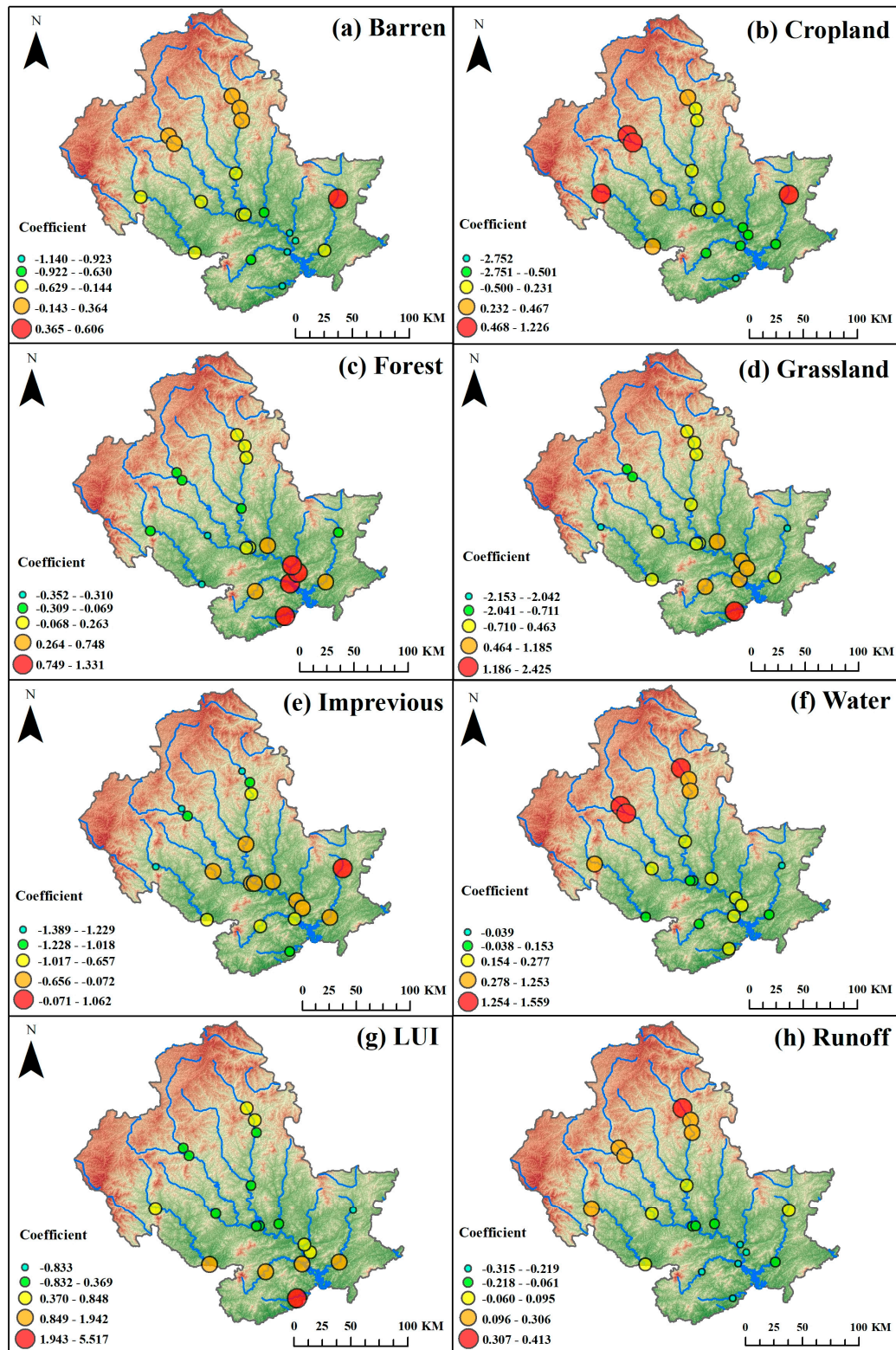


Figure S6 Geographically and temporally weighted regression between land use and runoff depth in 2014

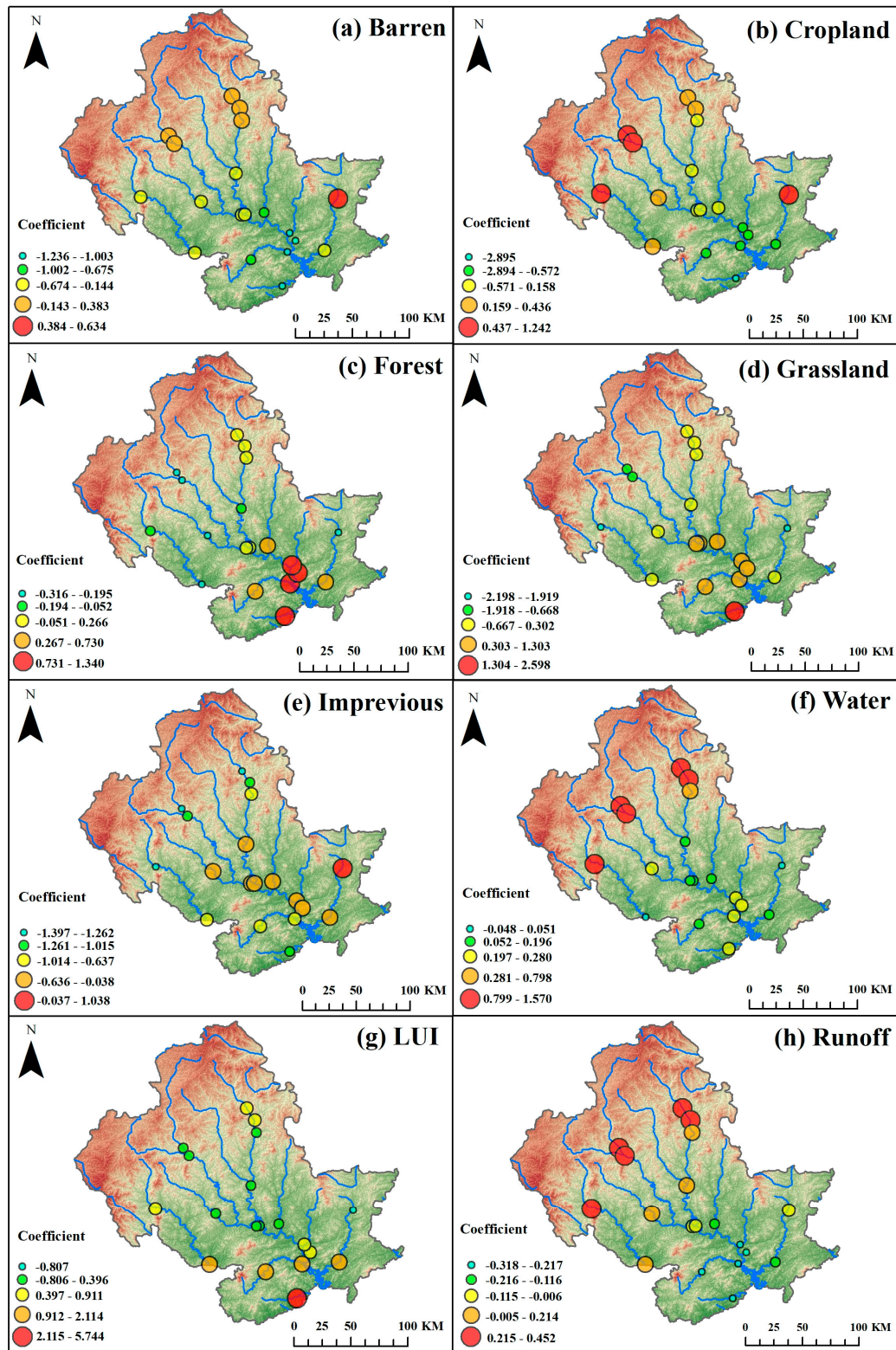


Figure S7 Geographically and temporally weighted regression between land use and runoff depth in 2018

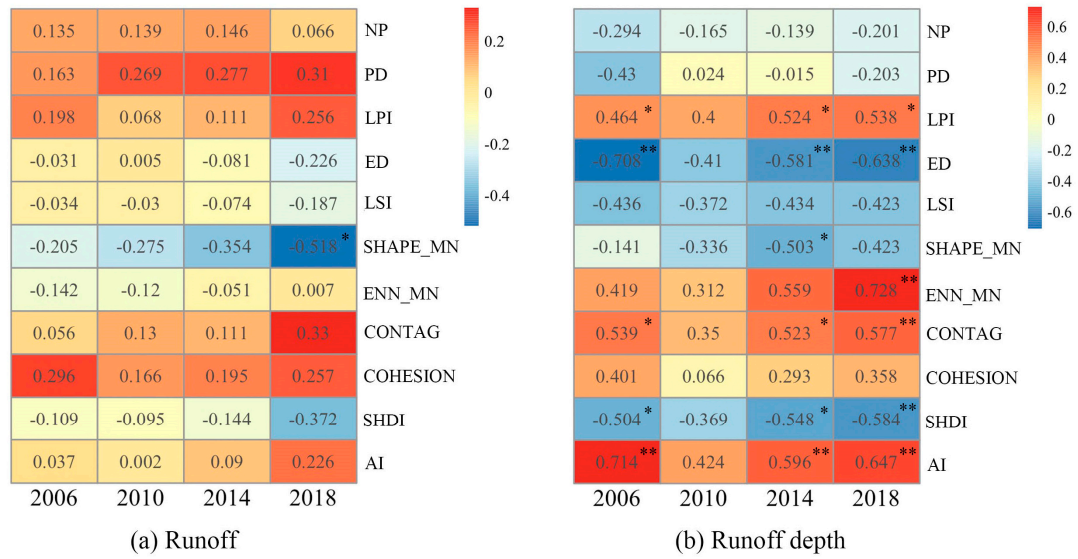


Figure S8 Correlations between runoff and runoff depth as well as landscape indexes in 2006, 2010, 2014 and 2018

(*, $p < 0.05$; **, $p < 0.01$; ***, $p < 0.001$)

Table S1 Accuracy of geographically and temporally weighted regression

| Dependent variable | AIC_c | R^2 | Bandwidth |
|--------------------|---------|-------|-----------|
| Runoff | 21.636 | 0.500 | 0.267 |
| Runoff depth | 3.352 | 0.684 | 0.246 |