

Supplemental Material

The relative roles of climate variation and human activities in vegetation dynamics in coastal China from 2000 to 2019

Honglei Jiang ^{1,2}, Xia Xu ^{1,2*}, Tong Zhang ^{1,2}, Haoyu Xia ^{1,2}, Yiqin Huang ^{1,2}, Shirong Qiao ^{1,2}

¹ State Key Laboratory of Earth Surface Processes and Resource Ecology, Beijing Normal University, Beijing 100875, China, 202021051112@mail.bnu.edu.cn (T.Z.); jianghonglei@mail.bnu.edu.cn (H.J.); 202021051106@mail.bnu.edu.cn (S. Q.); 202121051111@mail.bnu.edu.cn (H. Y.); 202121051102@mail.bnu.edu.cn (Y. H.);

² School of Natural Sciences, Faculty of Geographical Science, Beijing Normal University, Beijing 100875, China

* Correspondence: xuxia@bnu.edu.cn

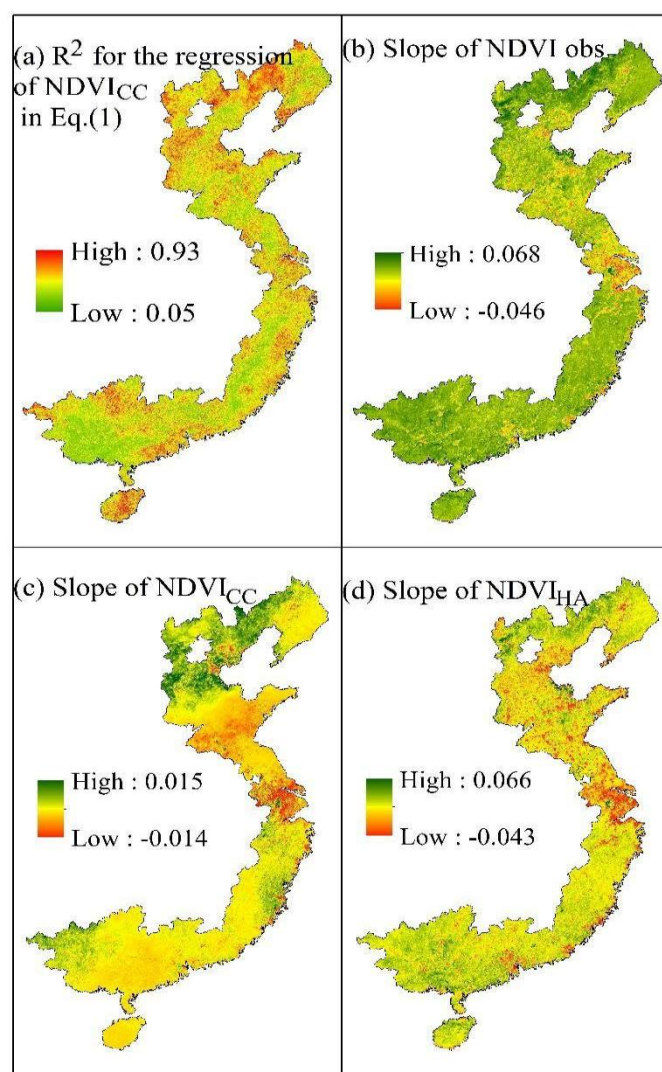


Figure S1. The details on calculation for Eq. (2) and Eq. (3); (a) represents the R square for NDVI_{CC} calculation in Eq. (2); (b), (c) and (d) represents the $SLOP_{obs}$, $SLOP_{CC}$ and $SLOP_{HA}$, retrospectively. .