

Supplementary Materials

Table S1. Summary of the Augmented Dickey–Fuller (ADF) test used to assess the stationarity assumption in the daily streamflow time series* from 01/1980 to 03/2020.

Site	ANA code	Latitude [degree]	Longitude [degree]	Drained Area [km ²]	Test Statistic [-]	p-value [-]	Result
Propriá	49705000	-10.2139	-36.8239	631,000	-5.543	< 0.01	Stationary
Várzea da Palma	41990000	-17.5961	-44.7133	26,500	-11.619	< 0.01	Stationary
Boqueirão	46902000	-11.345	-43.8261	65,900	-10.343	< 0.01	Stationary
Santo Inácio	43880000	-16.2811	-45.4142	23,800	-10.354	< 0.01	Stationary

Note: * the daily streamflow time series were provided by the Brazilian National Water Agency (ANA)

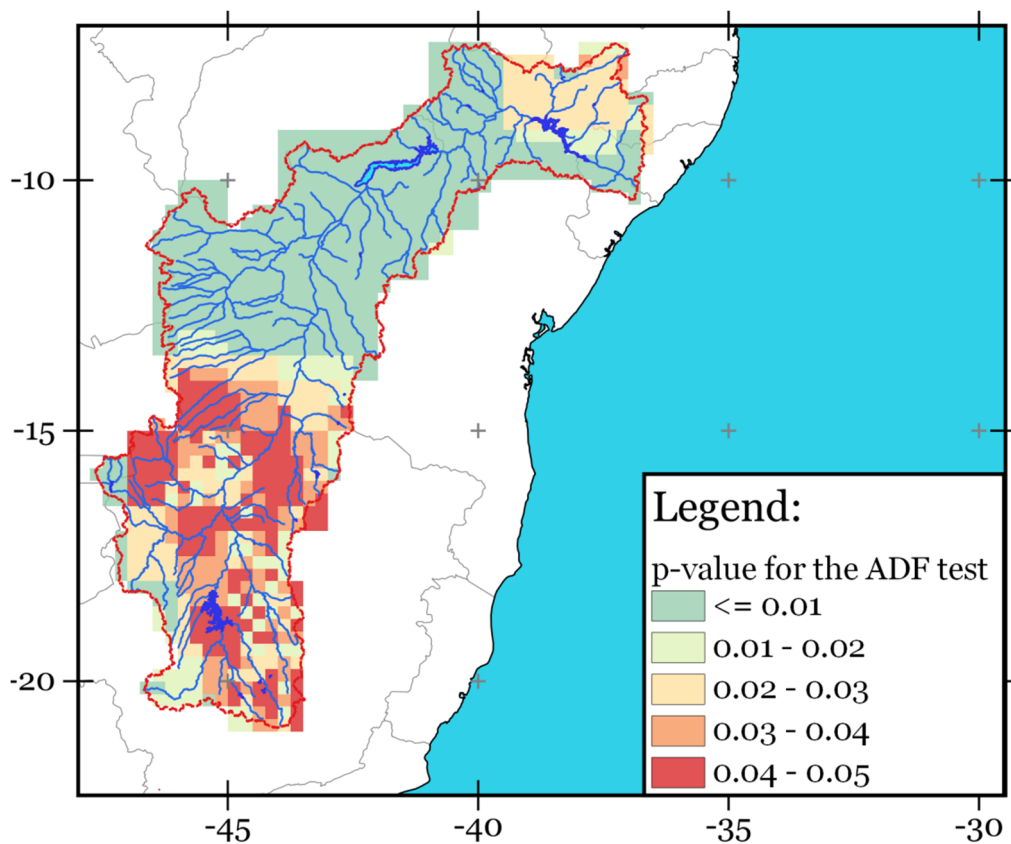


Figure S1. Spatial–temporal distribution of the p-value of the ADF test used to assess the stationarity assumption in the GRACE/GRACE-FO-based averaged terrestrial water storage anomalies (TWSA).