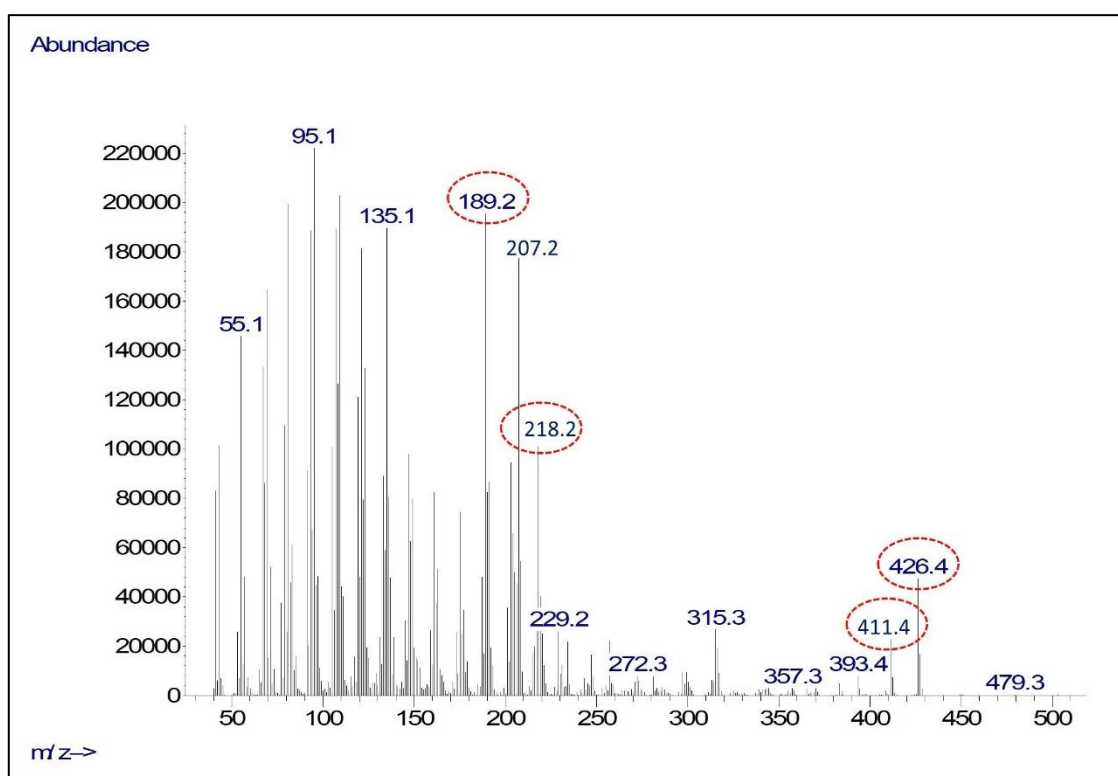
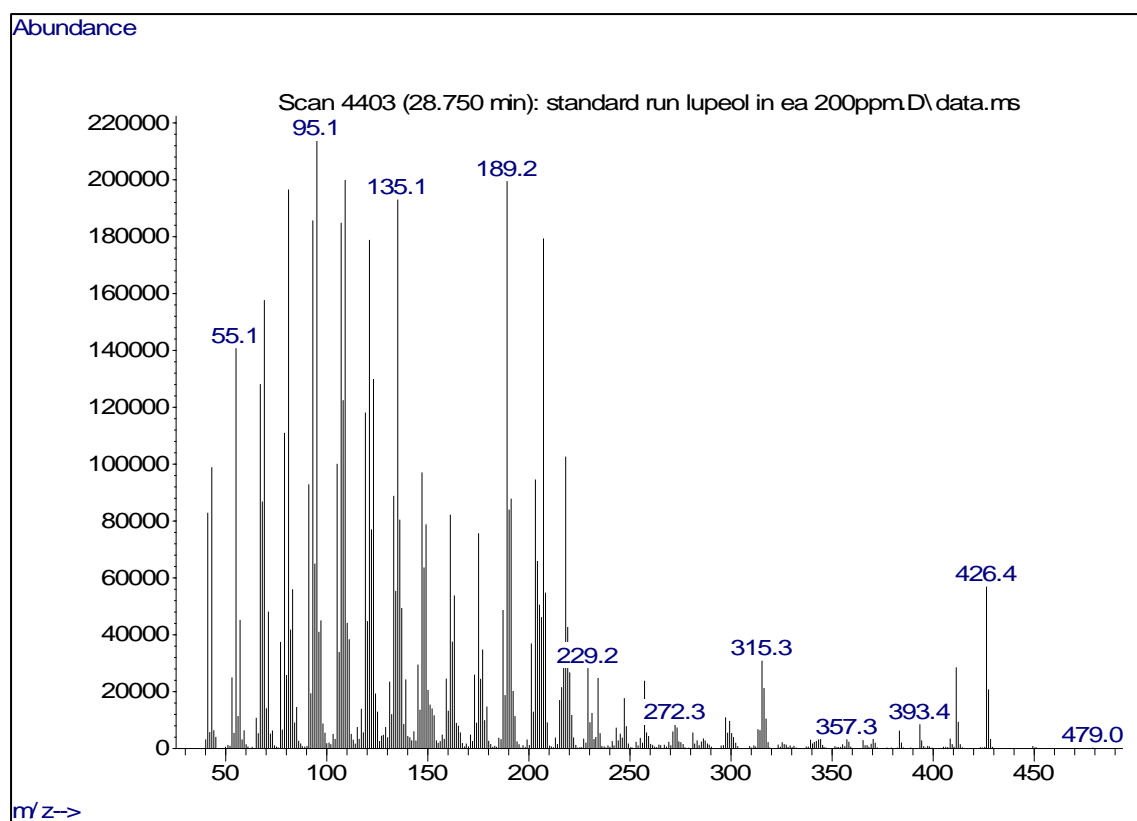


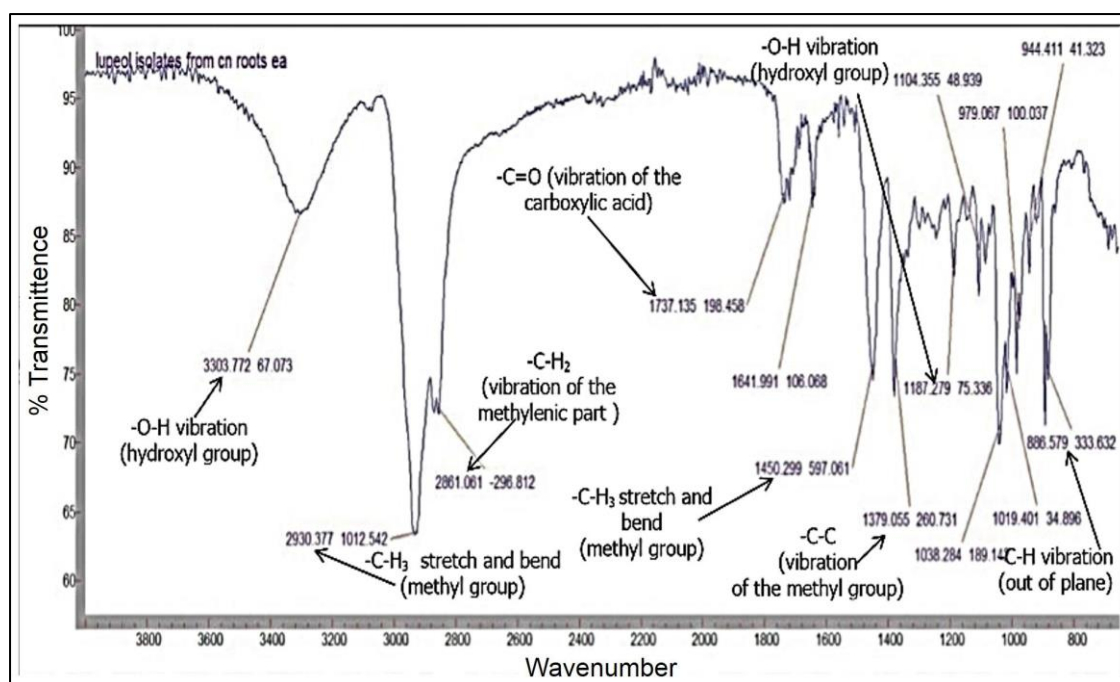
Supplemental Figures



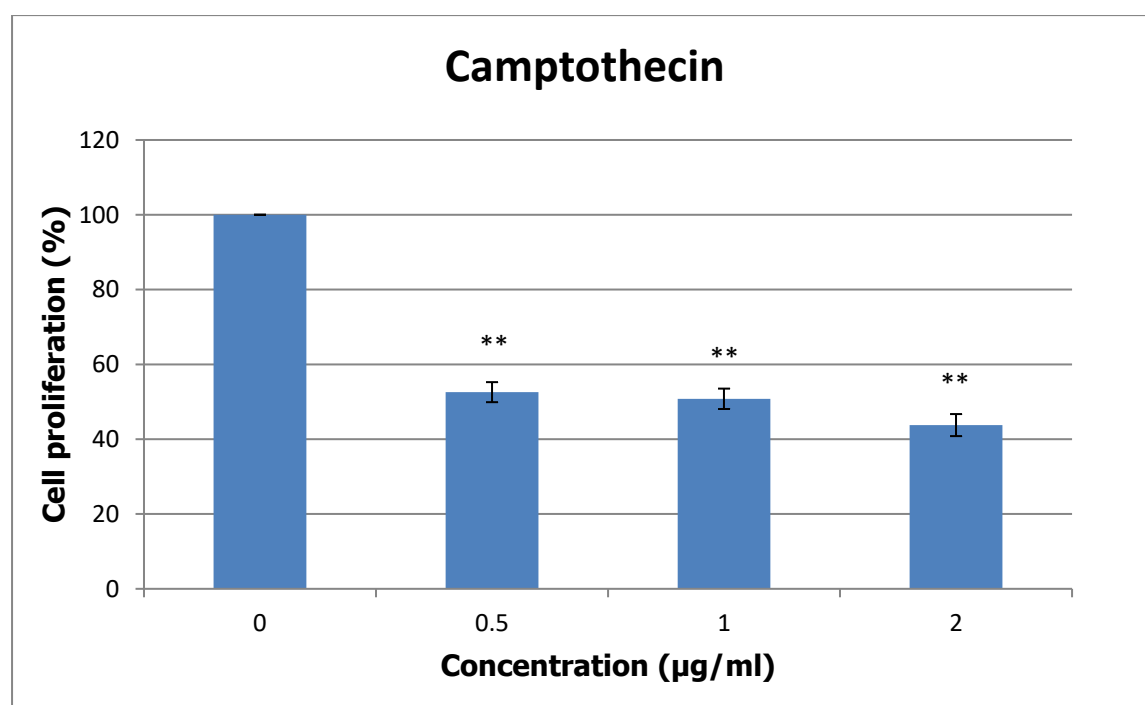
Supplemental Figure S1A. The electron ionization-mass spectrum (EI-MS) of the single main peak at retention time 28.932 min of the total ion chromatogram of the isolated white amorphous compound from *C. nutans* roots.



Supplemental Figure S1B. The electron ionization-mass spectrum (EI-MS) of authentic lupeol.



Supplemental Figure S2. Fourier-transform infrared spectrum (FTIR) of the white amorphous compound (lupeol) isolated from *C. nutans* roots re-dissolved in chloroform (CHCl₃, final concentration = 1000 µg/mL).



Supplemental Figure S3. Cytotoxicity assay of camptothecin against MCF-7 cell lines. The IC₅₀ values were expressed as mean ± SD of the three independent experiments (n = 3). Level of significance (*p < 0.05, **p < 0.01 and ***p < 0.001) for each concentration was compared to the control cells, and was determined using One-way ANOVA followed by post hoc Dunnett test.