

# Supplementary Materials: Transient Permeabilization of Living Cells: Combining Shear Flow and Acoustofluidic Trapping for the Facilitated Uptake of Molecules

Andrej Kamenac <sup>1,2,†</sup>, Felix L. Schilberth <sup>1,†</sup>, Ernst Wagner <sup>2,3</sup>, Achim Wixforth <sup>1,2</sup>, Ulrich Lächelt <sup>2,3</sup> and Christoph Westerhausen <sup>1,2,4,\*</sup>

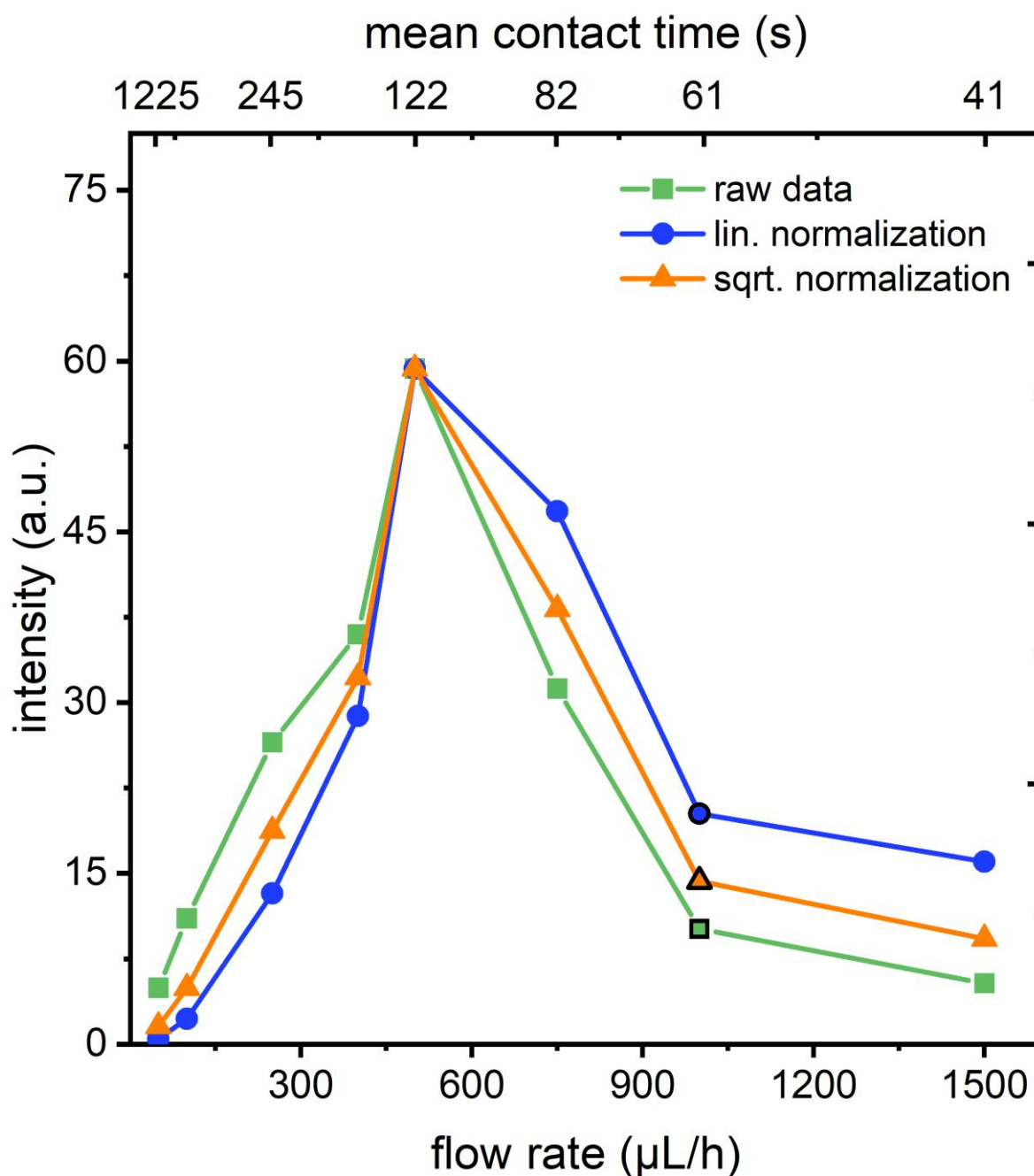
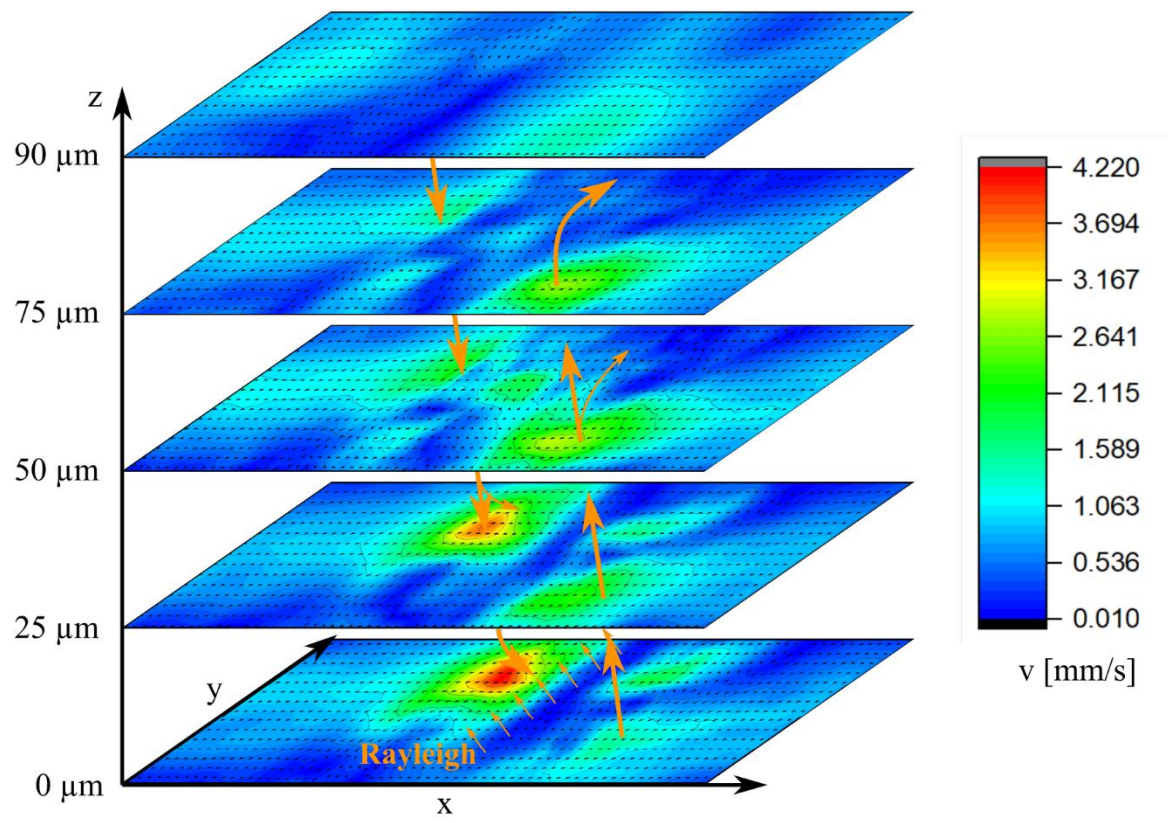


Figure S1. Uptake as function of the flow rate for different corrections



**Figure S2.** Z-scan PIV measurements of the active SAW coupling into the microchannel.