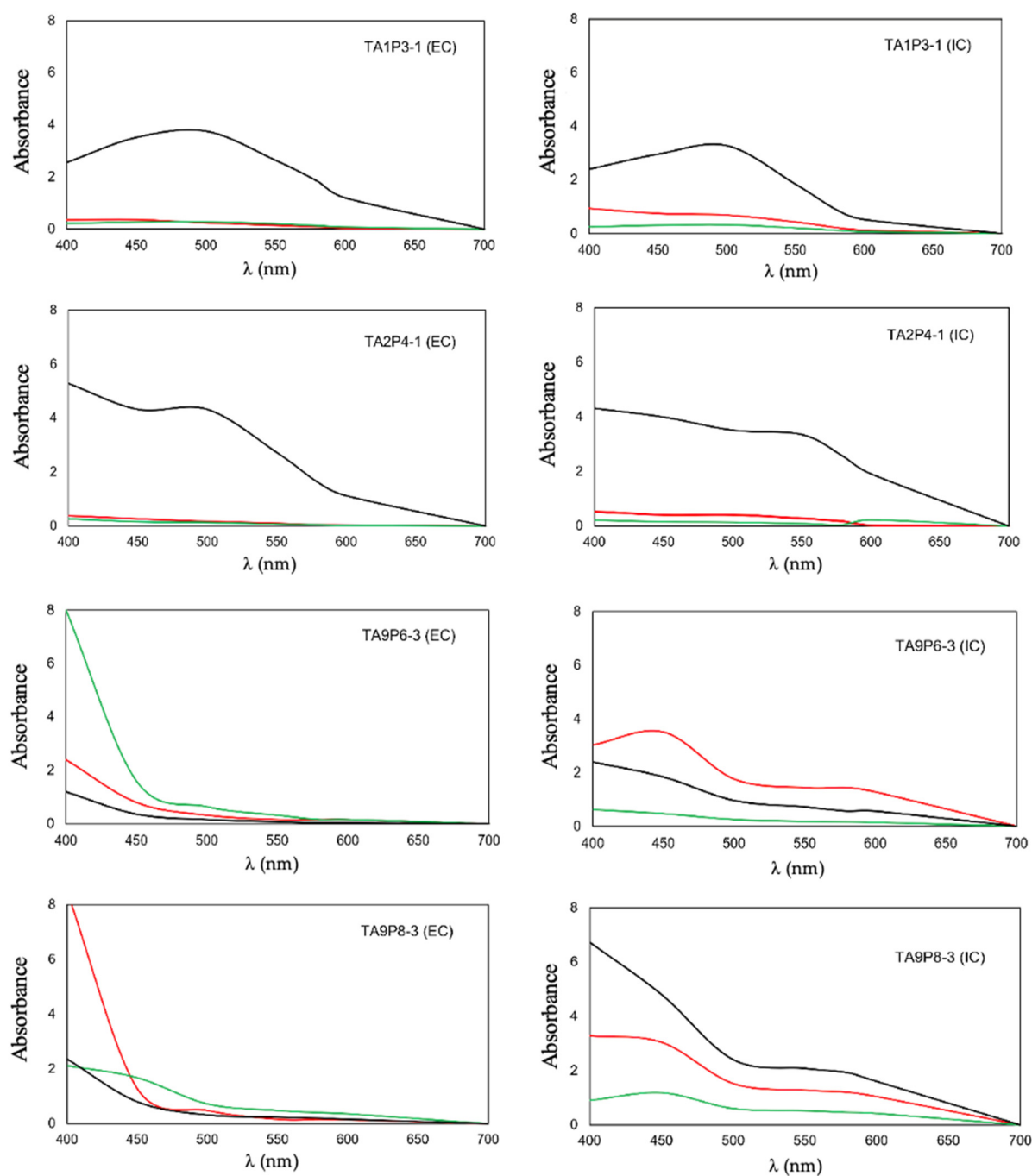


# Supplementary Material



**Figure S1.** Visible spectra (400–700 nm) of extracellular (EC) and intracellular (IC) pigments obtained from aquatic fungal isolates cultivated in different culture media (-BD + YE in red, -ME in green and -YES in black) after 14 days. The spectra correspond to the isolates that showed the highest maximum absorbance values.