

Supplementary Materials

MYB Transcriptional Factors Affects Upstream and Downstream MEP Pathway and Triterpenoid Biosynthesis in *Chlamydomonas reinhardtii*

Muhammad Anwar^{1,2}, Jingkai Wang ¹, Jiancheng Li¹, Muhammad Mohsin Altaf², Zhangli Hu^{1*}

¹Shenzhen Engineering Laboratory for Marine Algal Biotechnology, Guangdong Engineering Research Center for Marine Algal Biotechnology, Longhua, Innovation of Institute for Biotechnology, College of Life Sciences and Oceanography, Shenzhen University, Shenzhen 518060, P. R China

² School of Tropical Agriculture and Forestry, Hainan University, Haikou, P.R. China

Corresponding Author: Zhangli Hu (huzl@szu.edu.cn)

Phone:+86 755 26557244, Fax: +86 755 26534274

Figures S1:

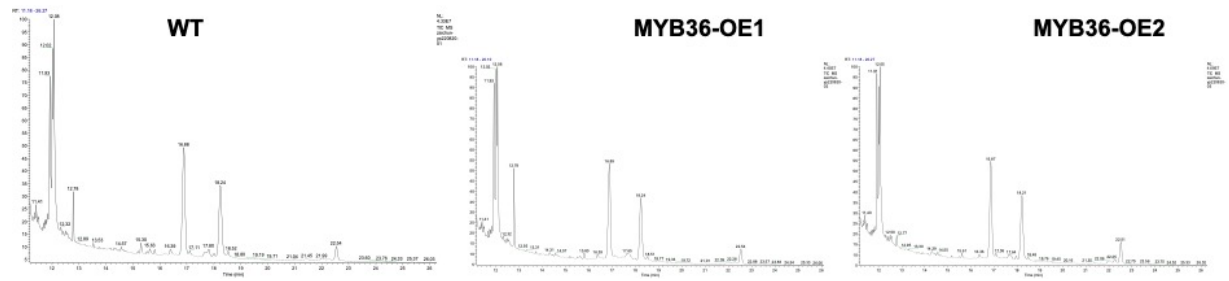


Figure S1. Concentration of Squalene in WT type (CC124) and MYB36 Overexpression lines (MYB36-OE1 and OE2). The peak with 15.61 retention time is the squalene.