

Supplementary Materials

The effect of low positive temperatures on the formation of secondary metabolites in *Rhodiola quadrifida* (Pall.) Fisch. et C.A. Mey. *in vitro* cultures

Anna Y. Stepanova ^{1,*}, Evgeny A. Gladkov ^{1, *}, Dmitry V. Tereshonok ¹, Renat N. Selimov ², Elisaveta N. Goncharova ² and Aleksandra I. Solov'eva ¹

¹ K.A. Timiryazev Institute of Plant Physiology Russian Academy of Sciences, 127276 Moscow, Russia

² Bioanalytical laboratory OOO "NVC Agrovetzaschita", Moscow, 129329, Russia

* Correspondence: Anna Y. Stepanova, step_ann@mail.ru; Tel.: +7(499) 678-53-97 (A.Y.S.) ;
Evgeny A. Gladkov, gladkovu@mail.ru

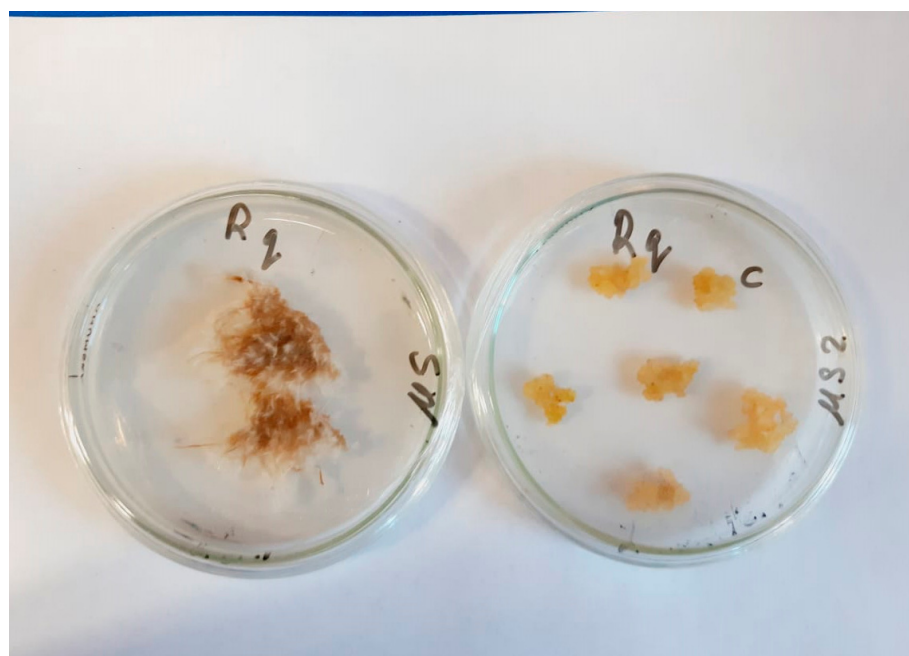


Figure S1 In vitro cultures of *Rhodiola quadrifida*: hairy roots (left), calli (right)

Table S1. Parameters of analytical method.

Parameter	Salidroside	Rosavin	Rosarin	Rosin	Tyrosol
Linear range, ng/ml	1-200	1-200	1-200	1-100	1-50
LoD, ng/ml	0,1	0,2	0,2	0,2	0,2
LoQ, ng/ml	0,3	0,5	0,6	0,7	0,8
Recovery (\pm SD), %	94 \pm 5	93 \pm 8	87 \pm 9	90 \pm 9	83 \pm 9
Matrix effect (\pm SD), %	100 \pm 9	94 \pm 10	81 \pm 9	87 \pm 6	75 \pm 6
Within-run precision, low level (1 ng/ml), CV, %	10-11	6-14	4-13	9-14	7-11
Between-run precision, low level (1 ng/ml), CV, %	12	12	12	11	9

Within-run precision, high level (50 ng/ml), CV, %	4-10	7-12	4-9	10-12	5-11
Between-run precision, high level (50 ng/ml), CV, %	9	11	13	14	11
Long-term stability at -20 °C, days	≥30	≥30	≥30	≥30	≥30
Autosampler stability at 4 °C, h	≥24	≥24	≥24	≥24	≥12