

Supplementary Materials

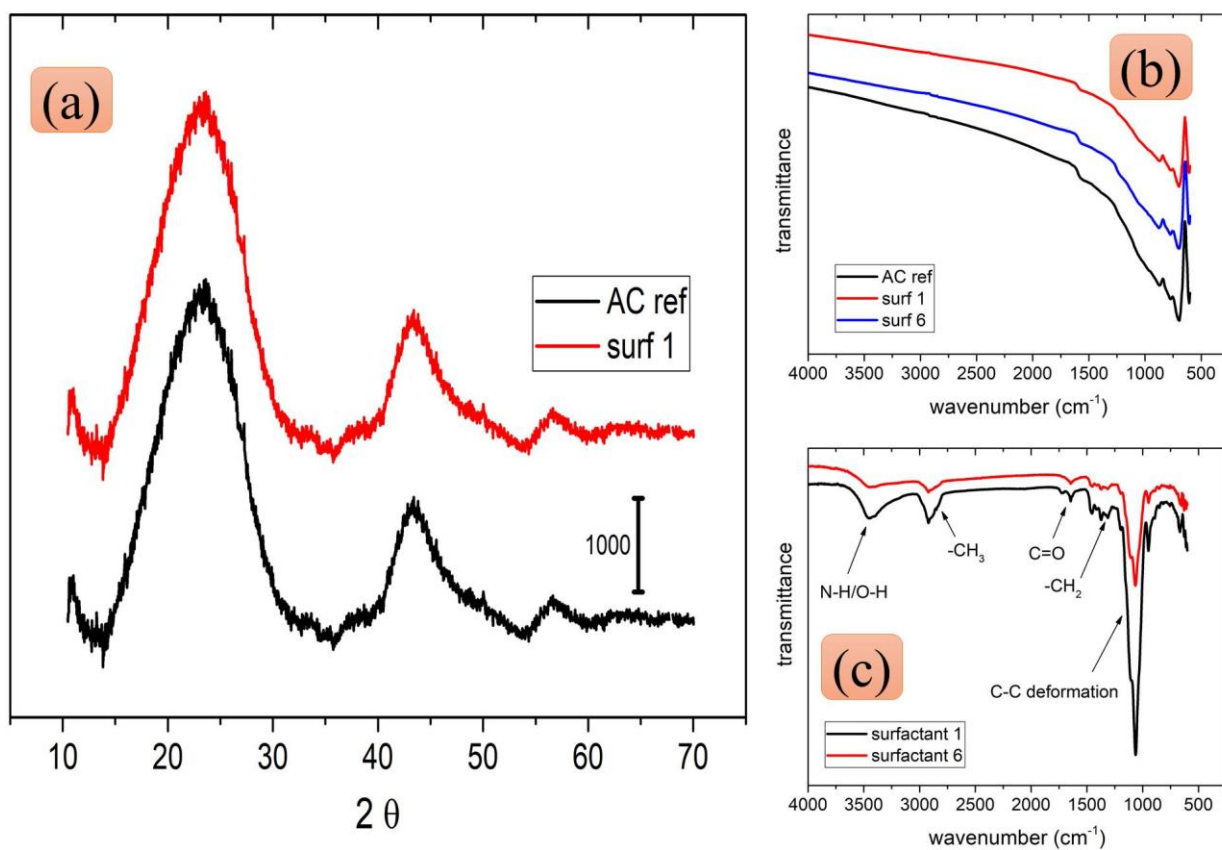


Figure S1. Representative (a) XRD; FTIR spectra of (b) raw and surfactant modified RAC and (c) surfactant 1 and surfactant 6.

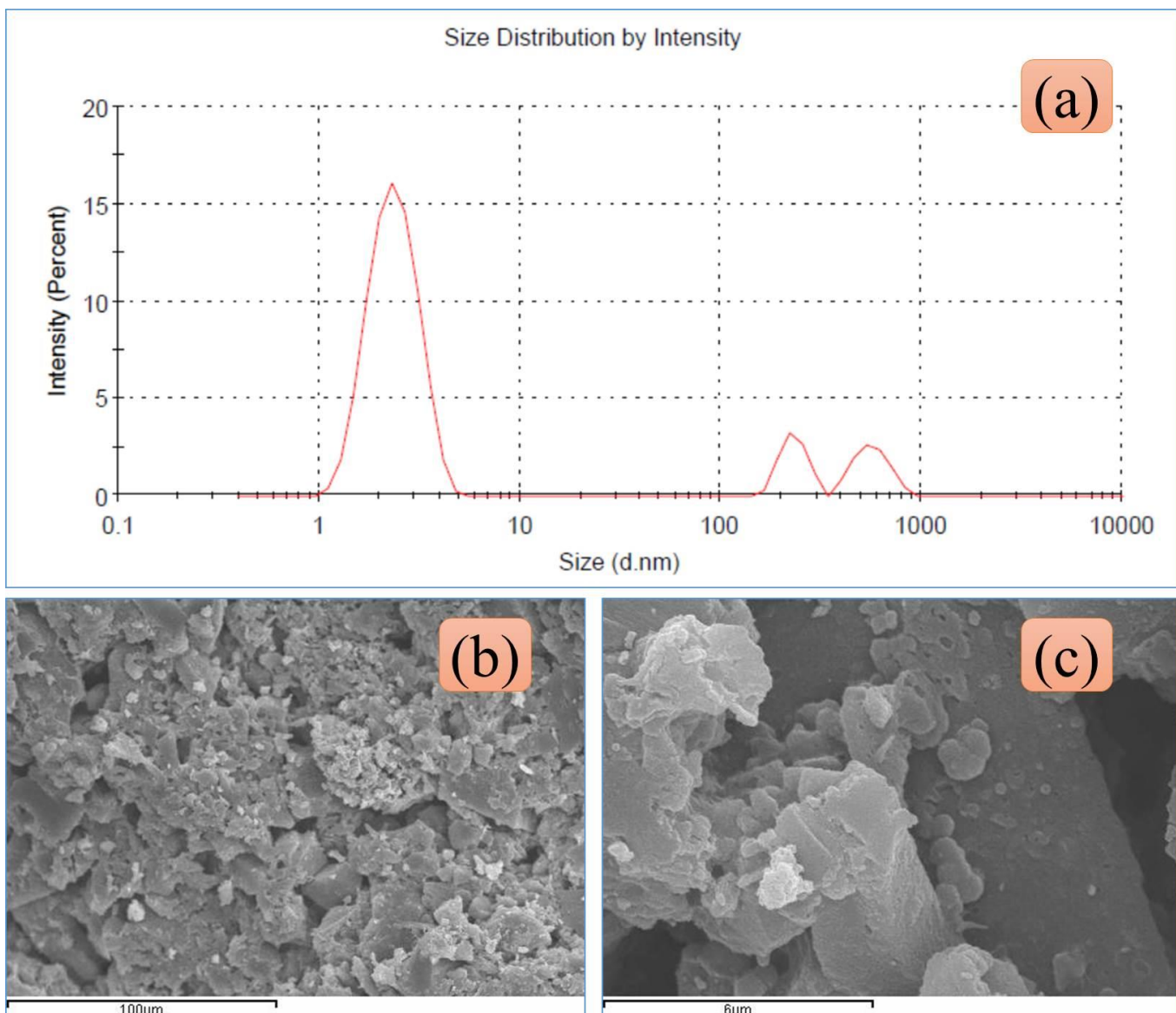


Figure S2. (a) Representative size distribution of surfactant 1 solution (diluted by 10 times and in the end 1 minute of measurement) determined by the dynamic light scattering; and the (b) low (200×) and (c) high magnification (2000×) SEM images of surf 1 sample.

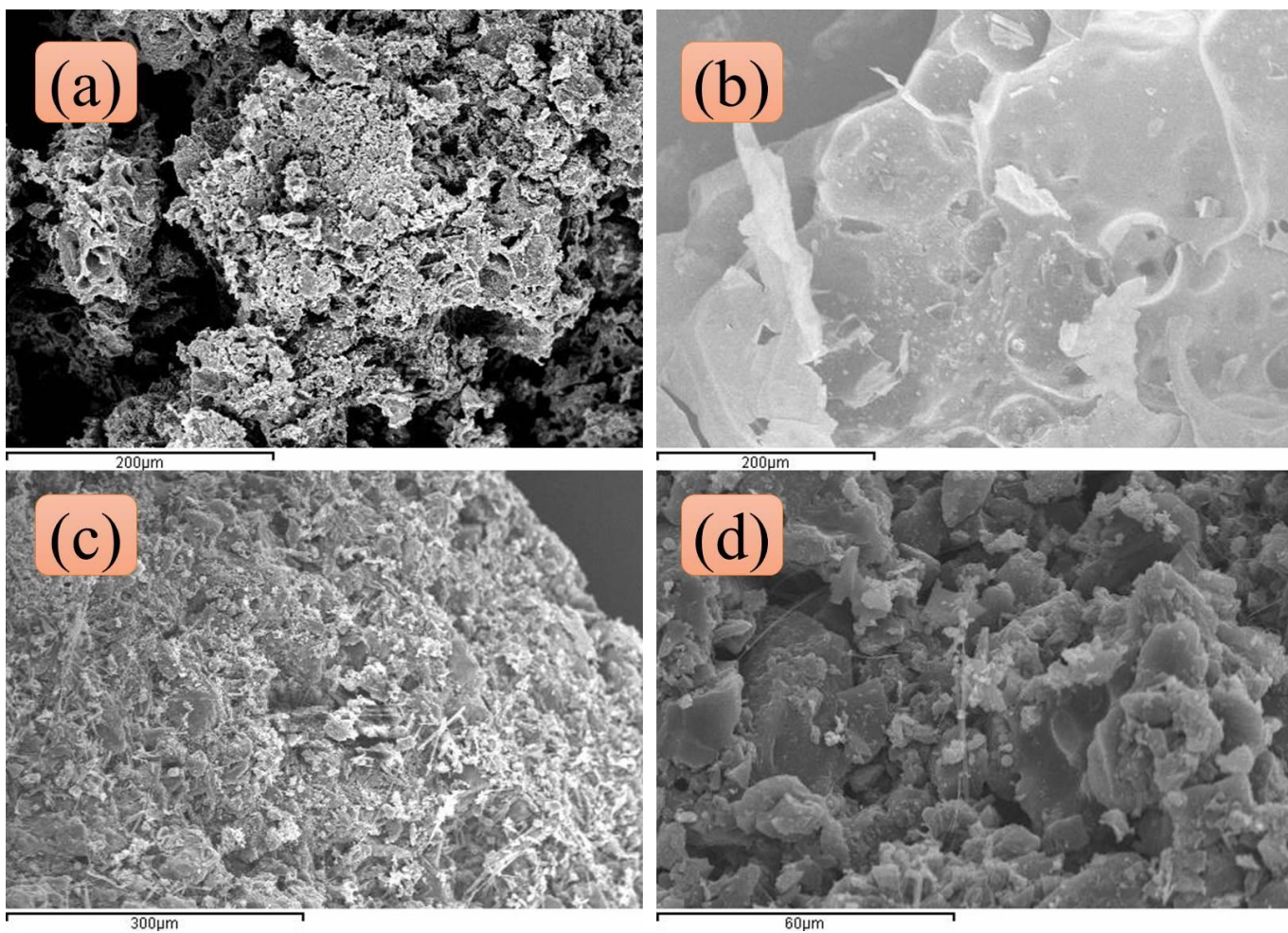


Figure S3. Representative SEM images of carbonized (a) methyl cellulose (b) matrix of methyl cellulose and surfactant 2 and the (c) low (200×) and (d) high magnification (2000×) of gel 2 sample.