

Supporting material

Nanocarrier of α -Tocopheryl Succinate based on a Copolymer Derivative of (4,7-dichloroquinolin-2-yl)methanol and its Cytotoxicity against a Breast Cancer Cell line

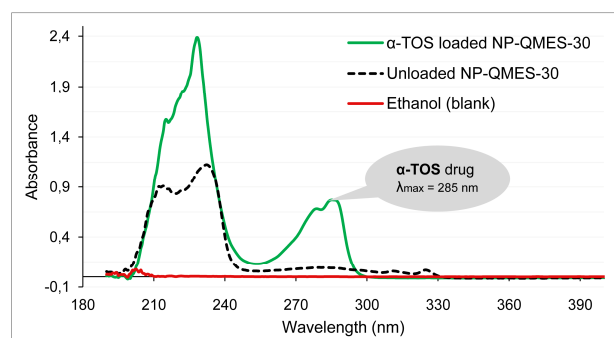


Figure S1. UV spectra of: α -TOS loaded and unloaded NP-QMES-30.

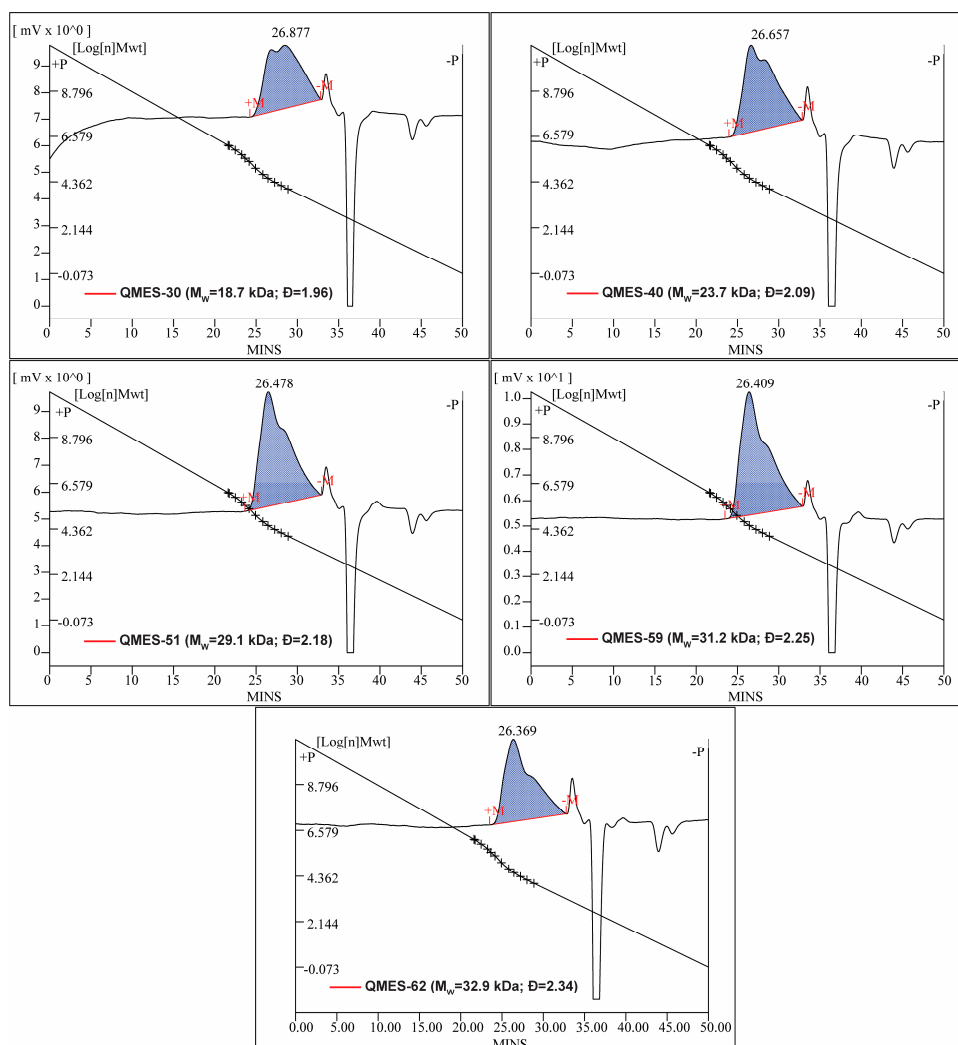


Figure S2. GPC chromatograms of the synthesized poly (QMES-co-VP) copolymers.

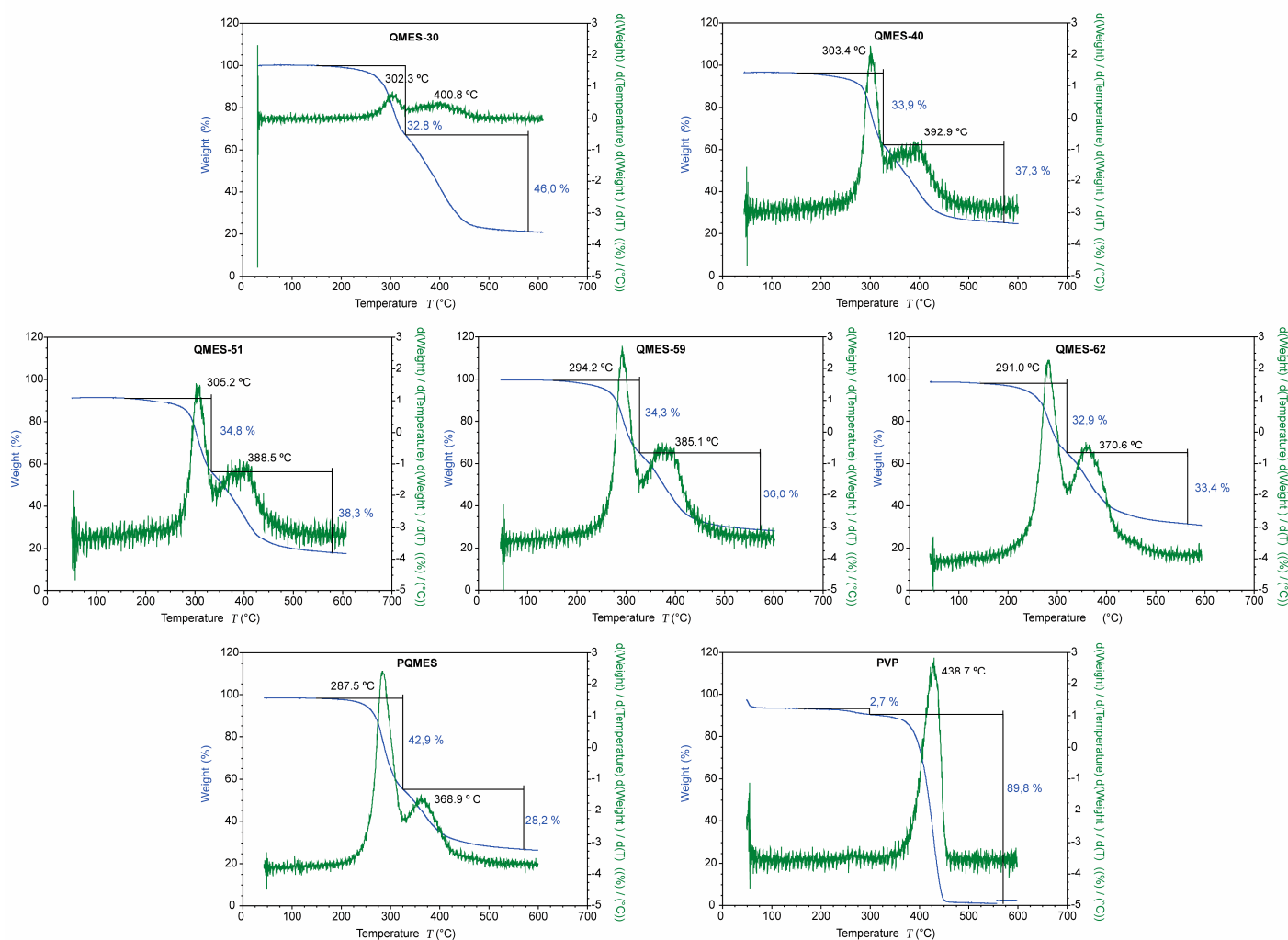


Figure S3. Results of thermogravimetric analysis (TGA) of PVP, PQMES and QMES-VP copolymers.

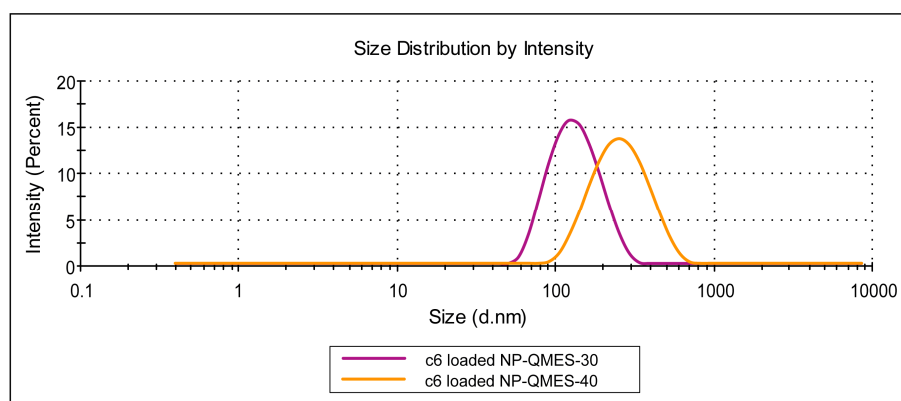


Figure S4. DLS size distribution curves of: c6 loaded NP-QMES-30 ($D_h = 124.4 \pm 2.7$; PDI = 0.120) and c6 loaded NP-QMES-40 ($D_h = 247.3 \pm 2.7$; PDI = 0.191).