

# High-Content *Aloe-vera*-Based Hydrogels: Physicochemical and Pharmaceutical Properties

Mariana Chelu <sup>1,†</sup>, Monica Popa <sup>1,\*</sup>, Emma Adriana Ozon <sup>2,†</sup>, Jeanina Pandelescu <sup>1</sup>, Mihai Anastasescu <sup>1</sup>, Vasile Adrian Surdu <sup>3</sup>, Jose Calderon Moreno <sup>1,\*</sup> and Adina Magdalena Musuc <sup>1,\*</sup>

<sup>1</sup> “Ilie Murgulescu” Institute of Physical Chemistry, 202 Spl. Independentei, 060021 Bucharest, Romania

<sup>2</sup> Department of Pharmaceutical Technology and Biopharmacy, Faculty of Pharmacy, Carol Davila University of Medicine and Pharmacy, 6 Traian Vuia Street, 020945 Bucharest, Romania

<sup>3</sup> Department of Science and Engineering of Oxide Materials and Nanomaterials, Faculty of Applied Chemistry and Materials Science University Politehnica of Bucharest, 060042 Bucharest, Romania

\* Correspondence: [pmonica@icf.ro](mailto:pmonica@icf.ro) (M.P.); [calderon@icf.ro](mailto:calderon@icf.ro) (J.C.M.); [amusuc@icf.ro](mailto:amusuc@icf.ro) (A.M.M.)

† These authors contributed equally to this work.

**Citation:** Chelu, M.; Popa, M.; Ozon, E.A.; Cusu, J.P.; Anastasescu, M.; Surdu, V.A.; Calderon Moreno, J.; Musuc, A.M. High-Content *Aloe-vera*-Based Hydrogels: Physicochemical and Pharmaceutical Properties. *Polymers* **2023**, *15*, x. <https://doi.org/10.3390/xxxxx>

Academic Editor(s): Donatella Duraccio, Maria Giulia Faga, Giovanna Gomez D'Ayala

Received: 7 February 2023

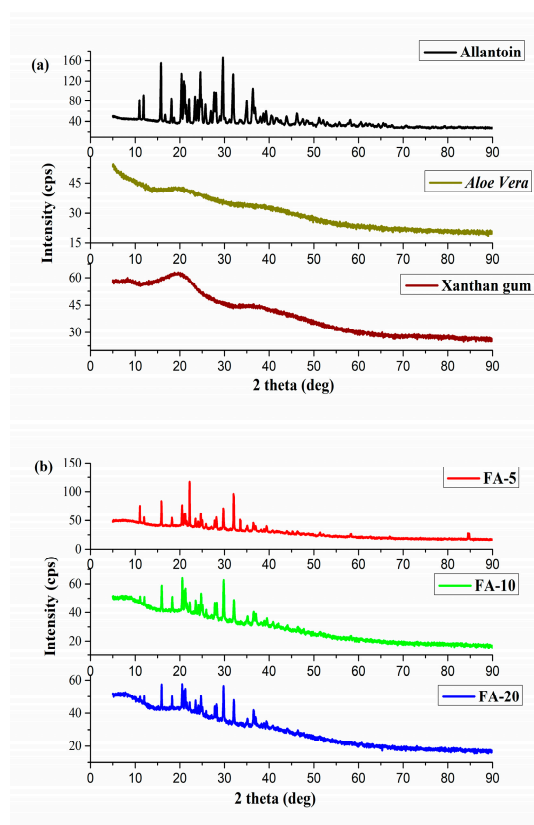
Revised: 28 February 2023

Accepted: 3 March 2023

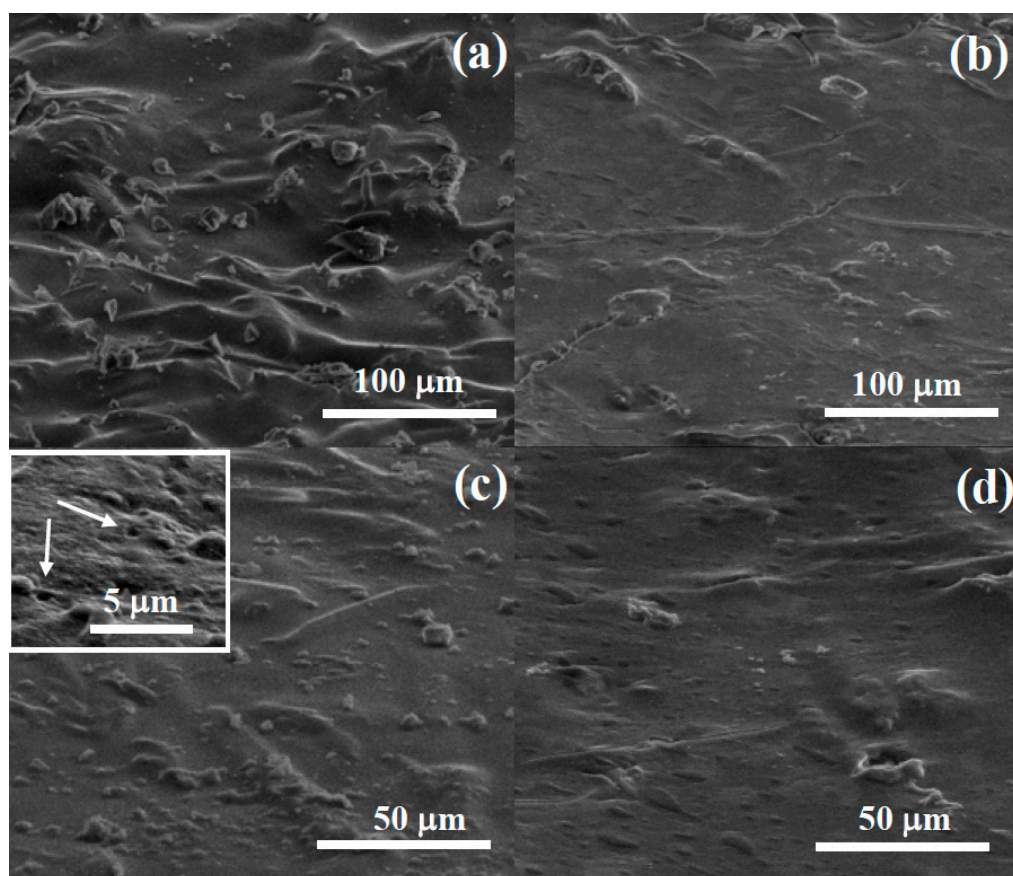
Published: date



**Copyright:** © 2023 by the authors. Submitted for possible open access publication under the terms and conditions of the Creative Commons Attribution (CC BY) license (<https://creativecommons.org/licenses/by/4.0/>).



**Figure S1.** XRD spectra of (a) raw materials (allantoin, *Aloe vera*, xanthan gum) and (b) *Aloe vera* based hydrogels (FA-5; FA-10; FA-20).



**Figure S2.** SEM images of (a, c) FA-5 and (b, d) FA-20 at different magnifications: (a-b) x1000; (c-d) x2000; and x10000 (inset in c).