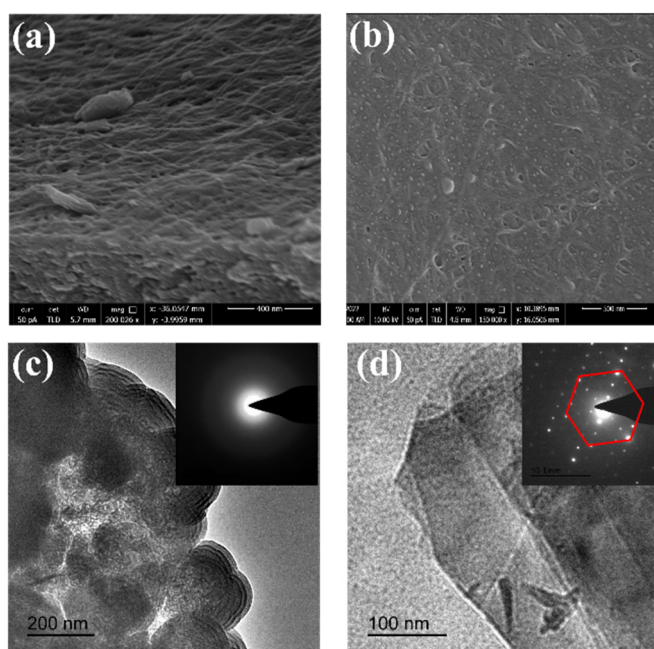


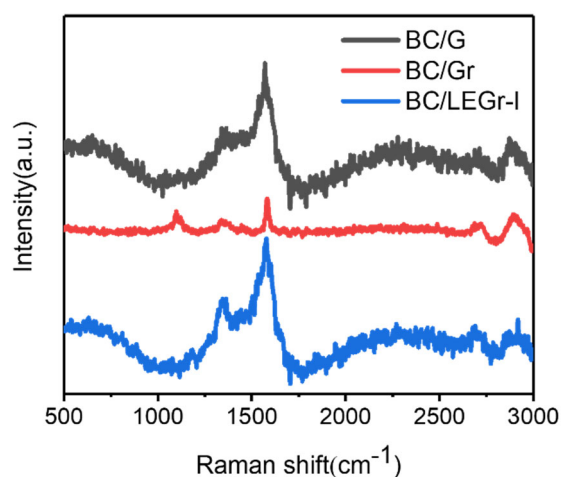
# Graphene composite via bacterial cellulose assisted liquid phase exfoliation for sodium-ion batteries

## Supplementary Information

### Characterization

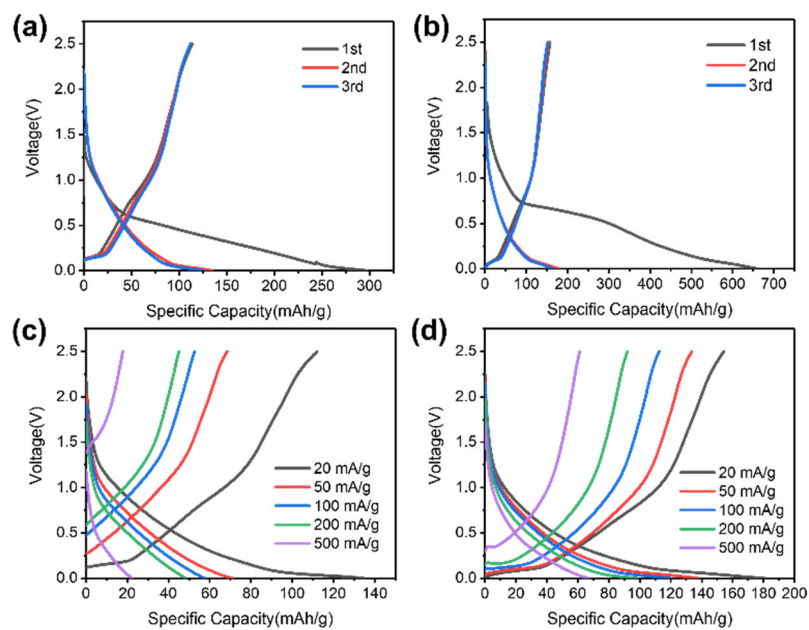


**Figure S1.** SEM images of (a) CBC/G and (b) CBC/Gr; TEM and SEAD images of (c) CBC/G and (d) CBC/Gr (region displaying the hexagonal lattice and corresponding SAED pattern).

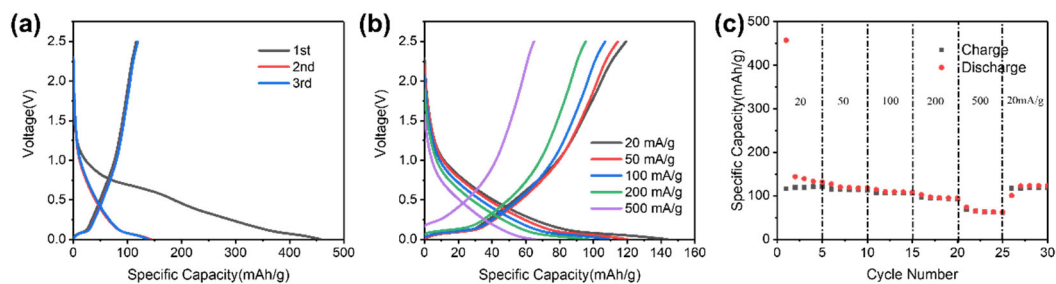


**Figure S2.** Raman-spectroscopies of BC/G, BC/Gr and BC/LEGr-I.

### Electrochemical Measurements



**Figure S3.** Galvanostatic charge/discharge curves for first three cycles at 0.02 A g<sup>-1</sup> of (a)CBC/G and (b)CBC/Gr. Galvanostatic charge/discharge curves at different rates of (c) CBC/G and (d)CBC/Gr.



**Figure S4.** Galvanostatic charge/discharge curves of CBC/LEGr (a) for first three cycles at 0.02 A g<sup>-1</sup> (b) at different rates and (c) rate capacity at different rates.