

Supplementary Material: Gelation and Self-Healing Behavior of Chitosan-Catechol Hydrogel

Yu-Ting Lan, Qian-Pu Cheng, Junpeng Xu, Shih-Ho Lin, Jhih-Min Lin, Shan-hui Hsu

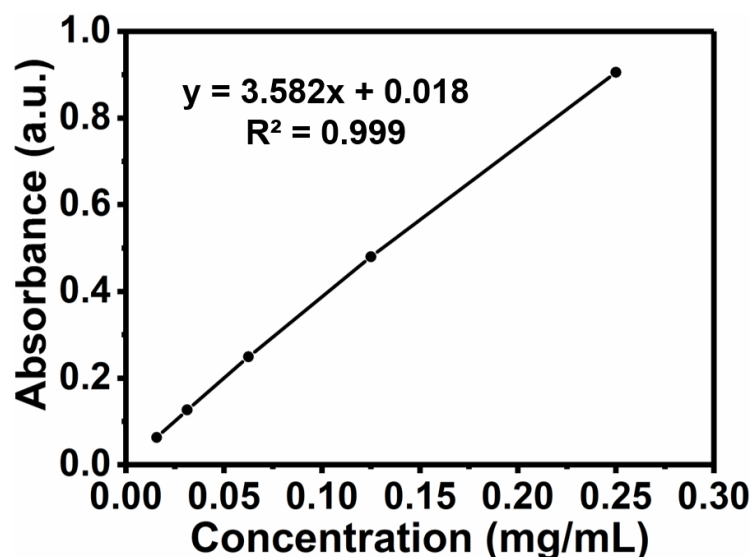


Figure S1. A calibration curve generated from the standard hydrocaffeic acid solutions at the absorption intensity of 280 nm. The coefficient of determination (R^2) was 0.999.

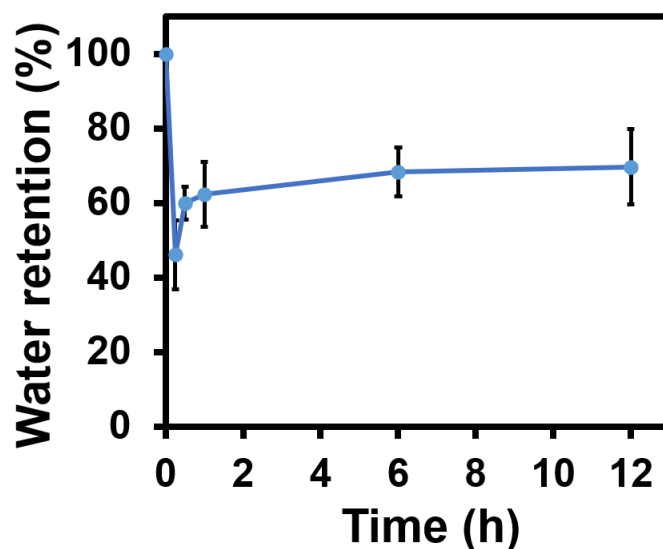


Figure S2. Deswelling behavior of the CC hydrogel in culture medium (low-glucose DMEM) at 25 °C. Compared to Figure 7, reswelling occurred after 15 min and the equilibrated water content was about 69.7%.

Video S1. Compressibility and fast shape recovery. The CC scaffold (CCs₂ as an example) can endure compression and expel water once being pressed, and can quickly recover to the original shape and take the water back after release of the compression force.