

Supporting Information

Wearable Natural Rubber Latex Gloves with Curcumin for Torn Glove Detection in Clinical Settings

Norfatirah Muhamad Sarih¹, Nuur Syuhada Dzulkafly¹, Simon Maher² and Azura A. Rashid^{1,*}

¹ School of Materials and Mineral Resources Engineering, Universiti Sains Malaysia, Engineering Campus, Nibong Tebal 14300, Penang, Malaysia; fatirahsarih@usm.my (N.M.S.); dn.syuhada@student.usm.my (N.S.D.)

² Department of Electrical Engineering and Electronics, University of Liverpool, Liverpool L69 3GJ, UK; s.maher@liverpool.ac.uk (S.M.)

* Correspondence: srazura@usm.my (A.A.R.)

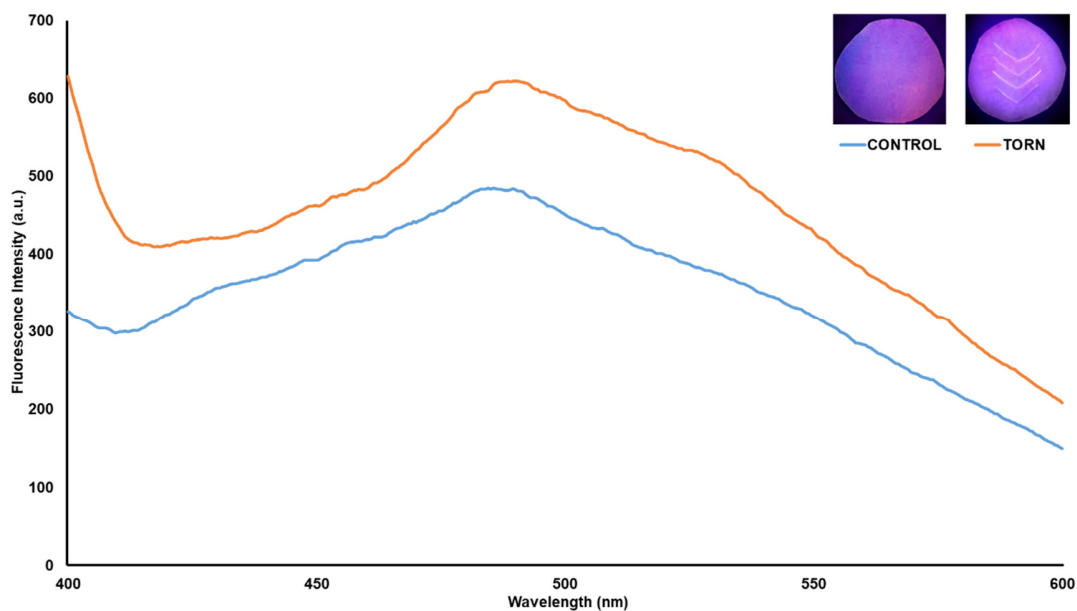


Figure S1. Fluorescence emission spectrum from LC1 sample. (inset: NRL-Cur films under UV lamp at 380 nm)

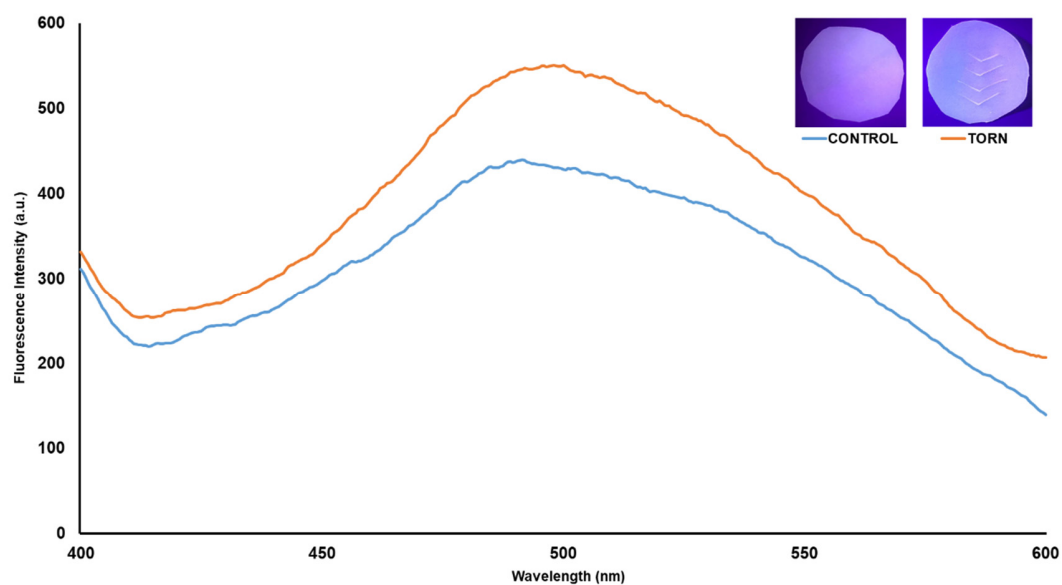


Figure S2. Fluorescence emission spectrum from LC2 sample.(inset: LC films under UV lamp at 380 nm)

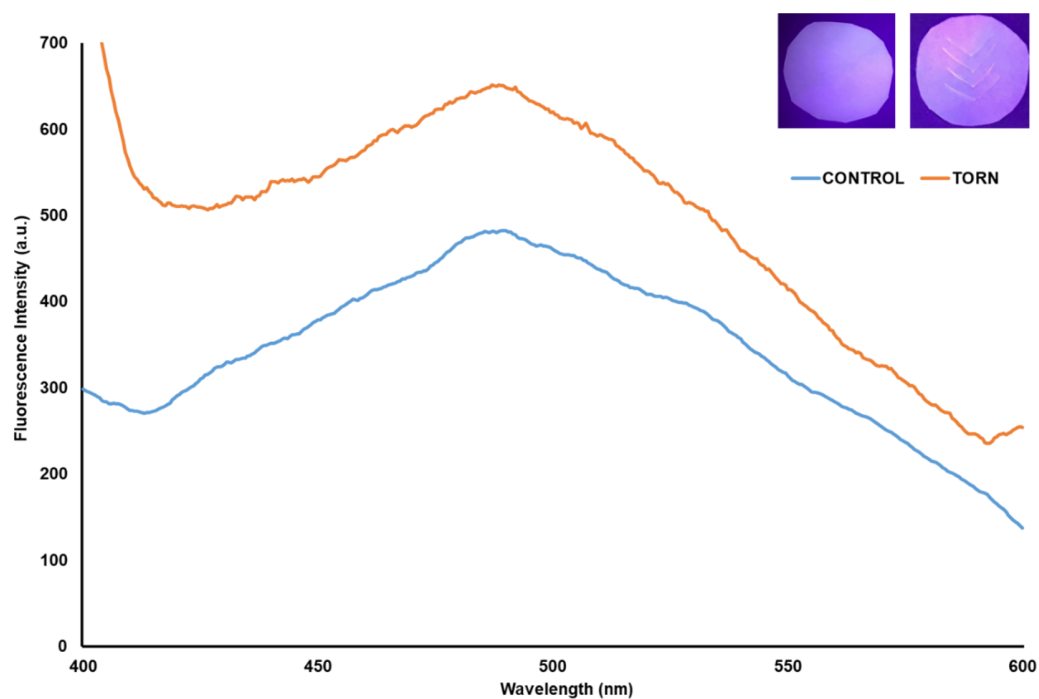


Figure S3. Fluorescence emission spectrum from LC3 sample. (inset: NRL-Cur films under UV lamp at 380 nm)

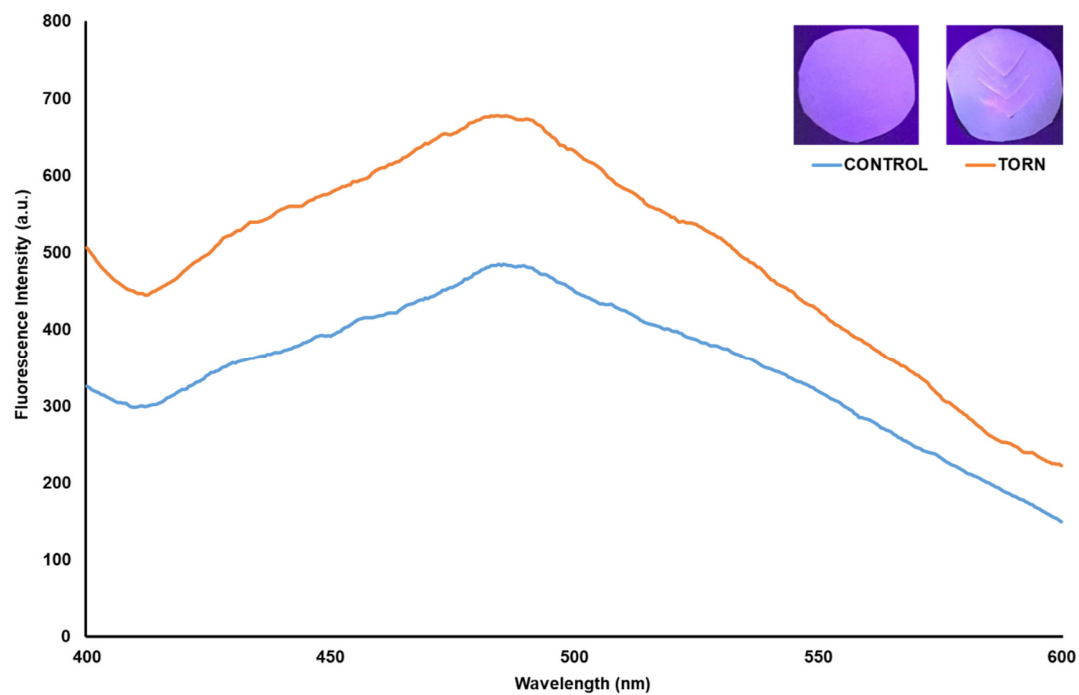


Figure S4. Fluorescence emission from LC4 sample. (inset: NRL-Cur films under UV lamp at 380 nm)

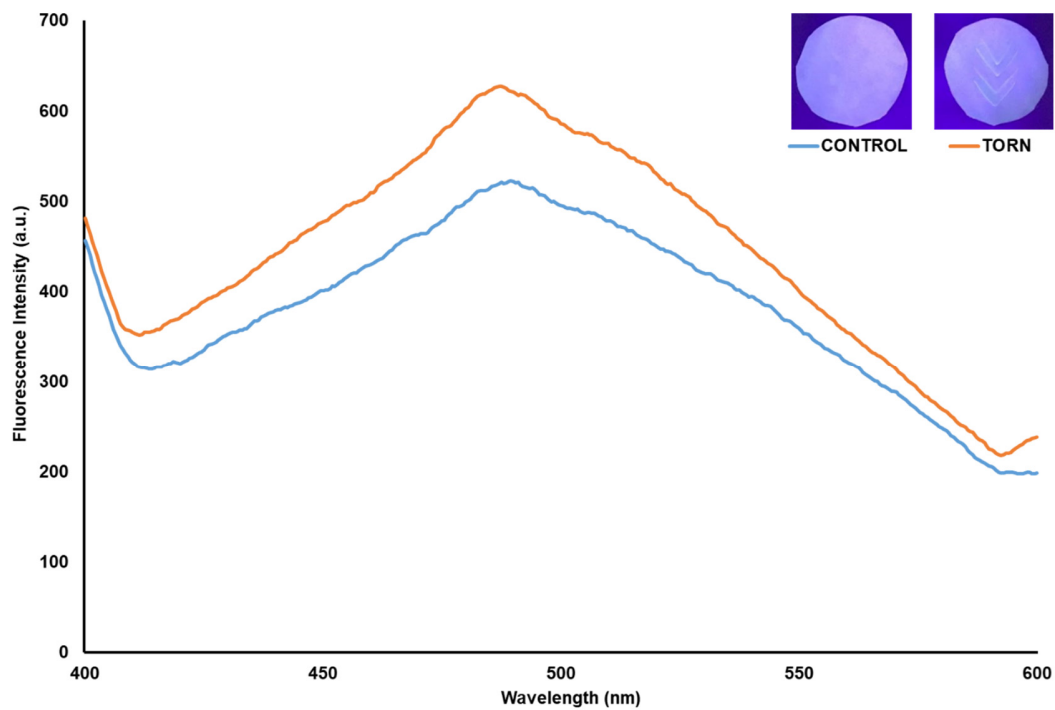


Figure S5. Fluorescence emission spectrum from LC5 sample. (inset: NRL-Cur films under UV lamp at 380 nm)

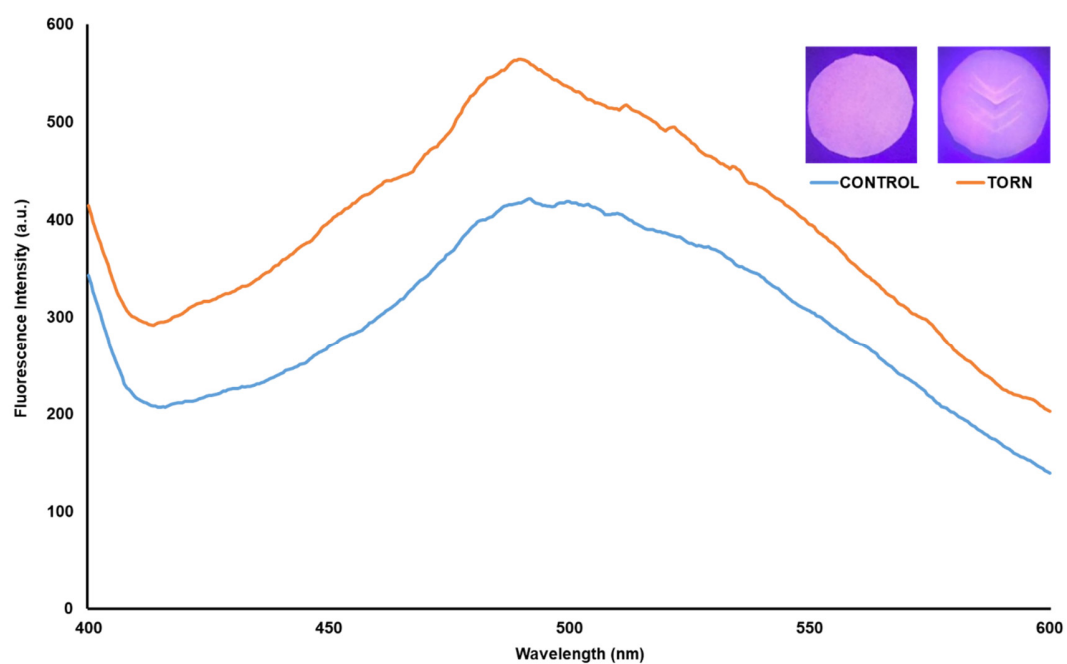


Figure S6. Fluorescence emission spectrum from LC6 sample. (inset: NRL-Cur films under UV lamp at 380 nm)

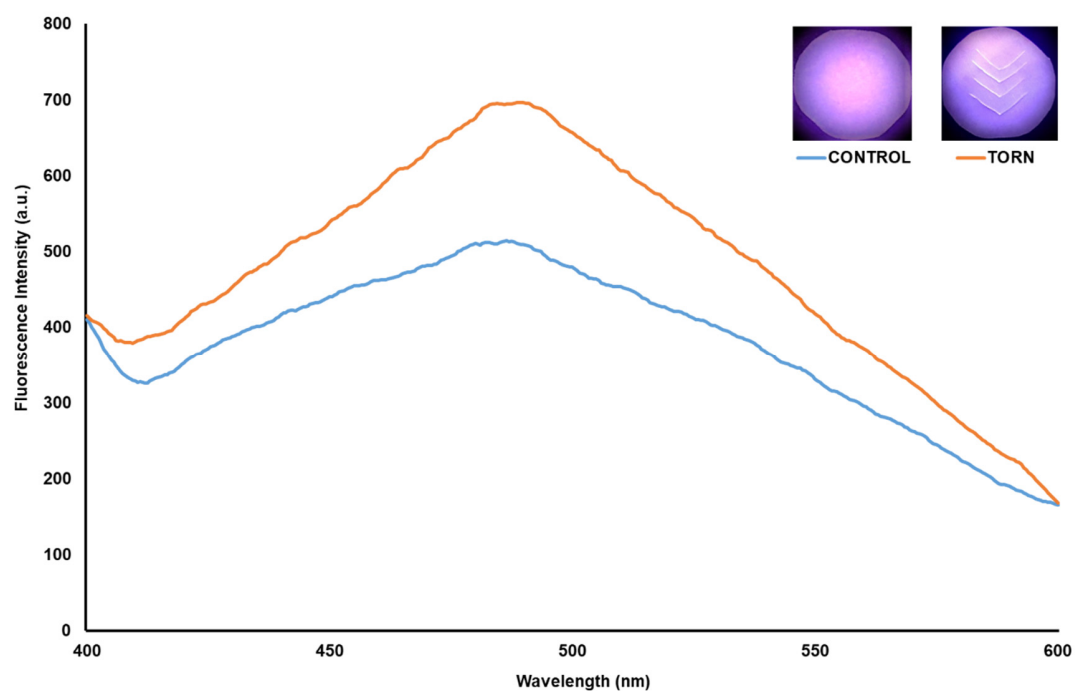


Figure S7. Fluorescence emission spectrum from LC7 sample. (inset: NRL-Cur films under UV lamp at 380 nm)

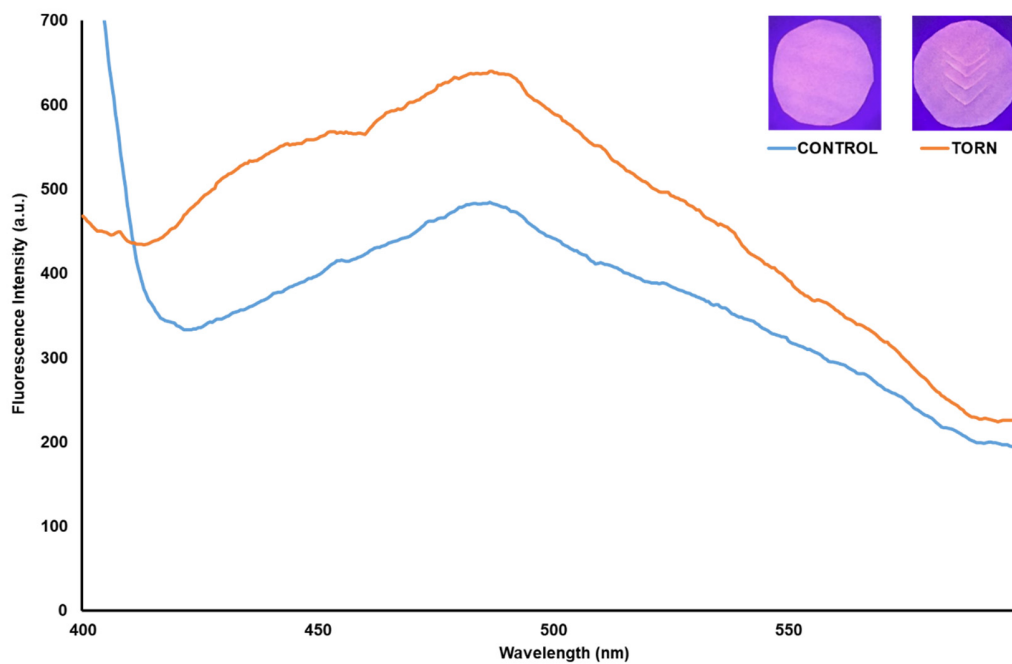


Figure S8. Fluorescence emission spectrum from LC8 sample. (inset: NRL-Cur films under UV lamp at 380 nm)

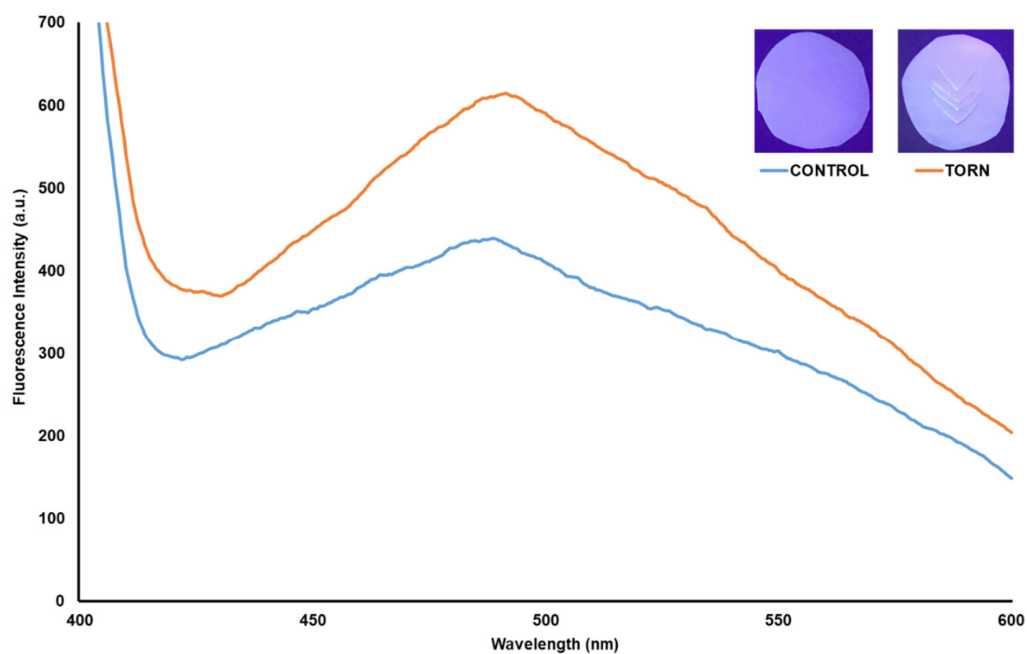


Figure S9. Fluorescence emission spectrum from LC9 sample. (inset: NRL-Cur films under UV lamp at 380 nm)

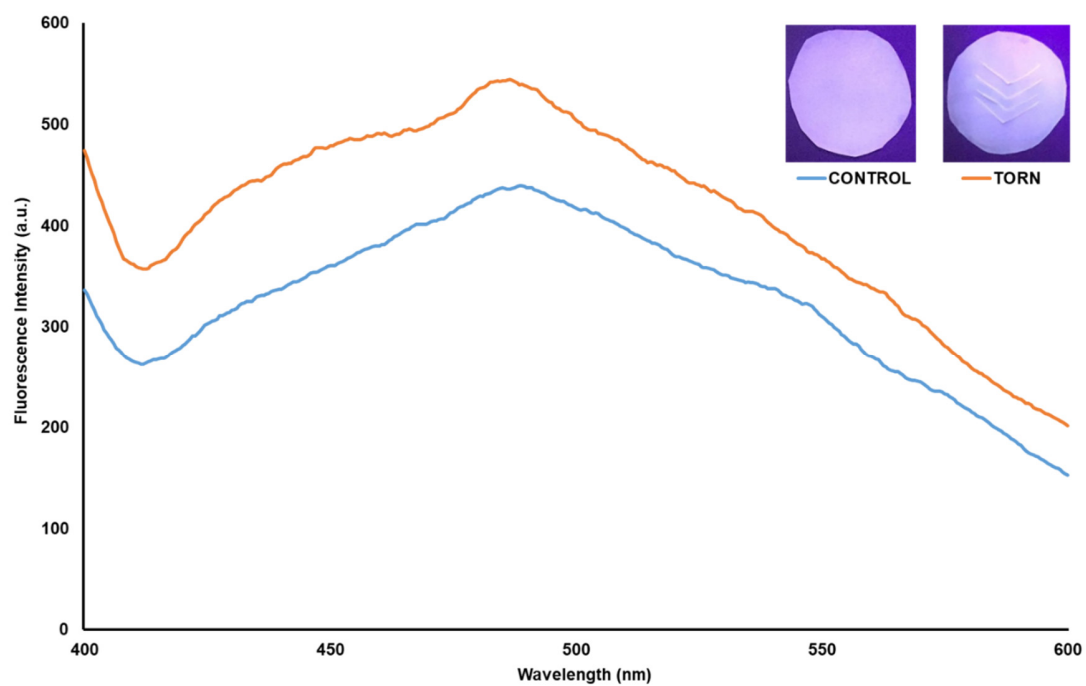


Figure S10. Fluorescence emission spectrum from LC10 sample. (inset: NRL-Cur films under UV lamp at 380 nm)