

## Supplemental Information

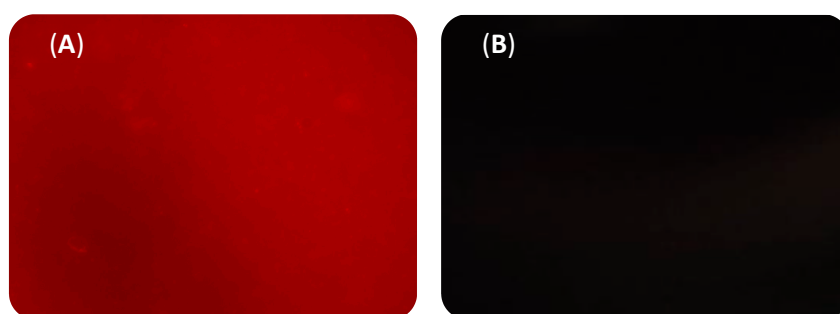
### Characterization of the Thermostable Biosurfactant Produced by *Burkholderia thailandensis* DSM 13276

Cátia Gil <sup>1,2</sup>, Ana Teresa Rebocho <sup>1,2</sup>, Asiyah Esmail <sup>1,2</sup>, Chantal Sevrin <sup>3</sup>, Christian Grandfils <sup>3</sup>, Cristiana A. V. Torres <sup>1,2</sup>, Maria A. M. Reis <sup>1,2</sup>, Filomena Freitas <sup>1,2</sup>

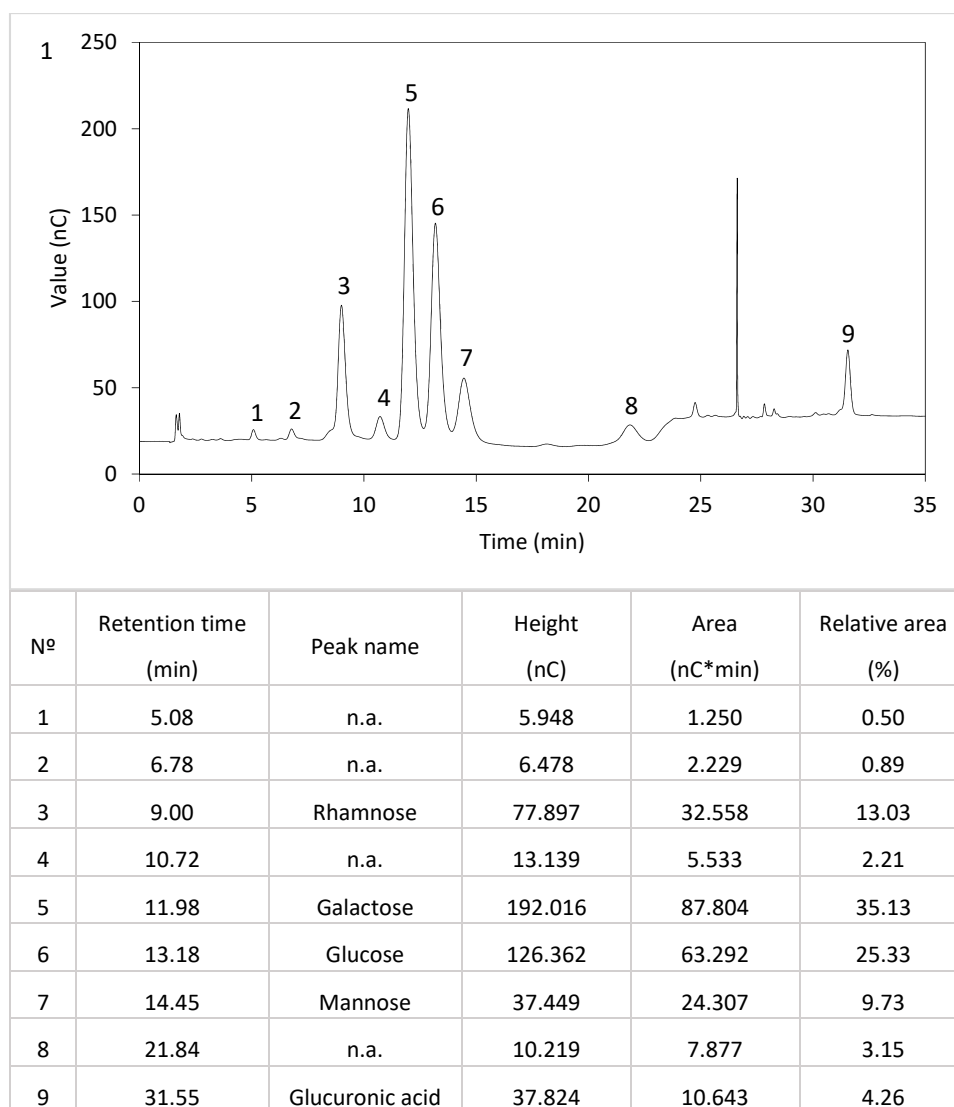
<sup>1</sup> Laboratory i4HB—Institute for Health and Bioeconomy, School of Science and Technology, NOVA University Lisbon, Caparica, Portugal

<sup>2</sup> UCIBIO—Applied Molecular Biosciences Unit, Department of Chemistry, School of Science and Technology, NOVA University Lisbon, Caparica, Portugal

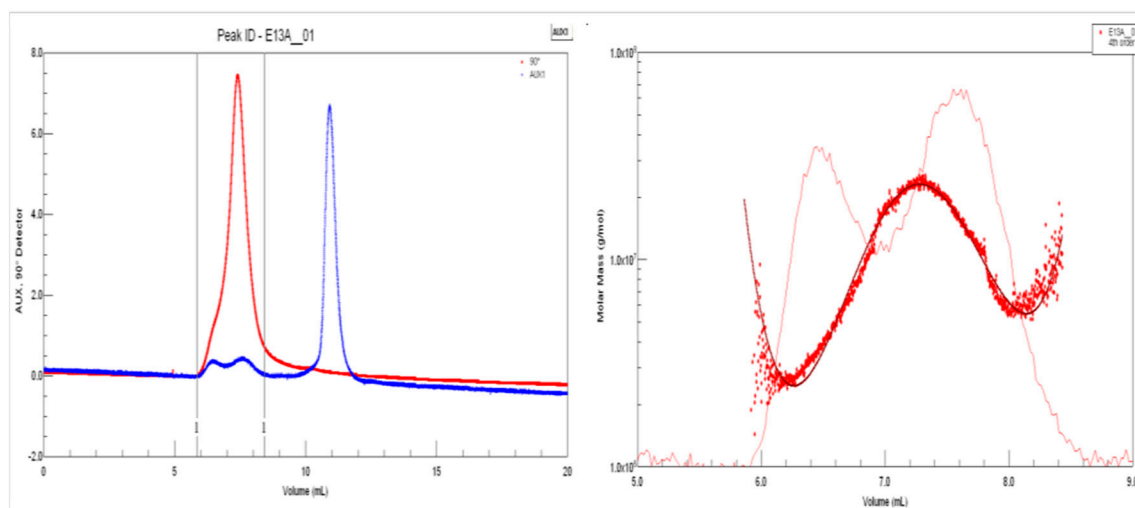
<sup>3</sup> CEIB—Interfaculty Research Centre of Biomaterials, University of Liège, Liège, Belgium



**Figure S1.** Fluorescence micrographs of (A) the biosurfactant solution (10 g/L) and (B) distilled water stained with the cationic dye Nile blue at 1000x magnification.

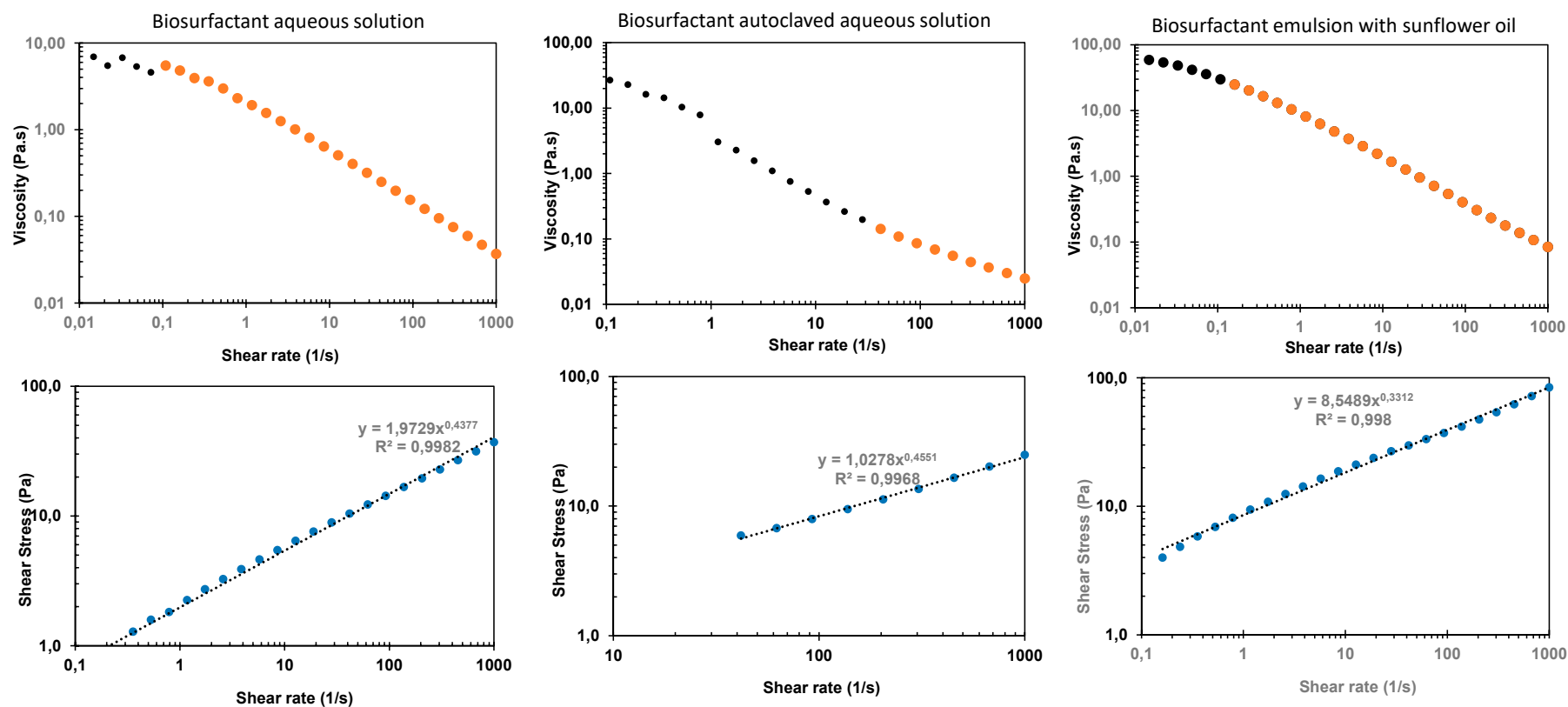


**Figure S2.** Example chromatogram and data for the HPLC analysis of the biosurfactant hydrolysate.



Batch	Mn	Mw	Mz	IP
R5	6.927e+06	1.150e+07	1.578e+07	1.66

**Figure S3.** Example data for the SEC-MALS analysis of the biosurfactant.



Legend: (●) region used for fitting; (●) experimental data; (...) fitting model

**Figure S4.** Data fitting with the power law model for the biosurfactant aqueous solution and for the autoclaved biosurfactant solution.