

Supplementary Materials: Adsorption Kinetics of Polystyrene and Poly(9-anthracenyl methyl methacrylate) onto SiO₂ Surface Measured by the Chip Nano-Calorimetry

Mina Ishihara, Tomoya Watanabe and Takashi Sasaki

S1. Morphology of the prepared films of PAMMA

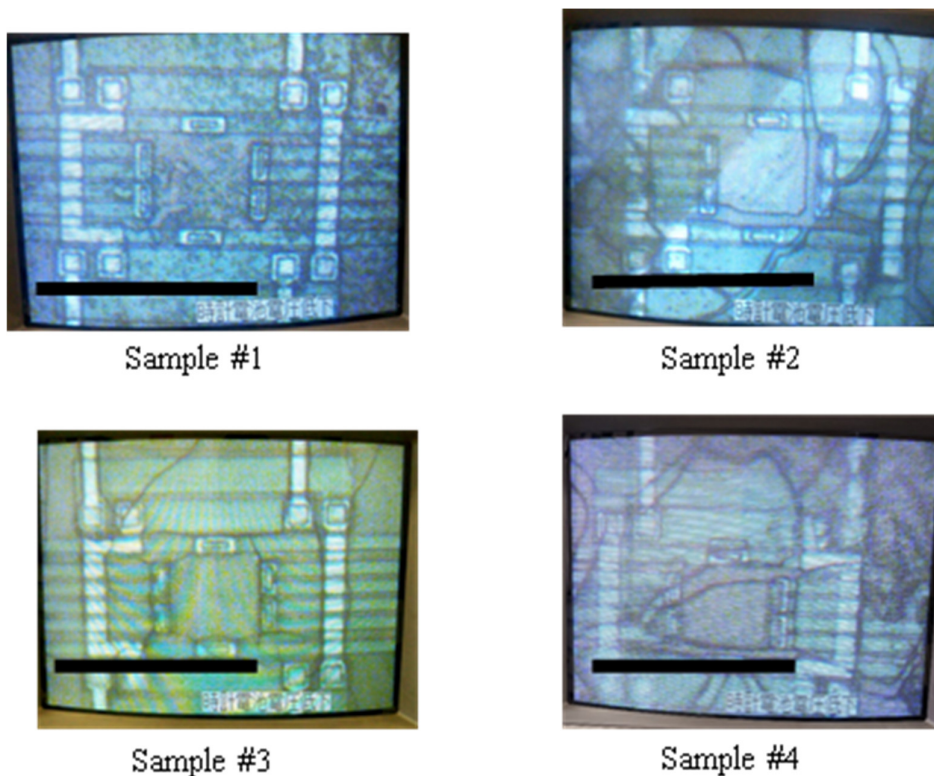


Figure S1. Optical micrographs of typical PAMMA films on the active area of the chip sensor after annealing at 433 K for ca. 10⁶ s. The scale bar indicates 70 μm.