

***Malva parviflora* Leaves Mucilage: An Eco-friendly and Sustainable Biopolymer with Antioxidant Properties**

Supplementary materials

Figure S1: GC/MS chromatograms for standard neutral (A) and acidic (B) monosaccharides

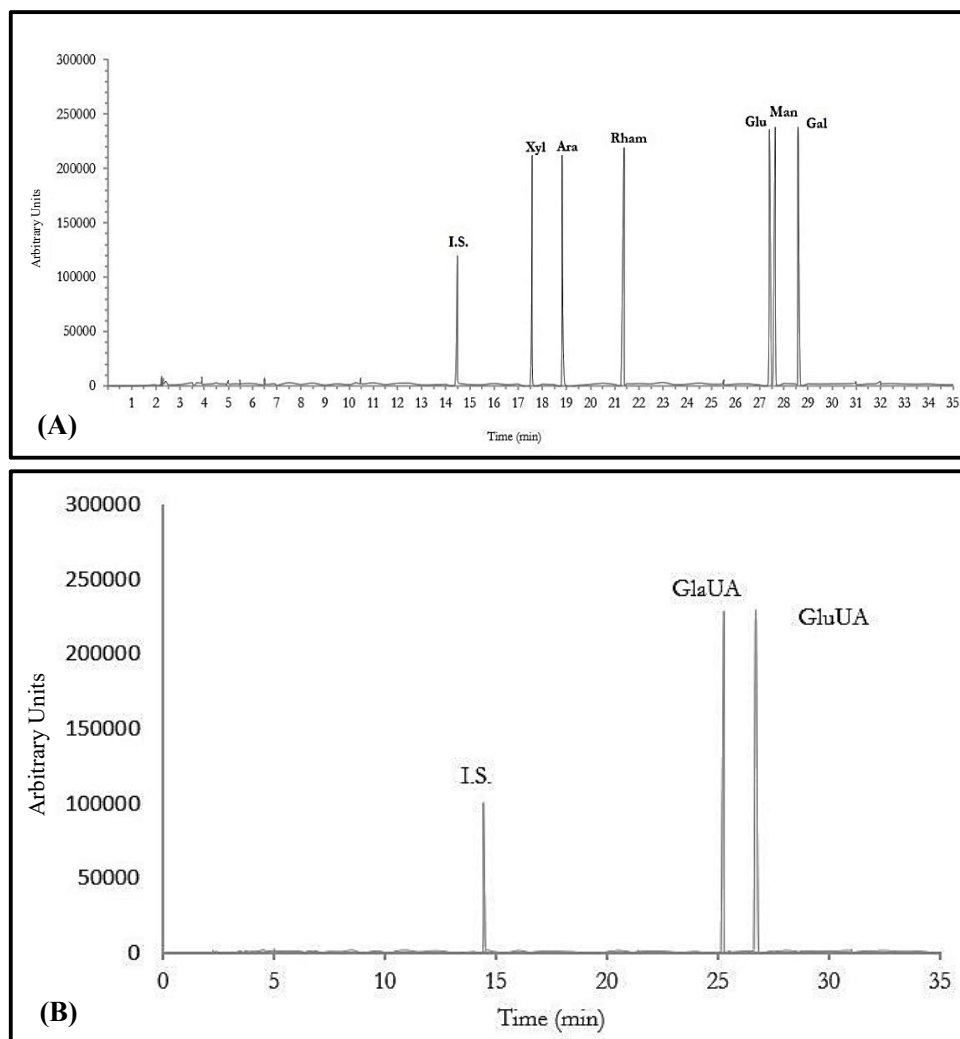


Figure S1: GC/MS chromatograms for standard neutral (A) and acidic (B) monosaccharides