

# Peptide conjugate on multilayer graphene oxide film for the osteogenic differentiation of human Wharton's jelly-derived mesenchymal stem cells

Perng Yang Puah <sup>1,2,3</sup>, Pak Yan Moh <sup>2,\*</sup>, Coswald Stephen Sipaut <sup>4</sup>, Ping Chin Lee <sup>1,5</sup> and Siew Eng How <sup>2,\*</sup>

<sup>1</sup> Programme of Biotechnology, Faculty of Science and Natural Resources, Universiti Malaysia Sabah, Jalan UMS, 88400 Kota Kinabalu, Malaysia; pypuah@hotmail.com (P.Y.P.); leepc@ums.edu.my (P.C.L.)

<sup>2</sup> Programme of Industrial Chemistry, Faculty of Science and Natural Resources, Universiti Malaysia Sabah, Jalan UMS, 88400 Kota Kinabalu, Malaysia; pymoh@ums.edu.my

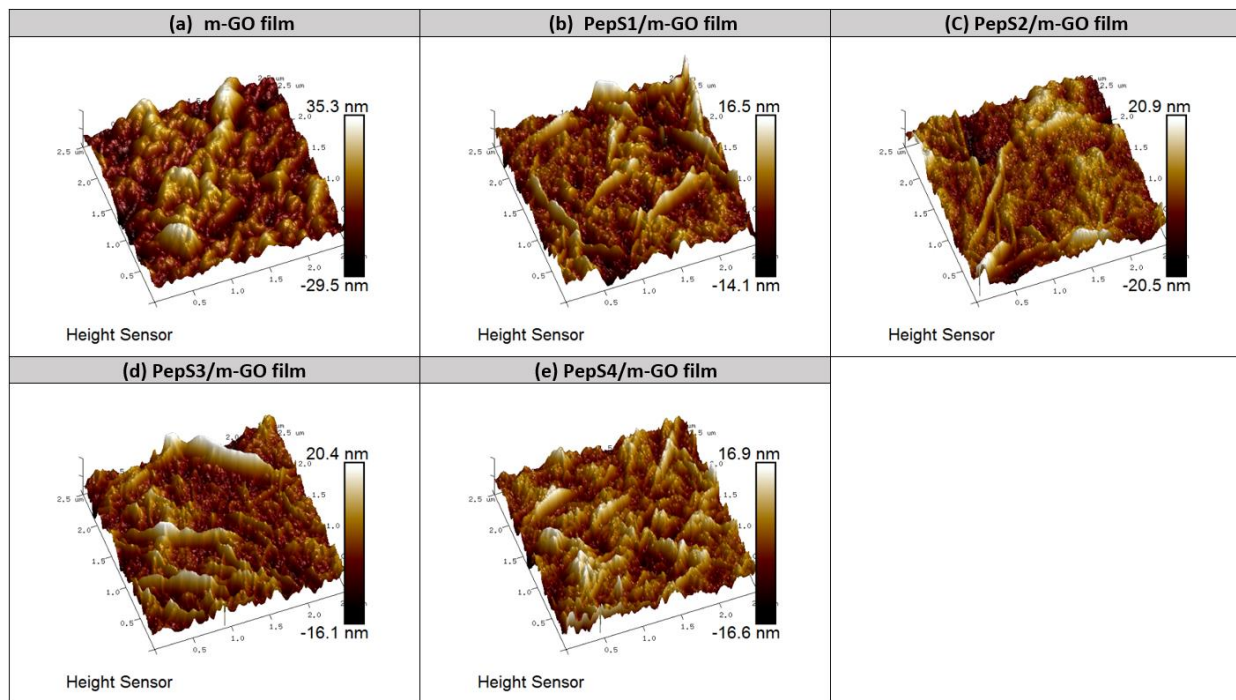
<sup>3</sup> Faculty of Medicine and Health Sciences, Universiti Malaysia Sabah, Jalan UMS, 88400 Kota Kinabalu, Sabah, Malaysia.

<sup>4</sup> Programme of Chemical Engineering, Faculty of Engineering, Universiti Malaysia Sabah, Jalan UMS, 88400 Kota Kinabalu, Sabah, Malaysia; css@ums.edu.my

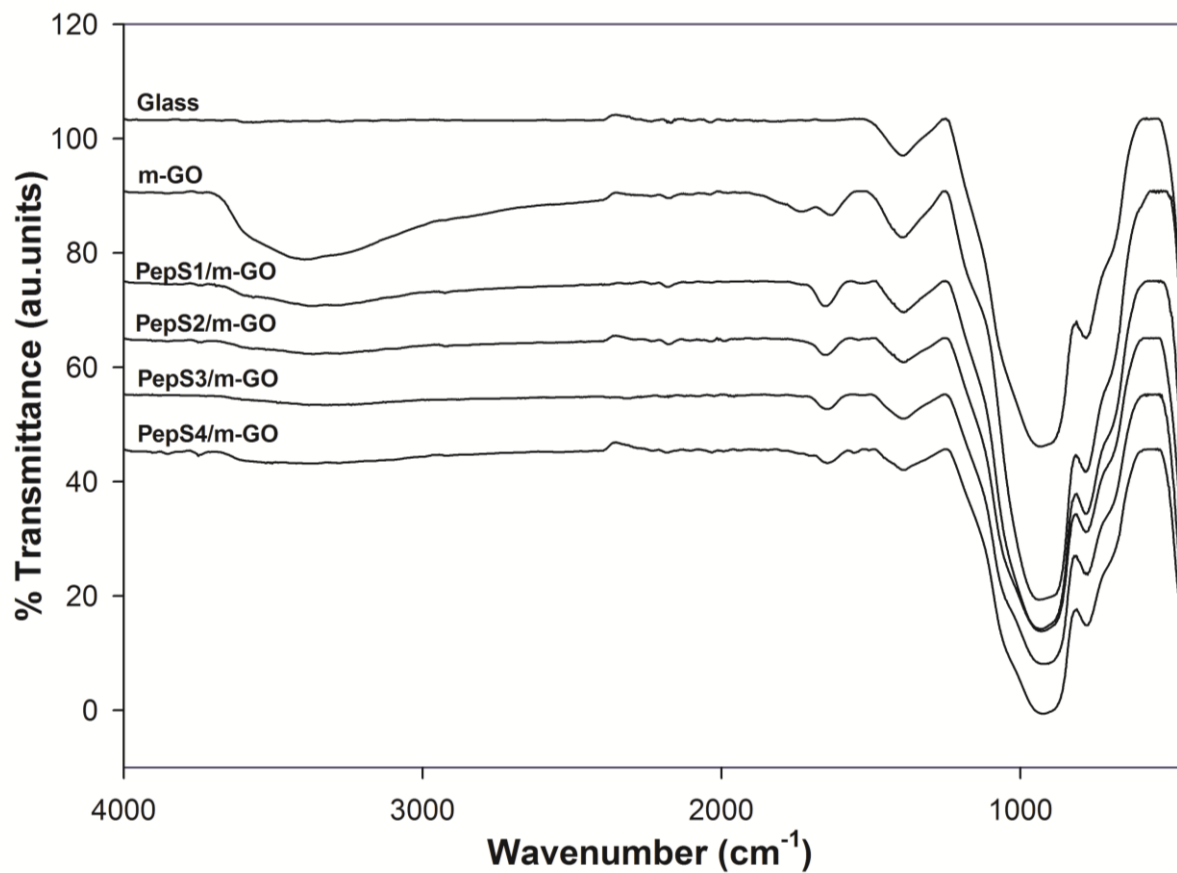
<sup>5</sup> Biotechnology Research Institute, Universiti Malaysia Sabah, Jalan UMS, 88400 Kota Kinabalu, Sabah, Malaysia.

\* Correspondence: sehow@ums.edu.my ; pymoh@ums.edu.my

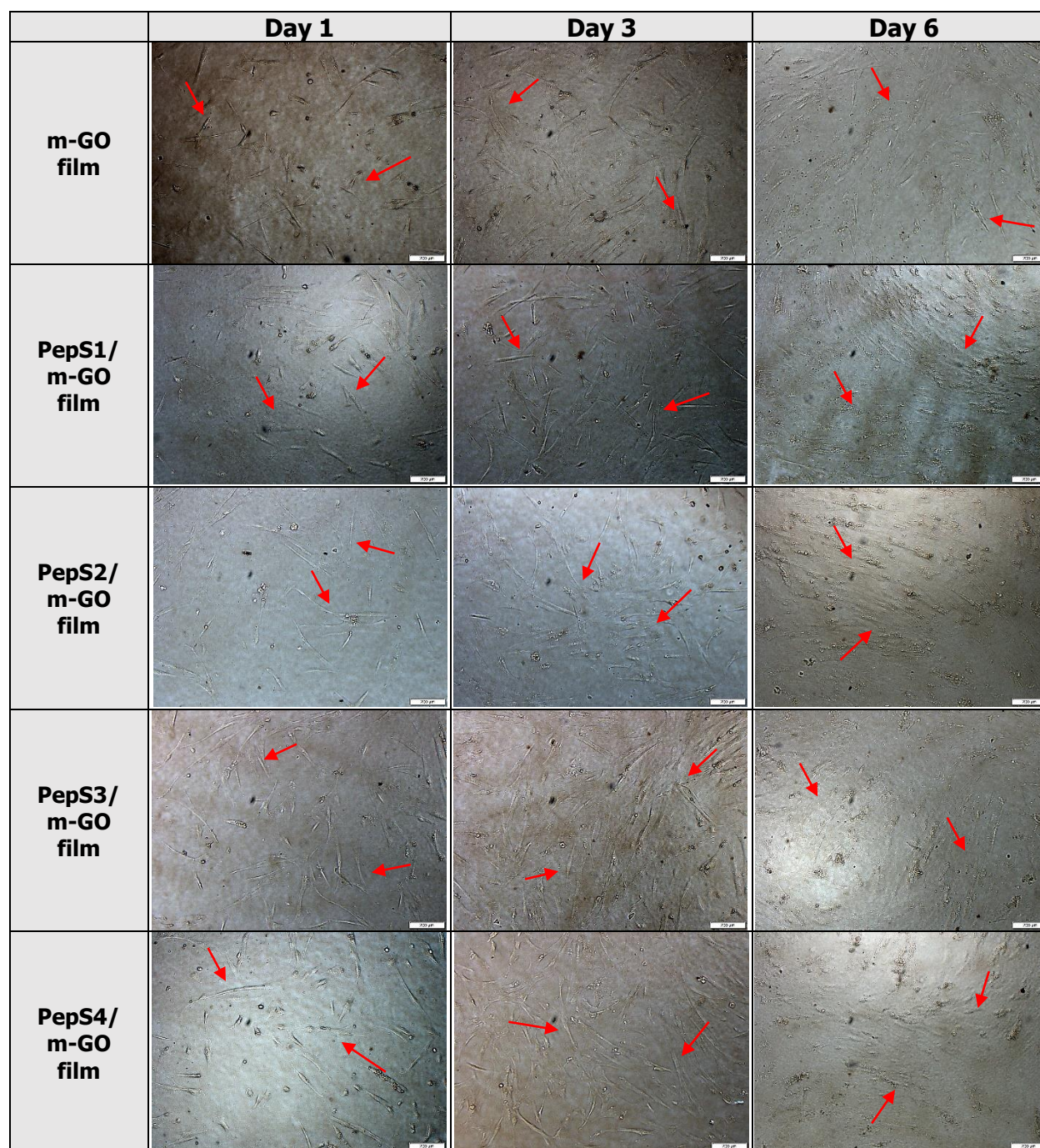
## Supplementary Material



**Figure S1:** The 3D AFM topographic image of m-GO film (a) before and (b-e) after conjugation with peptide at  $2.5\ \mu\text{m} \times 2.5\ \mu\text{m}$ .

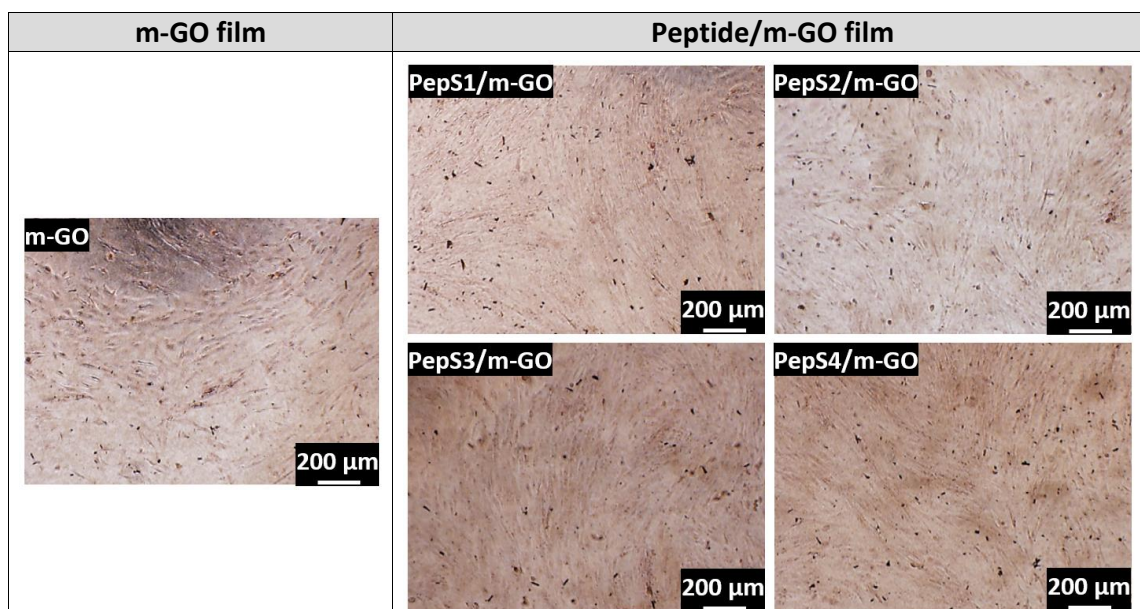


**Figure S2:** The raw FTIR spectra of glass, m-GO film and functionalized m-GO film with PepS1, PepS2, PepS3 and PepS4. Peaks below wavenumber 1500 cm<sup>-1</sup> belong to background signal from glass substrate.



**Figure S3:** Morphology of cultured WJ-MSCs onto m-GO film before and after conjugate with peptide sequence (PepS1, PepS2, PepS3 and PepS4) on days 1, 3 and 6. The red arrows indicate WJ-MSCs adhered on substrates. Scale bar represents 200  $\mu\text{m}$ .





**Figure S4:** Alizarin red-staining of WJ-MSCs on m-GO film before and after conjugate with peptide sequence (PepS1, PepS2, PepS3 and PepS4) after 14 days of basal medium (BM) incubation. All scale bars represent 200  $\mu\text{m}$ .