

Supplementary Materials

Table of Contents

1. Energy-Dispersive Spectroscopy (EDS) Analysis..... p2
2. Summarizing the results obtained in this work with other previously published papers...p3

1. Energy-Dispersive Spectroscopy (EDS) Analysis

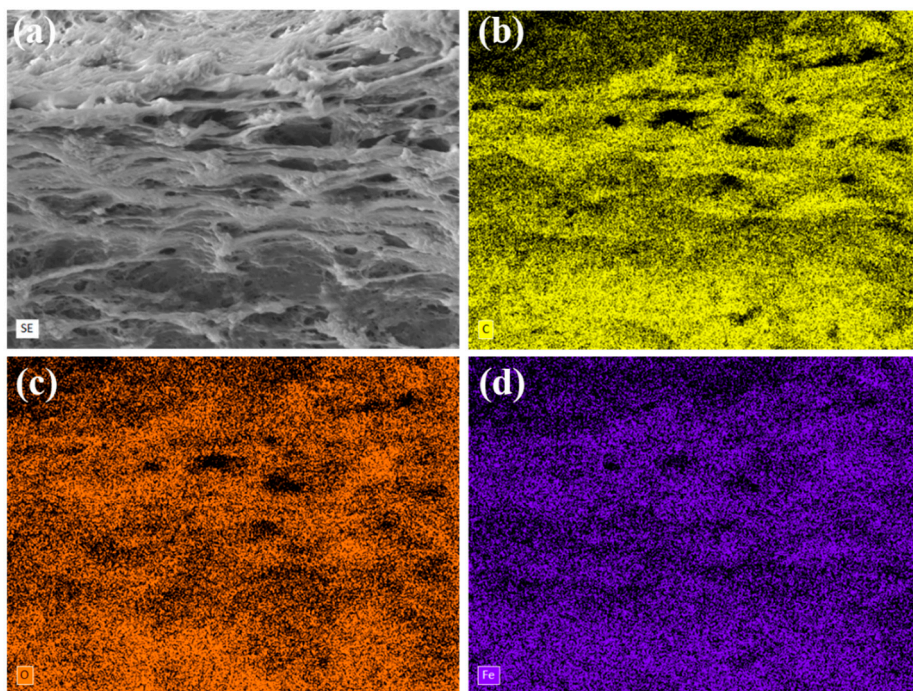


Figure S1. (a) SEM image of S1C1 gel, (b), (c) and (d) EDS mapping image for C, O and Fe

2. Summarizing the results obtained in this work with other previously published papers

	Acrylic acid /CMC	XG ¹ /CMC	HA ² /CMC	Alg ³ /CMC	SG /CMC
Gel Characteristics	Non-bead form Using synthetic polymers	Bead form Using modified natural polymers	Non-bead form Using modified natural polymers	Bead form Using natural polymers	Non-bead form Using natural polymers
Compressive test (Mechanical strength)	○	—	○	—	○
TGA⁴/DTG⁵ (Thermal stability)	—	○	○	—	○
pH-dependent drug release	—	○	—	○	○
Reference	[27]	[32]	[29]	[30]	—

1: Xanthan Gum 2: Hyaluronic acid 3: Alginate 4: Thermogravimetric analysis 5: Derivative thermogravimetry

Table S1. Summary of gel characteristics, compressive test, TGA/DTG, and pH-dependent drug release results obtained in this study with other previously published papers