

Supplementary Material

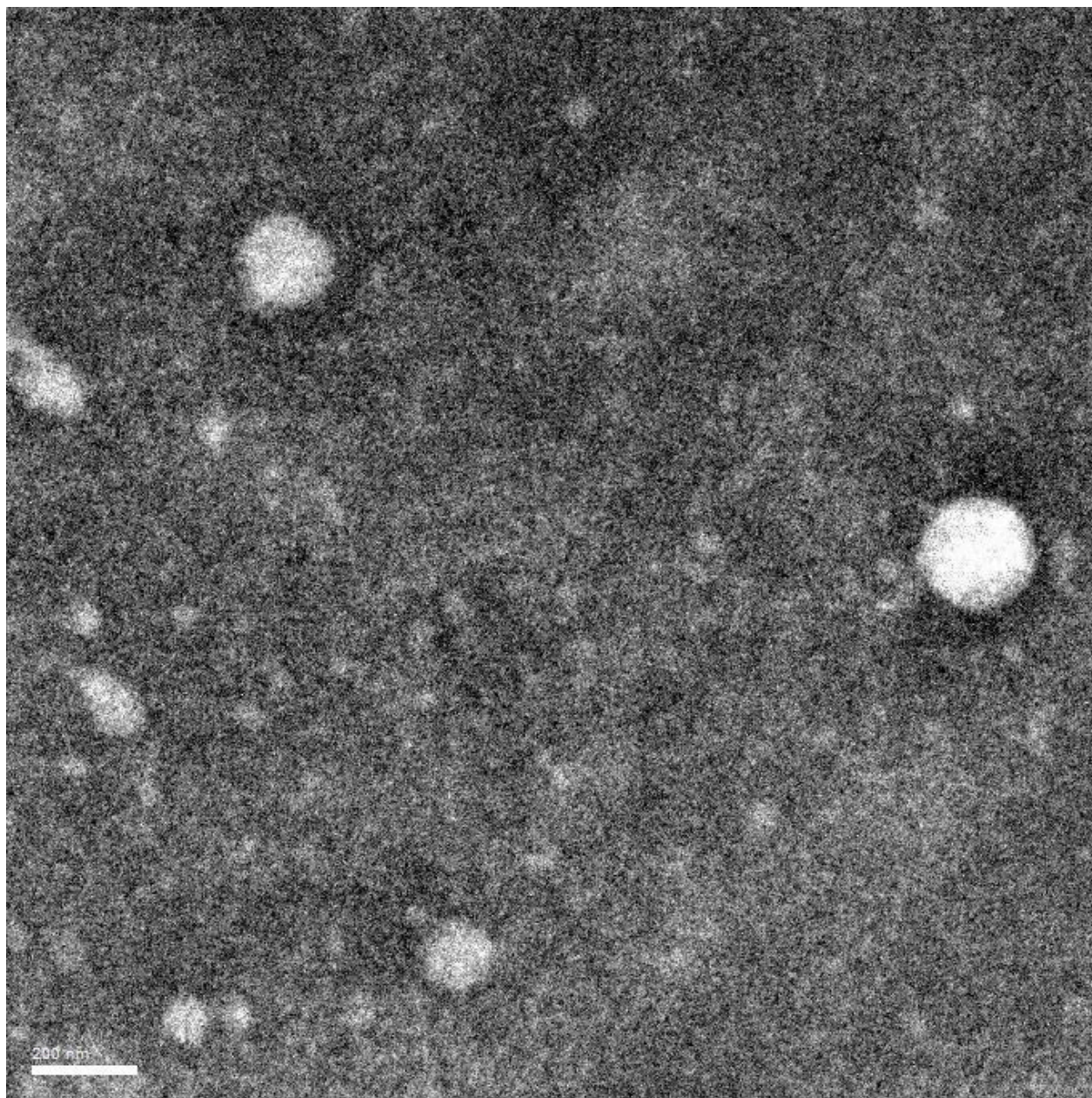


Figure S1. TEM images of Chitosan-P.

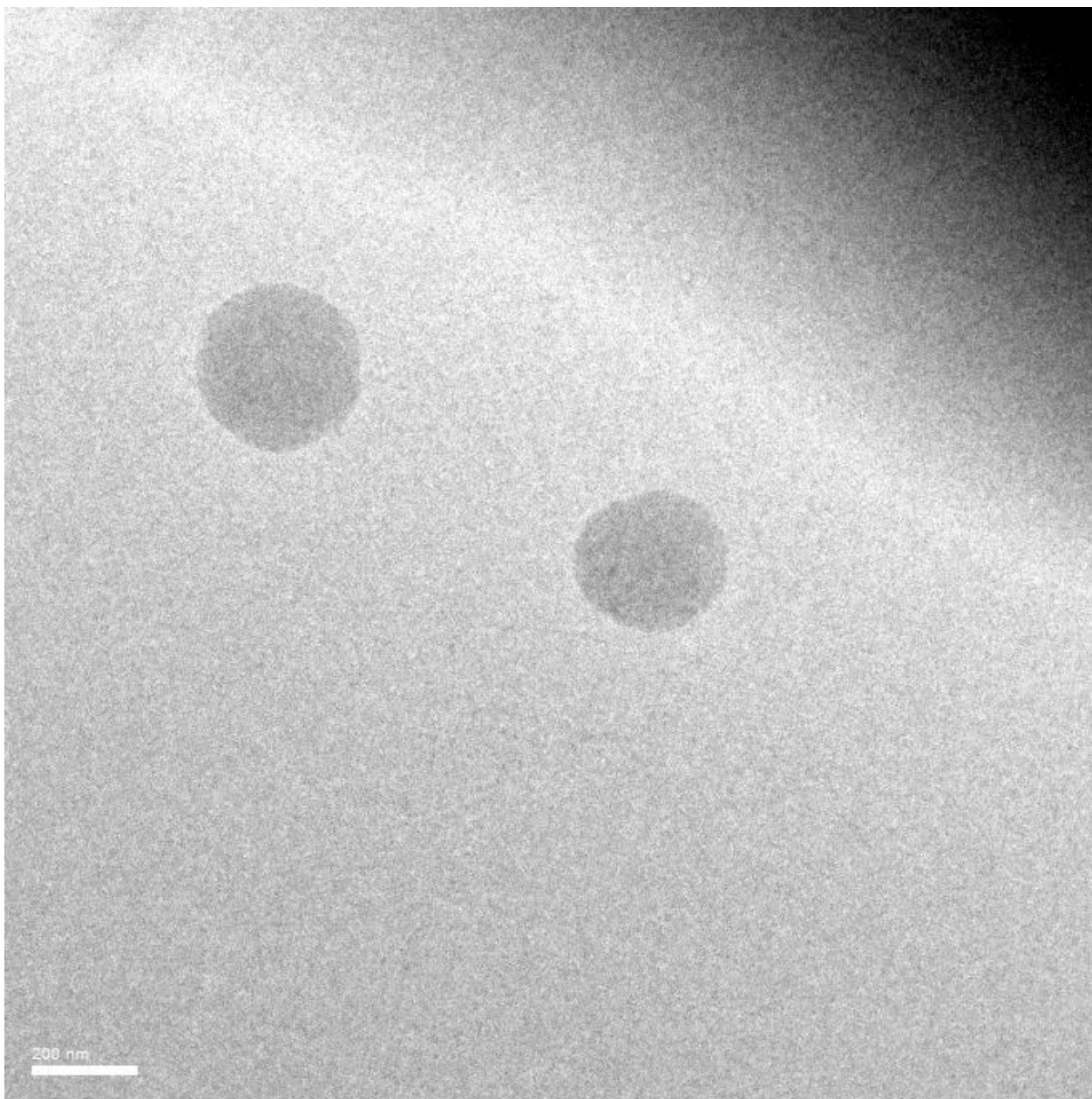


Figure S2. TEM image of EGCG-g-chitosan-P.

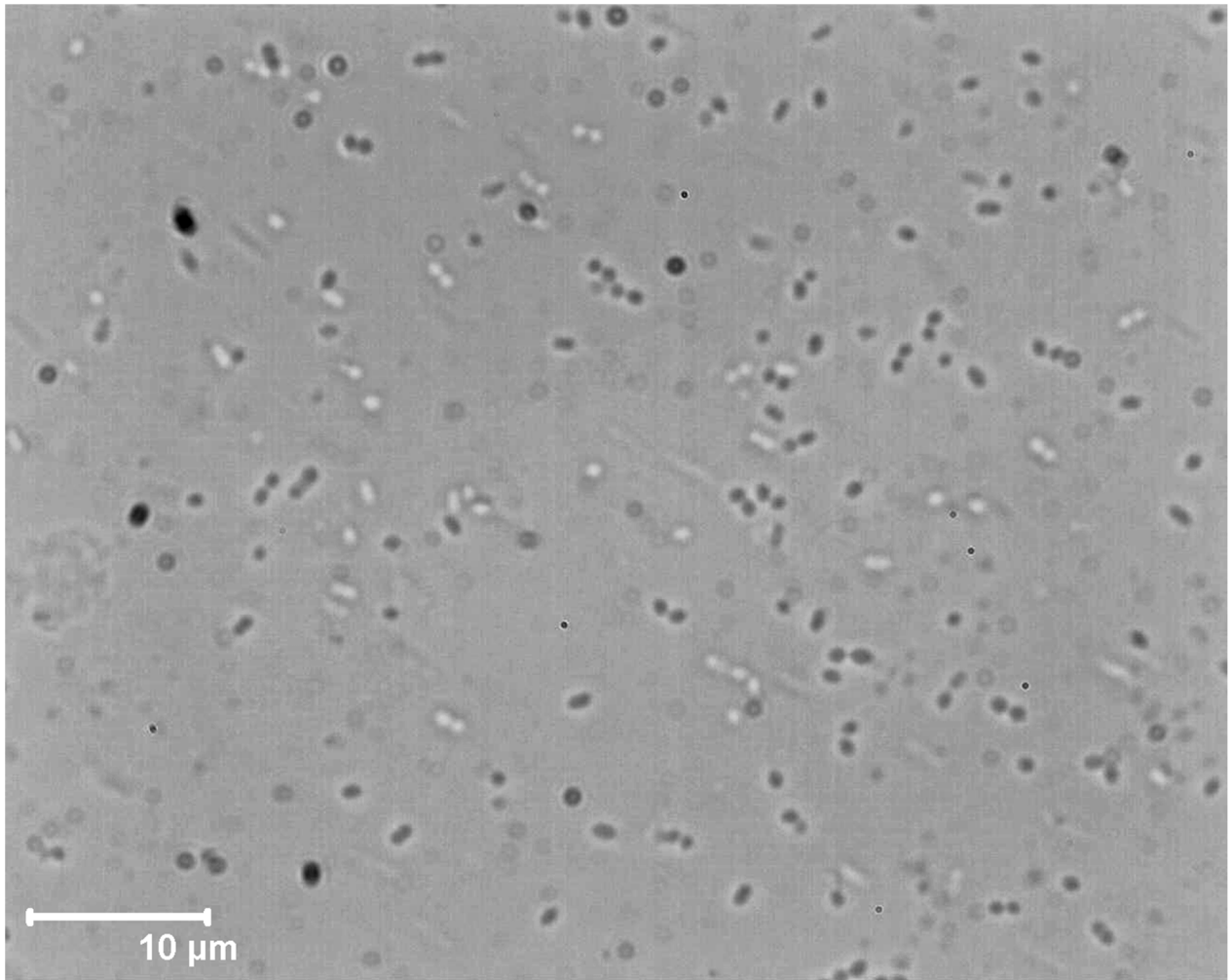


Figure S3. Morphology of *S. aureus* (control) (magnification =100x).

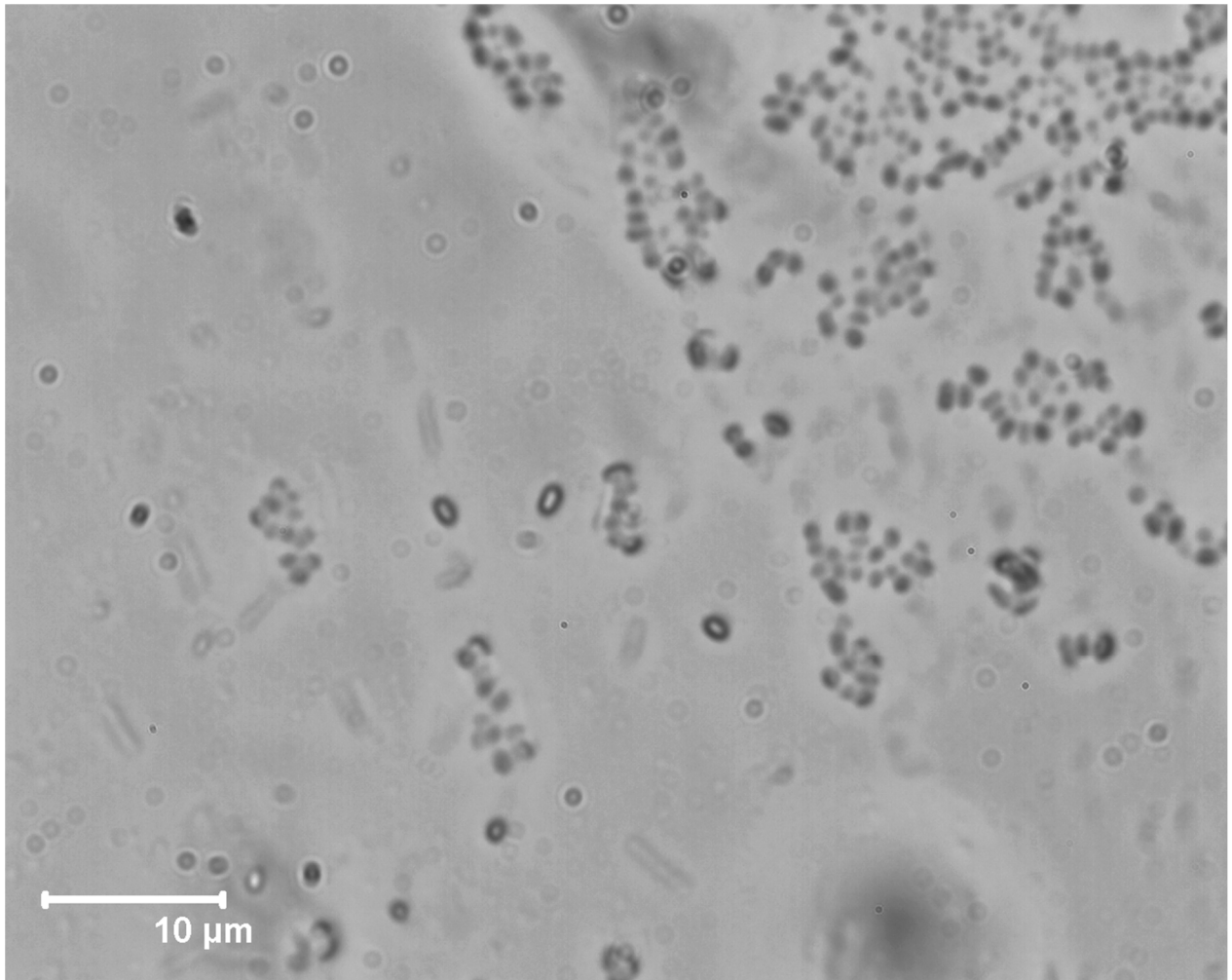


Figure S4. Effect of EGCG at 0.9 µg/mL on *S. aureus* bacterial morphology (magnification =100x).

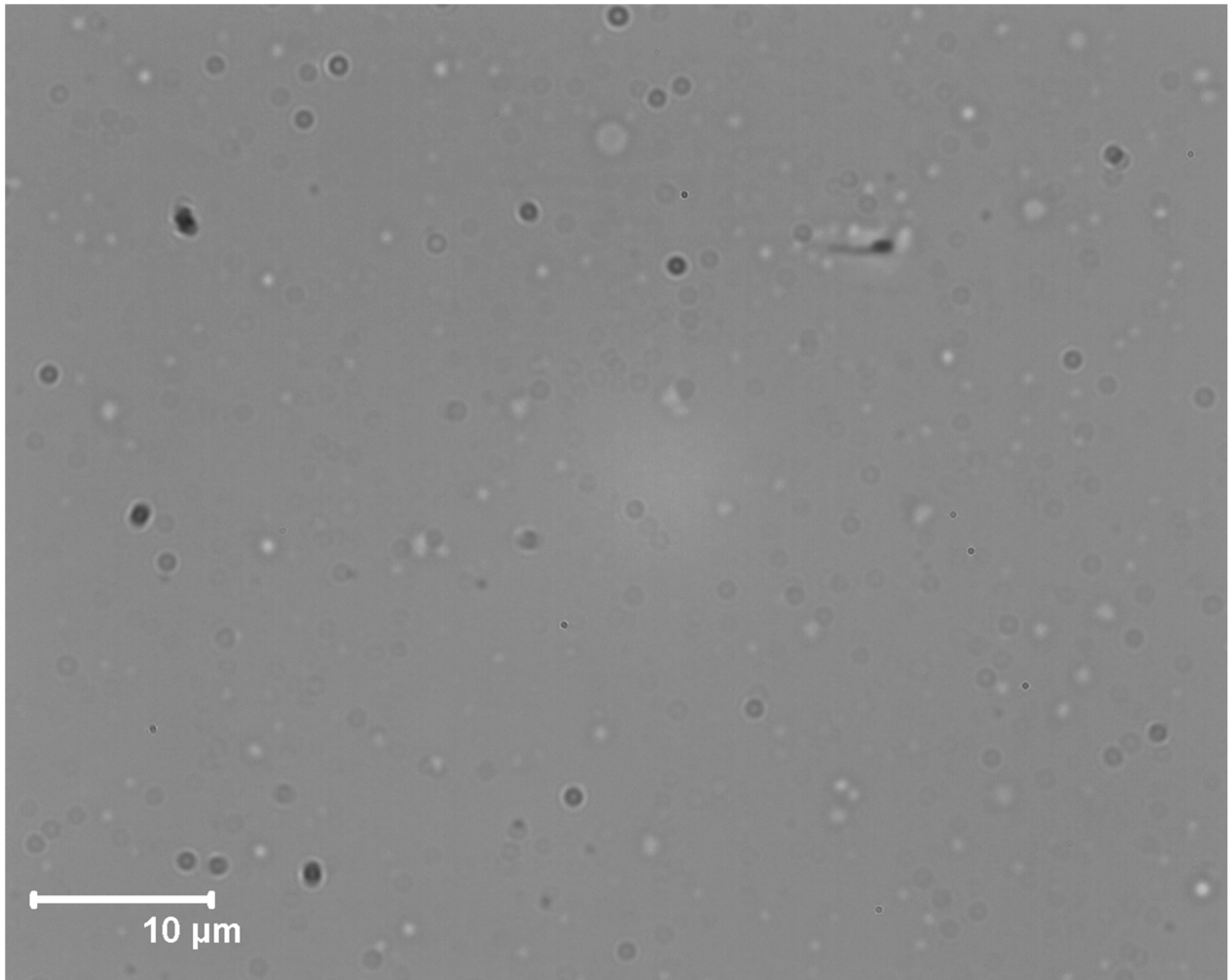


Figure S5. Effect of Chitosan-P at 0.9 µg/mL on *S. aureus* bacterial morphology (magnification =100x).

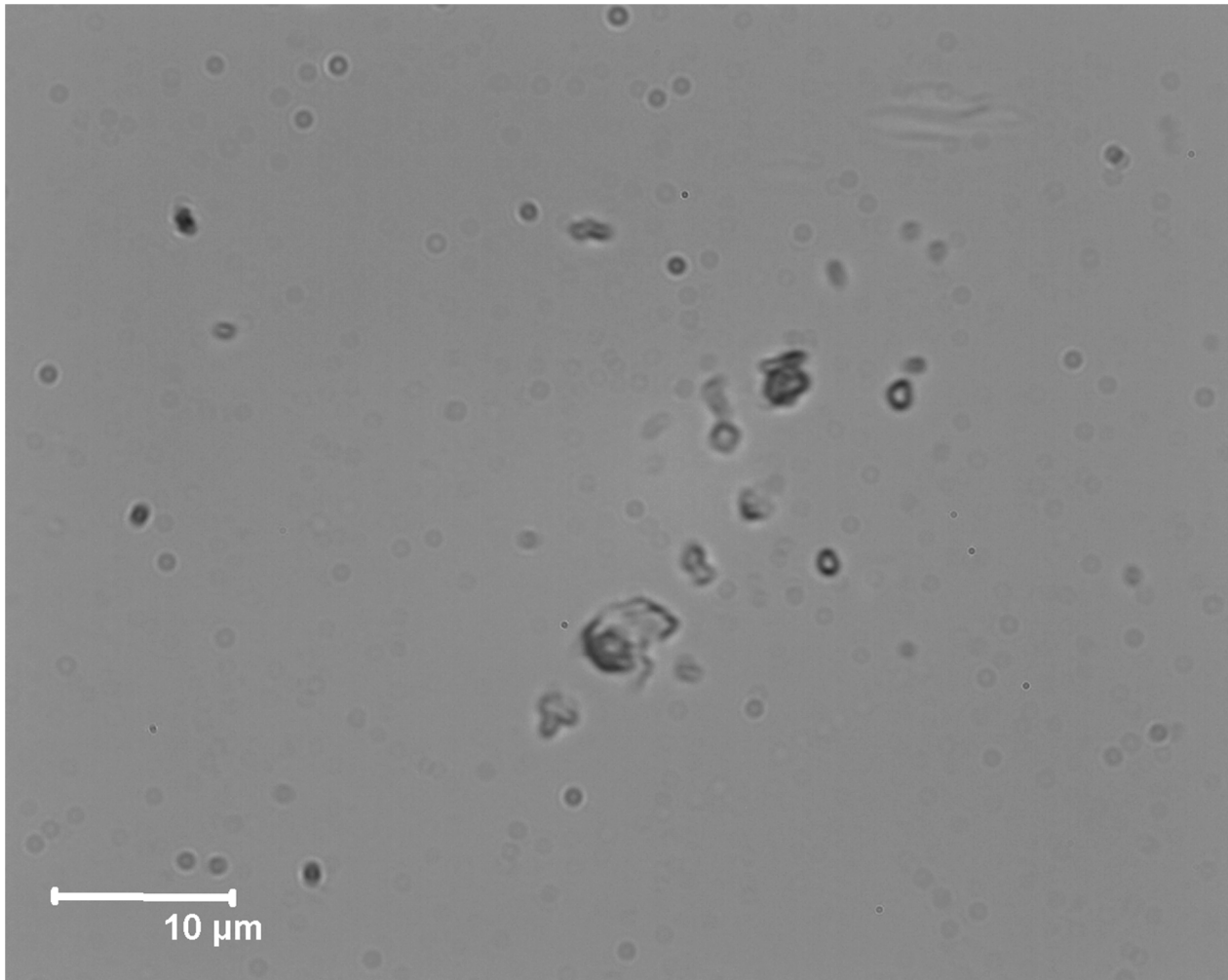


Figure S6. Effect of EGCG-g-chitosan-P at 0.9 μg/mL on *S. aureus* bacterial morphology (magnification =100x).

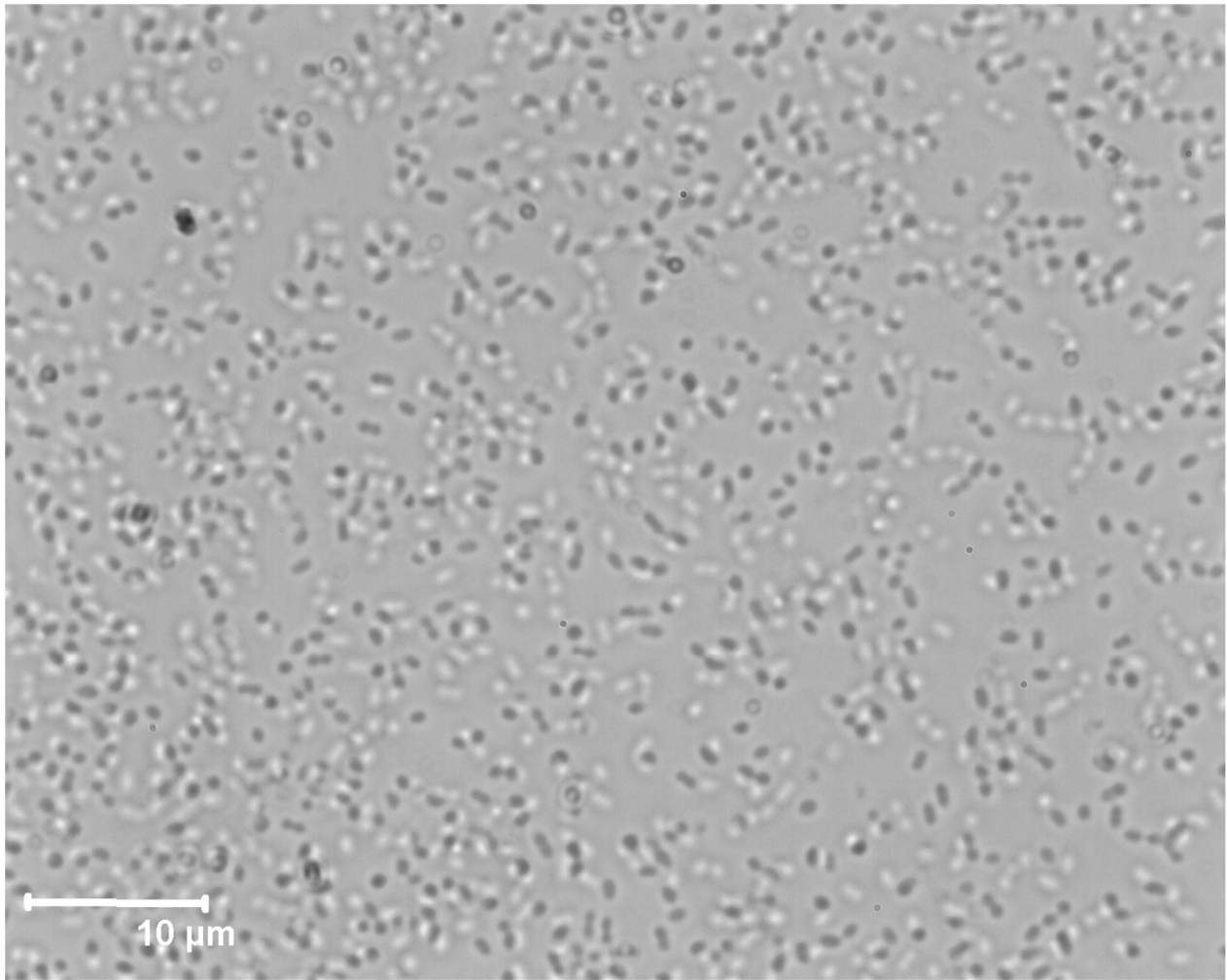


Figure S7. Morphology of *P. fluorescens* (control) (magnification =100x).

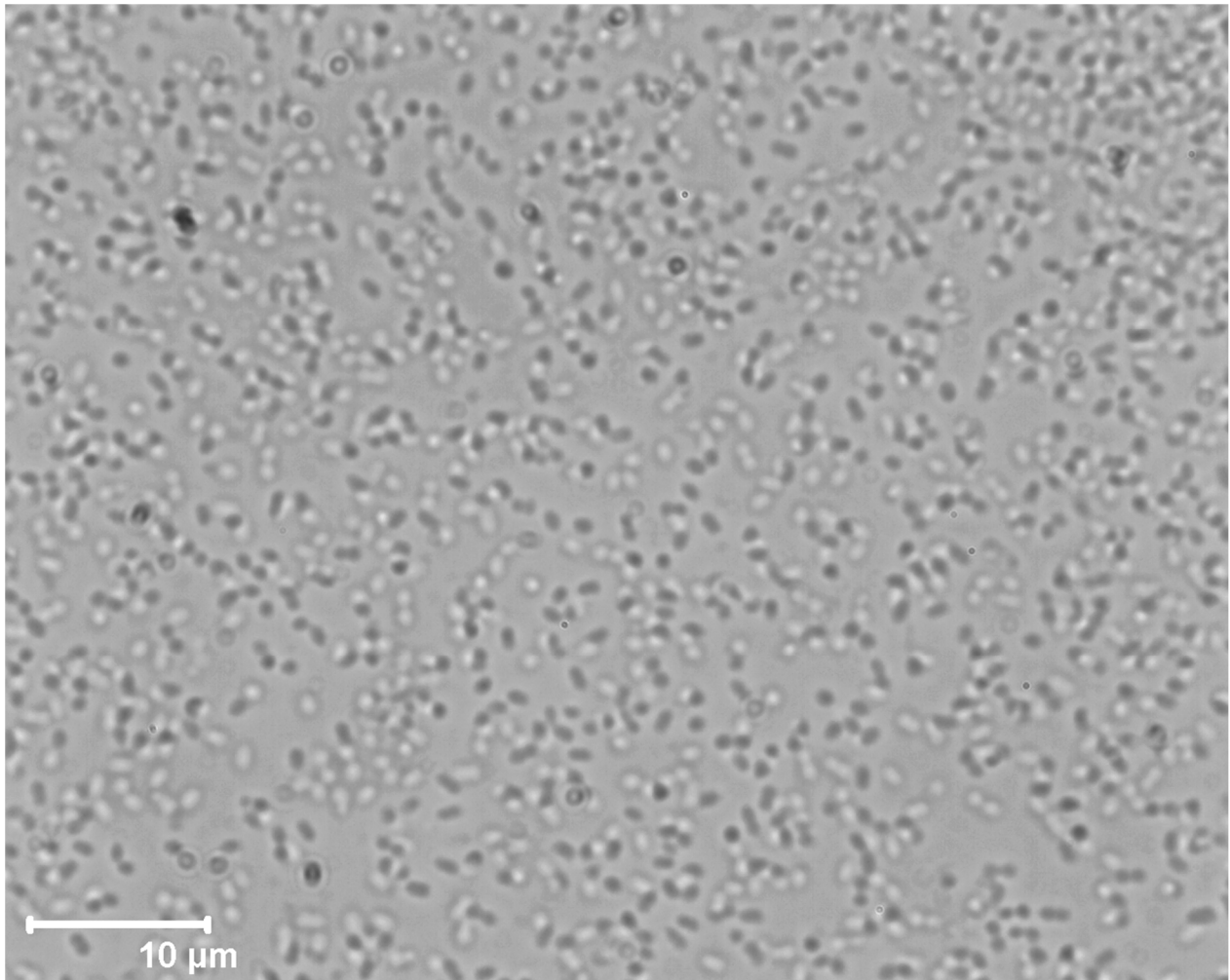


Figure S8. Effect of EGCG at 0.9 µg/mL on *P. fluorescens* bacterial morphology (magnification =100x).

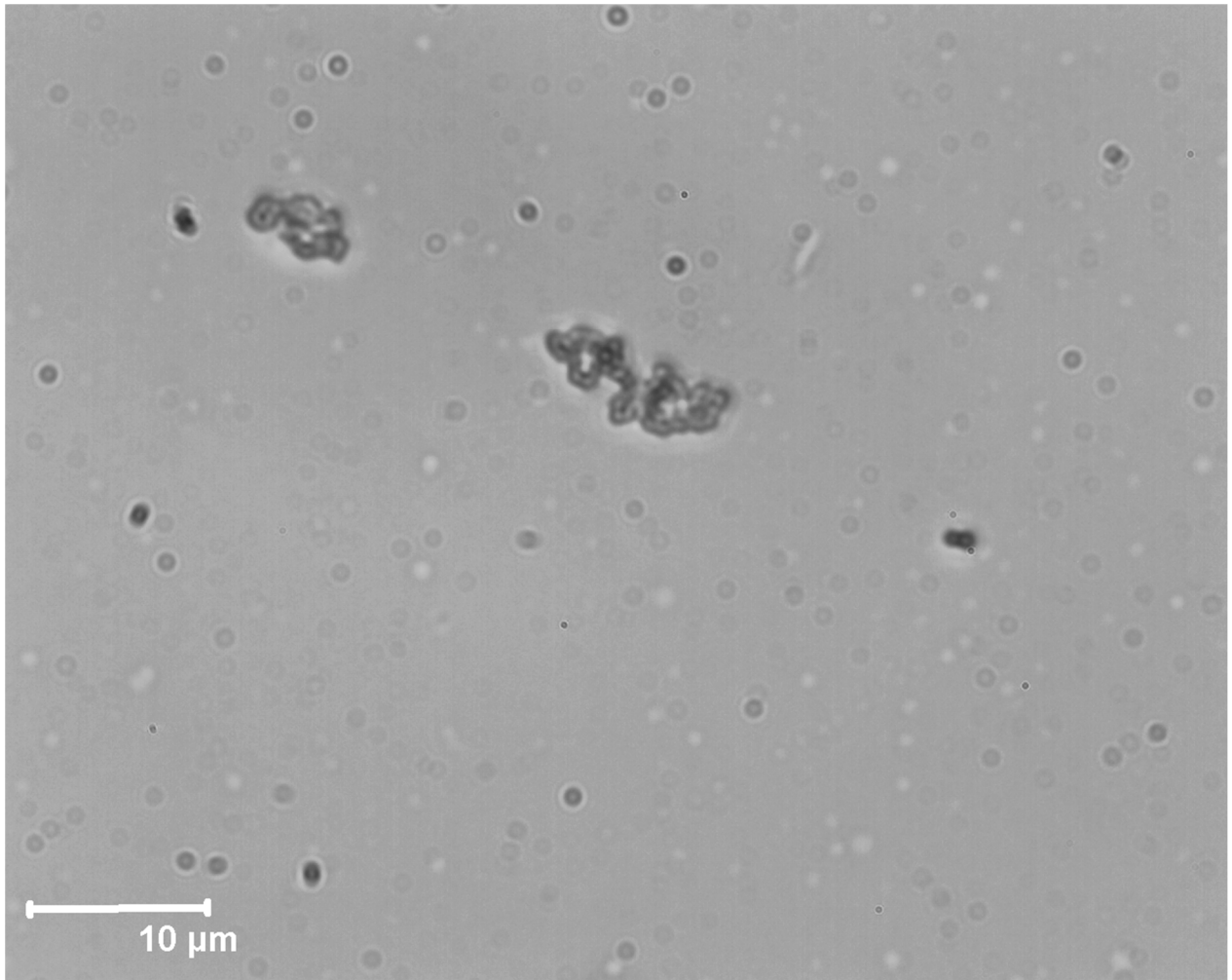


Figure S9. Effect of Chitosan-P at 0.9 μg/mL on *P. fluorescens* bacterial morphology (magnification =100x).

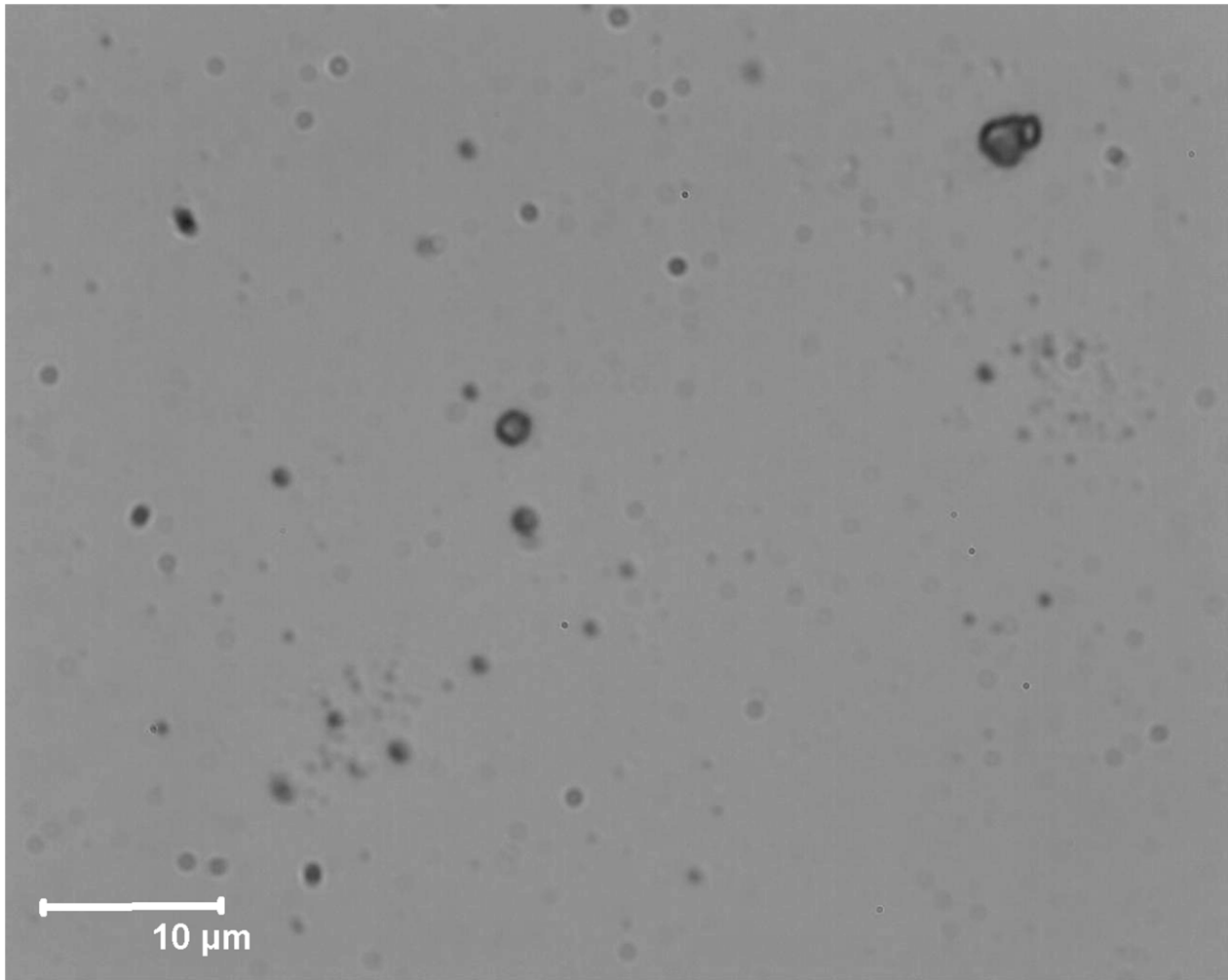


Figure S10. Effect of EGCG-g-chitosan-P at 0.9 $\mu\text{g/mL}$ on *P. fluorescens* bacterial morphology (magnification =100x).