

Table S1. PCR primers were detected

Name	Sequence (5' -3')
<i>Gm NHL1-S</i>	TTCTCAGCCAAACAATCC
<i>Gm NHL1-AS</i>	TAGGGCTGACGGTGAAGAA
<i>Gm NHL1-S</i>	agaacacgggggactcttgaTTCTCAGCCAAACAATCC
<i>GmNHL1-AS</i>	cgatcggggaaattcgagctTAGGGCTGACGGTGAAGAA
1302AS	ATGGTACAGAAAAAGGTTCTTTC
1302S	CACTTTTTTGGTCATTACATACGCTC
Bar-S	TCAAATCTCGGTGACGGGC
Bar-AS	ATGAGCCCAGAACGACGCC
35S-S	TAGAGGACCTAACAGAAC
35S-AS	CCGTGTTCTCTCCAAATG
NOS-S	GAATCCTGTTGCCGCTCTTG
NOS-AS	TTATCCTAGTTTGCGCGCTA
Cas9-S	CCCAAGAGGAACAGCGATAAG
Cas9-AS	GTCGATGGTGGTGTCAAAGT
Actin2-S	CTGAGGTTCTATTCCAGCCATCC
Actin2-AS	CCACCACTGAGGACAACATTACC
QGmNHL1-S	CTCACCCAAGACGACCTCAAG
QGmNHL1-AS	ATGCCGGACTCGACGTACTC
Target Sequence+PAM	SG Sequence
GTAGACCGTGACGTCTTGAGG	GTGAACGGAATTGAACGG
AGATTACGTAGATTTCGAGGCGG	GTGTTTGGAACCCTTGAGAG

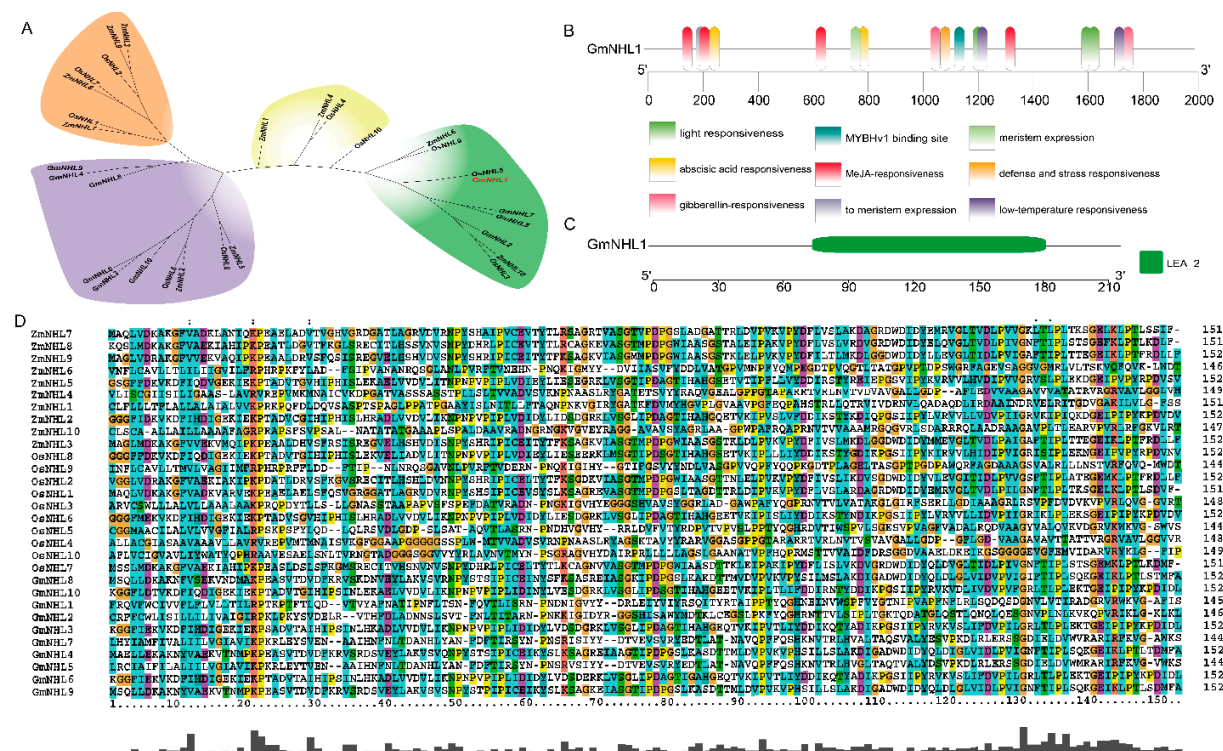


Figure S1: Bioinformatics analysis of *GmNHL1* gene. (A) Phylogenetic tree of *NHL* family genes in rice, corn and soybean; (B) Analysis of cis-acting elements in promoter region; (C) Conserved domain of *GmNHL1* gene analyses; (D) Multiple sequence alignment of *NHL* family genes in rice, corn and soybean