

## Supplementary Material

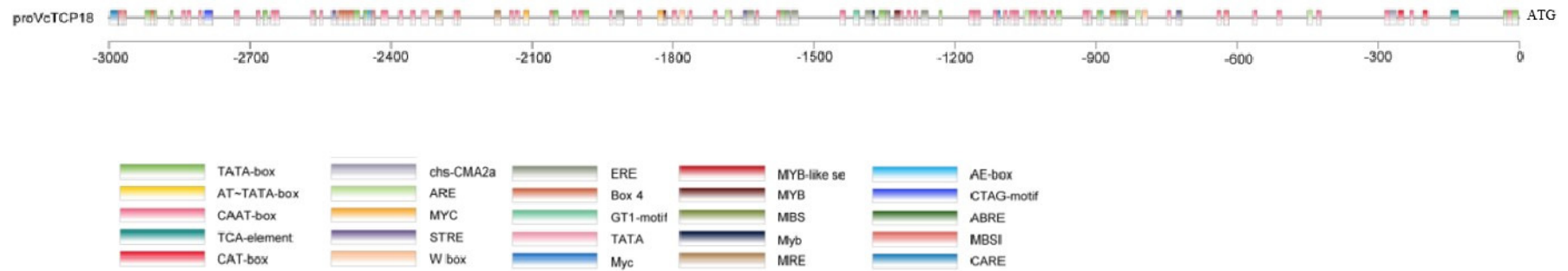


Figure S1. Cis-acting sequence elements of the *VcTCP18* promoter. The different colored rectangles indicated divergent cis-elements.

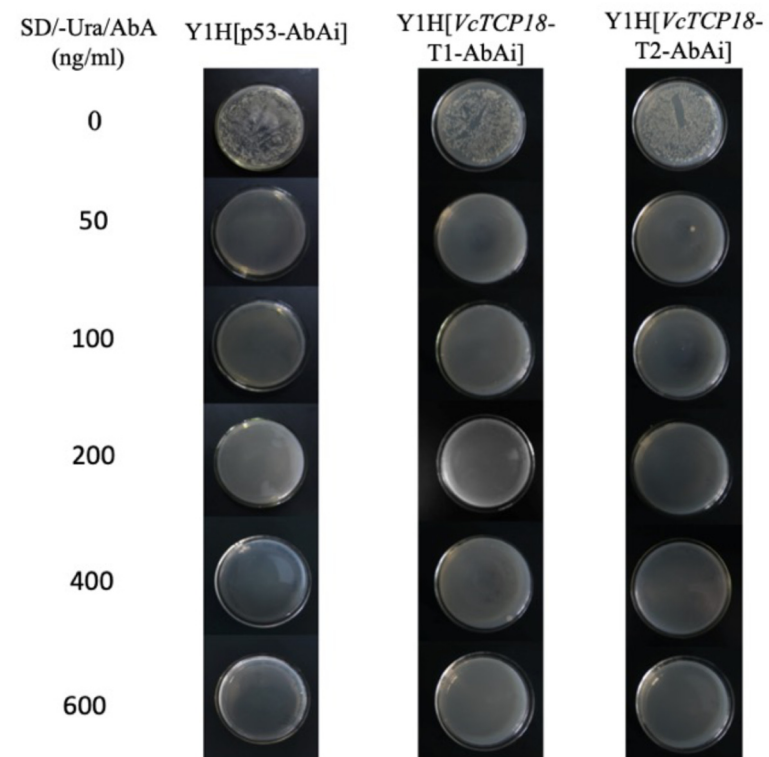


Figure S2. Background level detection.

**Table S 1** The primers used in RT-qPCR.

Gene name	Forward primer (5'–3')	Reverse primer (3'–5')
<i>VcTCP18</i>	ATCGAGGGATAAAGCAAGAGC	TCACGGCTTCCAGAGTTTG
<i>VcGAPDH</i>	CGGCTACTTACGAGCAAATCAA	TTCAGTGTAGCCCAAATTCCTTT

**Table S2** The primers for cloning *VcTCP18* promoters

Name	Forward primer (5'–3')	Reverse primer (3'–5')
pro <i>VcTCP18-1381Z</i>	CGGGATCC CACCAAGATTATTGACCGTA	TGCACTGCAG GAGAAAAAGTTGGCTAGAGAG
T1- pAbAi	GGGGTACC GACCGTAAAAAAGGATCTC	GCGTCGAC TGTAATTGGGTGGGA
T2- pAbAi	GGGGTACC GGGTTGTTTCATTTACTTTCT	GCGTCGAC GGTAGAGGAGTTAGTTCAT
pro <i>VcTCP18</i> -LUC 0800	TGCACTGCAG CACCAAGATTATTGACCGTA	CGGGATCC GAGAAAAAGTTGGCTAGAGAG
P1 <i>VcTCP18</i> -LUC 0800	TGCACTGCAG AGTTTCTAACAATTGGCAC	CGGGATCC GAGAAAAAGTTGGCTAGAGAG
P2 <i>VcTCP18</i> -LUC 0800	TGCACTGCAG GCCTTCTCTCTCTCTCTC	CGGGATCC GAGAAAAAGTTGGCTAGAGAG