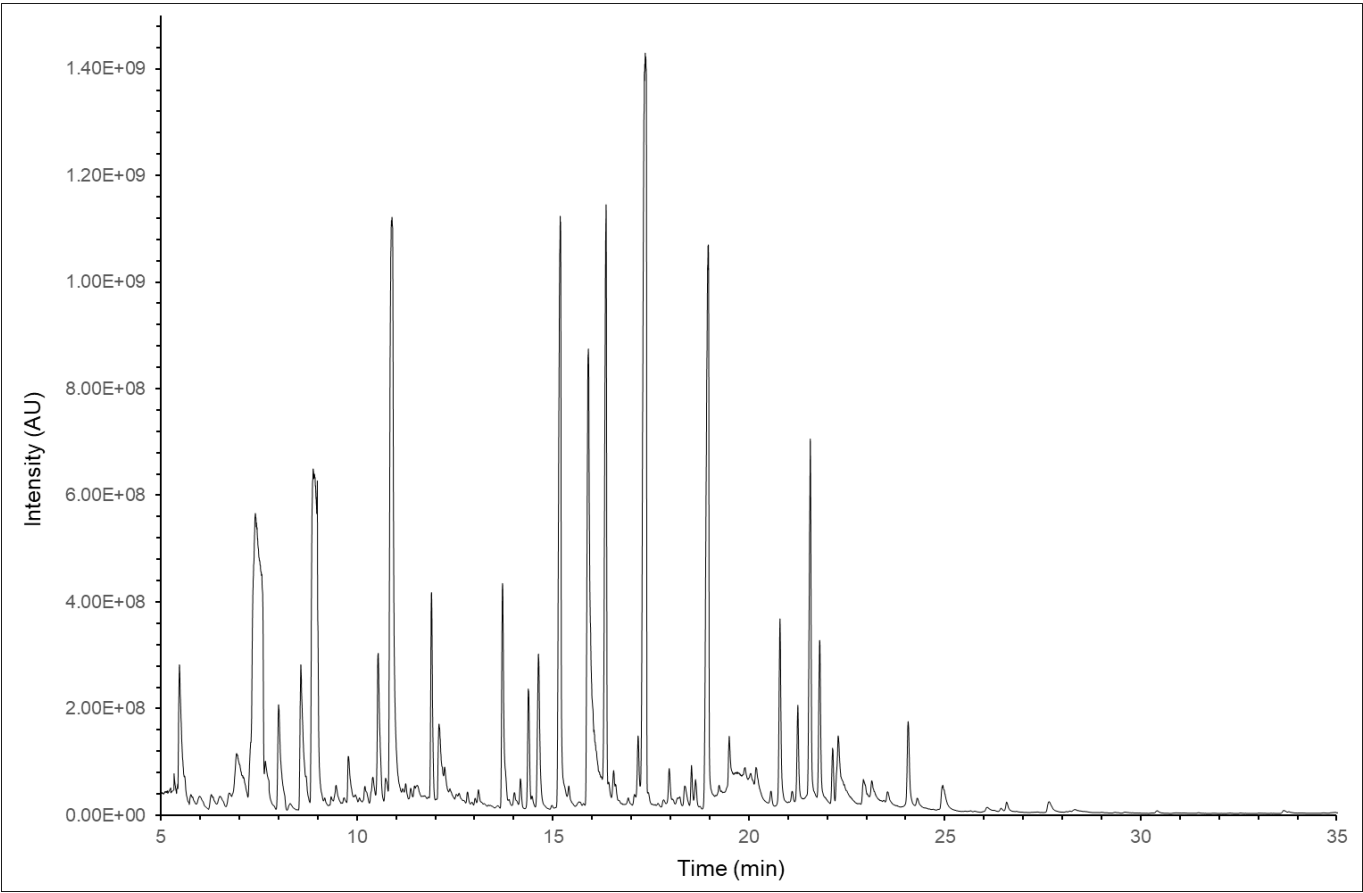
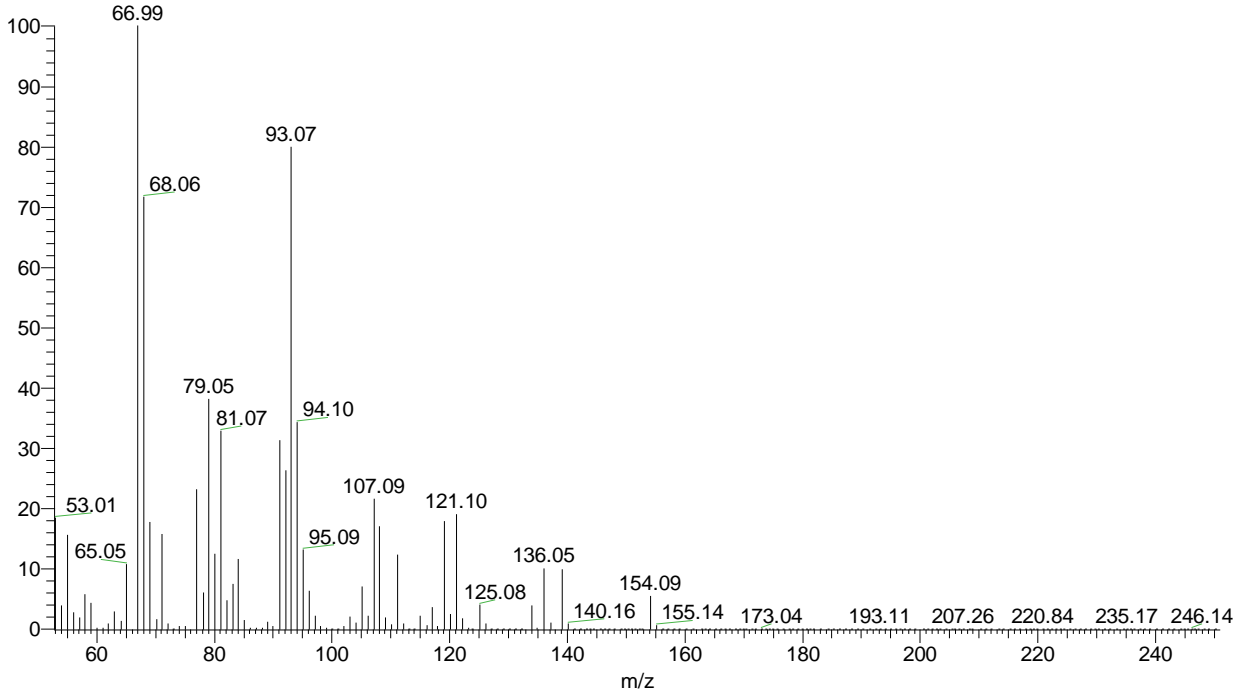


Chromatogram of essential oil obtained from *Myrtus tarentina*



MS spectrum of peak with RT = 7.42 min

MIRTO_TAREN #711 RT: 7.42 AV: 1 NL: 7.19E7
T: + c EI Full ms [50.00-1000.00]



MS Spectrum of peak with RT = 21.24 min

MIRTO_TAREN #4776 RT: 21.24 AV: 1 NL: 2.47E7
T: + c EI Full ms [50.00-1000.00]

