

Supplementary Material

Biological Activities of the Fruit Essential Oil, Fruit, and Root Extracts of *Ferula drudeana* Korovin, the Putative Anatolian Ecotype of the Silphion Plant [†]

Fatma Tosun ^{1,*}, Fatih Göger ², Gökalep İşcan ³, Mine Kürkçüoğlu ³, Fadıl Kaan Kuran ⁴ and Mahmut Miski ^{4,*}

¹ Department of Pharmacognosy, School of Pharmacy, İstanbul Medipol University, İstanbul 34083, Turkey

² Department of Pharmaceutical Botany, Faculty of Pharmacy, Afyonkarahisar Health Sciences University, Afyonkarahisar 03030, Turkey; fatih.goger@afsu.edu.tr

³ Department of Pharmacognosy, Faculty of Pharmacy, Anadolu University, Eskişehir 26470, Turkey; giscan@anadolu.edu.tr (G.İ.); mkurkcuo@anadolu.edu.tr (M.K.)

⁴ Department of Pharmacognosy, Faculty of Pharmacy, İstanbul University, İstanbul 34116, Turkey; kaankuran@gmail.com

* Correspondence: ftosun@medipol.edu.tr (F.T.); mahmut.miski@gmail.com (M.M.); Tel.: +90-5334798035 (F.T.); +90-5455504455 (M.M.)

[†] Dedicate this publication to the victims of the February 6th South-East Anatolia Earthquake.

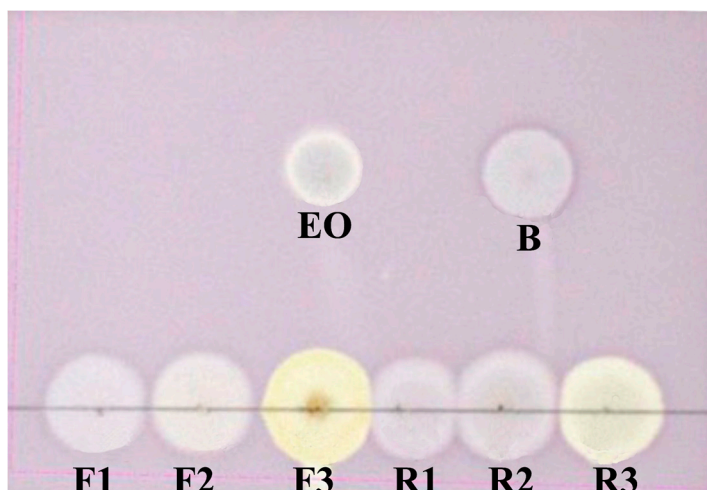


Figure. S1. The DPPH[•] reagent evaluation of the essential oil and extracts of *Ferula drudeana*. **EO**: Essential oil, **B**: Blank, **F**: Fruit extracts, **R**: Root extracts (1: Petroleum ether, 2: Methylene chloride, 3: Methanol)

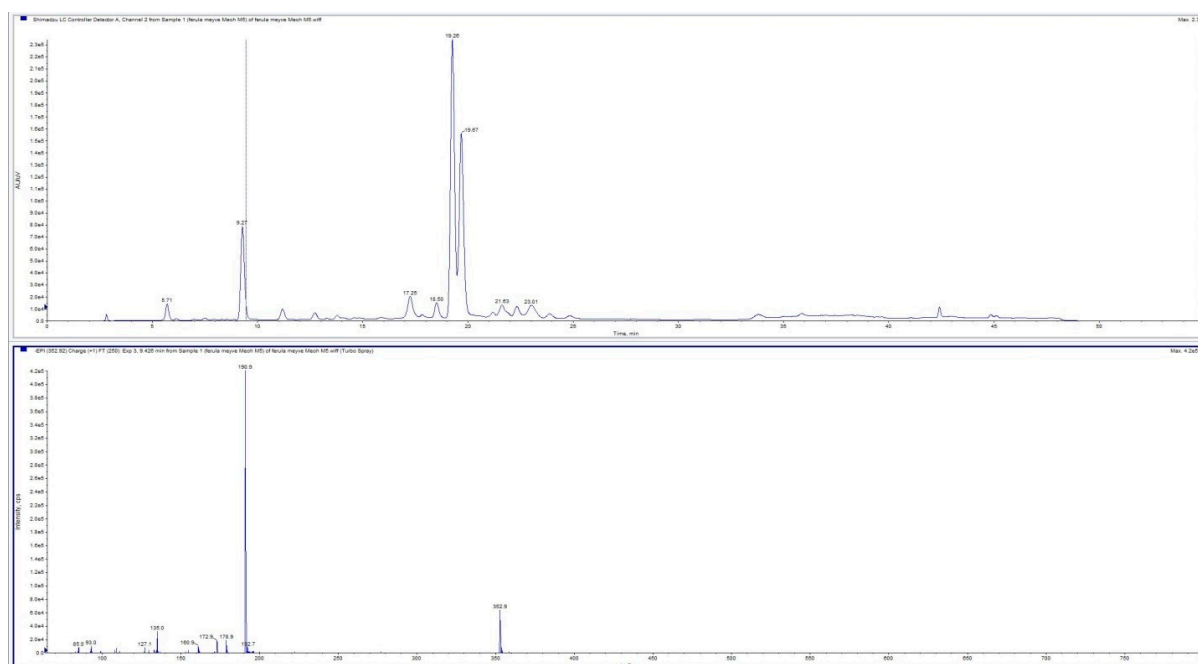


Figure. S2. LC-MS/MS spectrum of 5-caffeoylquinic acid (**13**, chlorogenic acid)

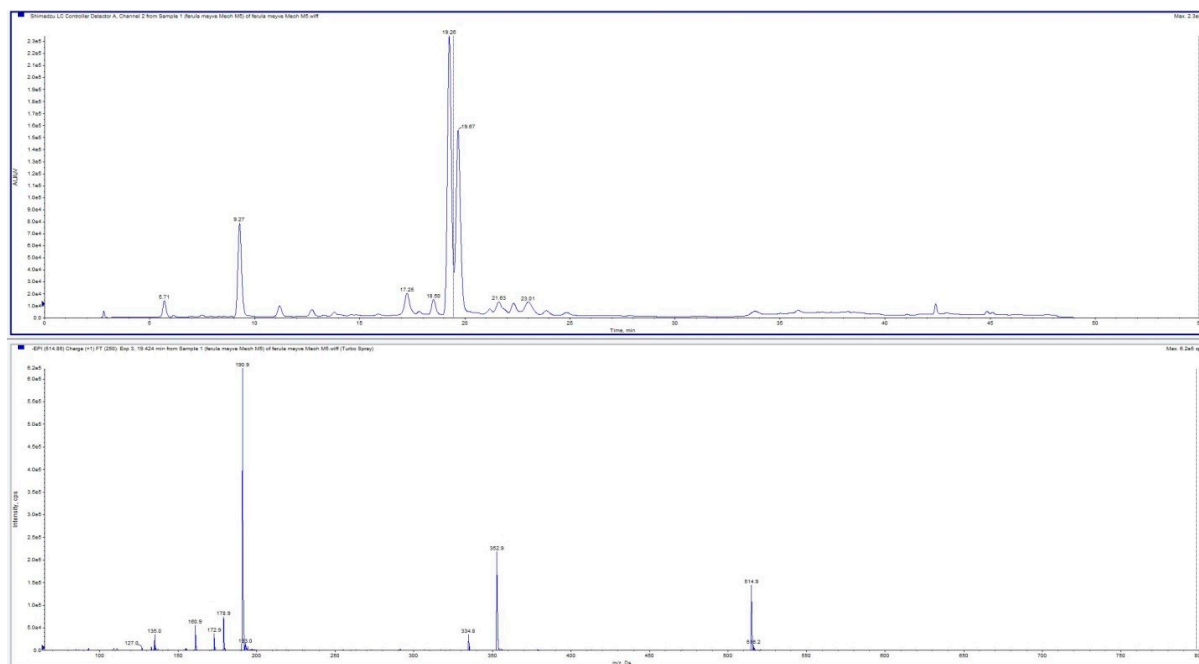


Figure. S3. LC-MS/MS spectrum of 1,5-dicafeoylquinic acid (16, cynarine)

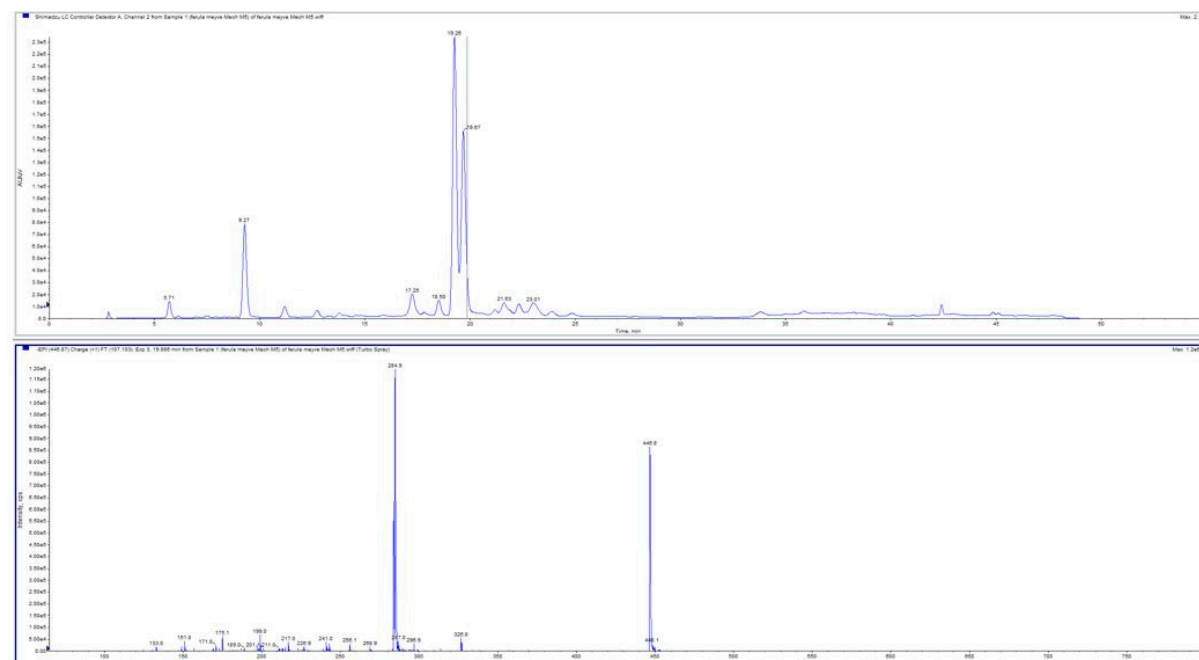


Figure. S4. LC-MS/MS spectrum of Luteolin 7-glucoside (18, cynaroside)