

Figure S1. (A) Photographs of representative *Pandanus amaryllifolius* treated with 1:100, 1:250, 1:500, 1:1000 oil palm wood vinegar (OPWV) and distilled water (control) on days 0 and 19. (B) Photographs of representative *P. amaryllifolius* sprayed with OPWV at different frequencies on days 0 and 19. F1: applied at 6-day intervals, F2: applied at 3-day intervals, and F3: applied at 1-day interval. Bar = 10 cm.

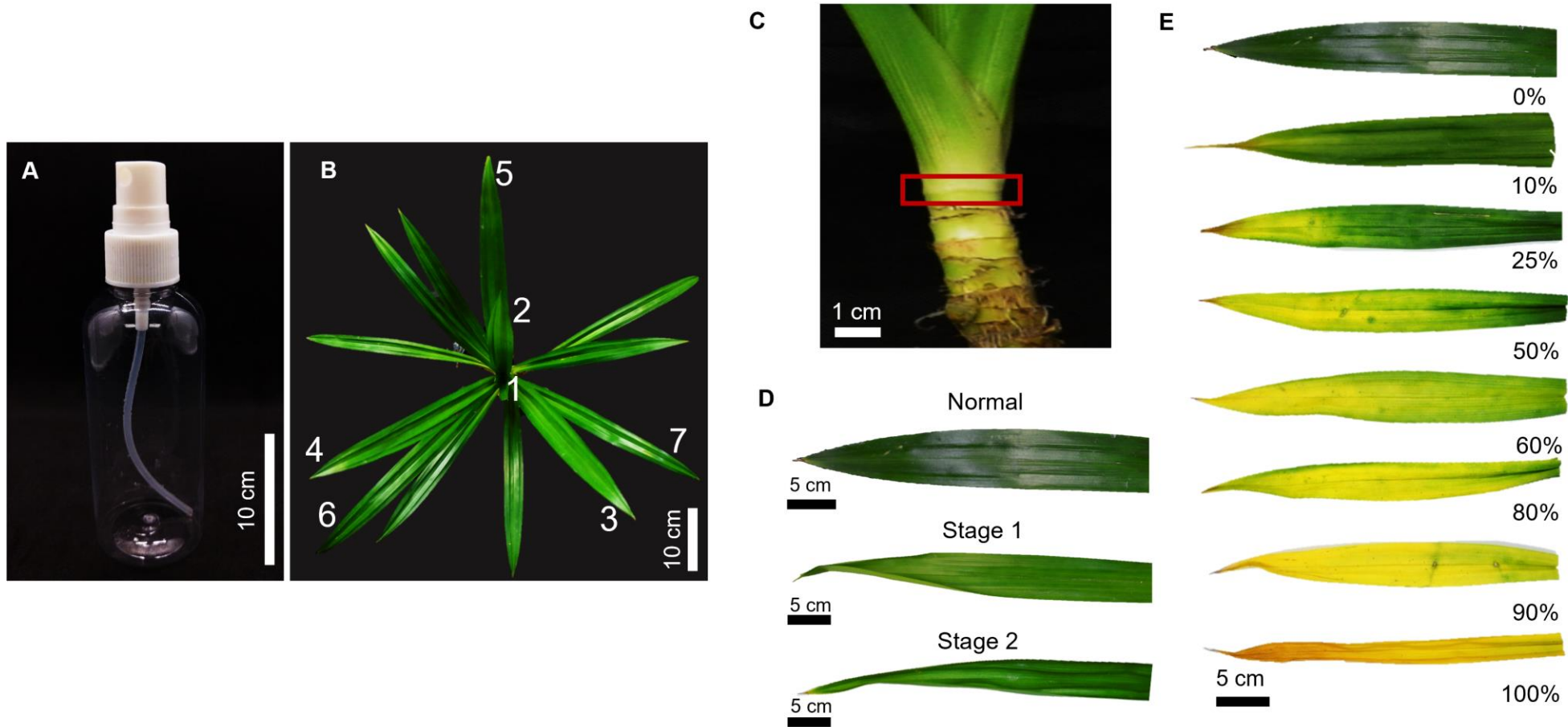


Figure S2. (A) Commercial handheld sprayer with 120 mL capacity. (B) The position of the harvested leaves. Leaf numbers 3, 4 and 5 were harvested for all assays. (C) The region for measuring the stem circumference. (D) Normal leaf and different stages of leaf folding. (E) The percentage of yellowing leaves from 0% to 100% yellowing.

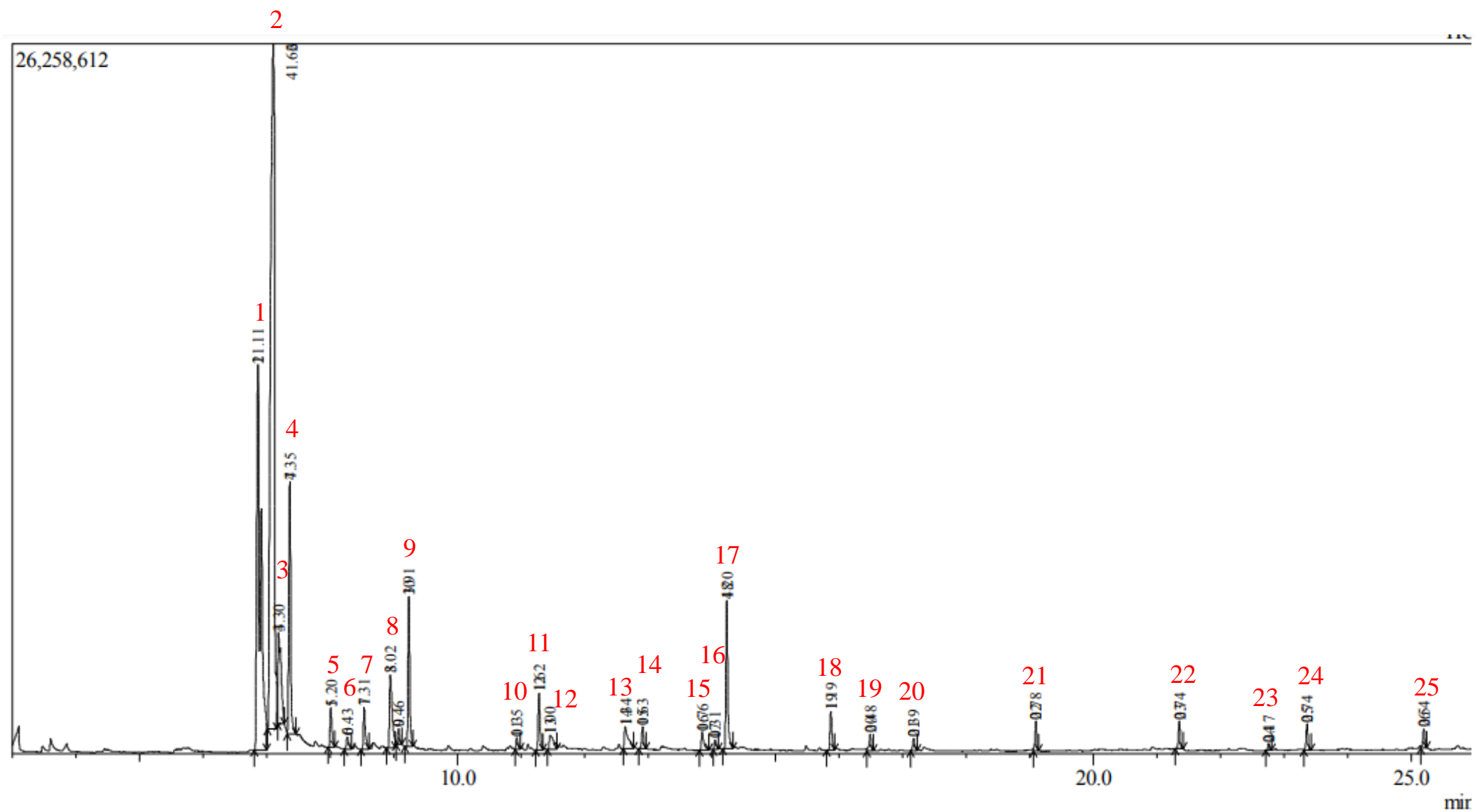


Figure S3. The GC-MS profile of oil palm wood vinegar (OPWV) at 1:500 dilution.