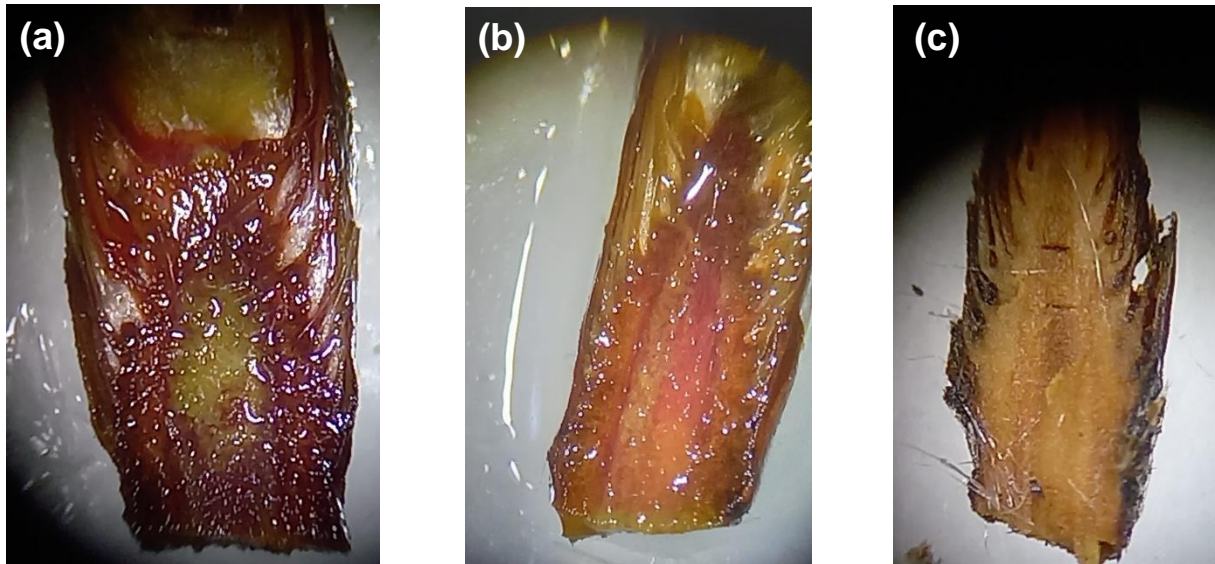


Supplementary Material to:

## Legacy Effects in Buds and Leaves of European Beech Saplings (*Fagus sylvatica*) after Severe Drought

Frank M. Thomas \*, Lena Schunck and Alexis Zisakos



**Figure S1.** Buds of the European beech (*Fagus sylvatica* L.) stained with TTC (2,3,5-triphenyltetrazolium chloride) as a vitality test. **(a)** High vitality and flushing capability; **(b)** reduced vitality; **(c)** sub-vital. See the main text for further explanation.