

Supplementary files

Supplementary figures

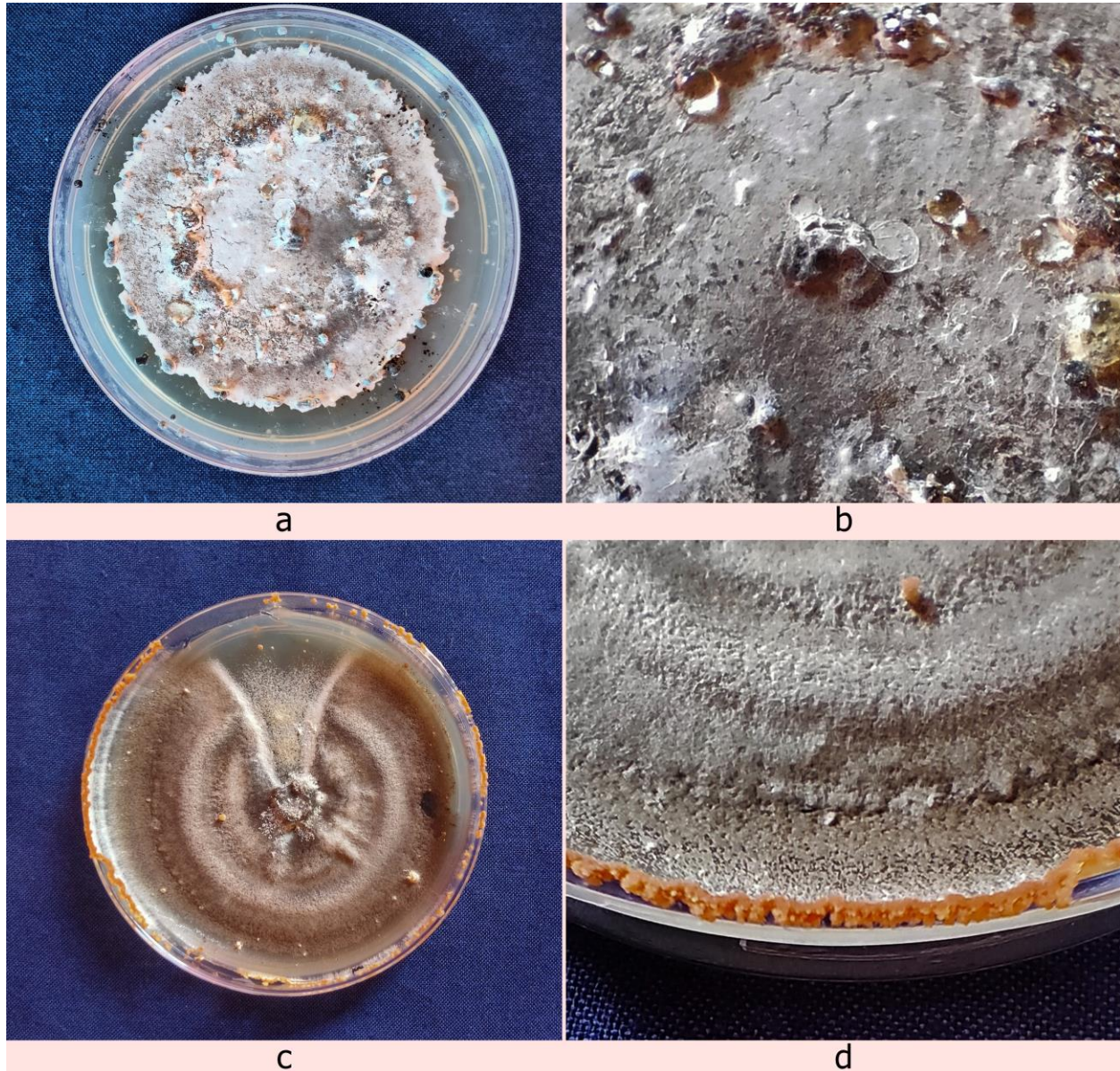


Figure S1. Initial isolation of mycoparasitic fungi, *C. rosea* from infected sclerotia

- a- Mycoparasitized sclerotia placed in PDA medium
- b- Presence of infection even in the secondary sclerotia
- c- Gradual overgrowth of *C. rosea* growth from the infected sclerotia
- d- Sporodochial growth over the plate

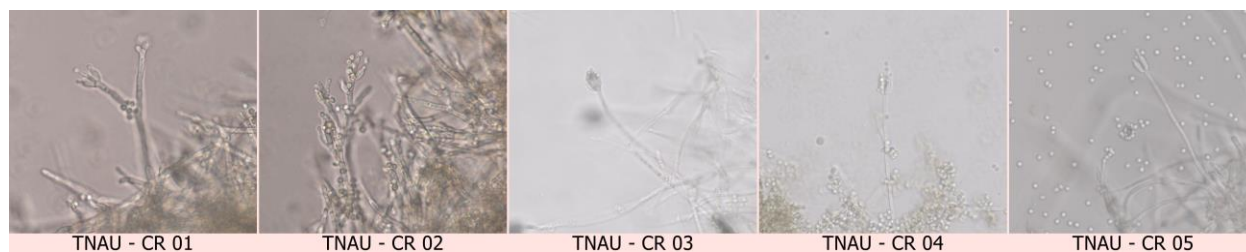


Figure S2. Microscopic examination of fungal mycelium of *C. rosea* isolates under 40x magnification

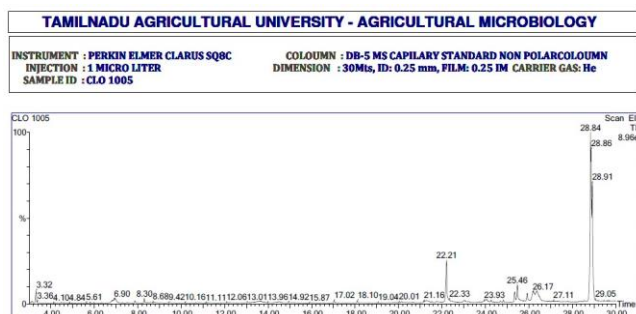


Figure S3. Chromatogram showing the peaks of compounds in the fractions of *C. rosea* TNAU - CR 02

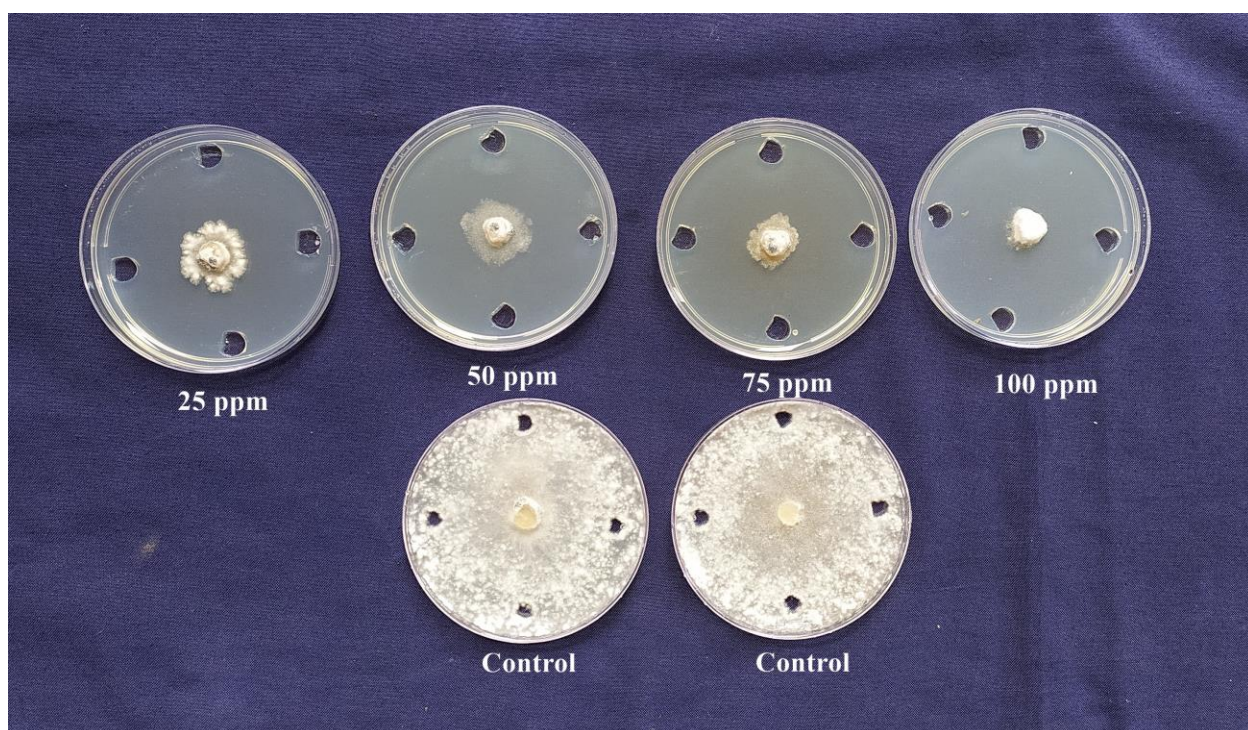


Figure S4. Bioassay of crude antibiotics of *C. rosea* TNAU - CR 02 against *S. sclerotiorum*

Supplementary table

Table S1. Colony morphology, pigmentation, and sporulation of *C. rosea* isolates

Isolate	Morphology	Pigmentation	Sporodochia coloration
TNAU – CR 01	Whitish yellow sparse mycelium	Light yellow	Orange
TNAU – CR 02	Slight yellow sparse mycelium	Light yellow	Orange
TNAU – CR 03	White with light greyish mycelium	whitish yellow	Orange
TNAU – CR 04	Dark Yellow dense mycelium	Dark yellow	Light Orange
TNAU – CR 05	Whitish yellow sparse mycelium	Light yellow	Orange

Table S2. Bioassay of crude antibiotics of *C. rosea* TNAU – CR 02 against *S. sclerotiorum*

Sl.No.	Concentration	Percent inhibition over control
5	25 ppm	82.17 (65.02) ^b
6	50 ppm	87.42 (69.22) ^b
7	75 ppm	92.33 (73.93) ^a
8	100 ppm	97.17 (80.32) ^a

* Values are means of three replications,

Means in a column followed by same superscript letters are on par with each other according to LSD; Figures in parentheses represent arcsine transformation.