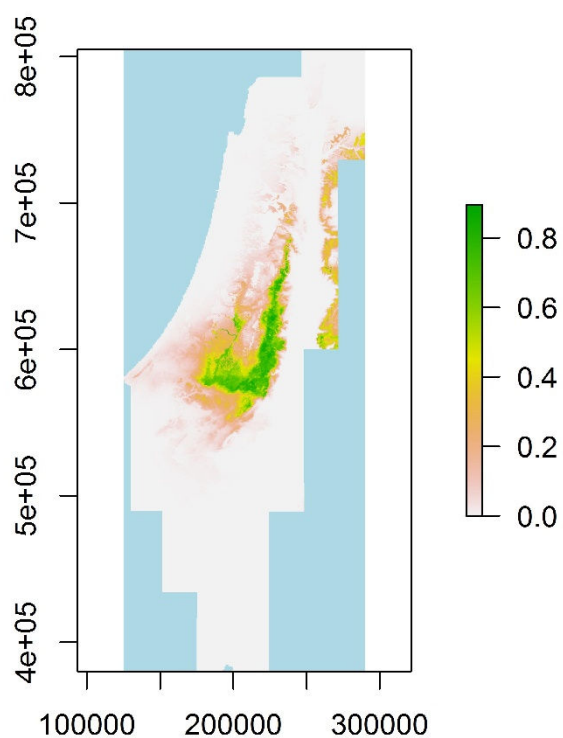
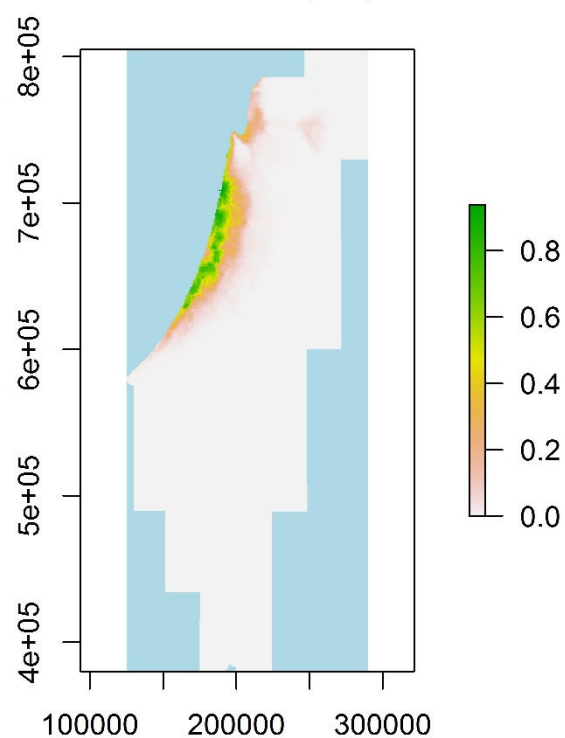


Maxent, *Iris atrofusca*

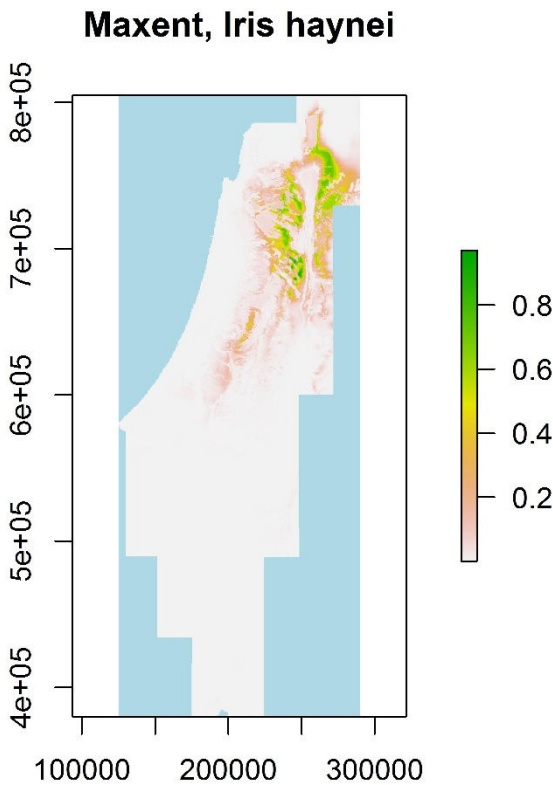
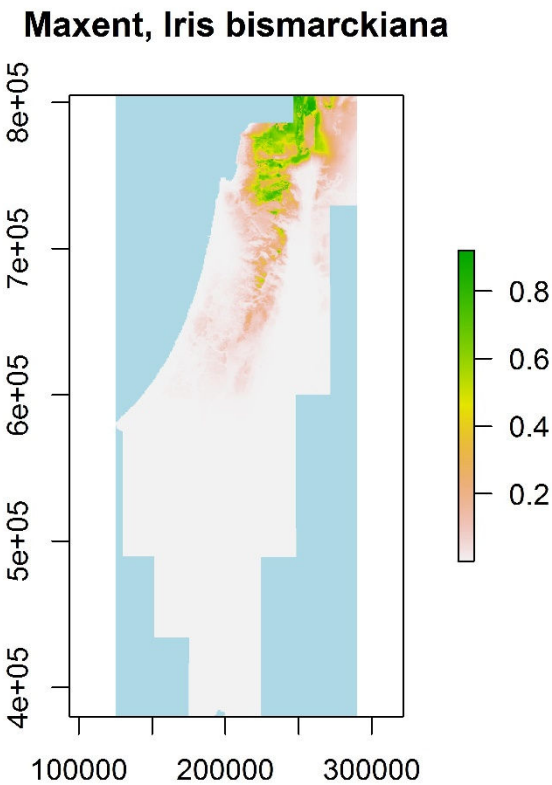


Maxent, *Iris atropurpurea*



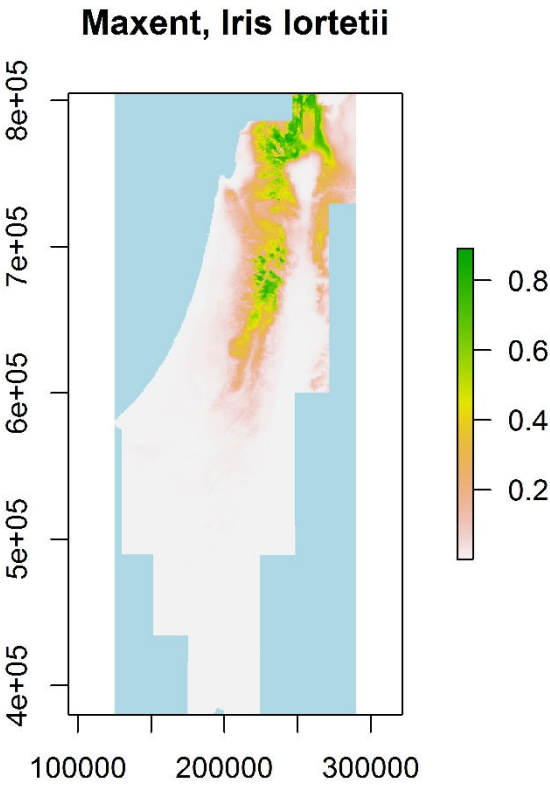
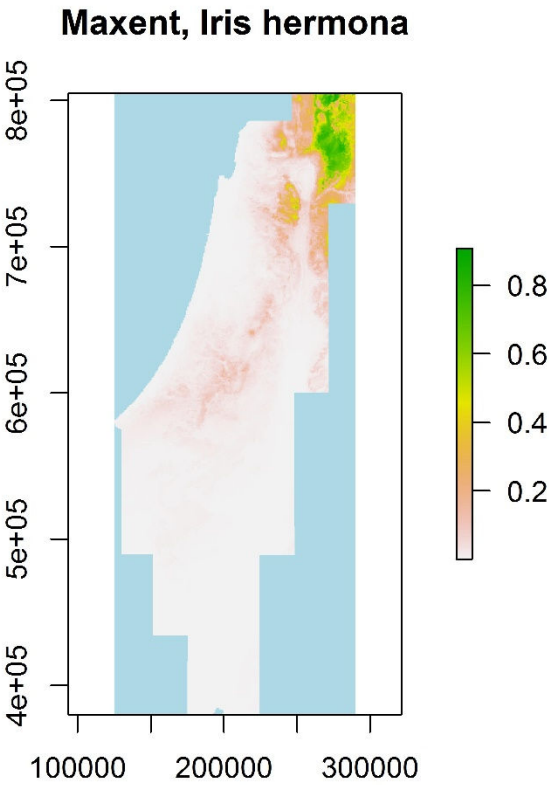
A.

B.



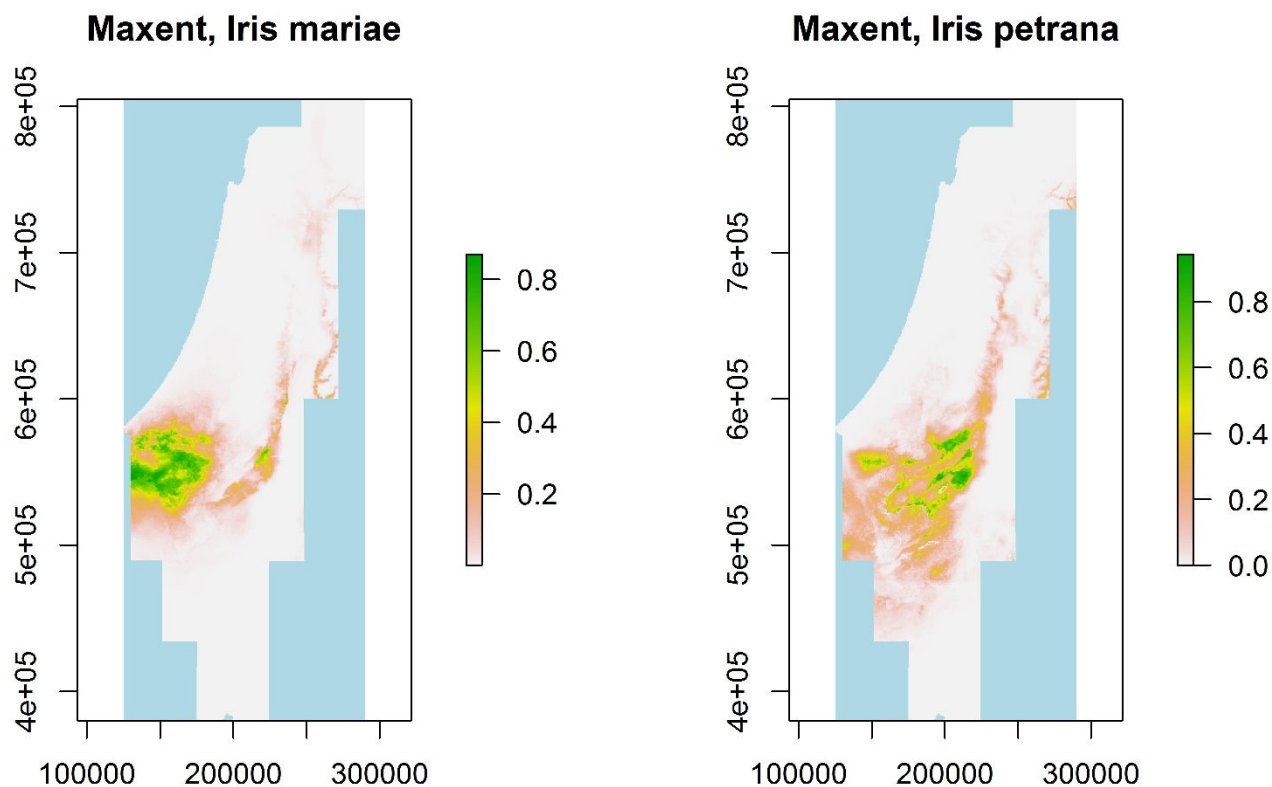
C.

D.



E.

F.



G.

H.

Figure S3 – The potential distribution of the eight Israeli *Oncocyclus* Irises, as predicted by the SDMs, performed with MaxEnt. A. *Iris atrofusca*; B. *I. atropurpurea*; C. *I. bismarckiana*; D. *I. haynei*; E. *I. hermona*; F. *I. lortetii*; G. *I. mariae*; H. *I. petrana*.