

Figure S1. The ML phylogenetic cladogram of *Axyris* derived from nrITS. Posterior probabilities resulting from the Bayesian analysis are indicated above branches (only values ≥ 0.9); the numbers below branches refer to bootstrap values resulting from the ML analysis (only values ≥ 70).

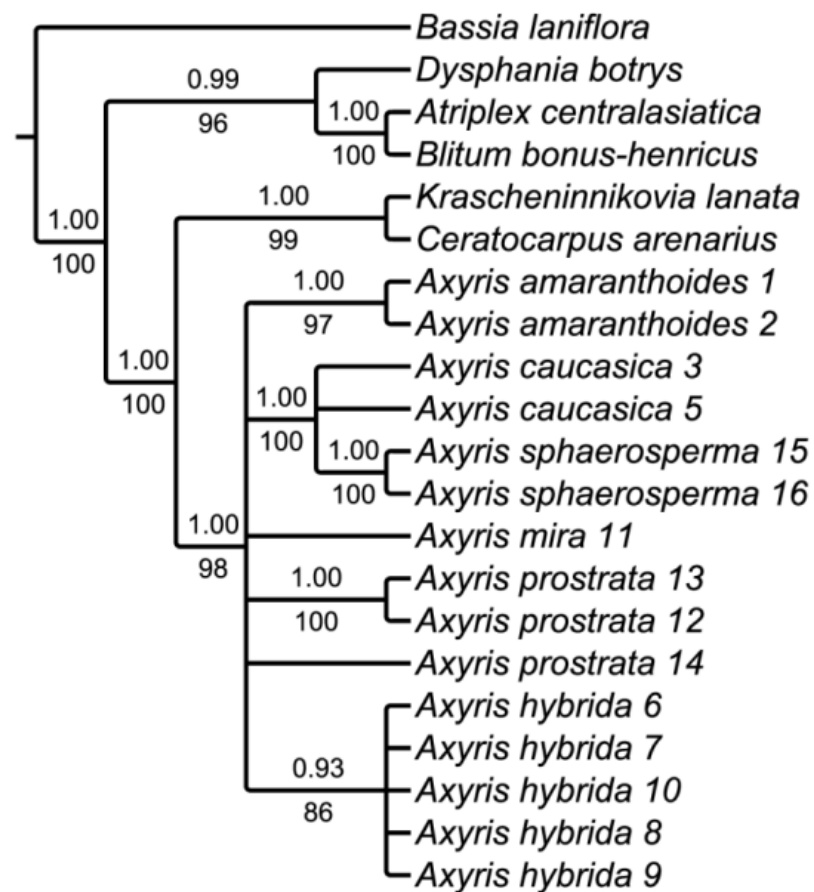


Figure S2. The ML phylogenetic cladogram of *Axyris* derived from the combined plastid matrix (rbcL, atpB-rbcL, and trnL-F). Posterior probabilities resulting from the Bayesian analysis are indicated above branches (only values ≥ 0.9), and the numbers below branches denote bootstrap values resulting from the ML analysis (only values ≥ 70).