

Figure S1. qRT-PCR validation of selected *GhNACs*. *GhUBQ7* is used as an internal reference gene and data are means \pm SD from three biological replicates. Different letters indicate significant differences, $p < 0.05$ (ANOVA test).

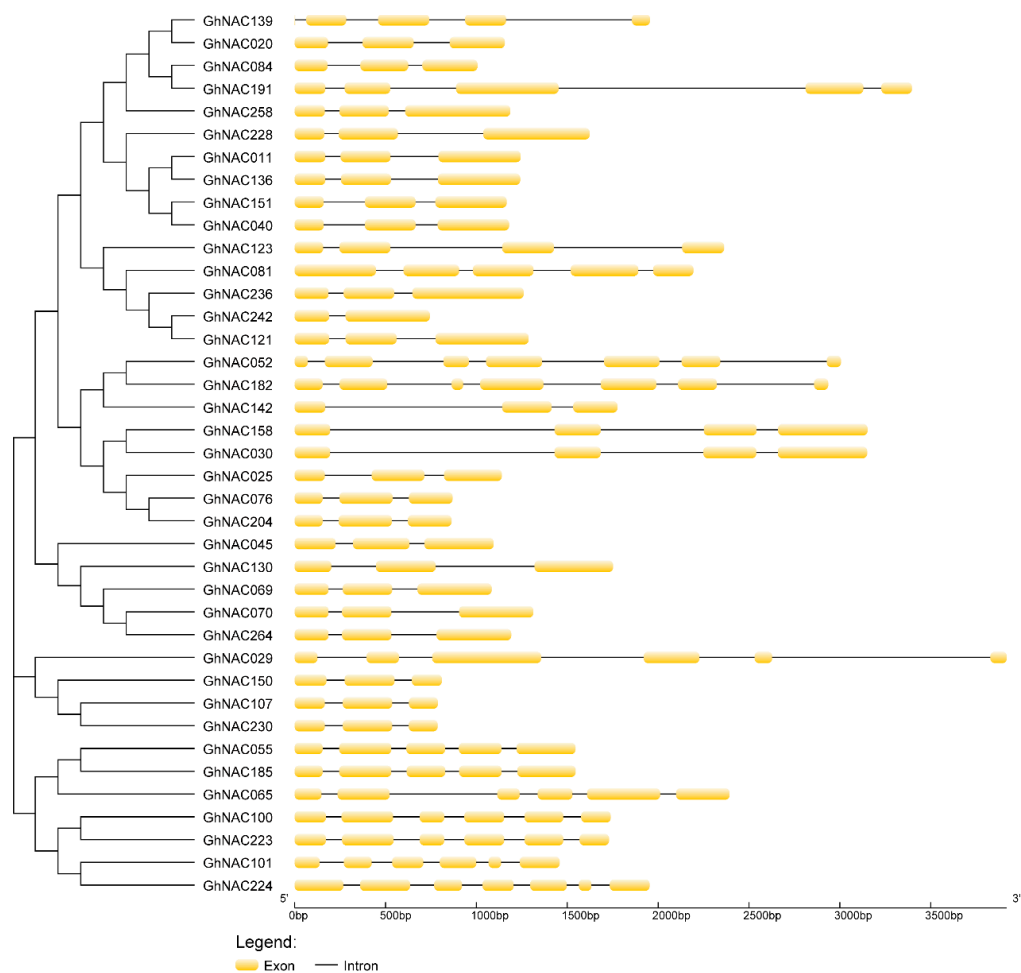


Figure S2. Exon-intron structure analysis of DEGs in putative *GhNACs*. Phylogenetic tree of DEGs constructed with MEGA 7.0 by the NJ method.

Bootstrap values from 1000 replicates are indicated at each branch.

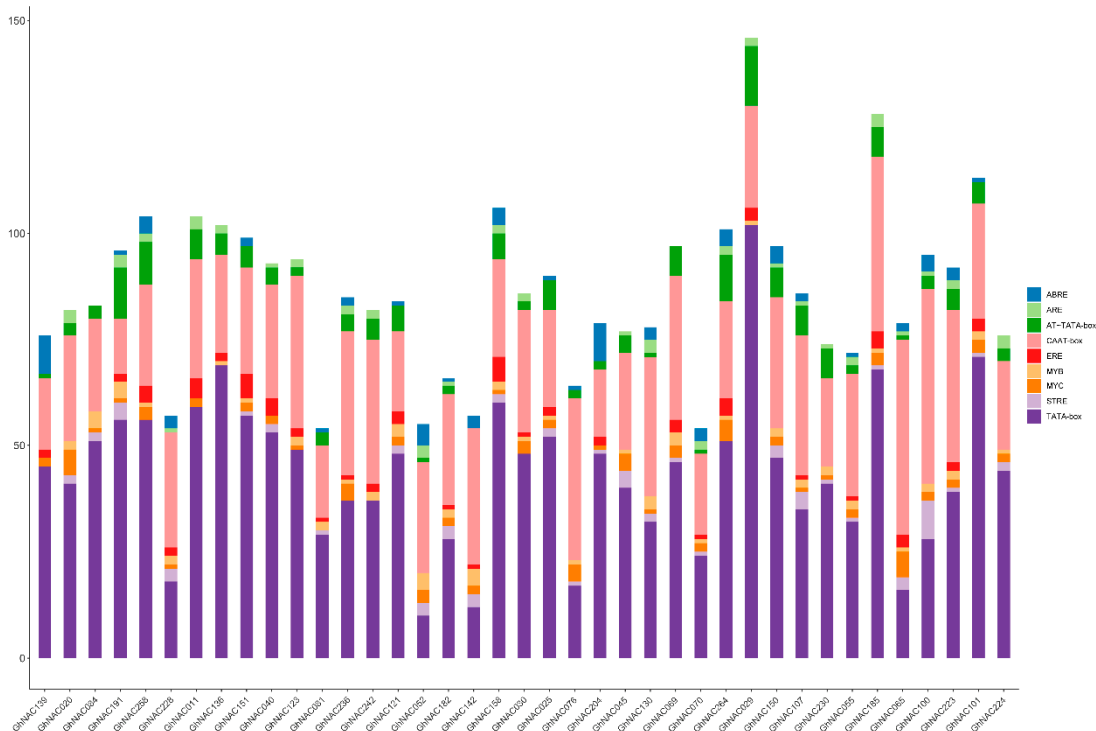


Figure S3. cis-Element analysis of DEGs in putative *GhNACs* promoters. Different cis-elements with the same or similar functions are shown in the same color.