

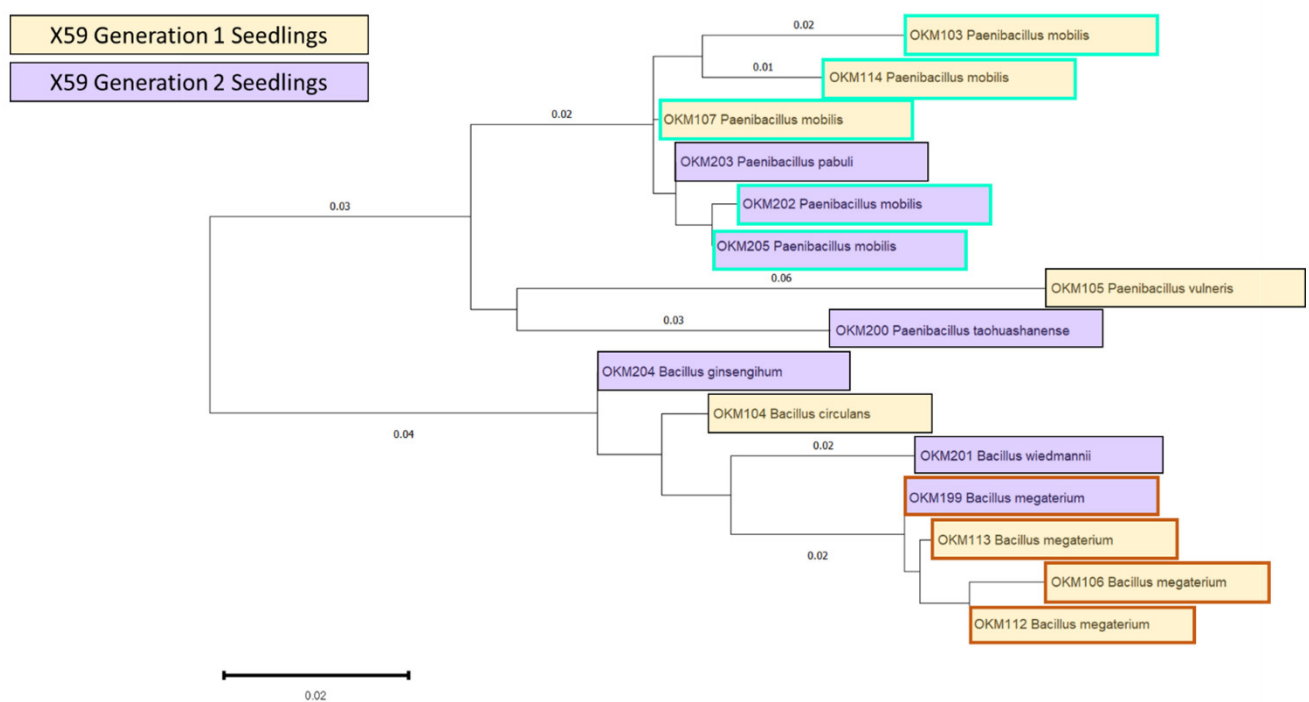
**Table S1.** Isolate Metadata.

Sample ID	Taxonomy	Kingdom	Host	Genotype	Tissue	Media	Protocol	Surface sterilization
OKM58	<i>Paenibacillus mobilis</i>	Bacteria	Hemp	Canda	Seedling	TSA	Maceration	Bleach+EtOH
OKM59	<i>Pantoea agglomerans</i>	Bacteria	Hemp	Canda	Seedling	TSA	Maceration	Bleach+EtOH
OKM60	<i>Paenibacillus mobilis</i>	Bacteria	Hemp	Canda	Seedling	TSA	Maceration	Bleach+EtOH
OKM62	<i>Paenibacillus mobilis</i>	Bacteria	Hemp	Canda	Seedling	TSA	Maceration	Bleach+EtOH
OKM63	<i>Paenibacillus mobilis</i>	Bacteria	Hemp	Canda	Seedling	TSA	Maceration	Bleach+EtOH
OKM64	<i>Paenibacillus mobilis</i>	Bacteria	Hemp	Canda	Seedling	R2A	Maceration	Bleach+EtOH
OKM65	<i>Paenibacillus mobilis</i>	Bacteria	Hemp	Canda	Seedling	R2A	Maceration	Bleach+EtOH
OKM67	<i>Paenibacillus mobilis</i>	Bacteria	Hemp	Canda	Seedling	R2A	Maceration	Bleach+EtOH
OKM68	<i>Paenibacillus mobilis</i>	Bacteria	Hemp	Canda	Seedling	R2A	Maceration	Bleach+EtOH
OKM69	<i>Paenibacillus mobilis</i>	Bacteria	Hemp	Canda	Seedling	R2A	Maceration	Bleach+EtOH
OKM76	<i>Paenibacillus mobilis</i>	Bacteria	Marijuana	White Widow	Seedling	R2A	Maceration	Bleach+EtOH
OKM77	<i>Paenibacillus illinoisensis</i>	Bacteria	Marijuana	White Widow	Seedling	R2A	Maceration	Bleach+EtOH
OKM78	<i>Bacillus megaterium</i>	Bacteria	Marijuana	White Widow	Seedling	R2A	Maceration	Bleach+EtOH
OKM79	<i>Paenibacillus illinoisensis</i>	Bacteria	Marijuana	White Widow	Seedling	R2A	Maceration	Bleach+EtOH
OKM80	<i>Paenibacillus illinoisensis</i>	Bacteria	Marijuana	White Widow	Seedling	R2A	Maceration	Bleach+EtOH
OKM81	<i>Paenibacillus illinoisensis</i>	Bacteria	Marijuana	White Widow	Seedling	R2A	Maceration	Bleach+EtOH
OKM82	<i>Paenibacillus illinoisensis</i>	Bacteria	Marijuana	White Widow	Seedling	R2A	Maceration	Bleach+EtOH
OKM83	<i>Paenibacillus illinoisensis</i>	Bacteria	Marijuana	Afghani	Seedling	TSA	Maceration	Bleach+EtOH
OKM84	<i>Paenibacillus taohuashanense</i>	Bacteria	Marijuana	Afghani	Seedling	TSA	Maceration	Bleach+EtOH
OKM85	<i>Paenibacillus pabuli</i>	Bacteria	Marijuana	Afghani	Seedling	TSA	Maceration	Bleach+EtOH
OKM86	<i>Paenibacillus pabuli</i>	Bacteria	Marijuana	Afghani	Seedling	TSA	Maceration	Bleach+EtOH
OKM87	<i>Paenibacillus mobilis</i>	Bacteria	Marijuana	Afghani	Seedling	TSA	Maceration	Bleach+EtOH
OKM88	<i>Paenibacillus pabuli</i>	Bacteria	Marijuana	White Widow	Seedling	TSA	Maceration	Bleach+EtOH
OKM89	<i>Paenibacillus mobilis</i>	Bacteria	Marijuana	White Widow	Seedling	TSA	Maceration	Bleach+EtOH
OKM90	<i>Paenibacillus pabuli</i>	Bacteria	Marijuana	God's Pink	Seedling	R2A	Maceration	Bleach+EtOH
OKM92	<i>Paenibacillus mobilis</i>	Bacteria	Marijuana	God's Pink	Seedling	R2A	Maceration	Bleach+EtOH
OKM93	<i>Paenibacillus mobilis</i>	Bacteria	Marijuana	God's Pink	Seedling	TSA	Maceration	Bleach+EtOH
OKM94	<i>Bacillus megaterium</i>	Bacteria	Marijuana	God's Pink	Seedling	R2A	Maceration	Bleach+EtOH
OKM95	<i>Bacillus/Peribacillus simplex</i>	Bacteria	Marijuana	BC Big Bud	Seedling	R2A	Maceration	Bleach+EtOH
OKM96	<i>Bacillus inaquosorum</i>	Bacteria	Marijuana	BC Big Bud	Seedling	TSA	Maceration	Bleach+EtOH
OKM97	<i>Bacillus aerius</i>	Bacteria	Marijuana	BC Big Bud	Seedling	TSA	Maceration	Bleach+EtOH
OKM98	<i>Bacillus stratosphericus</i>	Bacteria	Marijuana	BC Big Bud	Seedling	TSA	Maceration	Bleach+EtOH
OKM99	<i>Paenibacillus mobilis</i>	Bacteria	Marijuana	BC Big Bud	Seedling	TSA	Maceration	Bleach+EtOH
OKM100	<i>Bacillus aerius</i>	Bacteria	Marijuana	BC Big Bud	Seedling	TSA	Maceration	Bleach+EtOH
OKM101	<i>Paenibacillus mobilis</i>	Bacteria	Marijuana	BC Big Bud	Seedling	TSA	Maceration	Bleach+EtOH
OKM102	<i>Paenibacillus pabuli</i>	Bacteria	Marijuana	BC Big Bud	Seedling	TSA	Maceration	Bleach+EtOH
OKM103	<i>Paenibacillus mobilis</i>	Bacteria	Hemp	X-59	Seedling	TSA	Maceration	Bleach+EtOH
OKM104	<i>Bacillus circulans</i>	Bacteria	Hemp	X-59	Seedling	TSA	Maceration	Bleach+EtOH
OKM105	<i>Paenibacillus vulneris</i>	Bacteria	Hemp	X-59	Seedling	TSA	Maceration	Bleach+EtOH
OKM106	<i>Bacillus megaterium</i>	Bacteria	Hemp	X-59	Seedling	R2A	Maceration	Bleach+EtOH
OKM107	<i>Paenibacillus mobilis</i>	Bacteria	Hemp	X-59	Seedling	R2A	Maceration	Bleach+EtOH
OKM108	<i>Brevibacillus choshinensis</i>	Bacteria	Marijuana	BC Big Bud	Seedling	R2A	Maceration	Bleach+EtOH
OKM109	<i>Paenibacillus taohuashanense</i>	Bacteria	Marijuana	BC Big Bud	Seedling	R2A	Maceration	Bleach+EtOH
OKM110	<i>Paenibacillus mobilis</i>	Bacteria	Marijuana	BC Big Bud	Seedling	R2A	Maceration	Bleach+EtOH
OKM111	<i>Paenibacillus pabuli</i>	Bacteria	Marijuana	BC Big Bud	Seedling	R2A	Maceration	Bleach+EtOH
OKM112	<i>Bacillus megaterium</i>	Bacteria	Hemp	X-59	Seedling	TSA	Maceration	Bleach+EtOH
OKM113	<i>Bacillus megaterium</i>	Bacteria	Hemp	X-59	Seedling	TSA	Maceration	Bleach+EtOH
OKM114	<i>Paenibacillus mobilis</i>	Bacteria	Hemp	X-59	Seedling	R2A	Maceration	Bleach+EtOH
OKM115	<i>Bacillus subtilis</i>	Bacteria	Marijuana	BC Big Bud	Seedling	R2A	Maceration	Bleach+EtOH
OKM116	<i>Paenibacillus mobilis</i>	Bacteria	Marijuana	BC Big Bud	Seedling	R2A	Maceration	Bleach+EtOH
OKM117	<i>Brevibacillus choshinensis</i>	Bacteria	Marijuana	BC Big Bud	Seedling	R2A	Maceration	Bleach+EtOH
OKM118	<i>Paenibacillus mobilis</i>	Bacteria	Marijuana	God's Bud	Seedling	R2A	Maceration	Bleach+EtOH
OKM119	<i>Bacillus/Peribacillus simplex</i>	Bacteria	Marijuana	God's Bud	Seedling	R2A	Maceration	Bleach+EtOH

OKM120	<i>Paenibacillus mobilis</i>	Bacteria	Marijuana	God's Bud	Seedling	R2A	Maceration	Bleach+EtOH
OKM121	<i>Bacillus subtilis</i>	Bacteria	Marijuana	God's Bud	Seedling	TSA	Maceration	Bleach+EtOH
OKM122	<i>Paenibacillus mobilis</i>	Bacteria	Marijuana	God's Bud	Seedling	TSA	Maceration	Bleach+EtOH
OKM123	<i>Brevibacillus choshinensis</i>	Bacteria	Marijuana	God's Bud	Seedling	TSA	Maceration	Bleach+EtOH
OKM124	<i>Paenibacillus mobilis</i>	Bacteria	Marijuana	BC Big Bud	Seedling	R2A	Maceration	Bleach+EtOH
OKM125	<i>Bacillus/Peribacillus simplex</i>	Bacteria	Marijuana	BC Big Bud	Seedling	R2A	Maceration	Bleach+EtOH
OKM126	<i>Paenibacillus mobilis</i>	Bacteria	Marijuana	God's Bud	Seedling	TSA	Maceration	Bleach+EtOH
OKM127	<i>Paenibacillus mobilis</i>	Bacteria	Hemp	CAN 3797	Seedling	R2A	Maceration	Bleach+EtOH
OKM128	<i>Bacillus subtilis</i>	Bacteria	Hemp	CAN 3797	Seedling	R2A	Maceration	Bleach+EtOH
OKM129	<i>Paenibacillus mobilis</i>	Bacteria	Hemp	CAN 3797	Seedling	R2A	Maceration	Bleach+EtOH
OKM130	<i>Paenibacillus taohuashanense</i>	Bacteria	Hemp	CAN 3797	Seedling	R2A	Maceration	Bleach+EtOH
OKM131	<i>Bacillus subtilis</i>	Bacteria	Hemp	CAN 3797	Seedling	R2A	Maceration	Bleach+EtOH
OKM132	<i>Bacillus megaterium</i>	Bacteria	Hemp	CAN 3797	Seedling	R2A	Maceration	Bleach+EtOH
OKM133	<i>Bacillus megaterium</i>	Bacteria	Hemp	CAN 3797	Seedling	TSA	Maceration	Bleach+EtOH
OKM134	<i>Paenibacillus vulneris</i>	Bacteria	Hemp	CAN 3797	Seedling	TSA	Maceration	Bleach+EtOH
OKM135	<i>Paenibacillus mobilis</i>	Bacteria	Hemp	CAN 3797	Seedling	TSA	Maceration	Bleach+EtOH
OKM136	<i>Paenibacillus pabuli</i>	Bacteria	Hemp	CAN 3797	Seedling	TSA	Maceration	Bleach+EtOH
OKM137	<i>Paenibacillus mobilis</i>	Bacteria	Hemp	CAN 3797	Seedling	TSA	Maceration	Bleach+EtOH
OKM138	<i>Paenibacillus mobilis</i>	Bacteria	Hemp	CAN 3797	Seedling	TSA	Maceration	Bleach+EtOH
OKM139	<i>Paenibacillus mobilis</i>	Bacteria	Hemp	CAN 3797	Seedling	TSA	Maceration	Bleach+EtOH
OKM140	<i>Paenibacillus mobilis</i>	Bacteria	Hemp	CAN 3797	Seedling	TSA	Maceration	Bleach+EtOH
OKM141	<i>Bacillus velezensis</i>	Bacteria	Hemp	CAN 3797	Seedling	TSA	Maceration	Bleach+EtOH
OKM142	<i>Paenibacillus taohuashanense</i>	Bacteria	Hemp	CAN 3797	Seedling	TSA	Maceration	Bleach+EtOH
OKM143	<i>Bacillus subtilis</i>	Bacteria	Hemp	CAN 3797	Seedling	TSA	Maceration	Bleach+EtOH
OKM144	<i>Paenibacillus mobilis</i>	Bacteria	Hemp	CAN 3797	Seedling	TSA	Maceration	Bleach+EtOH
OKM145	<i>Paenibacillus mobilis</i>	Bacteria	Hemp	Grandi	Seedling	R2A	Maceration	Bleach+EtOH
OKM146	<i>Paenibacillus pabuli</i>	Bacteria	Hemp	Altair	Seedling	TSA	Maceration	Bleach+EtOH
OKM147	<i>Paenibacillus polymyxa</i>	Bacteria	Hemp	Altair	Seedling	TSA	Maceration	Bleach+EtOH
OKM148	<i>Paenibacillus mobilis</i>	Bacteria	Hemp	Altair	Seedling	TSA	Maceration	Bleach+EtOH
OKM149	<i>Bacillus megaterium</i>	Bacteria	Hemp	Altair	Seedling	TSA	Maceration	Bleach+EtOH
OKM150	<i>Paenibacillus vulneris</i>	Bacteria	Hemp	Altair	Seedling	TSA	Maceration	Bleach+EtOH
OKM151	<i>Paenibacillus illinoisensis</i>	Bacteria	Hemp	Katani	Seedling	TSA	Maceration	Bleach+EtOH
OKM153	<i>Paenibacillus yunnanensis</i>	Bacteria	Hemp	Katani	Seedling	TSA	Maceration	Bleach+EtOH
OKM154	<i>Paenibacillus mobilis</i>	Bacteria	Hemp	Katani	Seedling	TSA	Maceration	Bleach+EtOH
OKM155	<i>Paenibacillus polymyxa</i>	Bacteria	Hemp	Katani	Seedling	TSA	Maceration	Bleach+EtOH
OKM156	<i>Paenibacillus illinoisensis</i>	Bacteria	Hemp	Katani	Seedling	TSA	Maceration	Bleach+EtOH
OKM157	<i>Paenibacillus mobilis</i>	Bacteria	Hemp	Grandi	Seedling	TSA	Maceration	Bleach+EtOH
OKM158	<i>Paenibacillus mobilis</i>	Bacteria	Hemp	Altair	Seedling	R2A	Maceration	Bleach+EtOH
OKM159	<i>Paenibacillus mobilis</i>	Bacteria	Hemp	Grandi	Seedling	TSA	Maceration	Bleach+EtOH
OKM160	<i>Paenibacillus polymyxa</i>	Bacteria	Hemp	Altair	Seedling	R2A	Maceration	Bleach+EtOH
OKM161	<i>Paenibacillus mobilis</i>	Bacteria	Hemp	Altair	Seedling	R2A	Maceration	Bleach+EtOH
OKM162	<i>Bacillus subtilis</i>	Bacteria	Hemp	Grandi	Seedling	TSA	Maceration	Bleach+EtOH
OKM163	<i>Bacillus subtilis</i>	Bacteria	Hemp	Altair	Seedling	R2A	Maceration	Bleach+EtOH
OKM165	<i>Paenibacillus mobilis</i>	Bacteria	Hemp	LKCS	Seedling	R2A	Maceration	Bleach+EtOH
OKM166	<i>Paenibacillus mobilis</i>	Bacteria	Hemp	LKCS	Seedling	R2A	Maceration	Bleach+EtOH
OKM167	<i>Paenibacillus mobilis</i>	Bacteria	Hemp	LKCS	Seedling	TSA	Maceration	Bleach+EtOH
OKM168	<i>Paenibacillus mobilis</i>	Bacteria	Hemp	LKCS	Seedling	TSA	Maceration	Bleach+EtOH
OKM169	<i>Bacillus subtilis</i>	Bacteria	Hemp	LKCS	Seedling	TSA	Maceration	Bleach+EtOH
OKM170	<i>Paenibacillus polymyxa</i>	Bacteria	Hemp	FIN34	Seedling	TSA	Maceration	Bleach+EtOH
OKM171	<i>Paenibacillus mobilis</i>	Bacteria	Hemp	FIN34	Seedling	TSA	Maceration	Bleach+EtOH
OKM172	<i>Paenibacillus humicus</i>	Bacteria	Hemp	FIN34	Seedling	TSA	Maceration	Bleach+EtOH
OKM173	<i>Bacillus subtilis</i>	Bacteria	Hemp	FIN34	Seedling	TSA	Maceration	Bleach+EtOH
OKM174	<i>Bacillus megaterium</i>	Bacteria	Hemp	FIN34	Seedling	R2A	Maceration	Bleach+EtOH
OKM175	<i>Paenibacillus mobilis</i>	Bacteria	Hemp	FIN34	Seedling	R2A	Maceration	Bleach+EtOH
OKM176	<i>Paenibacillus sinopodophylli</i>	Bacteria	Hemp	FIN34	Seedling	R2A	Maceration	Bleach+EtOH
OKM177	<i>Paenibacillus terreus</i>	Bacteria	Hemp	FIN34	Seedling	R2A	Maceration	Bleach+EtOH
OKM178	<i>Bacillus zhangzhouensis</i>	Bacteria	Hemp	FIN34	Seedling	R2A	Maceration	Bleach+EtOH
OKM180	<i>Paenibacillus terreus</i>	Bacteria	Hemp	FIN34	Seedling	R2A	Maceration	Bleach+EtOH
OKM181	<i>Paenibacillus terreus</i>	Bacteria	Hemp	FIN34	Seedling	R2A	Maceration	Bleach+EtOH
OKM182	<i>Bacillus subtilis</i>	Bacteria	Hemp	FIN34	Seedling	R2A	Maceration	Bleach+EtOH
OKM183	<i>Paenibacillus pabuli</i>	Bacteria	Hemp	FIN34	Seedling	R2A	Maceration	Bleach+EtOH
OKM184	<i>Paenibacillus mobilis</i>	Bacteria	Hemp	Alyssa	Seedling	TSA	Maceration	Bleach+EtOH

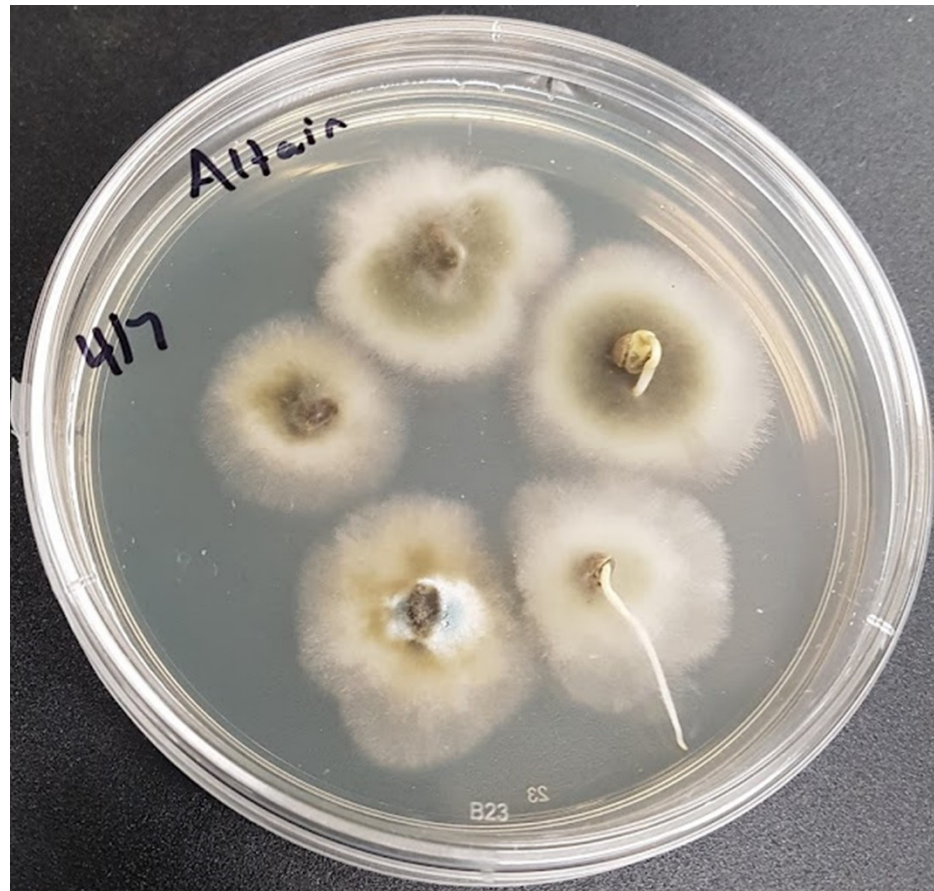
OKM185	<i>Paenibacillus vulneris</i>	Bacteria	Hemp	Alyssa	Seedling	TSA	Maceration	Bleach+EtOH
OKM186	<i>Bacillus subtilis</i>	Bacteria	Hemp	Alyssa	Seedling	TSA	Maceration	Bleach+EtOH
OKM187	<i>Paenibacillus mobilis</i>	Bacteria	Hemp	Alyssa	Seedling	TSA	Maceration	Bleach+EtOH
OKM188	<i>Paenibacillus senegalensis</i>	Bacteria	Hemp	Alyssa	Seedling	TSA	Maceration	Bleach+EtOH
OKM189	<i>Bacillus zhangzhouensis</i>	Bacteria	Hemp	Alyssa	Seedling	TSA	Maceration	Bleach+EtOH
OKM190	<i>Paenibacillus mobilis</i>	Bacteria	Hemp	Alyssa	Seedling	TSA	Maceration	Bleach+EtOH
OKM191	<i>Paenibacillus azotifigens</i>	Bacteria	Hemp	Alyssa	Seedling	TSA	Maceration	Bleach+EtOH
OKM192	<i>Bacillus/Peribacillus simplex</i>	Bacteria	Hemp	Alyssa	Seedling	R2A	Maceration	Bleach+EtOH
OKM193	<i>Bacillus zhangzhouensis</i>	Bacteria	Hemp	Alyssa	Seedling	R2A	Maceration	Bleach+EtOH
OKM194	<i>Bacillus/Peribacillus simplex</i>	Bacteria	Hemp	Alyssa	Seedling	R2A	Maceration	Bleach+EtOH
OKM195	<i>Paenibacillus taohuashanense</i>	Bacteria	Hemp	Alyssa	Seedling	R2A	Maceration	Bleach+EtOH
OKM196	<i>Bacillus subtilis</i>	Bacteria	Hemp	FIN34	Seedling	TSA	Maceration	Bleach+EtOH
OKM197	<i>Bacillus/Peribacillus simplex</i>	Bacteria	Hemp	FIN34	Seedling	TSA	Maceration	Bleach+EtOH
OKM198	<i>Psychrobacter pulmonis</i>	Bacteria	Marijuana	God's Bud	Seedling	TSA	Maceration	Bleach+EtOH
OKM199	<i>Bacillus megaterium</i>	Bacteria	Hemp	X59 Gen2	Seedling	R2A	Maceration	Bleach+EtOH
OKM200	<i>Paenibacillus taohuashanense</i>	Bacteria	Hemp	X59 Gen2	Seedling	R2A	Maceration	Bleach+EtOH
OKM201	<i>Bacillus wiedmannii</i>	Bacteria	Hemp	X59 Gen2	Seedling	R2A	Maceration	Bleach+EtOH
OKM202	<i>Paenibacillus mobilis</i>	Bacteria	Hemp	X59 Gen2	Seedling	R2A	Maceration	Bleach+EtOH
OKM203	<i>Paenibacillus pabuli</i>	Bacteria	Hemp	X59 Gen2	Seedling	R2A	Maceration	Bleach+EtOH
OKM204	<i>Bacillus ginsengihumi</i>	Bacteria	Hemp	X59 Gen2	Seedling	R2A	Maceration	Bleach+EtOH
OKM205	<i>Paenibacillus mobilis</i>	Bacteria	Hemp	X59 Gen2	Seedling	R2A	Maceration	Bleach+EtOH
OKM339	<i>Bacillus megaterium</i>	Bacteria	Flax	Bethune-muc	Seedling	TSA	Maceration	Bleach+EtOH
OKM340	<i>Bacillus megaterium</i>	Bacteria	Flax	Bethune-muc	Seedling	R2A	Maceration	Bleach+EtOH
PM17	<i>Penicillium brevicompactum</i>	Fungi	Marijuana	God's Bud	Seedling	PDA	Maceration	Bleach+EtOH
PM35	<i>Alternaria destruens</i>	Fungi	Hemp	Altair	Seedling	PDA	Seed germination	
PM36	<i>Penicillium robsamsonii</i>	Fungi	Hemp	Altair	Seedling	PDA	Seed germination	
PM37	<i>Penicillium aurantiogriseum</i>	Fungi	Hemp	Altair	Seedling	PDA	Seed germination	
PM38	<i>Cladosporium crousii</i>	Fungi	Marijuana	BC Big Bud	Seedling	PDA	Seed germination	
PM39	<i>Apiospora marii</i>	Fungi	Marijuana	BC Big Bud	Seedling	PDA	Seed germination	
PM40	<i>Aspergillus fumigatus</i>	Fungi	Hemp	CAN3797	Seedling	PDA	Seed germination	
PM41	<i>Aspergillus fumigatus</i>	Fungi	Hemp	CAN3797	Seedling	PDA	Seed germination	
PM42	<i>Cladosporium crousii</i>	Fungi	Hemp	CAN3797	Seedling	PDA	Seed germination	
PM43	<i>Chaetomium ovatoascomatis</i>	Fungi	Hemp	Fin34	Seedling	PDA	Seed germination	
PM45	<i>Aspergillus cibarius</i>	Fungi	Hemp	Fin34	Seedling	PDA	Seed germination	
PM46	<i>Alternaria destruens</i>	Fungi	Hemp	Grandi	Seedling	PDA	Seed germination	
PM47	<i>Alternaria destruens</i>	Fungi	Hemp	Grandi	Seedling	PDA	Seed germination	
PM48	<i>Alternaria destruens</i>	Fungi	Hemp	Grandi	Seedling	PDA	Seed germination	
PM49	<i>Rhizopus arrhizus</i>	Fungi	Hemp	Katani	Seedling	PDA	Seed germination	
PM50	<i>Penicillium citrinum</i>	Fungi	Hemp	LKCS	Seedling	PDA	Seed germination	
PM51	<i>Aspergillus tubingensis</i>	Fungi	Marijuana	God's Bud	Seedling	PDA	Seed germination	
PM52	<i>Penicillium lanosocoeruleum</i>	Fungi	Marijuana	God's Bud	Seedling	PDA	Seed germination	
PM53	<i>Aureobasidium pullulans</i>	Fungi	Hemp	X-59	Seedling	PDA	Seed germination	
PM54	<i>Hormonema macrosporum</i>	Fungi	Hemp	X-59	Seedling	PDA	Seed germination	
PM55	<i>Hormonema macrosporum</i>	Fungi	Hemp	X-59	Seedling	PDA	Seed germination	
PM56	<i>Condenascus tortuosus</i>	Fungi	Hemp	X59 Gen2	Seedling	PDA	Seed germination	
PM60	<i>Fusarium fujikuroi</i>	Fungi	hemp	VIR 577	Seedling	PDA	Seed germination	
PM61	<i>Penicillium citrinum</i>	Fungi	hemp	VIR 577	Seedling	PDA	Seed germination	
PM62	<i>Aspergillus tubingensis</i>	Fungi	hemp	VIR 577	Seedling	PDA	Seed germination	
PM63	<i>Aspergillus ochraceus</i>	Fungi	hemp	VIR 577	Seedling	PDA	Seed germination	

**Figure S1.** 16S Phylogenetic Tree of Culturable Seed-borne Cannabis Seedling Endophytes Across Hemp X59 Generations.



Strains of *Bacillus megaterium* and *Paenibacillus mobilis* were cultured from two successive generations of Hemp X59 grown to seed. Generation-1 was grown outdoors in soil in Vegreville, AB, Generation-2 was grown indoors in Sunshine Mix in Kelowna, BC. *P. mobilis* isolates are outlined in teal. *B. megaterium* isolates are outlined in orange. Amplicons were aligned using MUSCLE algorithm prior to nearest-neighbor phylogenetic tree was construction using Tamura-Nei model on MEGA software (Version 11.0.11).

**Figure S2.** Altair Seed-Associated Fungi.



*Alternaria* and *Penicillium* growth on germinating Altair hemp seeds 4 days after planting on PDA.