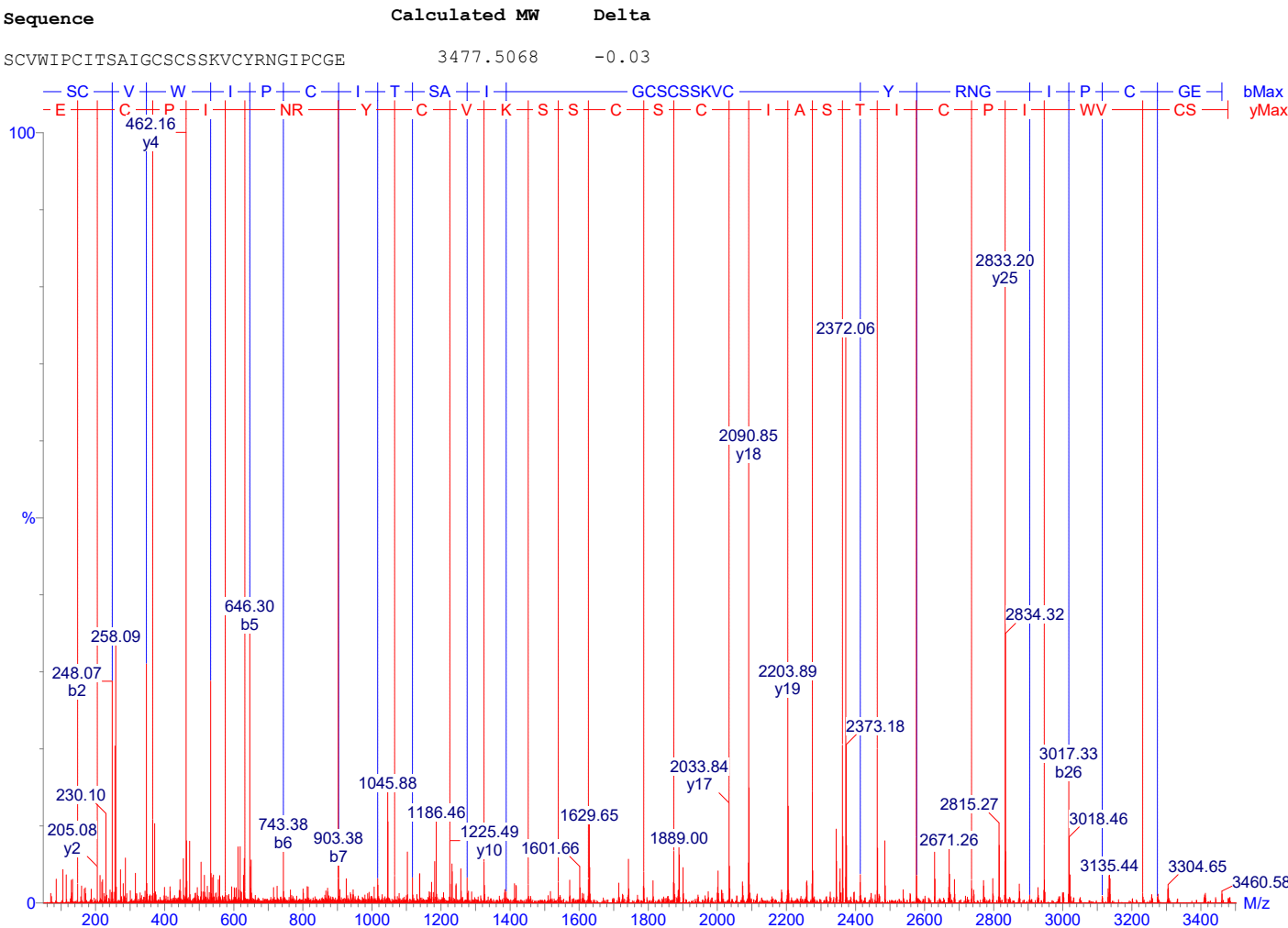


**Figure S2.** MSMS de novo sequencing of the peptide fragment resulting from Glu-C (a) or Clu-C and subsequently trypsin (b, c) cleavage of alkylated vite 1 cyclotide

Observed MW: 3477.5349

**Predicted sequences:**

(a)

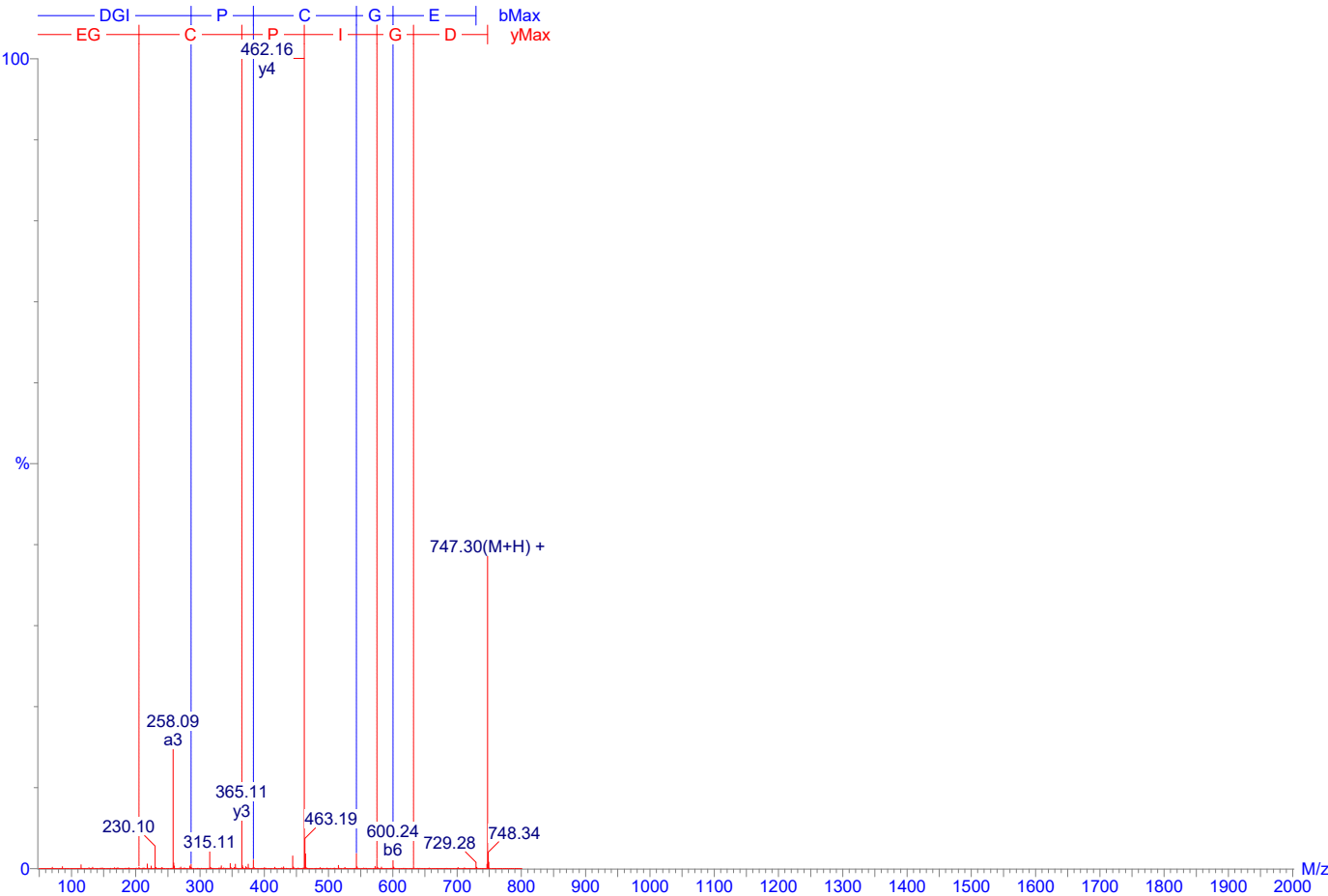


Observed MW: 746.2892

(b)

Predicted sequences:

| Sequence | Rank | Calculated MW | Delta |
|----------|------|---------------|-------|
| DGIPCGE* | 1    | 746.2905      | 0.00  |



\*The peptide was deaminated in the process of alylation therefore the change from N in the native peptide to D in the fragment

Observed MW: 2171.9341

(c)

Predicted sequences:

| Sequence            | Calculated MW | Delta |
|---------------------|---------------|-------|
| SCVWIPCITSAIGCSCSSK | 2171.9473     | 0.01  |

