

Supplementary Material

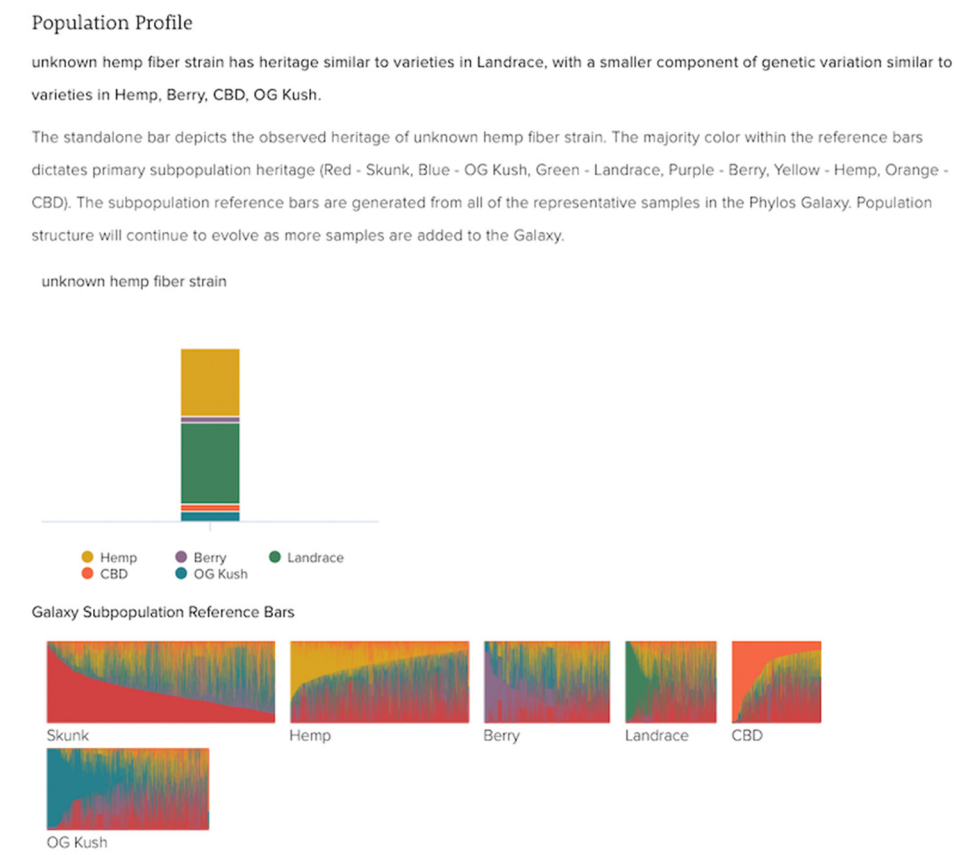


Figure S1. Genetic examination of the hemp strain used in this report by Phylos. The genetic information of this strain is not in their database and the closest variety is Finola. We named this strain “Finola2”. Genetic information Obtained through sending plant material to Phylos galaxy in Washington, USA.

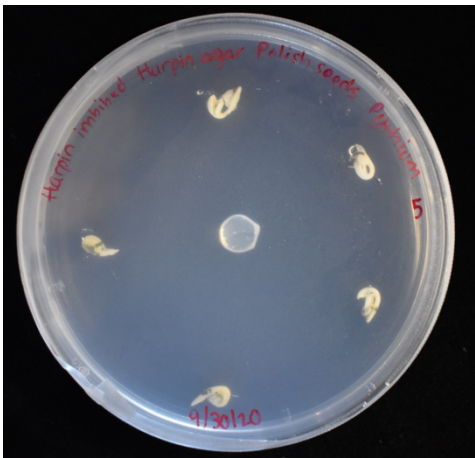


Figure S2. Display of seed placement on the agar plate. Seed coats were removed and placed equidistantly from the edge of the Petri plate and from the mycelial plug containing *Pythium aphanidermatum* in the center of the plate. For Figure 4, no plug was added.

Table S1. Primers used in qPCR. All primers for *Cannabis sativa* were adapted as homologs from the *Arabidopsis thaliana* genome using NCBI and IDTDNA.

Gene	Forward Primer	Reverse Primer
<i>CsUbiquitin</i>	GCCAGGATGGCAATGAAGTA	GCTATAGAGTTGAACTCCACAG
<i>CsERF1</i>	GAAGTCGTACCGAGGCGTTC	TCCACGCATCGAAAAAGCAG
<i>CsEIN5</i>	TCTCTCGACAACCGCTGTAA	TCCATTCATCCCTTCACTAATTTC T
<i>CsEIN2</i>	ACCAGCATCAGCACAACAGA	AACTGCGGTGGTGCATTTTC
<i>CsFRK1</i>	CCTCAAGTGGGTGACTGGG	TCGCTTGGAAGTGAACCGAT
<i>CsPR1</i>	CGGAGAAGGCTGACTACGAC	TAGCACACCCAAGACGAACC