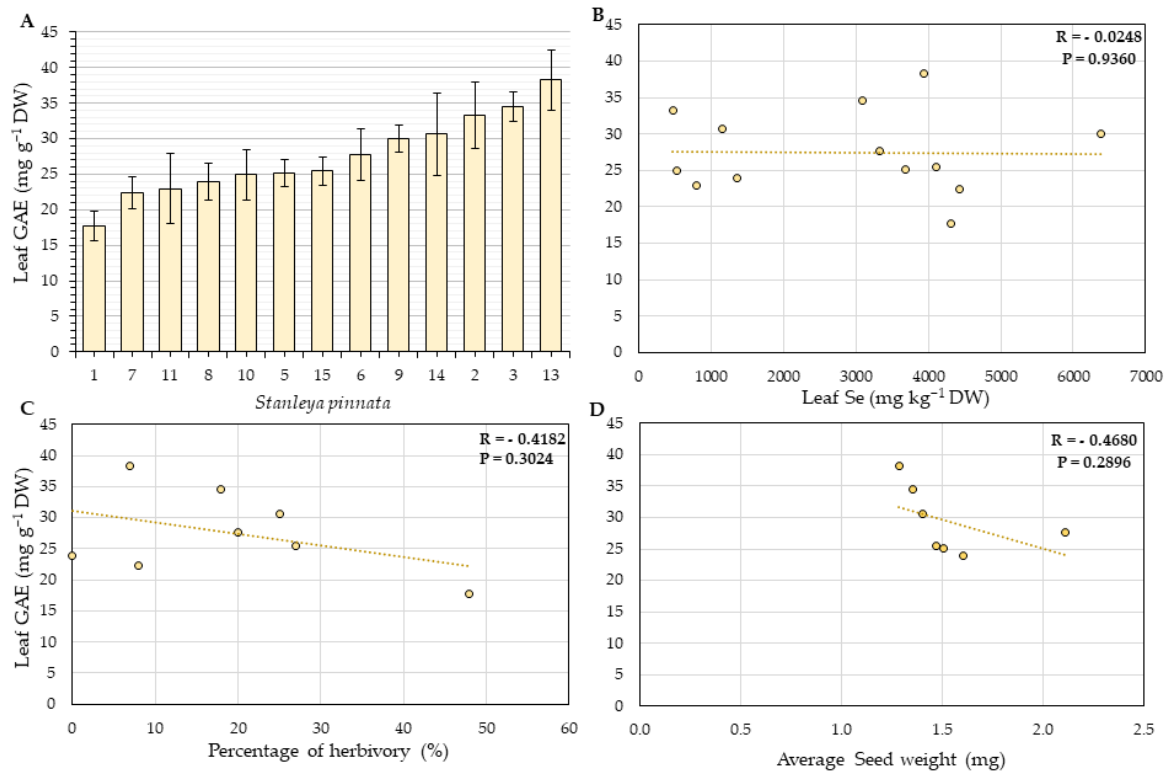


**Supplemental Figure S1.** A: Total phenolics concentration in leaves of *S. pinnata* plants growing at Coyote Ridge (locations indicated in Figure 2), expressed as gallic acid equivalents (GAE). (B-D) Correlation between leaf phenolics and leaf Se concentration (B), and number of leaves (C) and between seed phenolics concentration and average seed weight (D). The numbers on the horizontal axis (A) represent individual plants at the locations indicated in Figures 2. Correlation coefficient  $R$  and  $P$ -value for panels B, C and D are shown in the graphs.



**Supplemental Figure S2.** A: Total phenolics concentration in leaves of *S. pinnata* plants growing at Pine Ridge (locations indicated in Figure 3), expressed as gallic acid equivalents (GAE). (B-D) Correlation between leaf phenolics and leaf Se concentration (B), and number of leaves (C) and between seed phenolics concentration and average seed weight (D). The numbers on the horizontal axis (A) represent individual plants at the locations indicated in Figures 3. Correlation coefficient  $R$  and  $P$ -value for panels B, C and D are shown in the graphs.