

# Supplementary Material

## Hydrosols from *Rosmarinus officinalis*, *Salvia officinalis*, and *Cupressus sempervirens*: Phytochemical analysis and bioactivity evaluation

Matteo Politi <sup>1</sup>, Claudio Ferrante <sup>1</sup>, Luigi Menghini <sup>1</sup>, Paola Angelini <sup>2</sup>, Giancarlo Angeles Flores <sup>2</sup>, Beatrice Muscatello <sup>3,4</sup>, Alessandra Braca <sup>3,4,\*</sup> and Marinella De Leo <sup>3,4</sup>

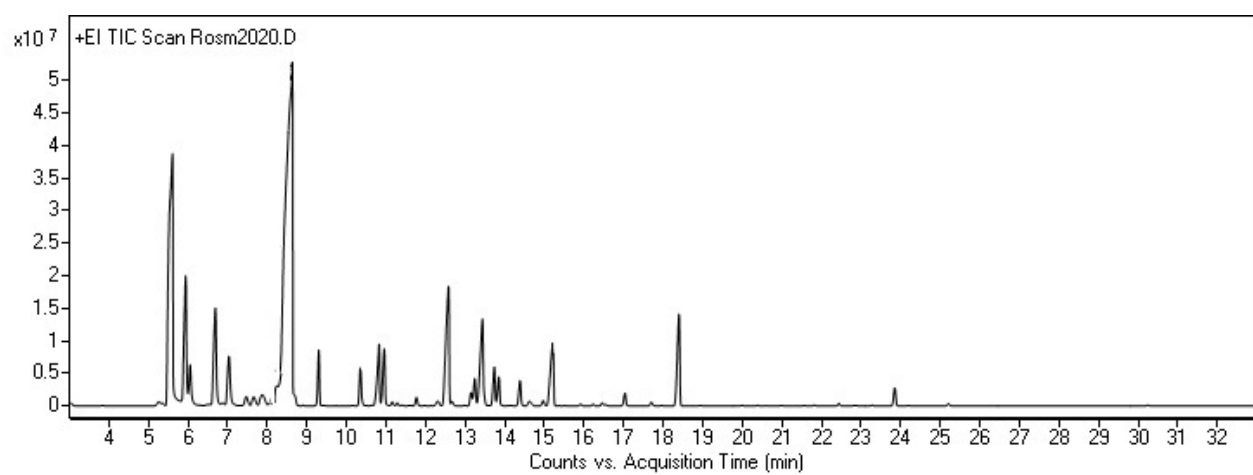
<sup>1</sup> Dipartimento di Farmacia, Botanic garden “Giardino dei Semplici”, Università di Chieti-Pescara, via Vestini 1, 66100, Chieti Scalo, Italy; matteo.politi@unich.it (M.P.); claudio.ferrante@unich.it (C.F.); luigi.menghini@unich.it (L.M.)

<sup>2</sup> Dipartimento di Chimica, Biologia e Biotecnologia, Università di Perugia, Via del Giochetto 6, 06122 Perugia, Italy; paola.angelini@unipg.it (P.A.); giancarlo.angelesflores@studenti.unipg.it (G.A.F.);

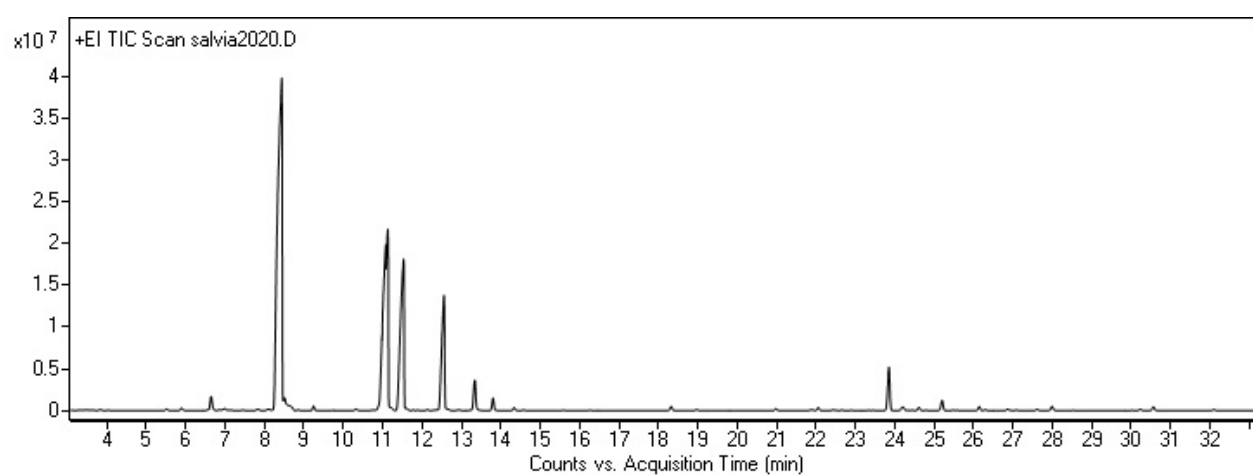
<sup>3</sup> Dipartimento di Farmacia, Università di Pisa, via Bonanno 33, 56126, Pisa, Italy; beatrice.muscatello@unipi.it (B.M.); alessandra.braca@unipi.it (A.B.); marinella.deleo@unipi.it (M.D.L.)

<sup>4</sup> CISUP, Centro per l'Integrazione della Strumentazione dell'Università di Pisa, Lungarno Pacinotti 43, 56126 Pisa, Italy

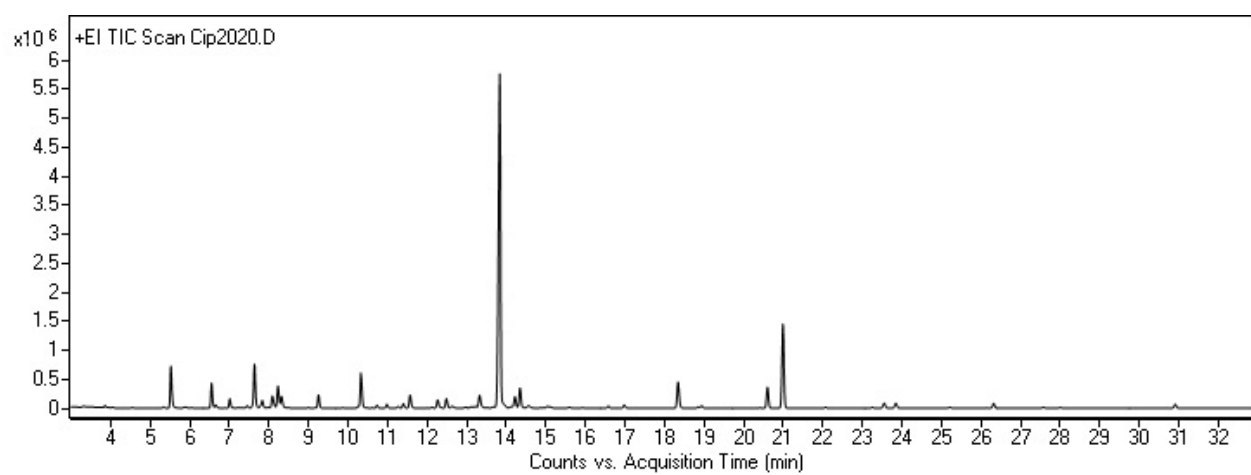
\* Correspondence: alessandra.braca@unipi.it (A.B.); Tel: +39-050-2219688



**Figure S1.** GC-MS chromatogram of rosemary hydrosol headspace.



**Figure S2.** GC-MS chromatogram of sage hydrosol headspace.



**Figure S3.** GC-MS Chromatogram of cypress hydrosol headspace.