

Supplementary Materials

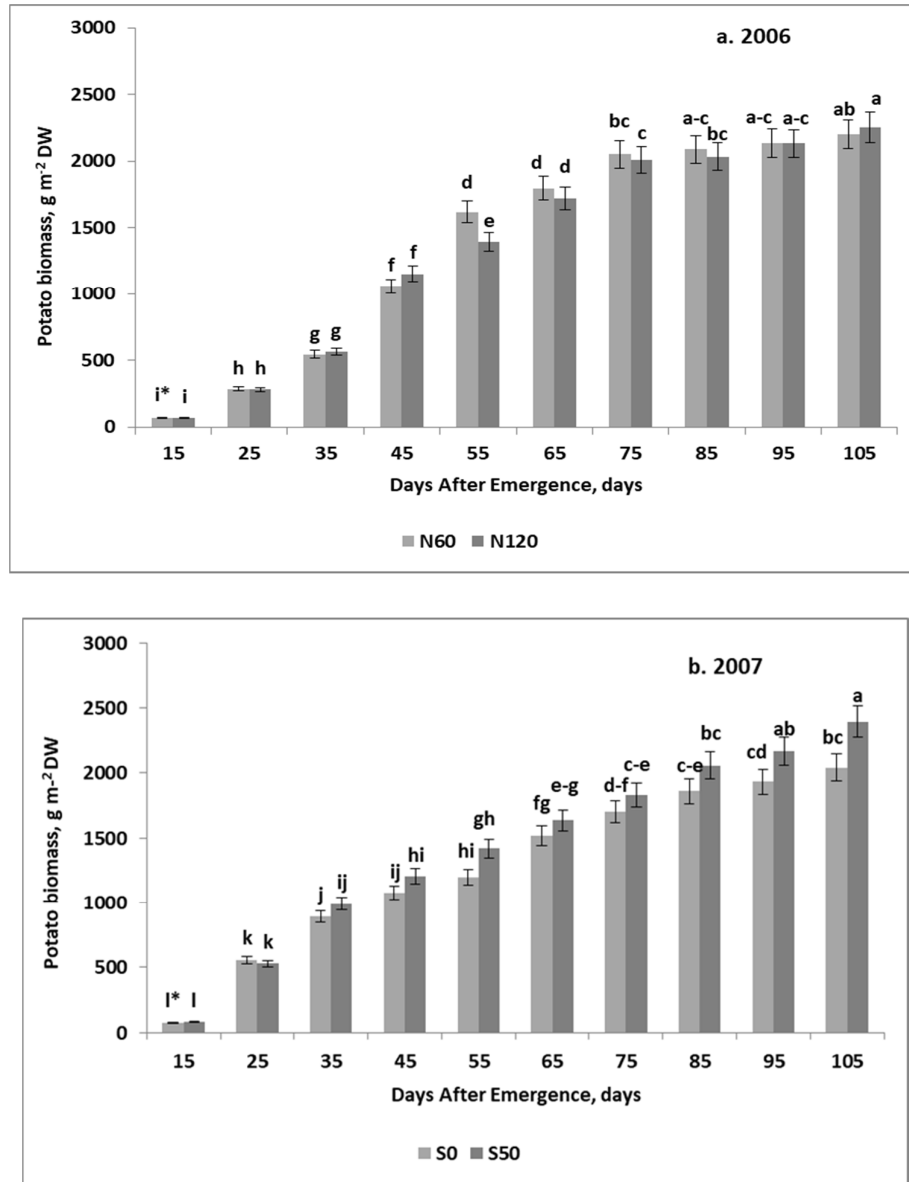
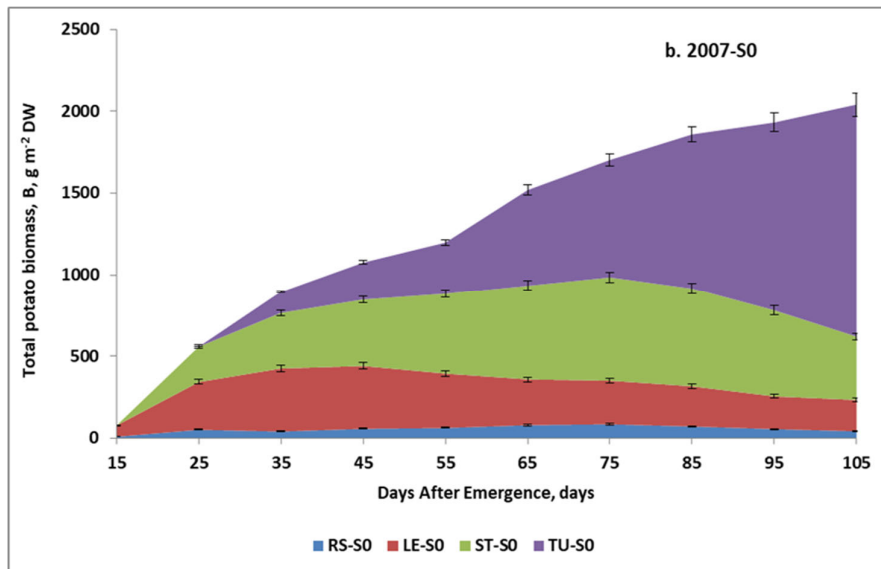
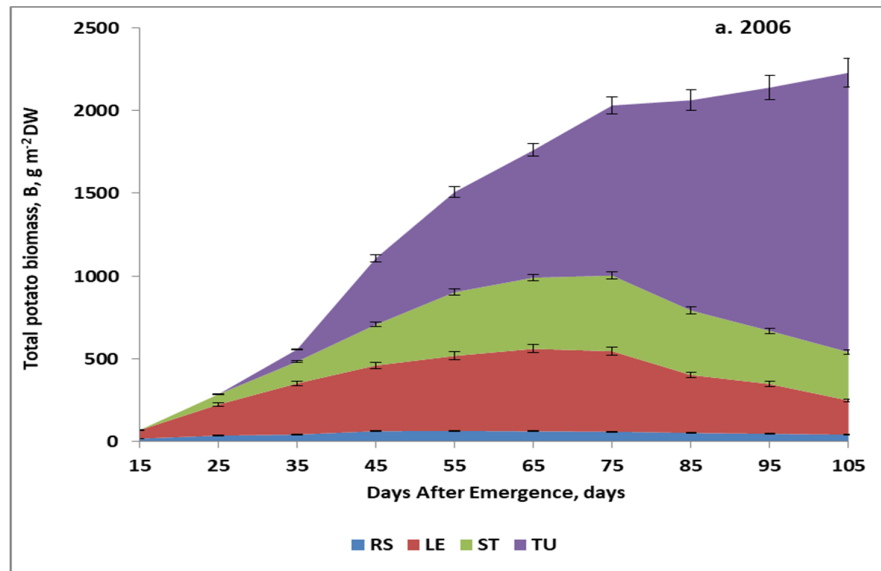


Figure S1. Seasonal trends of potato biomass growth. (a) 2006; (b) 2007. * HSD—calculated separately for each year; letters indicate significant differences between treatments ($p < 0.05$). Legend: S0, S50—sulfur rates of 0 and 50 kg ha⁻¹. Vertical bars represent standard error.



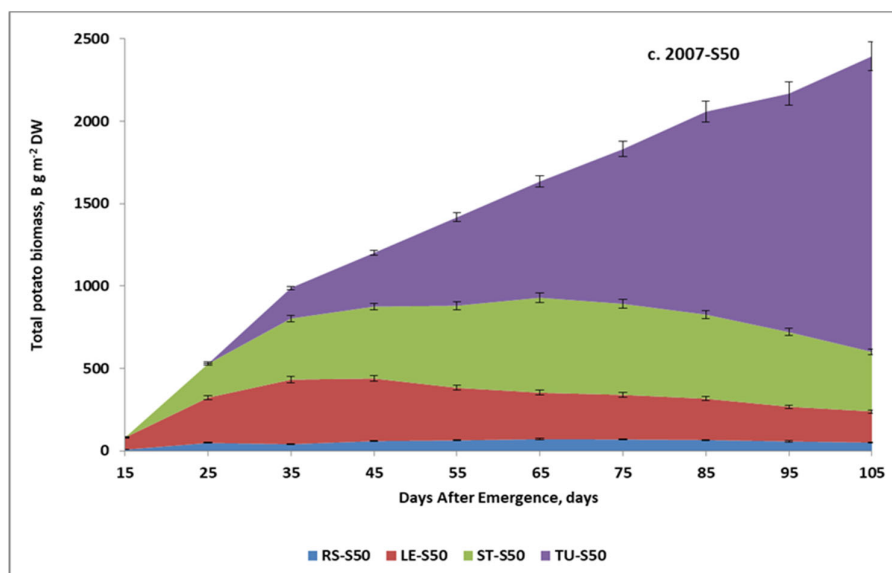
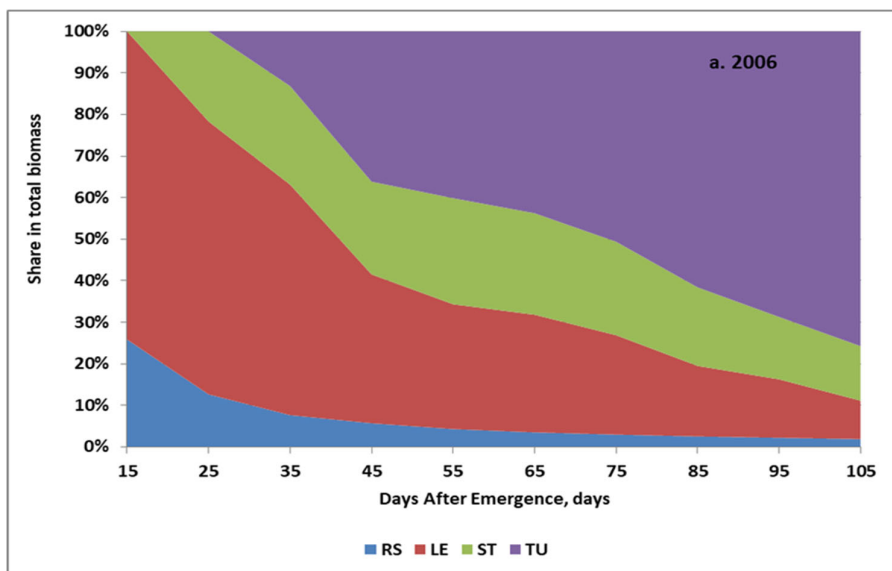


Figure S2. Trends in the potato biomass increase and partitioning between organs. (a) 2006; (b) 2007-S0; (c) 2007-S50. Legend: N60, N120—nitrogen rates of 60 and 120 kg ha^{-1} ; S0, S50—sulfur rates of 0 and 50 kg ha^{-1} . Vertical bars represent standard error.



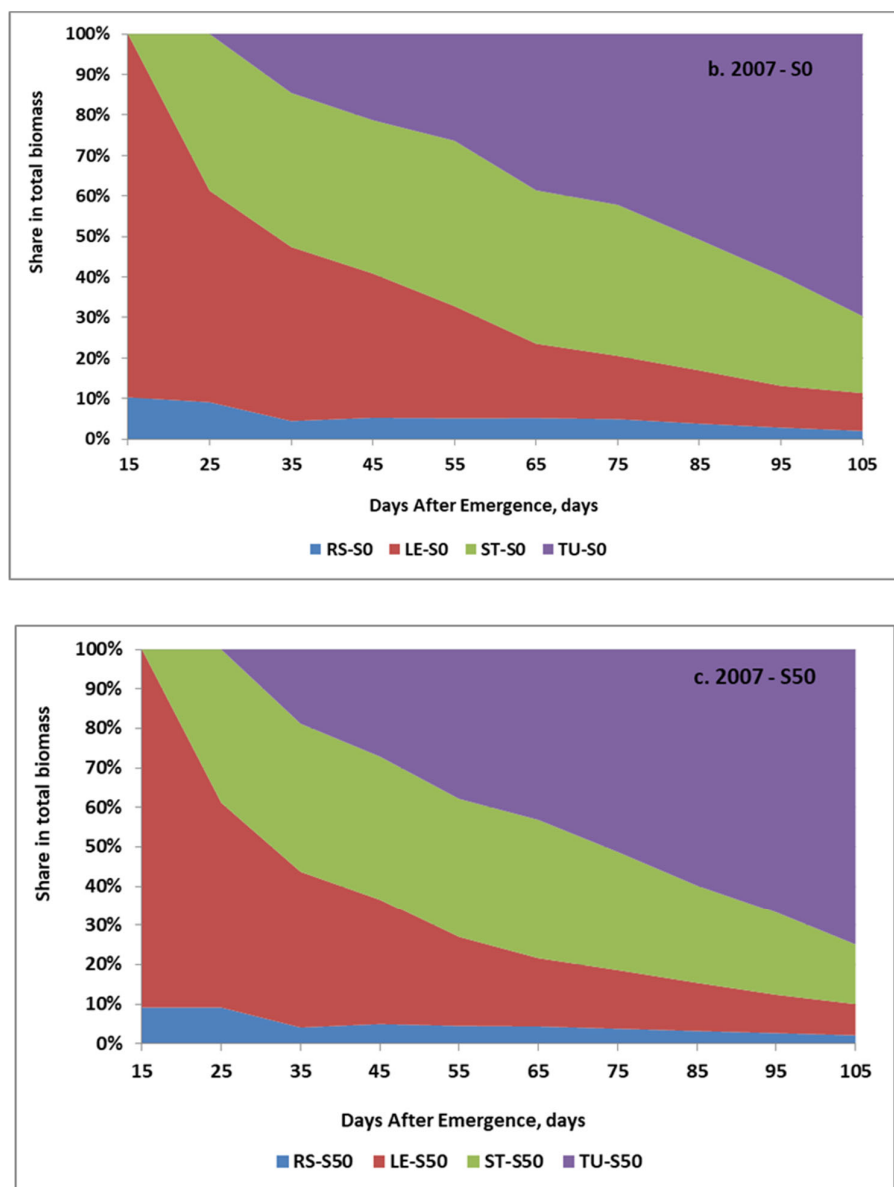


Figure S3. Seasonal variability in the relative share of potato organs in the total biomass. (a) 2006; (b) 2007-S0; (c) 2007-S50. Legend: RS—roots and stolons, LE—leaves, ST—stems, TU—tubers; S0, 50—sulfur rates of 0.50 kg ha⁻¹.