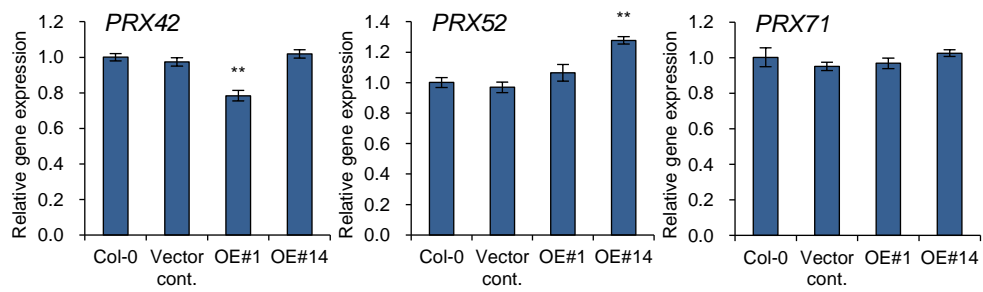


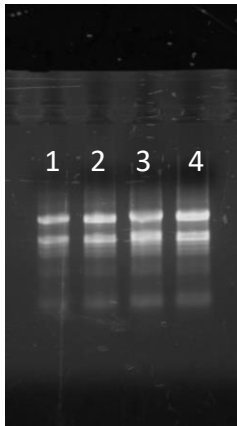
**Figure S1. Genes involved in cellulose biosynthesis and production (*COBRA*) were upregulated in the stem of *pPLAIIIγOE* lines.** Each data point represents the average  $\pm$  SE of three independent replicates at P < 0.05 (\*) and P < 0.01 (\*\*), respectively.



**Figure S2. Expression levels of peroxidases in the stem of *pPLAIIIyOE* lines.**

Each data point represents the average  $\pm$  SE of three independent replicates at  $P < 0.05$  (\*) and  $P < 0.01$  (\*\*), respectively.

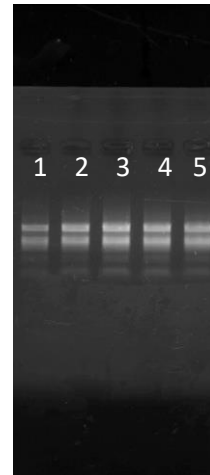
**Total RNA from 2-week-old seedling**  
(In figure 2A)



- 1: Col-0
- 2: Vector control (35S:YFP)
- 3: pPLAIIIyOE#5
- 4: pPLAIIIyOE#14

1% agarose gel, 100 V, 20 mins  
loading

**Total RNA from 7-week-old stem**  
(In figure.3B, 4A, 4B, 5B, S1, S2)



- 1: Col-0
- 2: Vector control (35S:YFP)
- 3: pPLAIIIyOE#1
- 4: pPLAIIIyOE#5
- 5: pPLAIIIyOE#14

1% agarose gel, 100 V, 20 mins  
loading

**Figure S3. Agarose gel loading of total RNA used for qPCR.** Total RNA isolated from 2- week-old seedling and 7-week-old stem was visualized in 1% of agarose gel