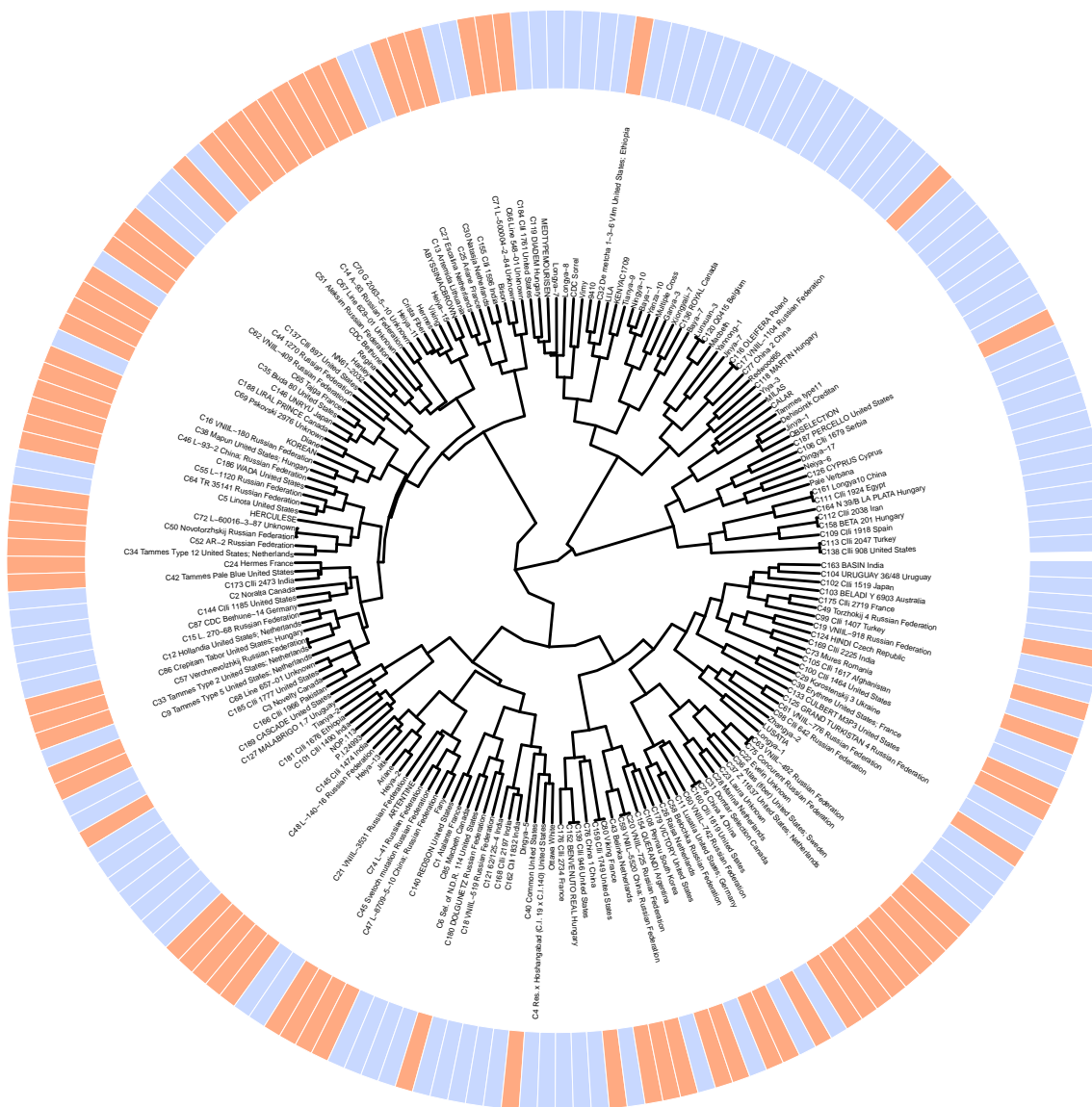
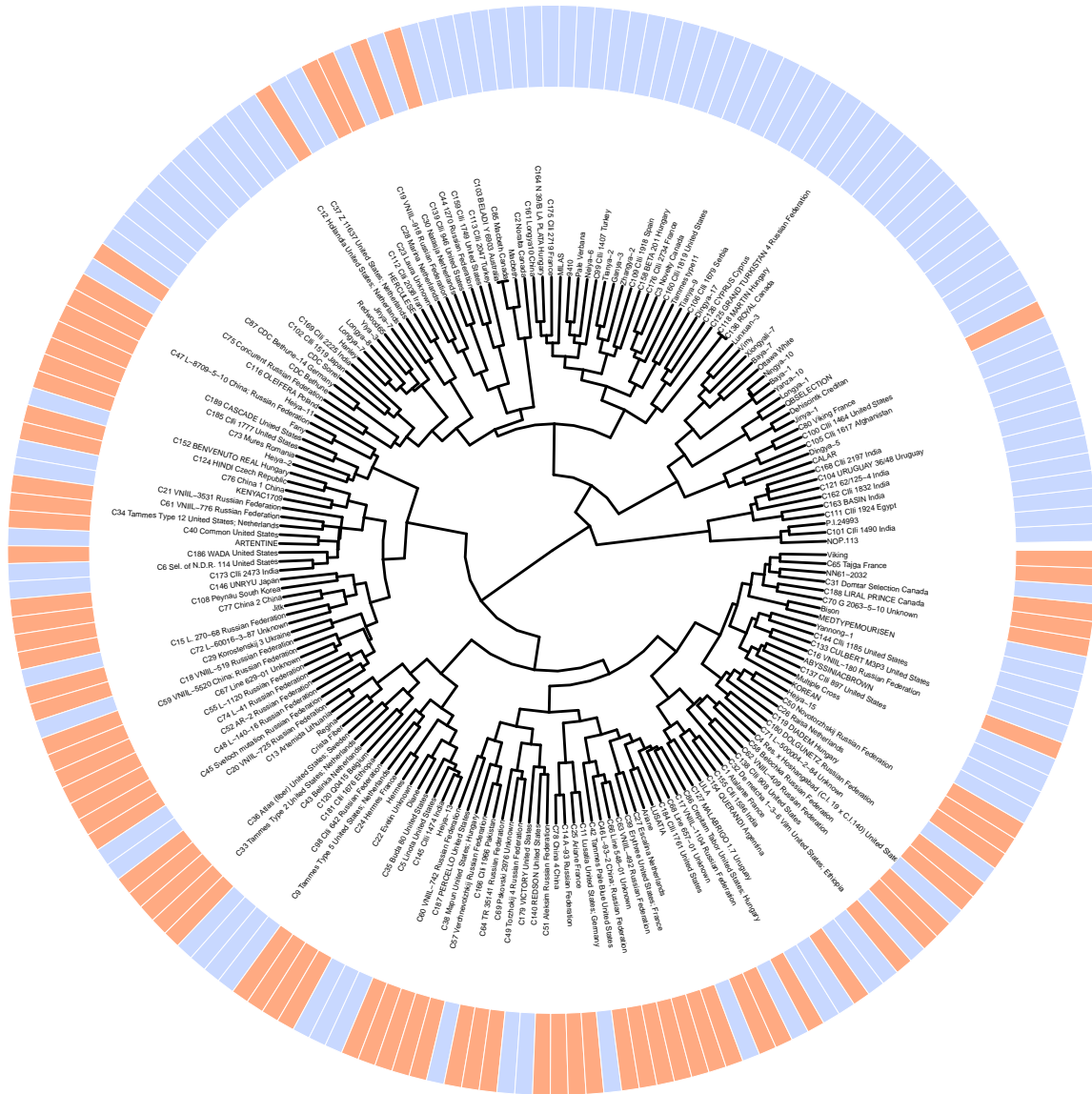




**Supplementary Figure S1b.** Dendrogram of linseed and fiber flax varieties based on polymorphisms of *CTL* genes.

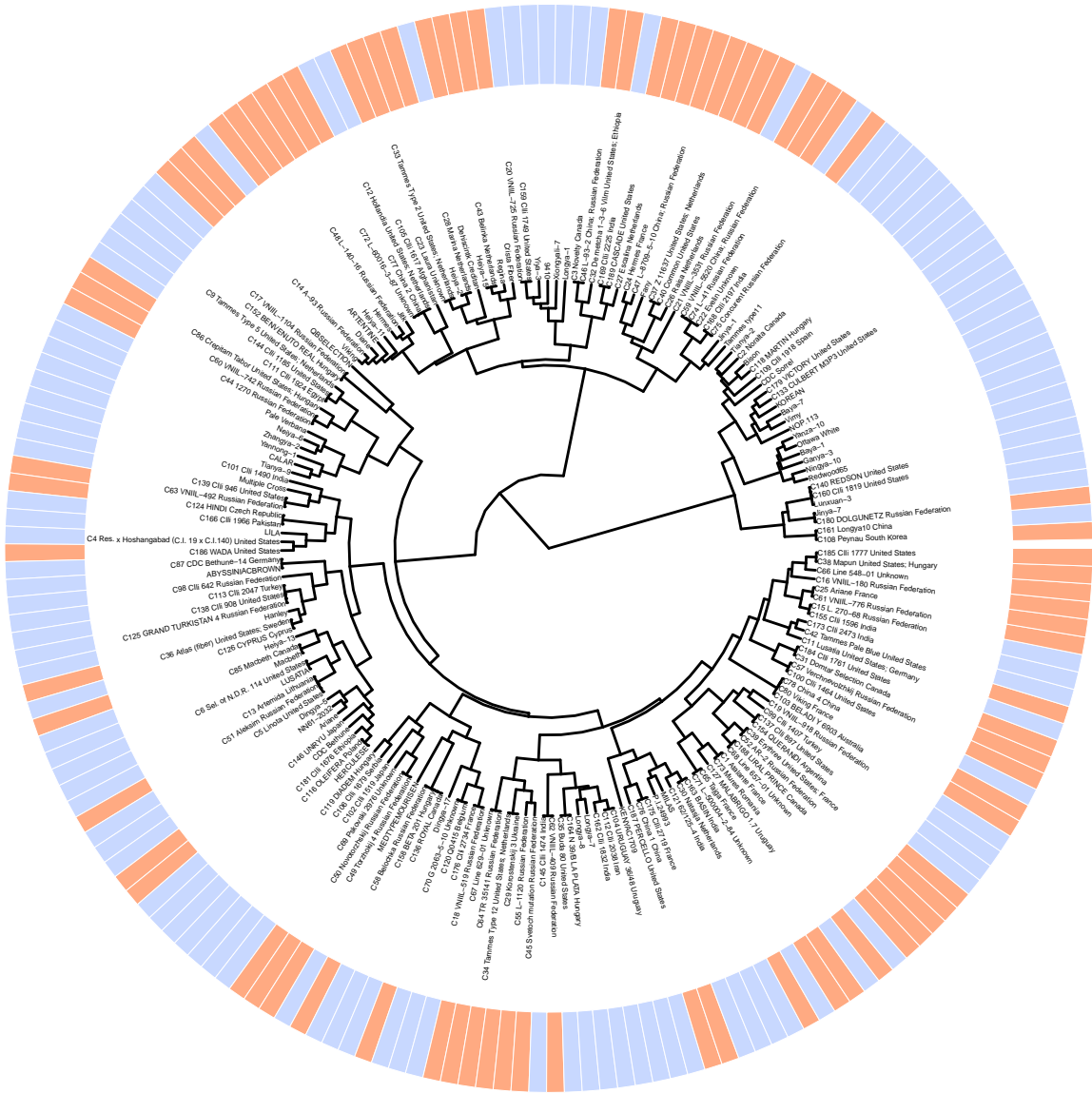


**Supplementary Figure S1c.** Dendrogram of linseed and fiber flax varieties based on polymorphisms of *BGAL* genes.

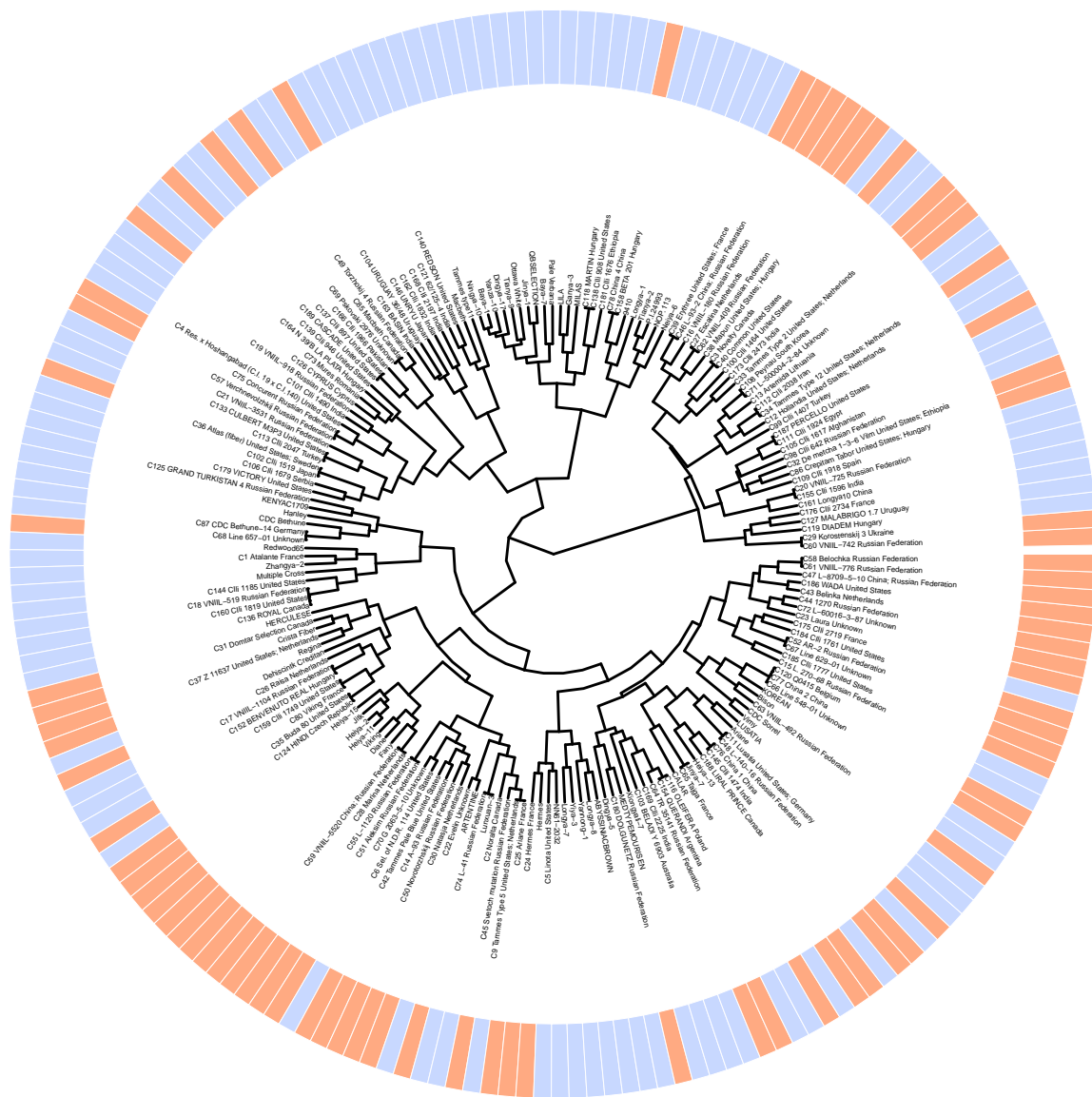




**Supplementary Figure S1e.** Dendrogram of linseed and fiber flax varieties based on polymorphisms of genes involved in lignan synthesis (*DIR*, *PLR*, and *UGT* families).

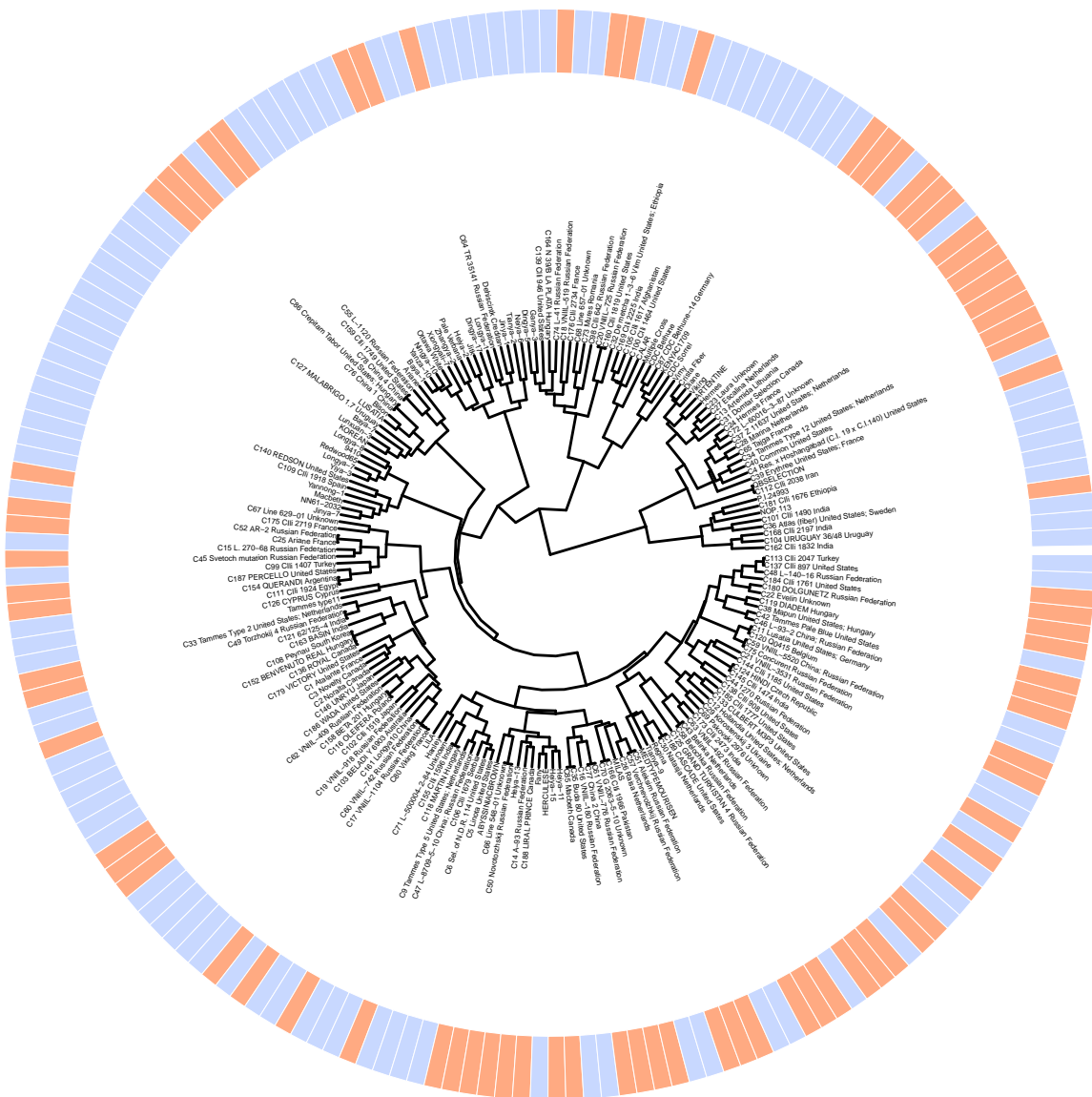


**Supplementary Figure S1f.** Dendrogram of linseed and fiber flax varieties based on polymorphisms of *TUB* genes.

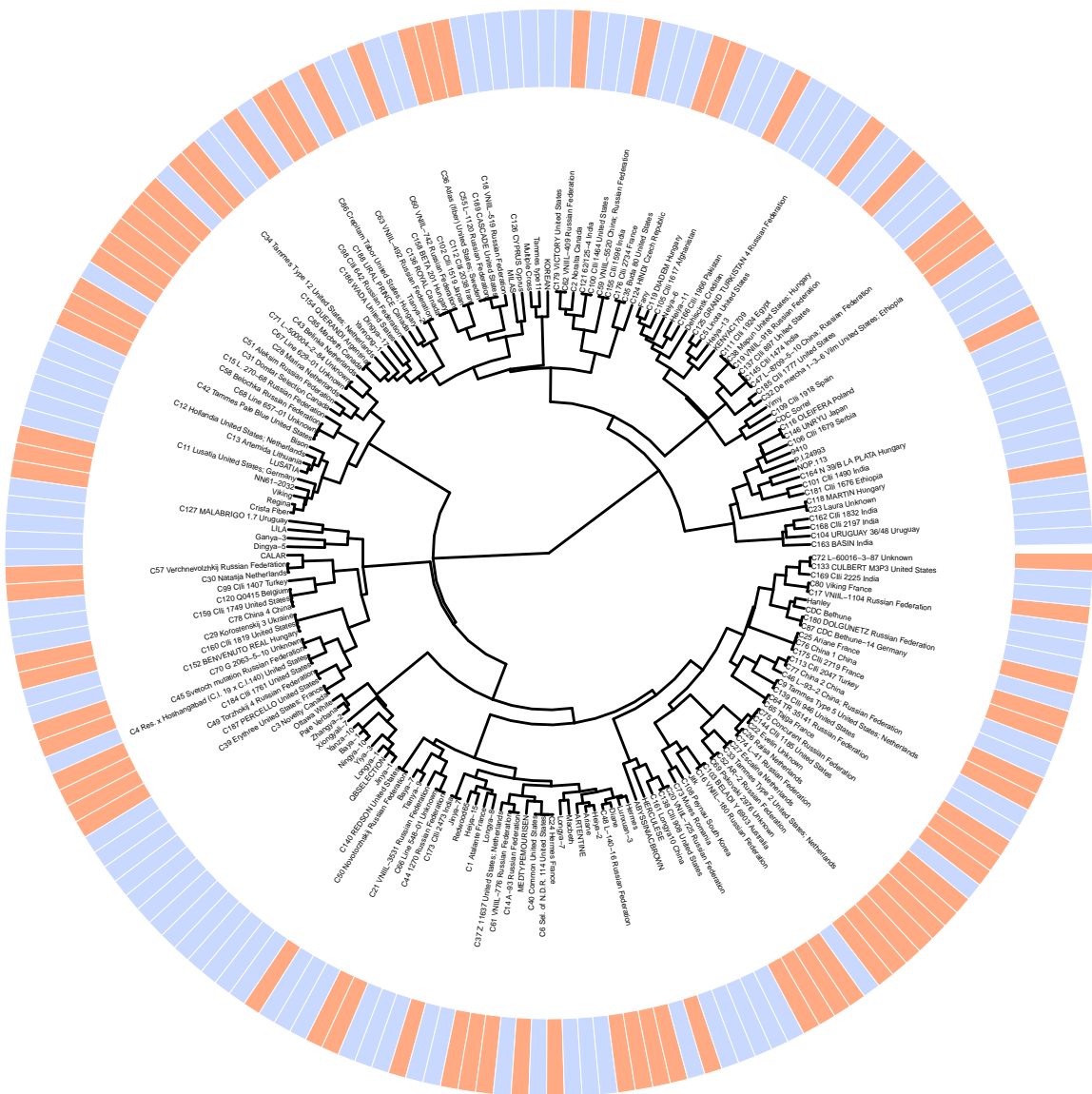




**Supplementary Figure S1g.** Dendrogram of linseed and fiber flax varieties based on polymorphisms of *CESA* genes.

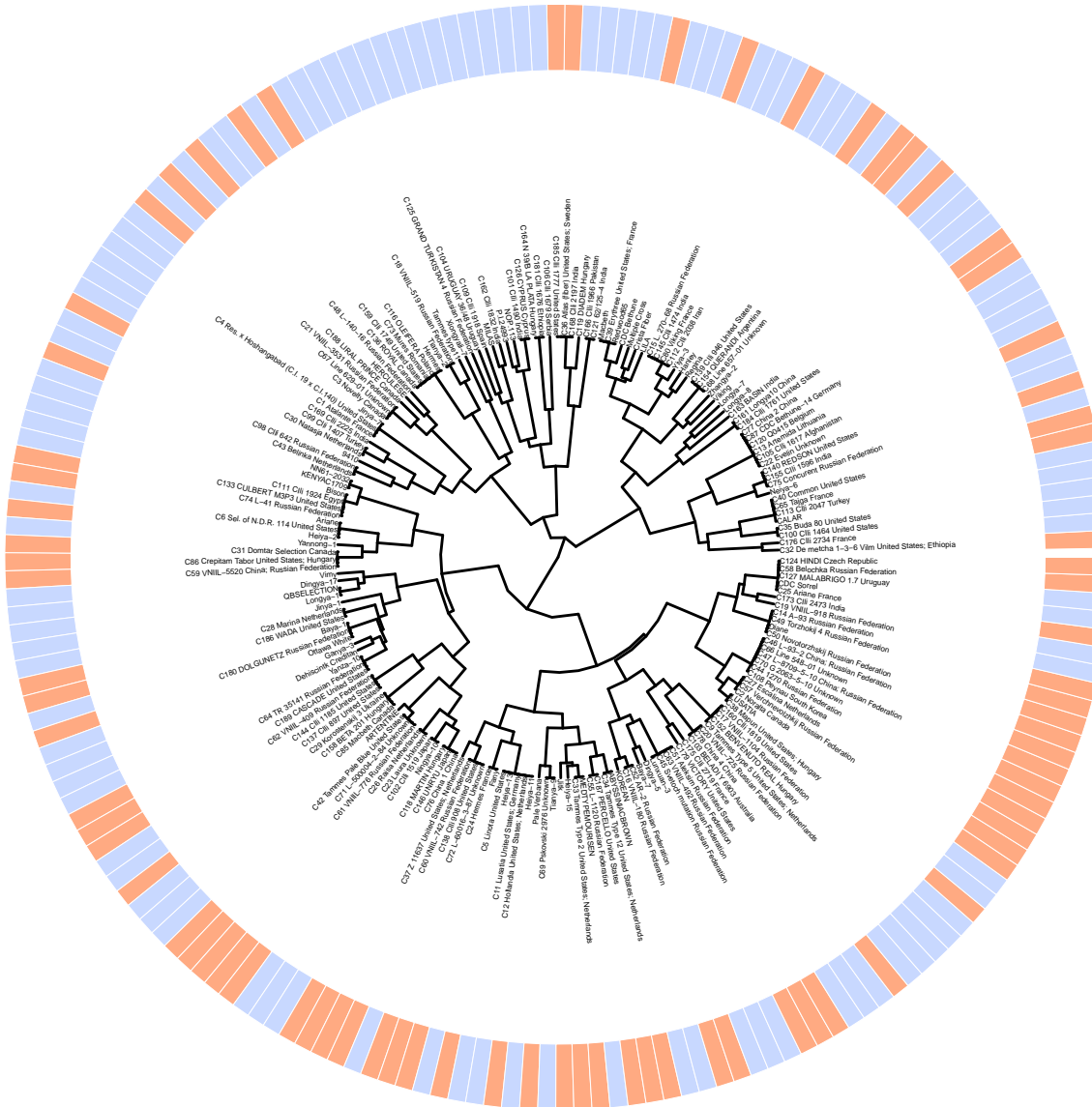


**Supplementary Figure S1h.** Dendrogram of linseed and fiber flax varieties based on polymorphisms of *RGL* genes.





**Supplementary Figure S1i.** Dendrogram of linseed and fiber flax varieties based on polymorphisms of genes involved in fatty acid synthesis (*FAD* and *SAD* families).



**Supplementary Figure S1j.** Dendrogram of linseed and fiber flax varieties based on polymorphisms of *ACT* genes.

